

APPROXIMATE ACRES

	GROSS	NET
UNIT 1 (MC)	123	106
UNIT 2 (MC)	106	68
TOTAL	229	174

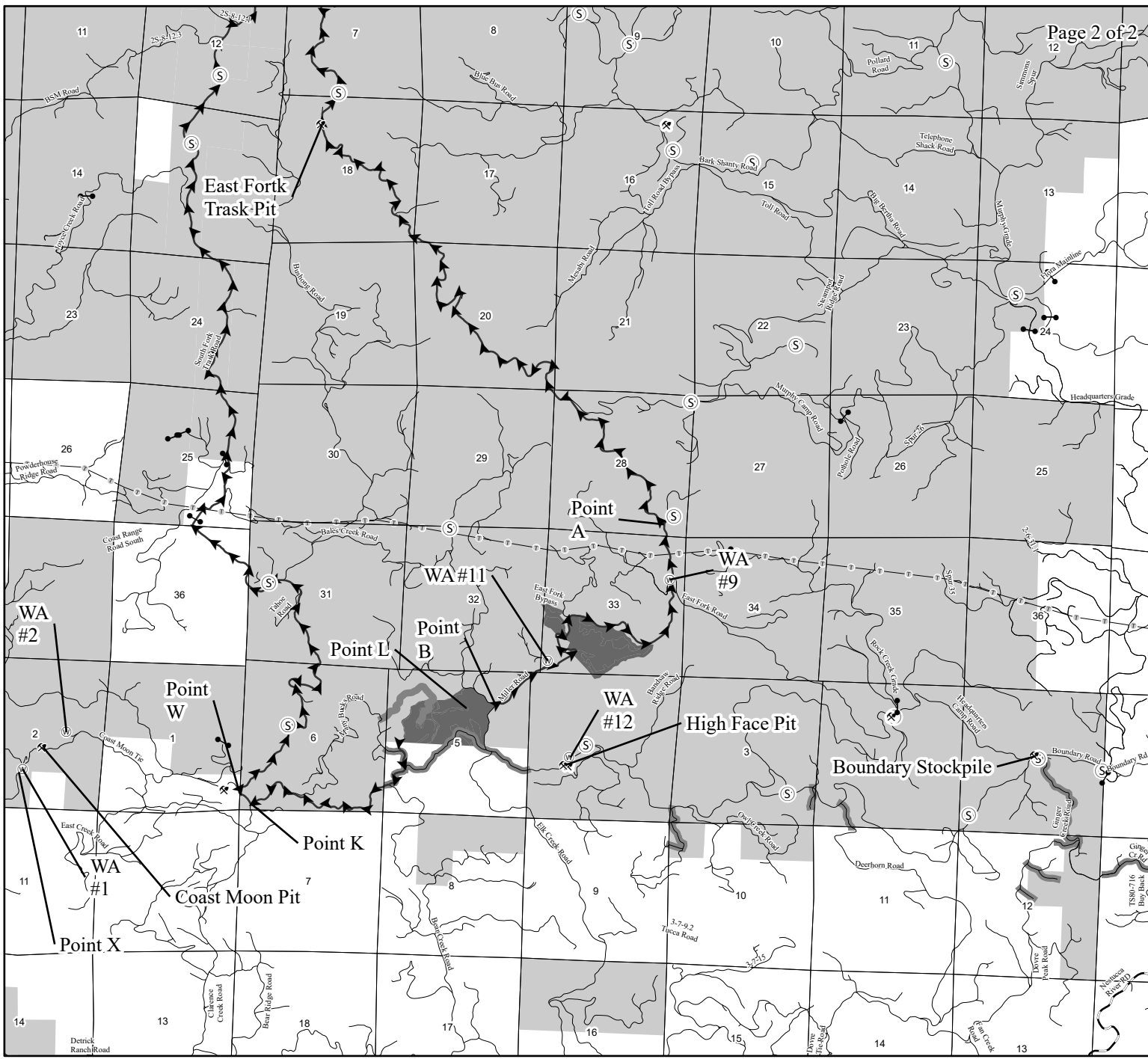
1 inch = 1,000 feet
 0 1,000 2,000 Feet

EXHIBIT A

FOR TIMBER SALE CONTRACT TL-341-2024-W00953-01
 BREAKING BOUNDARY
 PORTIONS OF SECTIONS 4, 5 OF T3S R7W,
 SECTIONS 32, 33 OF T2S R7W W.M.,
 TILLAMOOK COUNTY, OREGON

Tillamook District GIS
 JANUARY 2023
 This product is for informational use and may not be suitable for legal, engineering, or surveying purposes.

- Legend**
- ◆ Corners
 - ⊙ Waste Area
 - - - Project Road Construction
 - ⋯ Riparian Boundary
 - Riparian Buffer
 - ▭ Counties
 - ▭ Sections
 - ▭ Property Line
 - ⋯ Abandoned Road
 - ⋯ Blocked Road
 - ⋯ Type-F Stream
 - ⋯ Type-N Stream
 - ⋯ Timber Sale Boundary
 - ⋯ Surfaced Road
 - ⋯ Unsurfaced Road



Legend

- Ⓢ Stockpiles
- ⚡ Rock Source
- Ⓜ Waste Area
- Gates
- Sections
- Brushing
- Ⓜ Powerlines
- ➡ Haul Route Roads
- Highways
- Surfaced Roads
- Timber Sale Area
- ODF Ownership

EXHIBIT A

FOR TIMBER SALE CONTRACT TL-341-2024-W00953-01
 BREAKING BOUNDARY
 PORTIONS OF SECTIONS(s) 4, 5 of T3S R7W,
 SECTIONS(s) 32, 33 of T2S R7W W.M..
 TILLAMOOK COUNTY, OREGON

Tillamook District GIS
 JANUARY 2023

This product is for informational use and may not be
 suitable for legal, engineering, or surveying purposes.

1:63,360
 1 Inch = 1 mile

