

EXHIBIT A

- Legend**
- ◆ Corners
 - ⊗ Rock Source
 - ⊙ Waste Area
 - Gates
 - - - Project Road Construction
 - ⊞ Riparian Boundary
 - ⊞ Timber Sale Boundary
 - ⊞ Surfaced Road
 - ⊞ Unsurfaced Road
 - ⊞ Abandoned Road
 - ⊞ Blocked Road
 - ⊞ Type-F Stream
 - ⊞ Type-N Stream
 - ⊞ Riparian Buffer
 - ⊞ Sections
 - ⊞ Property Line
 - ⊞ Recreation Trail

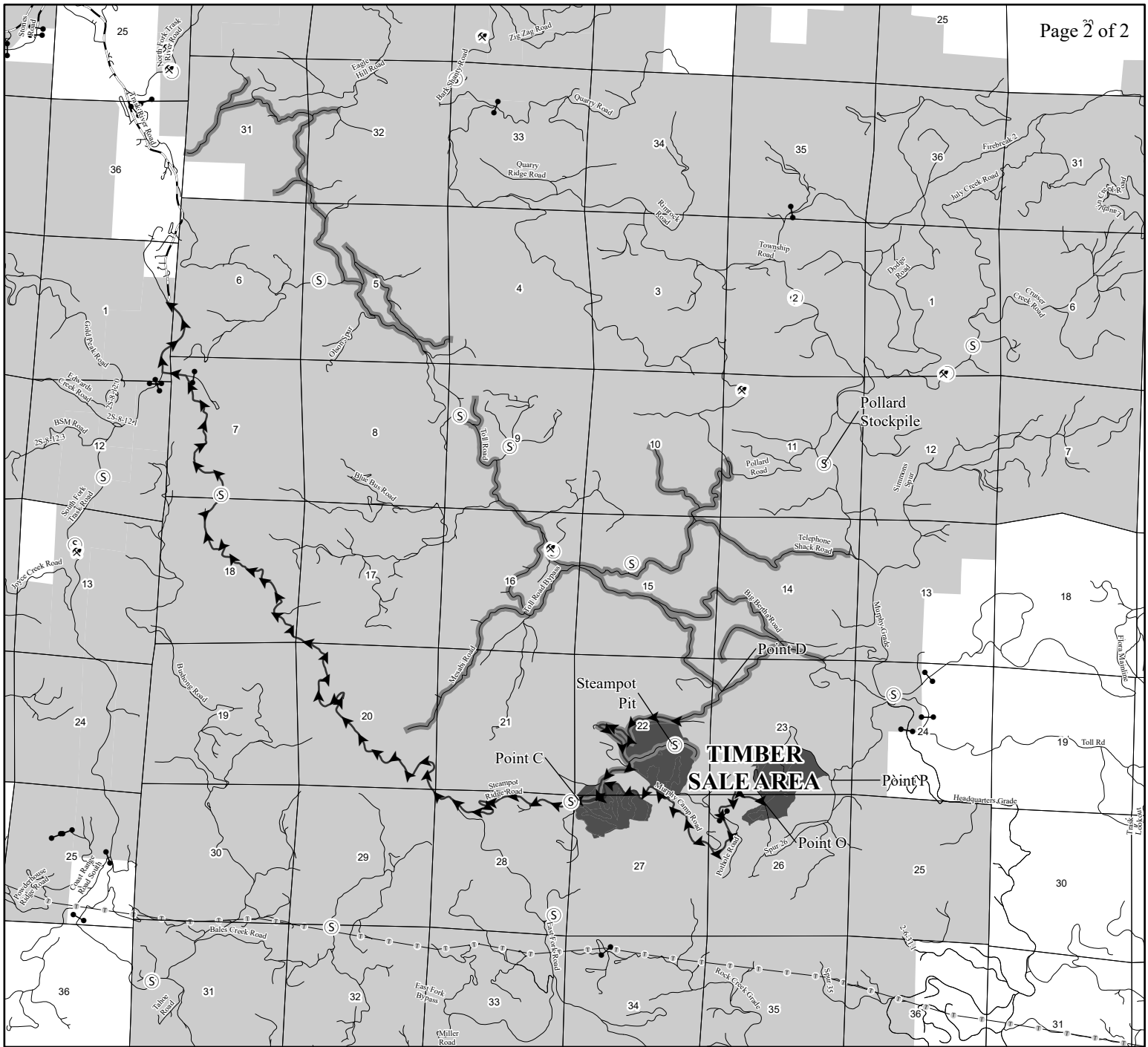


APPROXIMATE ACRES		
UNIT 1 (MC)	GROSS	NET
UNIT 2 (MC)	91	61
UNIT 3 (MC)	137	112
TOTAL	333	264

1:12,000
1 inch = 1,000 feet
0 1,000 2,000 Feet

FOR TIMBER SALE CONTRACT TL-341-2023-W00972-01
 POTHOLE MURPHY
 PORTIONS OF SECTIONS 22, 23, 26, 27, & 28, T2S, R7W, W.M.
 TILLAMOOK COUNTY, OREGON

Tillamook District GIS
 AUGUST 2022
 This product is for informational use and may not be suitable for legal, engineering, or surveying purposes.



Legend

- ⊙ Stockpiles
- Gates
- Sections
- Brushing
- Powerlines
- Haul Route Roads
- Highways
- Surfaced Roads
- Timber Sale Area
- ODF Ownership

EXHIBIT A

VICINITY MAP
 FOR TIMBER SALE CONTRACT TL-341-2023-W00972-01
 POTHOLE MURPHY
 PORTIONS OF SECTIONS 22, 23, 26, 27, & 28, T2S, R7W, W.M.
 TILLAMOOK COUNTY, OREGON

Tillamook District GIS
 AUGUST 2022

This product is for informational use and may not be
 suitable for legal, engineering, or surveying purposes.

1:63,360
 1 Inch = 1 mile

