

- Timber Sale Boundary
- Non-project construction
- - - - Project construction
- ▬ Surfaced Road
- - - - Unsurfaced Road
- vvvvvv Abandoned Road
- xxxxxx Blocked Road
- ▬ Type-F Stream
- ▬ Type-N Stream
- ⊥ Electric Transmission Lines
- ▭ Buffer
- ▲▲▲ Green Tree Area
- ▭ Sections
- Gates
- ⚡ Rock source
- Ⓜ Waste Area

### EXHIBIT A

FOR TIMBER SALE CONTRACT TL-341-2022-W00505-01  
 STEAMPOT  
 PORTIONS OF SECTIONS 24, 25, 26, 27, & 28, T2S, R7W, W.M.  
 TILLAMOOK COUNTY, OREGON

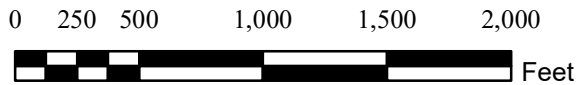
Tillamook District GIS  
 April, 2021

This product is for informational use and may not be suitable for legal, engineering, or surveying purposes.



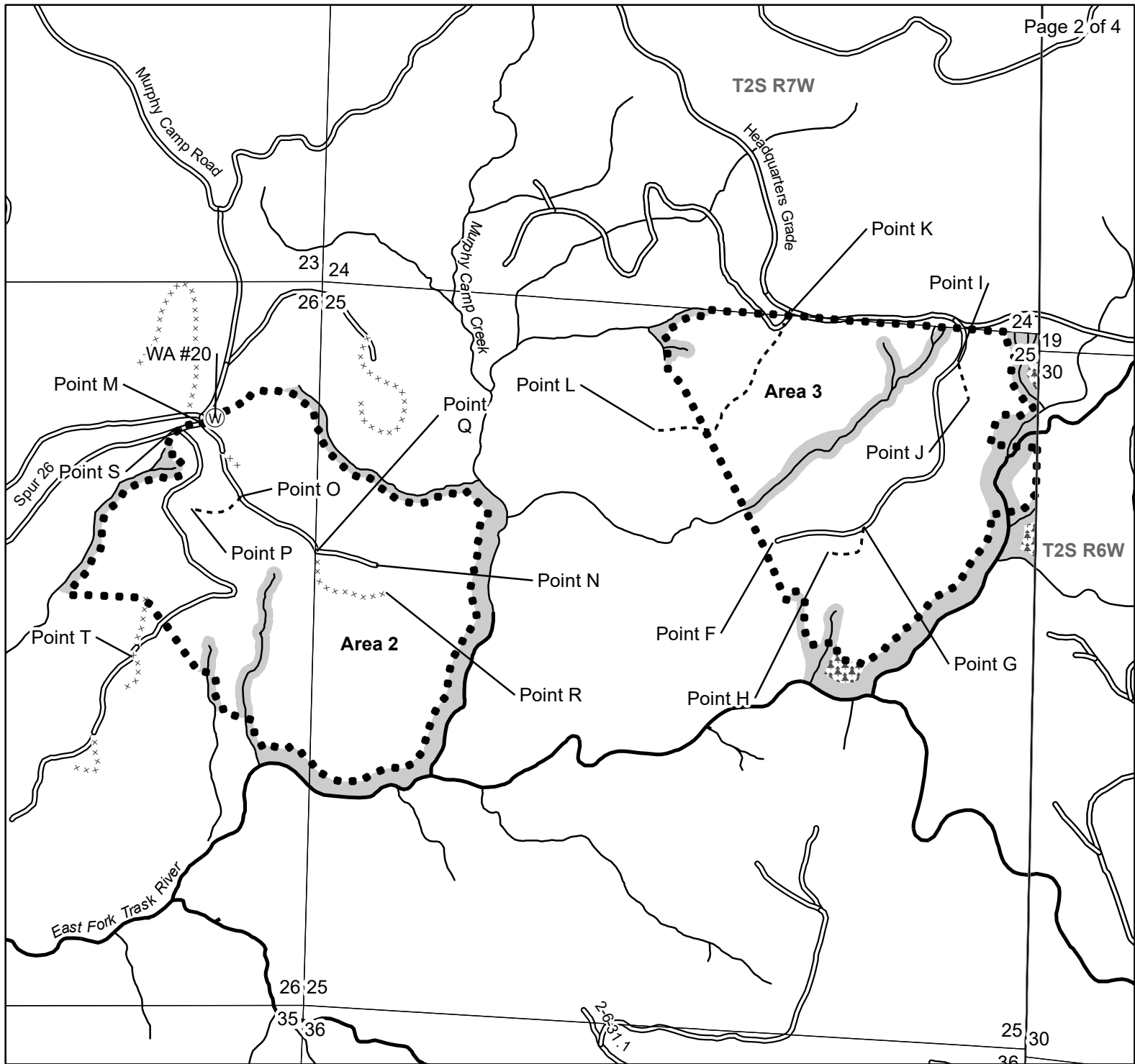
1:12,000

1 inch = 1,000 feet



#### APPROXIMATE ACRES

Unit #	Type of Operation	APPROXIMATE ACRES	
		Gross	Net
1	(Modified Clearcut)	139	109
2	(Modified Clearcut)	129	106
3	(Modified Clearcut)	118	89
Total		386	304



- Timber Sale Boundary
- Non-project construction
- - - - Project construction
- ▬ Surfaced Road
- - - - Unsurfaced Road
- vvvvvv Abandoned Road
- xxxxxx Blocked Road
- ▬ Type-F Stream
- ▬ Type-N Stream
- ⊕ Electric Transmission Lines
- ▭ Buffer
- ⊕ Green Tree Area
- ▭ Sections
- Gates
- ⚡ Rock source
- Ⓜ Waste Area

## EXHIBIT A

FOR TIMBER SALE CONTRACT TL-341-2022-W00505-01  
 STEAMPOT  
 PORTIONS OF SECTIONS 24, 25, 26, 27, & 28, T2S, R7W, W.M.  
 TILLAMOOK COUNTY, OREGON

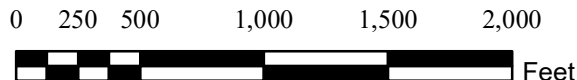
Tillamook District GIS  
 April, 2021

This product is for informational use and may not be  
 suitable for legal, engineering, or surveying purposes.



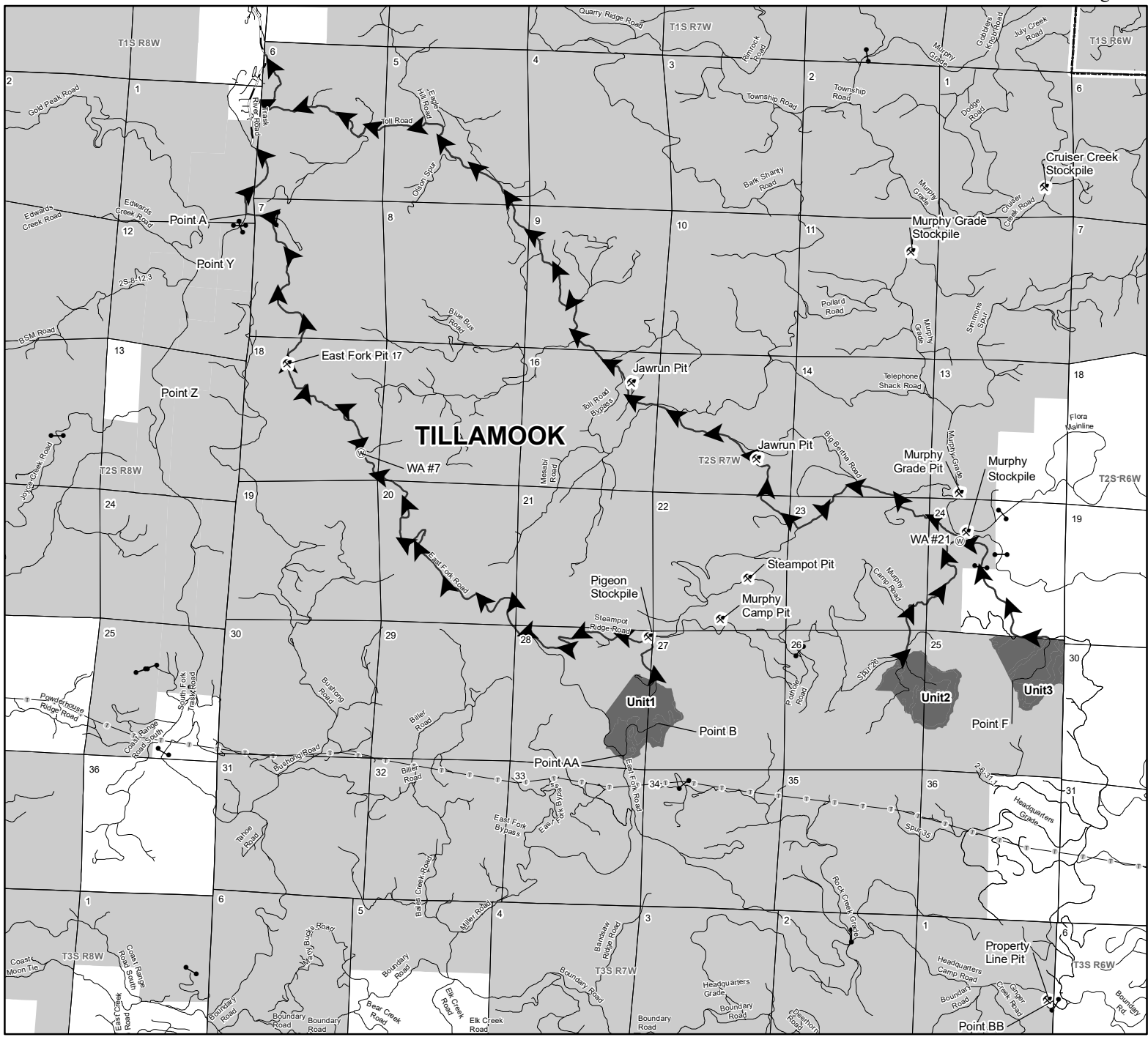
1:12,000

1 inch = 1,000 feet



### APPROXIMATE ACRES

Unit #	Type of Operation	Gross	Net
1	(Modified Clearcut)	139	109
2	(Modified Clearcut)	129	106
3	(Modified Clearcut)	118	89
Total		386	304



⚡ Rock source

Ⓜ Waste Area

Ⓢ Stockpiles

● Gates

➔ Haul Route Roads

Ⓣ Powerlines

— Highways

— Surfaced Roads

■ Timber Sale Area

⬡ Counties

■ ODF Ownership

### EXHIBIT A

VICINITY MAP  
 FOR TIMBER SALE CONTRACT TL-341-2022-W00505-01  
 STEAMPOT  
 PORTIONS OF SECTIONS 24, 25, 26, 27, & 28, T2S, R7W, W.M.  
 TILLAMOOK COUNTY, OREGON

Tillamook District GIS  
 April, 2021

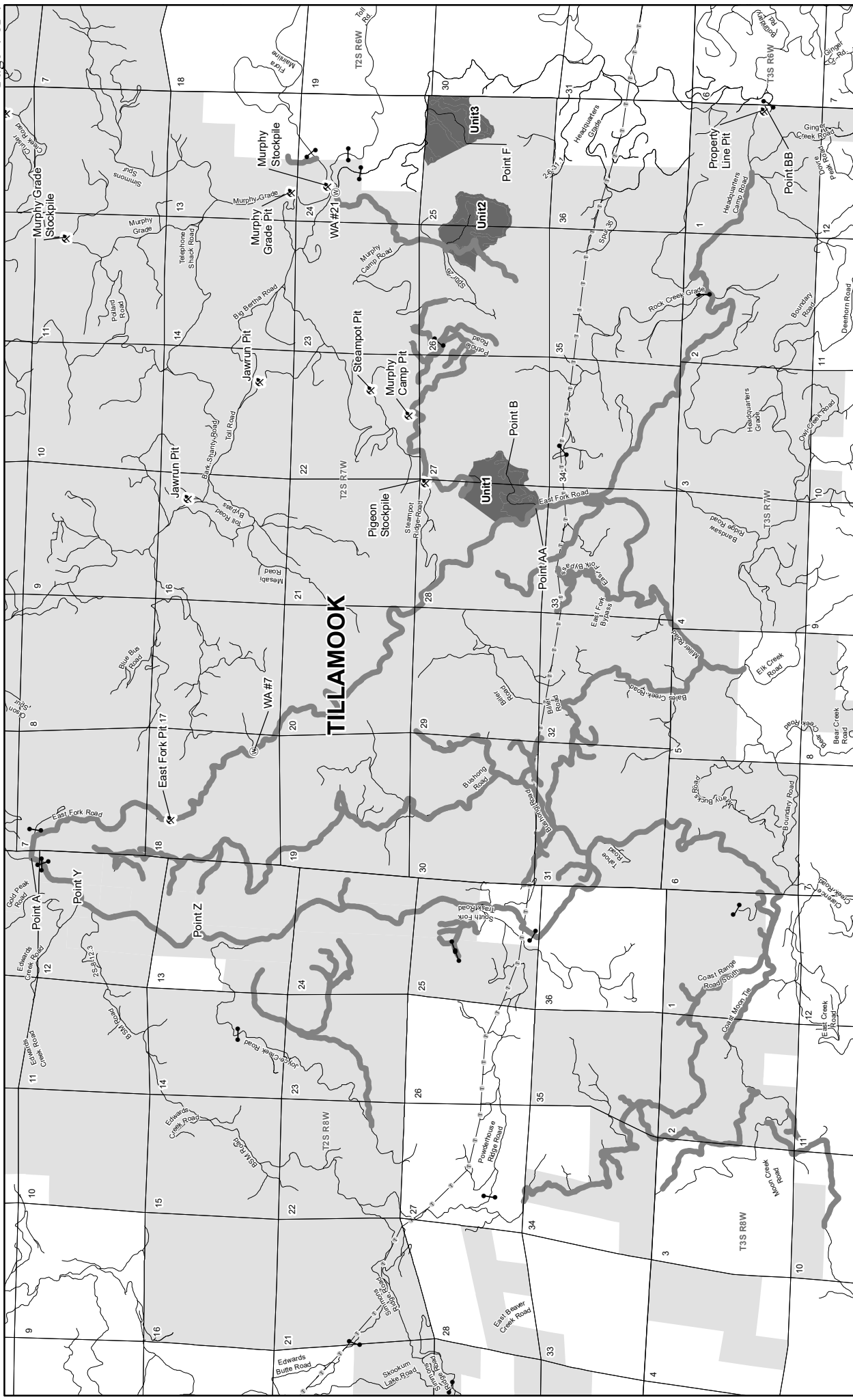
This product is for informational use and may not be  
 suitable for legal, engineering, or surveying purposes.



1:63,329

1 in = 1 miles





# EXHIBIT A - Road Brushing

VICINITY MAP  
 FOR TIMBER SALE CONTRACT TL-341-2022-W00505-01  
 STEAMPOT  
 PORTIONS OF SECTIONS 24, 25, 26, 27, & 28, T2S, R7W, W.M.  
 TILLAMOOK COUNTY, OREGON

Tillamook District GIS  
 April, 2021

This product is for informational use and may not be suitable for legal, engineering, or surveying purposes.

- Rock source
- Waste Area
- Gates
- Road Brushing
- Powerlines
- Highways
- Surfaced Roads
- Timber Sale Area
- Counties
- ODF Ownership

