

- Paved Roads
- Gravel Roads
- Natural Surface Roads
- Fish Bearing
- Perennial
- Seasonal
- Riparian Buffers
- Unit Boundary
- Project Points



Deep Ck

SWO-341-2024-GF7124-01

Exhibit "A"

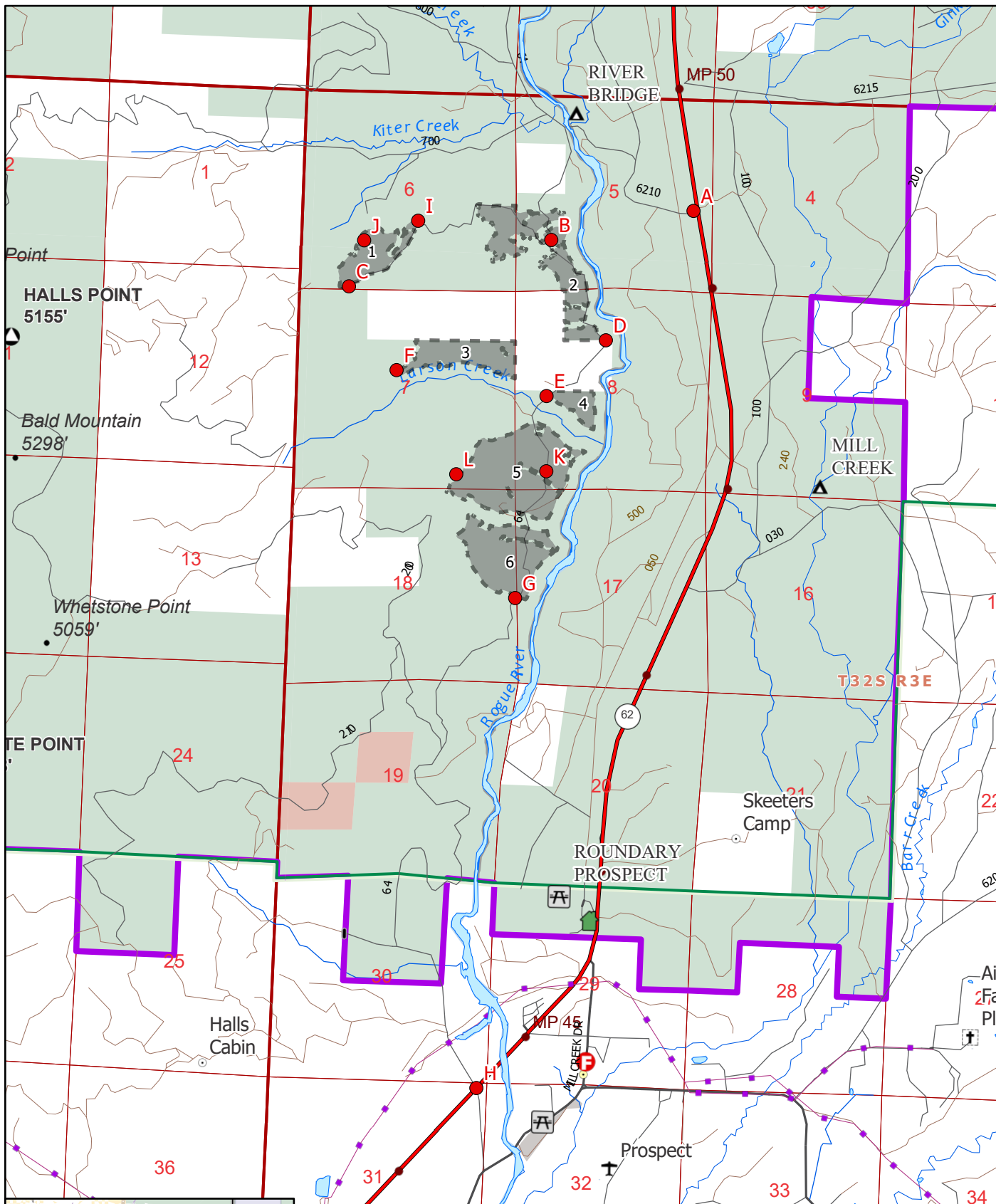
T32S R3E Sections 5, 6, 7, 8 ,17, 18

Jackson County, Oregon

Landowner: United States Forest Service

0 0.1 0.2 0.4 0.6
 Miles

Unit	Stand ID	Acres
1	1	36.4
2	546	76.7
3	643	45.1
4	635	16.1
5	548	125.1
6	636	76.6
		376.0



Deep Ck

SWO-341-2023-GF7124-01

Exhibit "A" Vicinity

T32S R3E Sections 5, 6, 7, 8 ,17, 18

Jackson County, Oregon

Landowner: United States Forest Service

0 0.28 0.55 1.1 1.65
Miles



The information shown on Exhibit "A" map(s) are approximate locations. Exact locations of features represented by map symbols will be determined on site and shall depend upon the conditions that exit on site. Activities shall be conducted based upon features

Unit Boundary
Project Points