

Legend

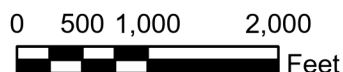
- Points
- Sale Boundary
- USFS Lands
- Ownership - Private Land
- == Paved Roads
- Gravel Roads
- Natural Surface Roads
- Temp Roads
- Mill Ck No Harvest Buffer
- Fish Streams
- Nonfish

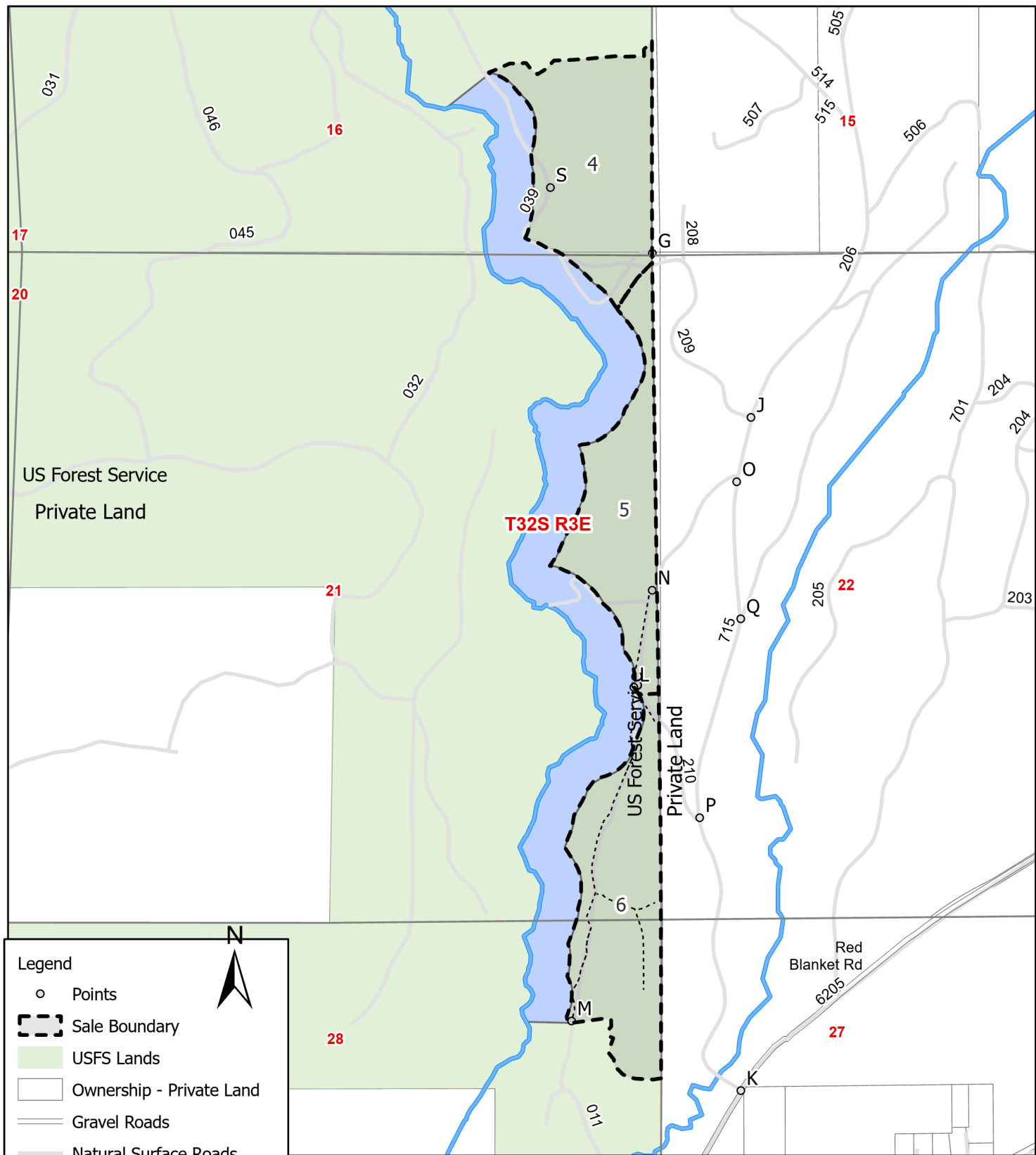
N

Slim GNA Timber Sale
SWO-341-2023-GF8118-07
Exhibit "A"
T32S R3E Sections 9, 16, 21, 28
Jackson County, Oregon
Landowner: United States Forest Service

Unit	Stand ID	Cruise Strata	Net Cruise Acres
1	607	North Units	24.8
2	607	North Units	42.8
3	601	North Units	46.6
4	595N	South Units	38.6
5	595M	South Units	28.7
6	595S	South Units	37.9
			219.4

The information shown on Exhibit "A" map(s) are approximate locations. Exact locations of features represented by map symbols will be determined on site and shall depend upon the conditions that exist on site. Activities shall be conducted based upon features determined on site rather than features shown on maps.





Legend

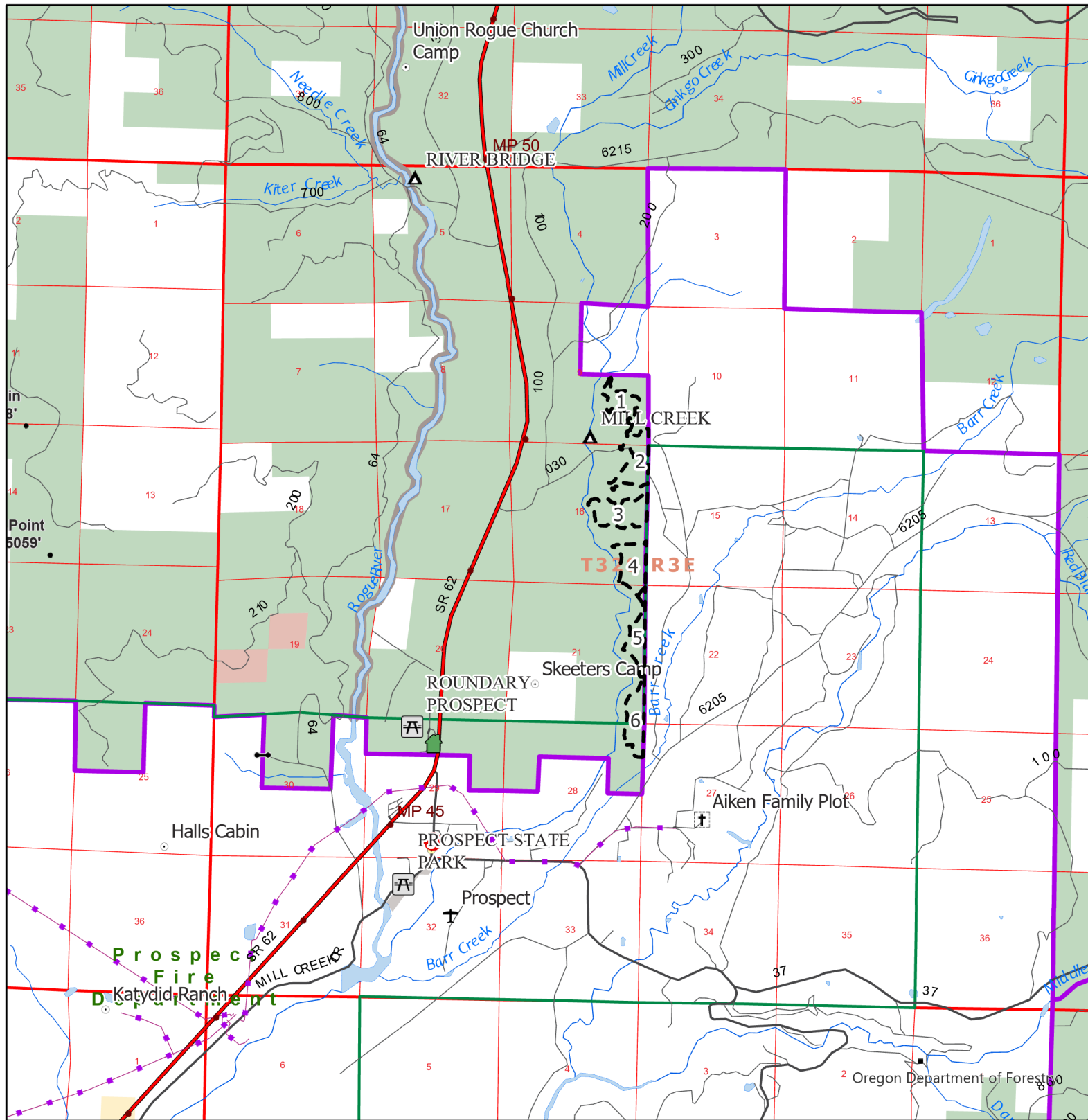
- Points
- ▬ Sale Boundary
- USFS Lands
- Ownership - Private Land
- Gravel Roads
- Natural Surface Roads
- ⋯ Temp Roads
- Fish Streams
- Mill Ck No Harvest Buffer

The information shown on Exhibit "A" map(s) are approximate locations. Exact locations of features represented by map symbols will be determined on site and shall depend upon the conditions that exist on site. Activities shall be conducted based upon features determined on site rather than features shown on maps.

Slim GNA Timber Sale
 SWO-341-2023-GF8118-07
 Exhibit "A"
 T32S R3E Sections 9, 16, 21, 28
 Jackson County, Oregon
 Landowner: United States Forest Service

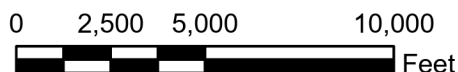


Unit	Stand ID	Cruise Strata	Net Cruise Acres
1	607	North Units	24.8
2	607	North Units	42.8
3	601	North Units	46.6
4	595N	South Units	38.6
5	595M	South Units	28.7
6	595S	South Units	37.9
			219.4



Slim GNA Timber Sale
 SWO-341-2023-GF8118-07
 Exhibit "A" Vicinity Map
 T32S R3E Sections 9, 16, 21, 28
 Jackson County, Oregon
 Landowner: United States Forest Service

Sale Boundary
 USFS Lands



The information shown on Exhibit "A" map(s) are approximate locations. Exact locations of features represented by map symbols will be determined on site and shall depend upon the conditions that exist on site. Activities shall be conducted based upon features determined on site rather than features shown on maps.