

EXHIBIT A

FOR TIMBER SALE CONTRACT # 341-2020-W00880-01
 #1 STOUT CREEK RESTORATION
 PORTIONS OF SECTIONS 2,3 & 4 T9S, R2E, SECTIONS 34, T8S R2E W.M.
 MARION COUNTY, OREGON

North Cascade District GIS

November, 2020

This product is for informational use and may not be
 suitable for legal, engineering, or surveying purposes.

1:20,000

1 inch = 1,667 feet

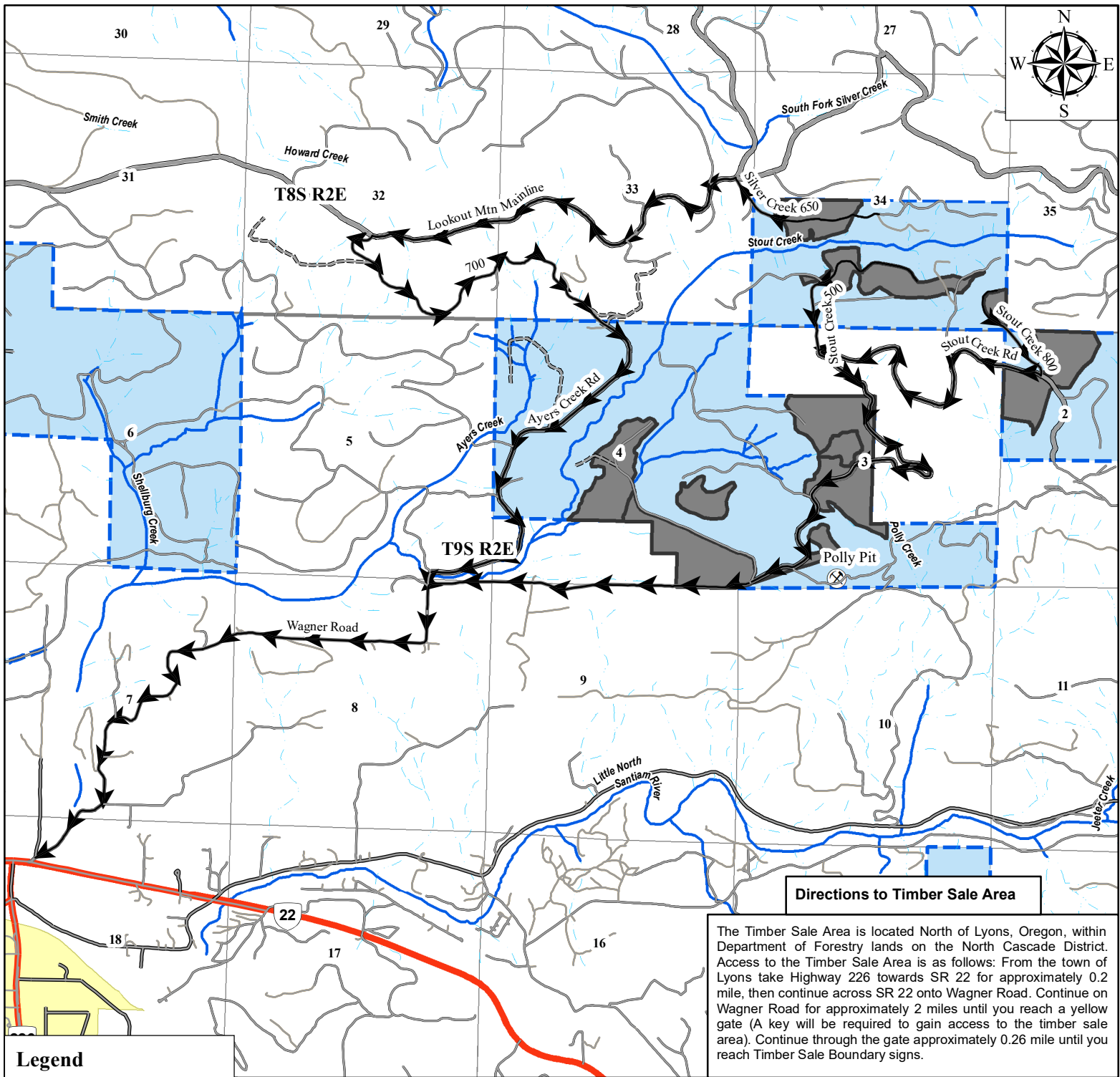
0 1,300 2,600
 Feet

APPROXIMATE NET ACRES

UNIT 1	30	ACRES (MC)
UNIT 2	16	ACRES (MC)
UNIT 3	41	ACRES (MC)
UNIT 4	9	ACRES (MC)
UNIT 5	45	ACRES (MC)
UNIT 6	23	ACRES (MC)
UNIT 7	21	ACRES (MC)
UNIT 8	25	ACRES (MC)
UNIT 9	6	ACRES (MC)
UNIT 10	44	ACRES (MC)
UNIT 11	16	ACRES (MC)

TOTAL 275 ACRES

Map Projection:
 Oregon Statewide Lambert
 International Feet, NAD 1983



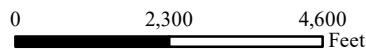
VICINITY MAP
 FOR TIMBER SALE CONTRACT # 341-2020-W00880-01
 #1 STOUT CREEK RESTORATION
 PORTIONS OF SECTIONS 2,3 & 4 T9S, R2E, SECTIONS 34, T8S R2E W.M.
 MARION COUNTY, OREGON

North Cascade District GIS
 November, 2020

This product is for informational use and may not be
 suitable for legal, engineering, or surveying purposes.

1:34,500

1 inch = 2,875 feet



APPROXIMATE NET ACRES

UNIT 1	30	ACRES (MC)
UNIT 2	16	ACRES (MC)
UNIT 3	41	ACRES (MC)
UNIT 4	9	ACRES (MC)
UNIT 5	45	ACRES (MC)
UNIT 6	23	ACRES (MC)
UNIT 7	21	ACRES (MC)
UNIT 8	25	ACRES (MC)
UNIT 9	6	ACRES (MC)
UNIT 10	44	ACRES (MC)
UNIT 11	16	ACRES (MC)

TOTAL 275 ACRES

Map Projection:
 Oregon Statewide Lambert
 International Feet, NAD 1983

Legend

- Rockpits
- Timber Sale Area
- Santiam State Forest
- City Limits
- Designated Haul Route
- Road**
- Highway
- City Road
- Mainline Road
- All Weather
- Dirt Road
- Old Road Bed - Not Drivable
- Streams**
- Fish
- Nonfish