

# Dead Cow Timber Sale

## Appraisal (Chip)

KL-341-2025-W01142-01

Location      Gilchrist State Forest

Portions of sections 35 and 36 of T23S R9E and Sections 1, 2, 11, and 12 of T24S R9E  
Willamette Meridian, Klamath County, Oregon



## Volume Harvestable

Total Acres		1021	Ac	
Exclusion	0%	0	Ac	(bypass)
Total Harvest Area		1021	Ac	
Optional Entry Area	0%	0	Ac	6 green tons / acre harvestable
General Harvest Area		1021	Ac	8 green tons / acre harvestable

## Value

8,168.00 total green tons

\$0.30 min bid price / green ton

**\$2,450.40** Approximate Value

The Volume harvestable refers to all material to be felled. PURCHASER may sort the felled product into Sawlog and Chip material. The price shall be the same for all material harvested. Refer to Exhibit C for details (Sawmill and Pulp). Refer to section 1740 in the contract for log prices.

STATE makes no guarantee as to the accuracy or amount harvestable for the terms of this contract.

## Variables

### Harvest Yields

1021 Acres harvestable  
0% % optional entry area  
1021 GHA acres (general harvest area)  
8 GHA green tons / acre  
8168.0 GHA total green tons  
0.0 OEA acres (optional entry area)  
6 OEA green tons / acre  
0.0 OEA total green tons  
8168.0 total green tons  
248 total loads  
0.24 Loads per acre

### Assumptions

33.0	green tons / load
35.2%	moisture
21.4	bdt / load

## Costs

### Trucking Costs

\$750.00	haul cost / load
\$22.73	haul cost / green ton

### Processing Costs

\$250.00	Chipper / hour
\$100.00	Skid / hour
1.18	hours / load
\$413.00	cost / load
\$12.52	cost / green Ton

### Total Costs per Green Ton

\$37.50	Cutting
\$12.52	Processing
\$22.73	Trucking
\$1.01	Obligations
\$73.75	Total

### Profit / Risk per Green Ton

16%	Profit / Risk
\$11.80	Profit & Risk / green ton

### Cutting Costs

\$150.00	Buncher Cost per hour
8168.00	Total Green Tons
8.00	Green Tons / acre
0.24	Loads / acre
5.00	acre cut / day (assume 10 hr day)
\$300.00	cost / acre
\$1,237.50	cost / load
\$37.50	Cost / green ton

### Project Work (non-credit)

\$5,000.00	*Road Maintenance (sections 2130 and 2360)
\$2,250.00	*Pile Construction (sections 2550 and 2560)
\$1,000.00	*Road closures (section 2360)
\$8,250.00	total
\$1.01	cost / green ton

\*Project Work (non-credit) costs are approximate. The actual cost will depend on operation conditions AND operative damages as determined by STATE.

## Payment

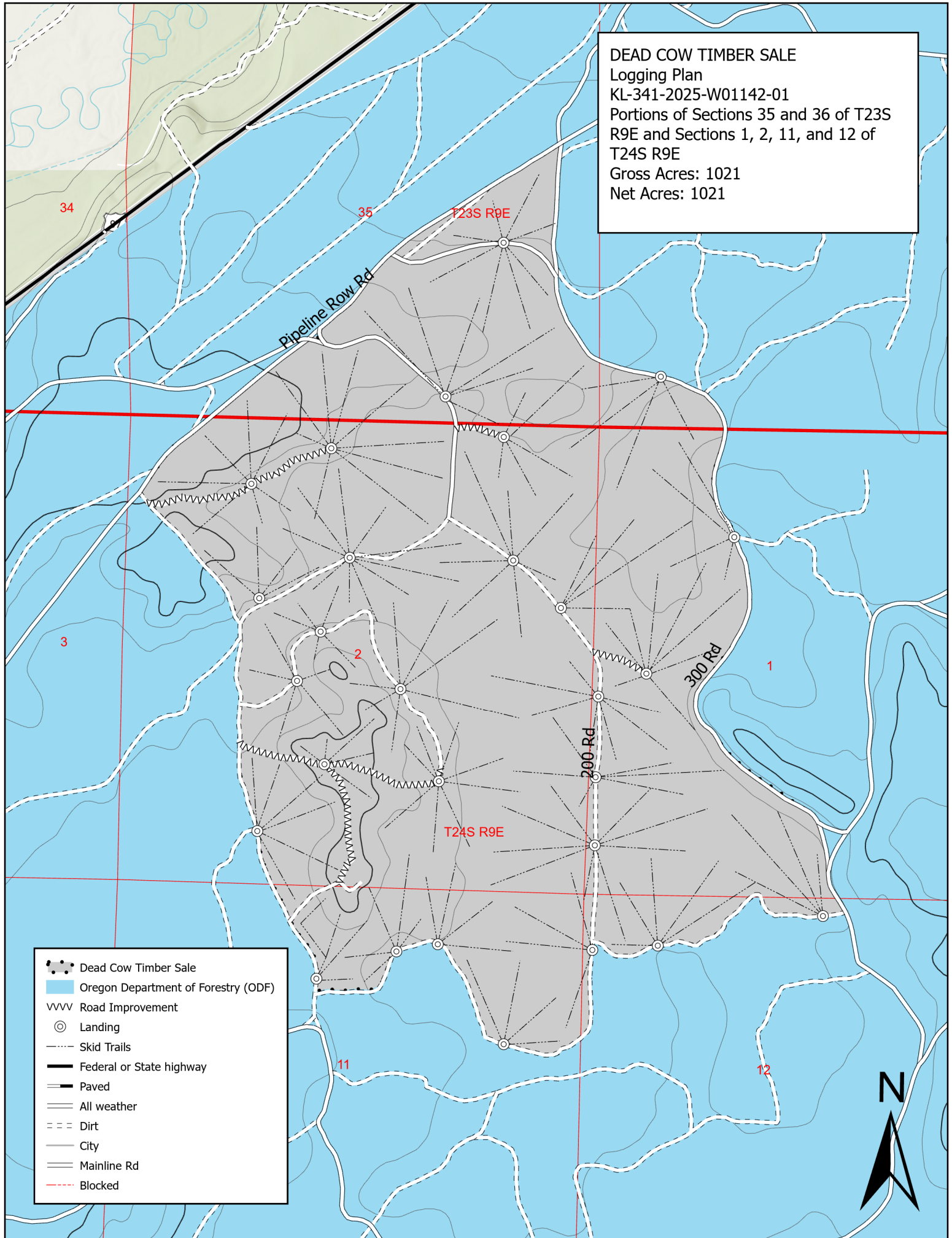
### Payment

\$132.49	payment per / ton
35.2%	moisture
\$85.85	payment / green ton
\$2,833.17	payment / load

### Pricing

\$85.85	payment / green ton
\$73.75	costs / green ton
\$11.80	Profit & Risk / green ton
\$0.30	per ton minimum bid

DEAD COW TIMBER SALE  
Logging Plan  
KL-341-2025-W01142-01  
Portions of Sections 35 and 36 of T23S  
R9E and Sections 1, 2, 11, and 12 of  
T24S R9E  
Gross Acres: 1021  
Net Acres: 1021



- Dead Cow Timber Sale
- Oregon Department of Forestry (ODF)
- Road Improvement
- Landing
- Skid Trails
- Federal or State highway
- Paved
- All weather
- Dirt
- City
- Mainline Rd
- Blocked