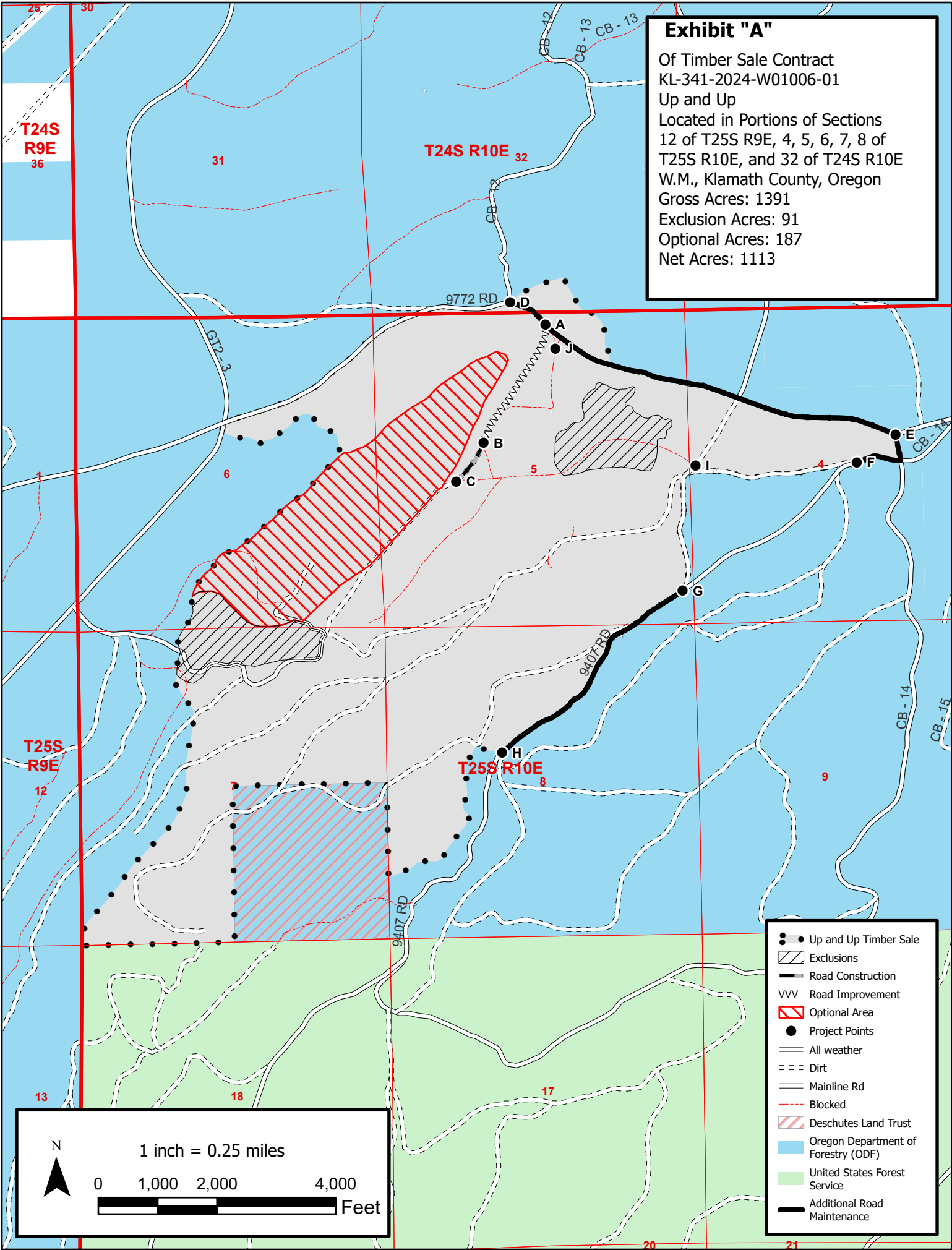


**Exhibit "A"**  
 Of Timber Sale Contract  
 KL-341-2024-W01006-01  
 Up and Up  
 Located in Portions of Sections  
 12 of T25S R9E, 4, 5, 6, 7, 8 of  
 T25S R10E, and 32 of T24S R10E  
 W.M., Klamath County, Oregon  
 Gross Acres: 1391  
 Exclusion Acres: 91  
 Optional Acres: 187  
 Net Acres: 1113



- ● Up and Up Timber Sale
- ▨ Exclusions
- Road Construction
- W W Road Improvement
- ▨ Optional Area
- Project Points
- All weather
- - - Dirt
- Mainline Rd
- - - Blocked
- ▨ Deschutes Land Trust
- Oregon Department of Forestry (ODF)
- United States Forest Service
- Additional Road Maintenance

N

1 inch = 0.25 miles

0 1,000 2,000 4,000 Feet

A north arrow points upwards. Below it is a scale bar with markings at 0, 1,000, 2,000, and 4,000 feet.

