

Up and Up Timber Sale

Appraisal (Chip)

KL-341-2024-W01006-01

Location Gilchrist State Forest

Portions of sections 12 of T25S R9E
 Portions of sections 4, 5, 6, 7, 8 of T25S R10E
 Portions of sections 32 of T24S R10E
 Willamette Meridian, Klamath County, Oregon



Volume Harvestable

Total Acres		1391	Ac	
Exclusion	7%	91	Ac	(bypass)
Total Harvest Area		1300	Ac	
Optional Entry Area	13%	187	Ac	6 green tons / acre harvestable
General Harvest Area		1113	Ac	8 green tons / acre harvestable

Value

10,026.00 total green tons
 \$1.36 min bid price / green ton

\$13,635.36 Approximate Value

The Volume harvestable refers to all material to be felled. PURCHASER may sort the felled product into Sawlog and Chip material. The price shall be the same for all material harvested. Refer to Exhibit C for details (Sawmill and Pulp). Refer to section 1740 in the contract for log prices.

STATE makes no guarantee as to the accuracy or amount harvestable for the terms of this contract.

Variables

Harvest Yields

1300 Acres harvestable
 13% % optional entry area
 1113 GHA acres (general harvest area)
 8 GHA green tons / acre
 8904.0 GHA total green tons
 187.0 OEA acres (optional entry area)
 6 OEA green tons / acre
 1122.0 OEA total green tons
 10026.0 total green tons
 304 total loads
 0.23 Loads per acre

Assumptions

33.0 green tons / load
 34.0% moisture
 21.8 bdt / load

Costs

Trucking Costs

\$750.00 haul cost / load
 \$22.73 haul cost / green ton

Processing Costs

\$250.00 Chipper / hour
 \$100.00 Skid / hour
 1.17 hours / load
 \$409.50 cost / load
 \$12.41 cost / green Ton

Total Costs per Green Ton

\$38.90 Cutting
 \$12.41 Processing
 \$22.73 Trucking
 \$0.82 Obligations
 \$74.86 Total

Profit / Risk per Green Ton

15% Profit / Risk
 \$11.23 Profit & Risk / green ton

Cutting Costs

\$150.00 Buncher Cost per hour
 10026.00 Total Green Tons
 7.71 Green Tons / acre
 0.23 Loads / acre
 5.00 acre cut / day (assume 10 hr day)
 \$300.00 cost / acre
 \$1,283.66 cost / load
 \$38.90 Cost / green ton

Project Work (non-credit)

\$5,000.00 *Road Maintenance (sections 2130 and 2360)
 \$2,250.00 *Pile Construction (sections 2550 and 2560)
 \$1,000.00 *Road closures (section 2360)
 \$8,250.00 total
 \$0.82 cost / green ton

*Project Work (non-credit) costs are approximate. The actual cost will depend on operation conditions AND operative damages as determined by STATE.

Payment

Payment

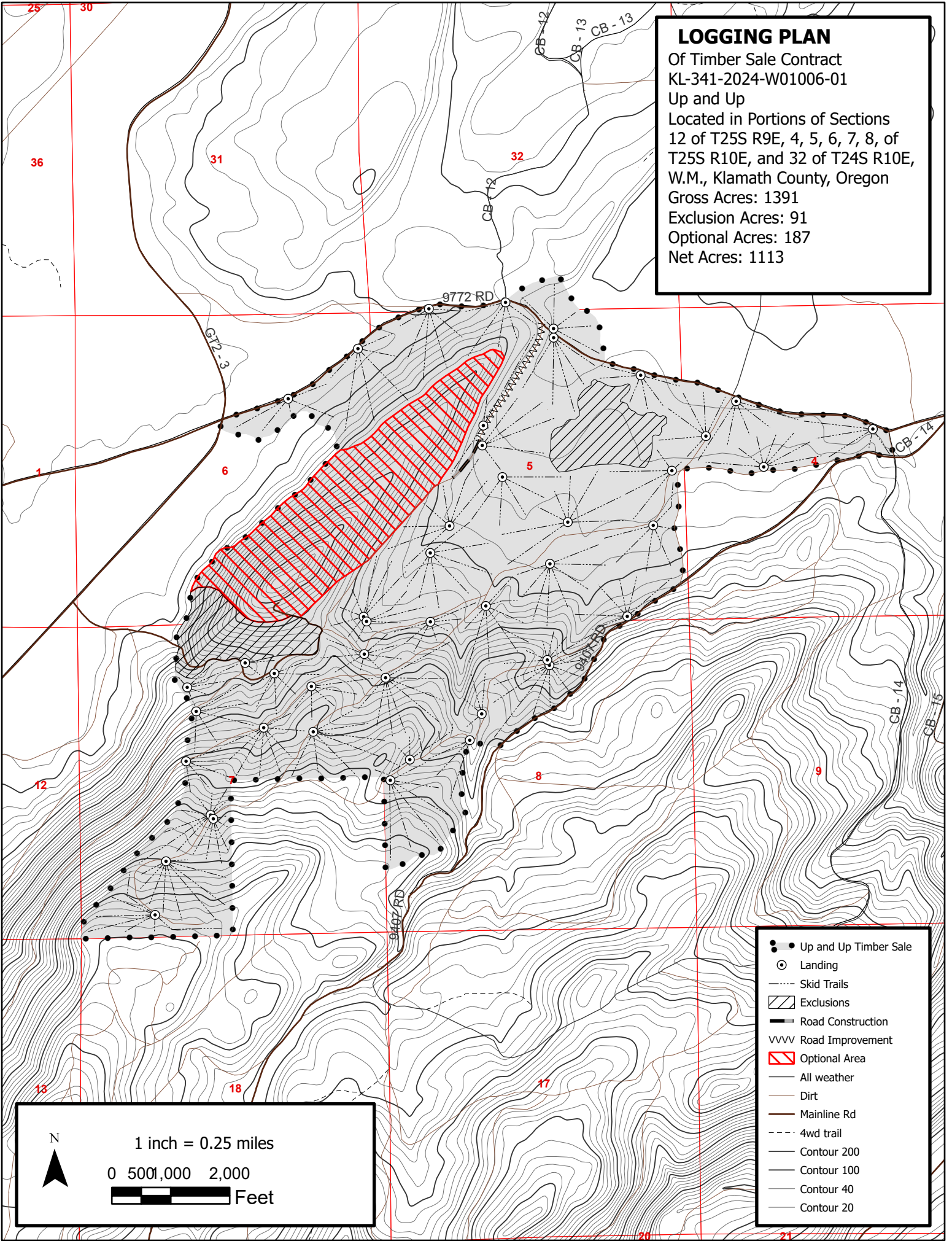
\$132.49 payment per / ton
 34.0% moisture
 \$87.44 payment / green ton
 \$2,885.63 payment / load

Pricing

\$87.44 payment / green ton
 \$74.86 costs / green ton
 \$11.23 Profit & Risk / green ton
 \$1.36 minimum bid

LOGGING PLAN

Of Timber Sale Contract
KL-341-2024-W01006-01
Up and Up
Located in Portions of Sections
12 of T25S R9E, 4, 5, 6, 7, 8, of
T25S R10E, and 32 of T24S R10E,
W.M., Klamath County, Oregon
Gross Acres: 1391
Exclusion Acres: 91
Optional Acres: 187
Net Acres: 1113



- Up and Up Timber Sale
- ⊙ Landing
- Skid Trails
- ▨ Exclusions
- Road Construction
- vvvv Road Improvement
- ▨ Optional Area
- All weather
- Dirt
- Mainline Rd
- 4wd trail
- Contour 200
- Contour 100
- Contour 40
- Contour 20

N

1 inch = 0.25 miles

0 500 1,000 2,000 Feet