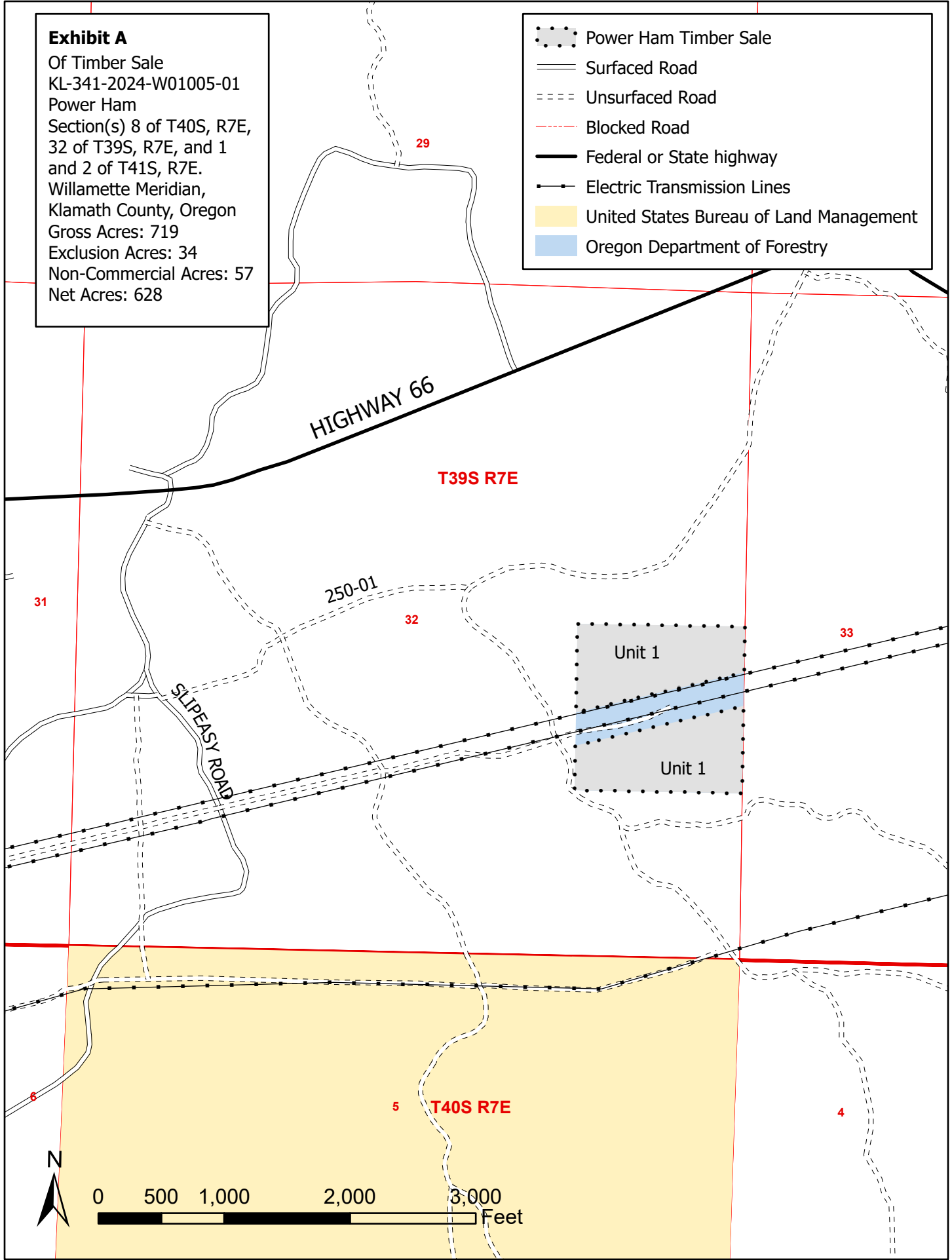


**Exhibit A**

Of Timber Sale  
KL-341-2024-W01005-01  
Power Ham  
Section(s) 8 of T40S, R7E,  
32 of T39S, R7E, and 1  
and 2 of T41S, R7E.  
Willamette Meridian,  
Klamath County, Oregon  
Gross Acres: 719  
Exclusion Acres: 34  
Non-Commercial Acres: 57  
Net Acres: 628

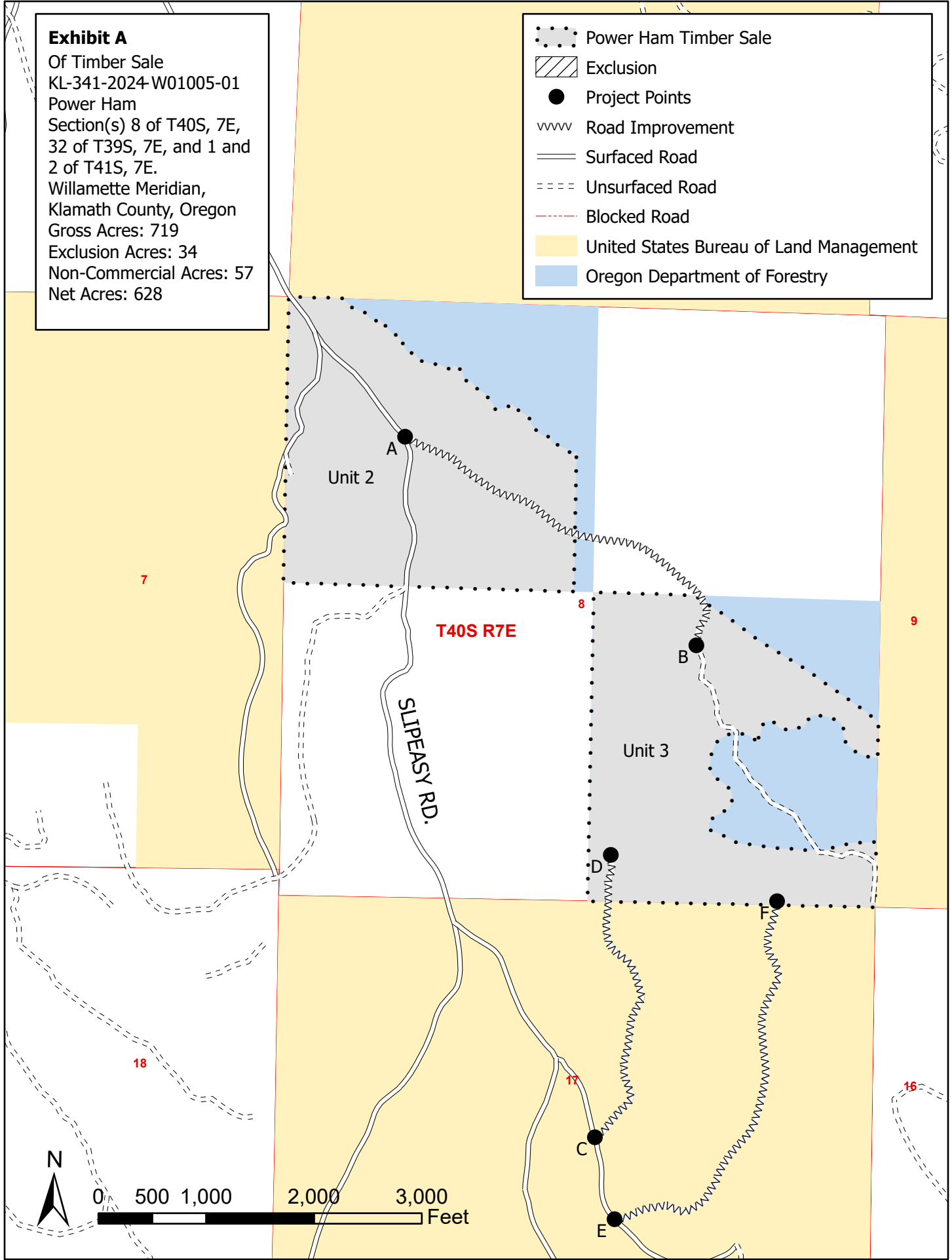
-  Power Ham Timber Sale
-  Surfaced Road
-  Unsurfaced Road
-  Blocked Road
-  Federal or State highway
-  Electric Transmission Lines
-  United States Bureau of Land Management
-  Oregon Department of Forestry



**Exhibit A**

Of Timber Sale  
KL-341-2024-W01005-01  
Power Ham  
Section(s) 8 of T40S, 7E,  
32 of T39S, 7E, and 1 and  
2 of T41S, 7E.  
Willamette Meridian,  
Klamath County, Oregon  
Gross Acres: 719  
Exclusion Acres: 34  
Non-Commercial Acres: 57  
Net Acres: 628

-  Power Ham Timber Sale
-  Exclusion
-  Project Points
-  Road Improvement
-  Surfaced Road
-  Unsurfaced Road
-  Blocked Road
-  United States Bureau of Land Management
-  Oregon Department of Forestry



**Exhibit A**

Of Timber Sale  
KL-341-2024-W01005-01  
Power Ham  
Section(s) 8 of T40S, 7E,  
32 of T39S, 7E, and 1 and  
2 of T41S, 7E.  
Willamette Meridian,  
Klamath County, Oregon  
Gross Acres: 719  
Exclusion Acres: 34  
Non-commercial Acres: 57  
Net Acres: 628

-  Power Ham Timber Sale
-  Exclusion
-  Project Points
-  Road Improvement
-  Surfaced Road
-  Unsurfaced Road
-  Blocked Road
-  Federal or State highway
-  United States Bureau of Land Management
-  Oregon Department of Forestry

