

Off The Edge Timber Sale
Appraisal (Chip)
 KL-341-2024-W01004-01

Location Gilchrist State Forest

Portions of sections 3, 4 of T25S R9E
 Portions of sections 33, 34 of T24S R9E
 Willamette Meridian, Klamath County, Oregon



Volume Harvestable

Total Acres		972	Ac	
Exclusion	13%	131	Ac	(bypass)
Total Harvest Area		841	Ac	
Optional Entry Area	9%	83	Ac	6 green tons / acre harvestable
General Harvest Area		758	Ac	8 green tons / acre harvestable

Value

6,562.00 total green tons
 \$1.37 min bid price / green ton

\$8,989.94 Approximate Value

The Volume harvestable refers to all material to be felled. PURCHASER may sort the felled product into Sawlog and Chip material. The price shall be the same for all material harvested. Refer to Exhibit C for details (Sawmill and Pulp). Refer to section 1740 in the contract for log prices.

STATE makes no guarantee as to the accuracy or amount harvestable for the terms of this contract.

Variables

Harvest Yields

841 Acres harvestable
 9% % optional entry area
 758 GHA acres (general harvest area)
 8 GHA green tons / acre
 6064.0 GHA total green tons
 83.0 OEA acres (optional entry area)
 6 OEA green tons / acre
 498.0 OEA total green tons
 6562.0 total green tons
 199 total loads
 0.24 Loads per acre

Assumptions

33.0	green tons / load
34.0%	moisture
21.8	bdt / load

Costs

Trucking Costs

\$750.00 haul cost / load
\$22.73 haul cost / green ton

Processing Costs

\$250.00 Chipper / hour
\$100.00 Skid / hour
1.17 hours / load
\$409.50 cost / load
\$12.41 cost / green Ton

Total Costs per Green Ton

\$38.45 Cutting
\$12.41 Processing
\$22.73 Trucking
\$1.26 Obligations
\$74.84 Total

Profit / Risk per Green Ton

15% Profit / Risk
\$11.23 Profit & Risk / green ton

Cutting Costs

\$150.00 Buncher Cost per hour
6562.00 Total Green Tons
7.80 Green Tons / acre
0.24 Loads / acre
5.00 acre cut / day (assume 10 hr day)
\$300.00 cost / acre
\$1,268.81 cost / load
\$38.45 Cost / green ton

Project Work (non-credit)

\$5,000.00 *Road Maintenance (sections 2130 and 2360)
\$2,250.00 *Pile Construction (sections 2550 and 2560)
\$1,000.00 *Road closures (section 2360)
\$8,250.00 total
\$1.26 cost / green ton

*Project Work (non-credit) costs are approximate. The actual cost will depend on operation conditions AND operative damages as determined by STATE.

Payment

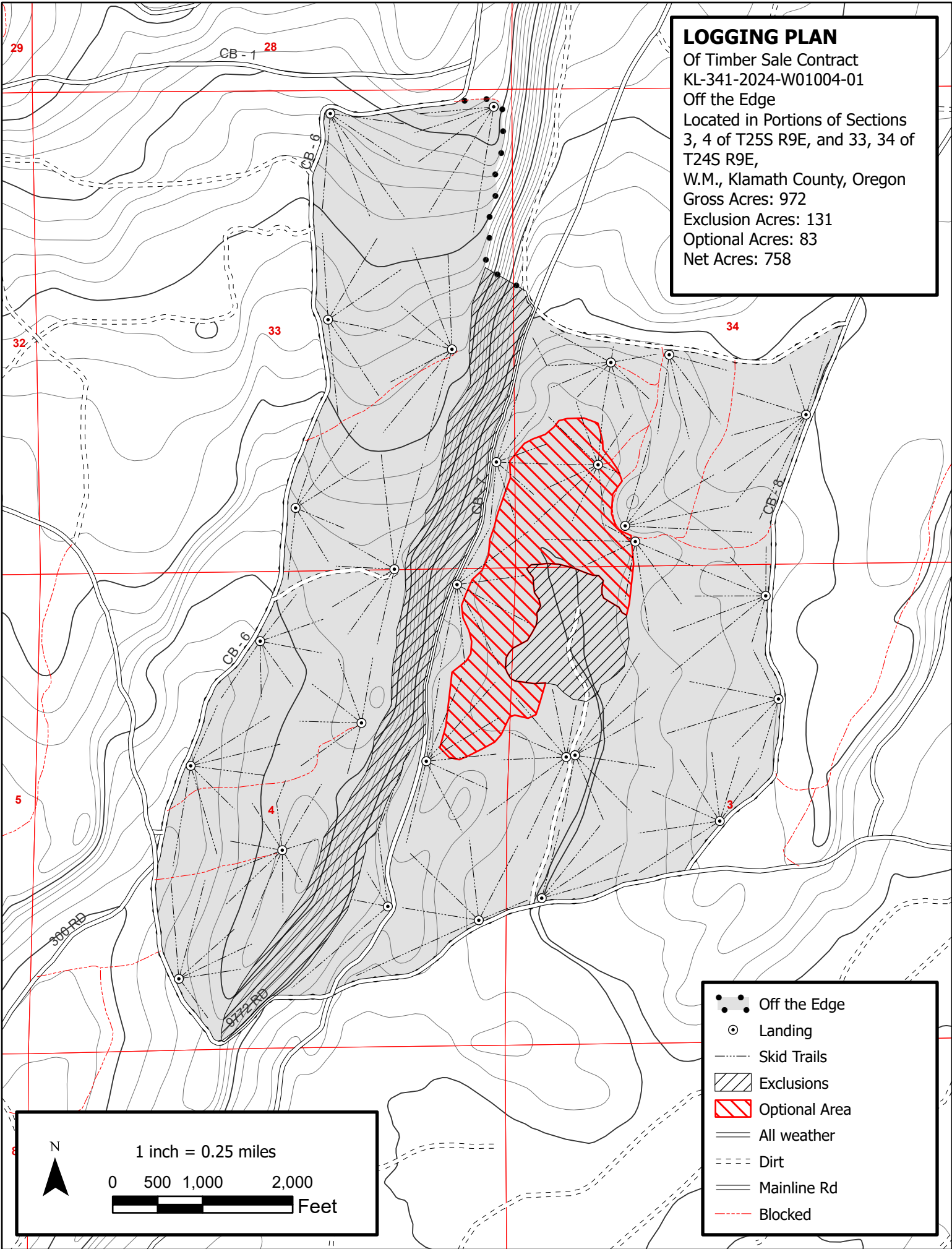
Payment

\$132.49 payment per / ton
34.0% moisture
\$87.44 payment / green ton
\$2,885.63 payment / load

Pricing

\$87.44 payment / green ton
\$74.84 costs / green ton
\$11.23 Profit & Risk / green ton
\$1.37 minimum bid

LOGGING PLAN
 Of Timber Sale Contract
 KL-341-2024-W01004-01
 Off the Edge
 Located in Portions of Sections
 3, 4 of T25S R9E, and 33, 34 of
 T24S R9E,
 W.M., Klamath County, Oregon
 Gross Acres: 972
 Exclusion Acres: 131
 Optional Acres: 83
 Net Acres: 758



- Off the Edge
- Landing
- Skid Trails
- Exclusions
- Optional Area
- All weather
- Dirt
- Mainline Rd
- Blocked

N

1 inch = 0.25 miles

0 500 1,000 2,000 Feet