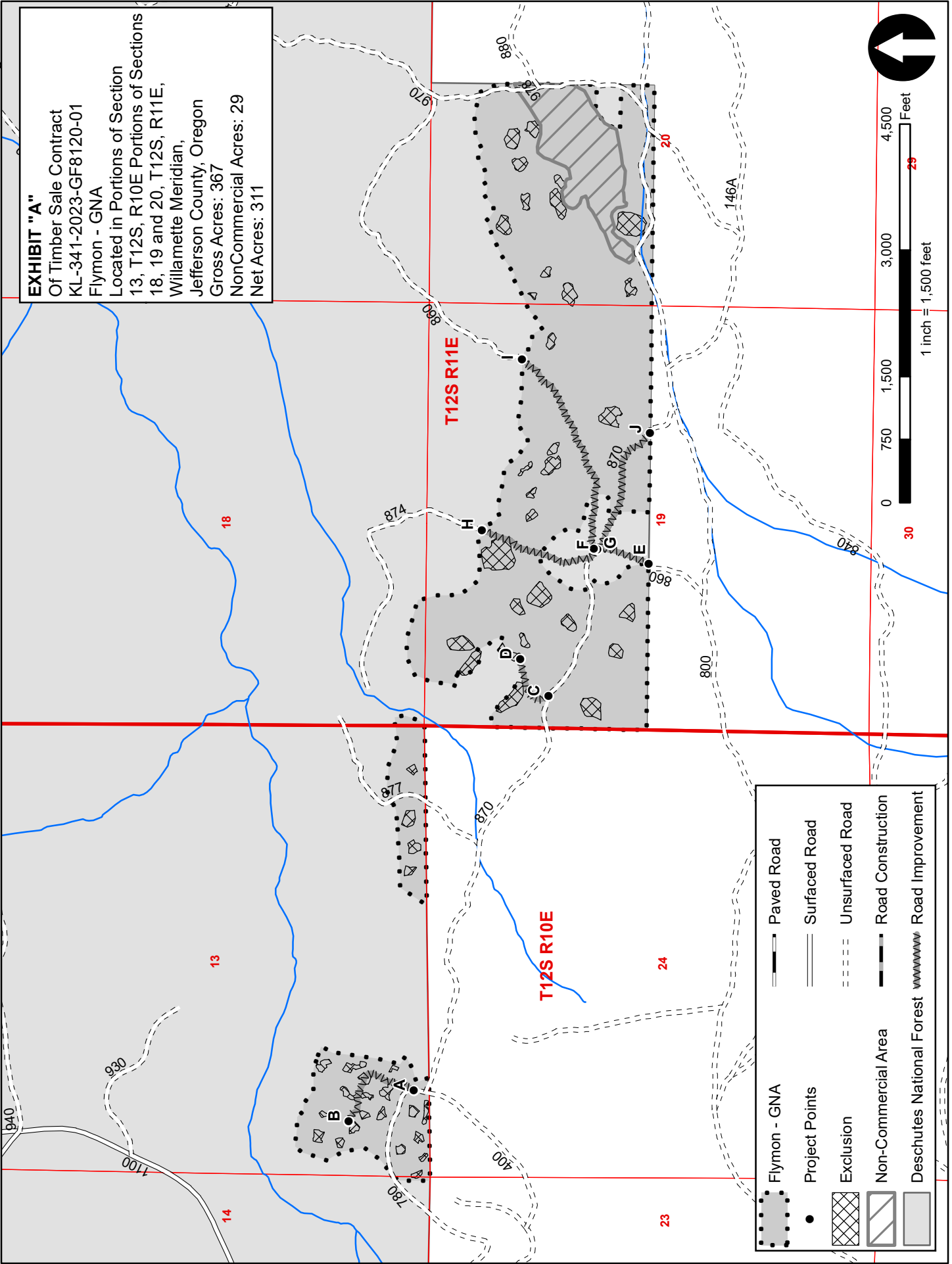


EXHIBIT "A"

Of Timber Sale Contract
KL-341-2023-GF8120-01
Flymon - GNA
Located in Portions of Section
13, T12S, R10E Portions of Sections
18, 19 and 20, T12S, R11E,
Willamette Meridian,
Jefferson County, Oregon
Gross Acres: 367
NonCommercial Acres: 29
Net Acres: 311



	Flymon - GNA		Paved Road
	Project Points		Surfaced Road
	Exclusion		Unsurfaced Road
	Non-Commercial Area		Road Construction
	Deschutes National Forest		Road Improvement

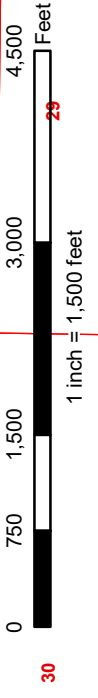
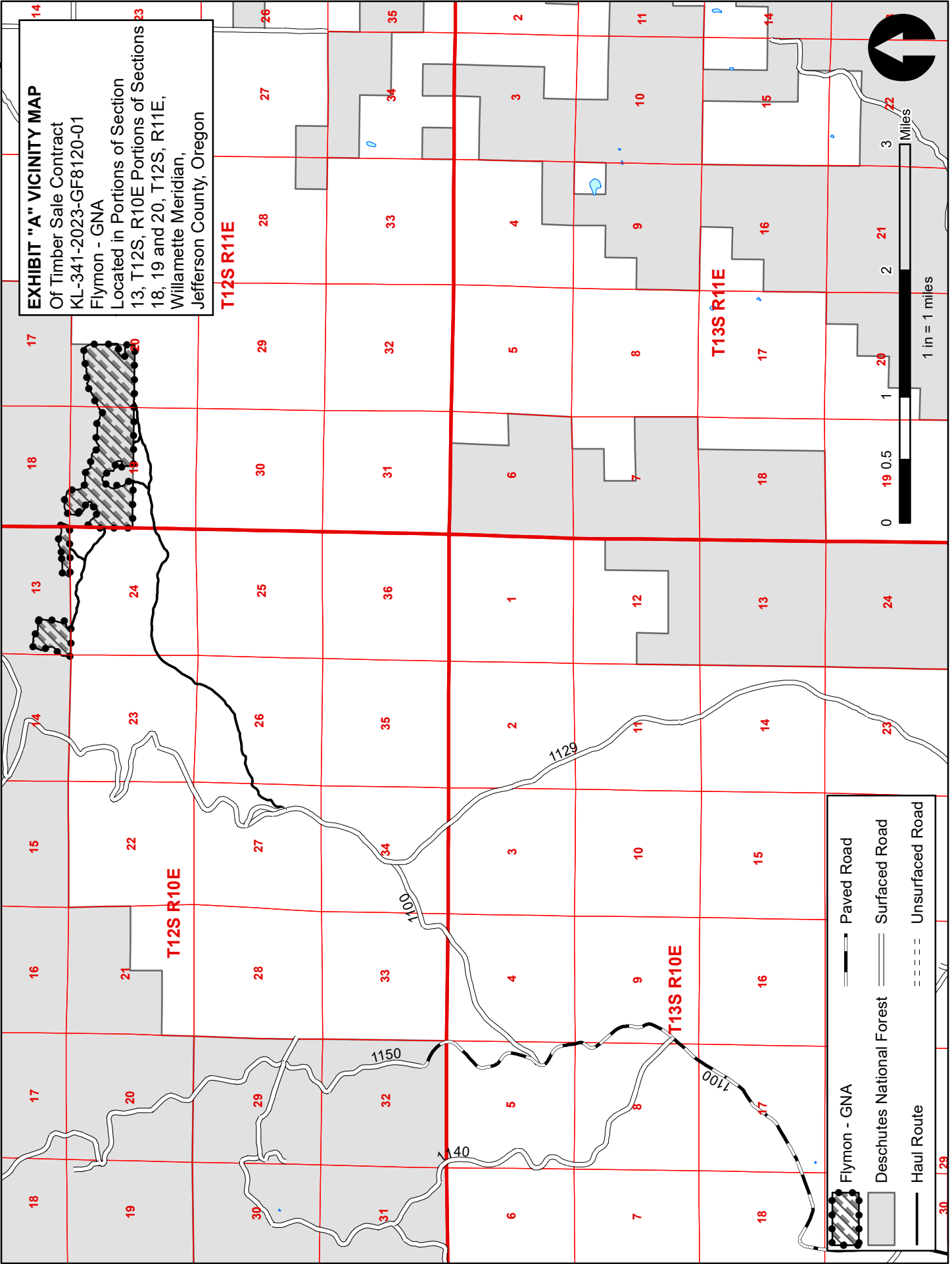


EXHIBIT "A" VICINITY MAP
 Of Timber Sale Contract
 KL-341-2023-GF8120-01
 Flymon - GNA
 Located in Portions of Section
 13, T12S, R10E Portions of Sections 23
 18, 19 and 20, T12S, R11E,
 Willamette Meridian,
 Jefferson County, Oregon



Flymon - GNA

- Flymon - GNA
- Deschutes National Forest
- Paved Road
- Surfaced Road
- Unsurfaced Road
- Haul Route

