

### Legend

- Timber Sale Boundary
- Posted Stream Buffer Boundary
- Right-of-Way Boundary
- ODF Ownership Boundary
- Paved Road
- Surfaced Road
- New Road Construction
- Recreation Trail
- Type-F Stream
- Type-N Stream - Perennial
- Type-N Stream - Seasonal
- Stream Buffer
- Section Lines

## EXHIBIT A

FOR TIMBER SALE CONTRACT #FG-341-2024-W00952-01  
BIBLE CREEK  
PORTIONS OF SECTION 34, T3S, R7W,  
PORTIONS OF SECTIONS 10 & 16, T4S, R7W, W.M.  
TILLAMOOK COUNTY, OREGON

Forest Grove District GIS  
November 2023

This product is for informational use and may not be suitable for legal, engineering, or surveying purposes.

1:12,000  
1 inch = 1,000 feet



APPROXIMATE NET ACRES	
UNIT 1	109 ACRES (PC)
UNIT 2	51 ACRES (PC)
UNIT 3	20 ACRES (PC)
UNIT 4	57 ACRES (PC)
UNIT 5	5 ACRES (R/W)
<hr/>	
TOTAL	242 ACRES

- Timber Sale Boundary
- Posted Stream Buffer Boundary
- Right-of-Way Boundary
- ODF Ownership Boundary
- Paved Road
- Surfaced Road
- New Road Construction
- Recreation Trail
- Type-F Stream
- Type-N Stream - Perennial
- Type-N Stream - Seasonal
- Stream Buffer
- Section Lines

FOR TIMBER SALE CONTRACT #FG-341-2024-W00952-01  
BIBLE CREEK  
PORTIONS OF SECTION 34, T3S, R7W,  
PORTIONS OF SECTIONS 10 & 16, T4S, R7W, W.M.  
TILLAMOOK COUNTY, OREGON

This product is for informational use and may not be suitable for legal, engineering, or surveying purposes.

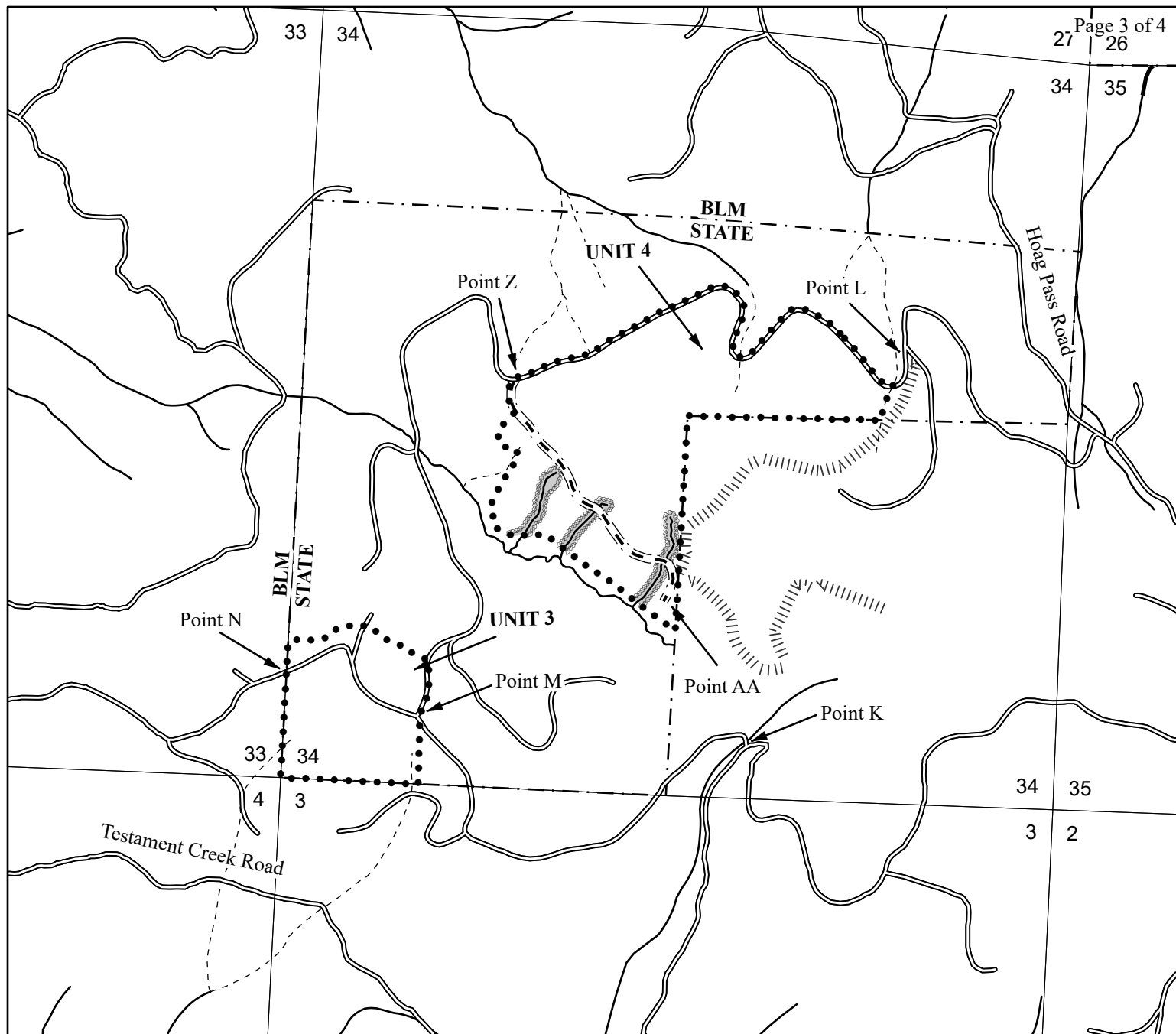
0      500      1,000      2,000

By car      By train      By bus      By bicycle

Feet



APPROXIMATE NET ACRES	
UNIT 1	109 ACRES (PC)
UNIT 2	51 ACRES (PC)
UNIT 3	20 ACRES (PC)
UNIT 4	57 ACRES (PC)
UNIT 5	5 ACRES (R/W)
<hr/>	
TOTAL	242 ACRES



### Legend

- ● ● Timber Sale Boundary
- ▨ ▨ ▨ Posted Stream Buffer Boundary
- ══ Right-of-Way Boundary
- ┌ ─ ┐ ODF Ownership Boundary
- ══ Surfacd Road
- - - New Road Construction
- |||||| Recreation Trail
- ▬ Type-F Stream
- ▬ Type-N Stream - Perennial
- - - Type-N Stream - Seasonal
- ▬ Stream Buffer
- ▭ Section Lines

## EXHIBIT A

FOR TIMBER SALE CONTRACT #FG-341-2024-W00952-01  
BIBLE CREEK  
PORTIONS OF SECTION 34, T3S, R7W,  
PORTIONS OF SECTIONS 10 & 16, T4S, R7W, W.M.  
TILLAMOOK COUNTY, OREGON

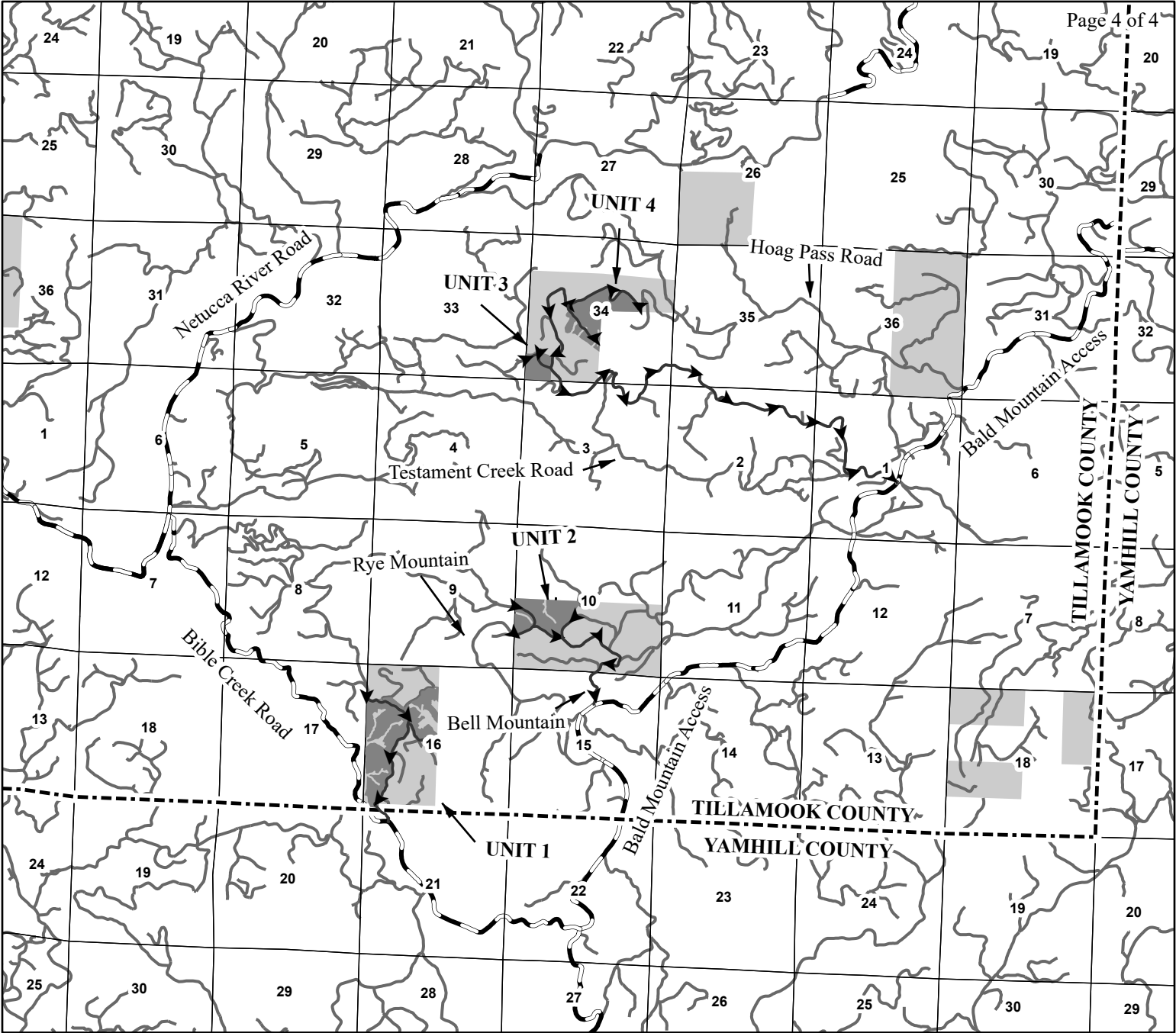
Forest Grove District GIS  
November 2023

This product is for informational use and may not be suitable for legal, engineering, or surveying purposes.

1:12,000  
1 inch = 1,000 feet



APROXIMATE NET ACRES	
UNIT 1	109 ACRES (PC)
UNIT 2	51 ACRES (PC)
UNIT 3	20 ACRES (PC)
UNIT 4	57 ACRES (PC)
UNIT 5	5 ACRES (R/W)
TOTAL	242 ACRES



**Legend**

- Timber Sale Area
- Haul Route Road
- Paved Road
- Surfaced Road
- County Line
- ODF Ownership Boundary
- Section Lines

**EXHIBIT A**

VICINITY MAP  
FOR TIMBER SALE CONTRACT #FG-341-2024-W00952-01  
BIBLE CREEK  
PORTIONS OF SECTION 34, T3S, R7W,  
PORTIONS OF SECTIONS 10 & 16, T4S, R7W, W.M.  
TILLAMOOK COUNTY, OREGON

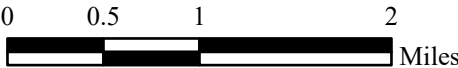
Forest Grove District GIS  
November 2023

This product is for informational use and may not be  
suitable for legal, engineering, or surveying purposes.



1:63,360

1 inch = 1 mile



APPROXIMATE NET ACRES = 242