

Legend

- • • • Timber Sale Boundary
- [- - -] ODF Ownership Boundary
- - - - Stream Buffer Boundary
- Surfaced Road
- - - - New Construction Road
- ~~~~~ Road Vacating
- ////// Recreational Trail
- Type-F Stream
- Type-N Stream
- Stream Buffer
- (HC) Helispot Construction
- (W) Waste Area
- Gate
- Section Line

EXHIBIT A

FOR TIMBER SALE CONTRACT #FG-341-2022-W00860-01
 DEVILOOZE
 PORTIONS OF SECTIONS 5, 6, 7, & 8, T1N, R5W, W.M.,
 TILLAMOOK COUNTY, OREGON

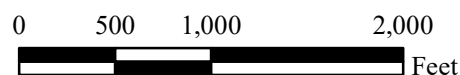
Forest Grove District GIS
 August, 2021

This product is for informational use and may not be
 suitable for legal, engineering, or surveying purposes.



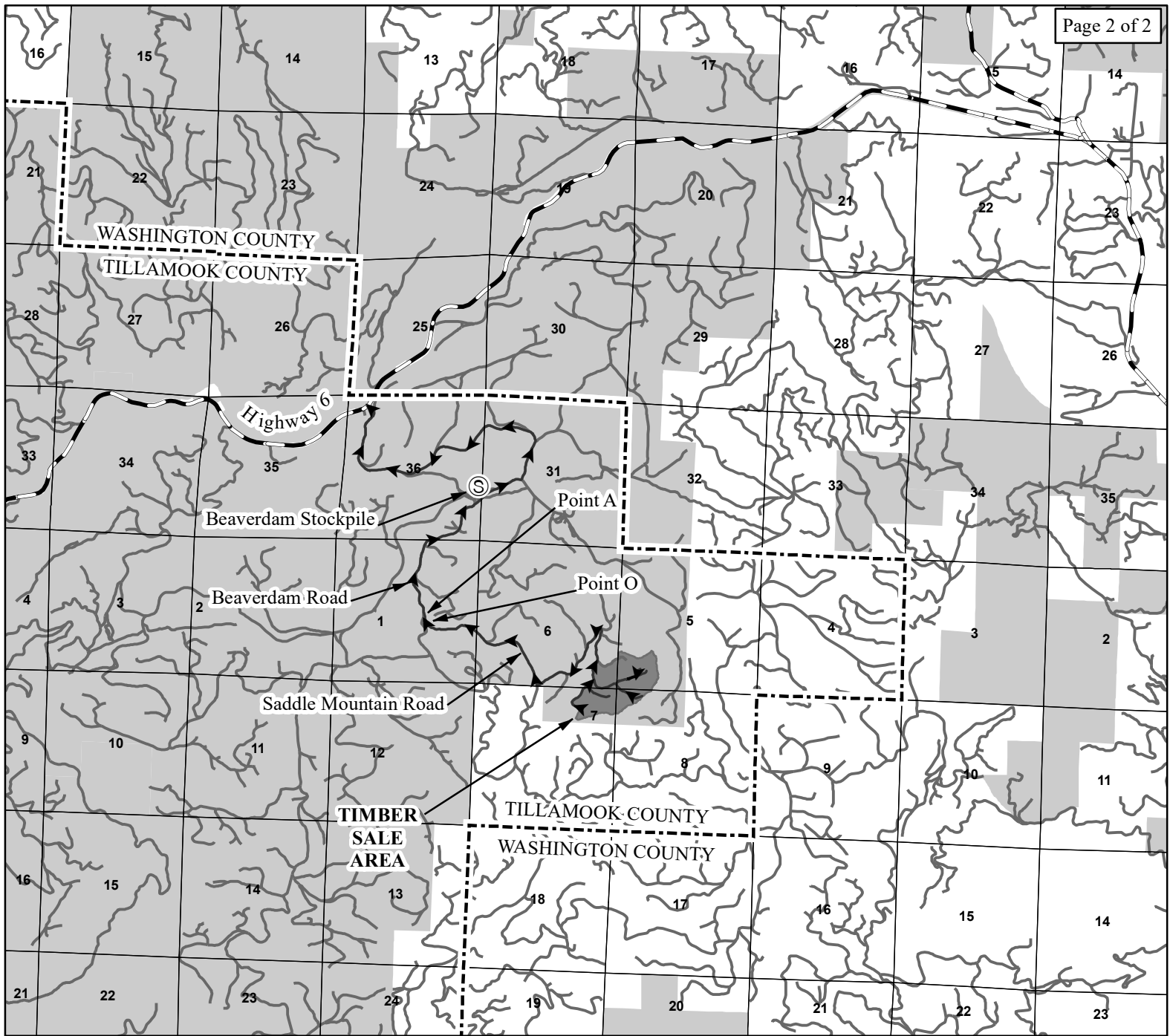
1:12,000

1 inch = 1,000 feet



APPROXIMATE NET ACRES

TOTAL 97 ACRES (MC)



Legend









-  Timber Sale Area
-  Haul Route Road
-  Highway
-  Surfaced Road
-  Stockpile
-  ODF Ownership Boundary
-  County Line
-  Section Line

EXHIBIT A

VICINITY MAP
FOR TIMBER SALE CONTRACT #FG-341-2022-W00860-01
DEVILOOZE
PORTIONS OF SECTIONS 5, 6, 7, & 8, T1N, R5W, W.M.,
TILLAMOOK COUNTY, OREGON

Forest Grove District GIS
August, 2021

This product is for informational use and may not be
suitable for legal, engineering, or surveying purposes.

1:63,360

1 inch = 1 mile

