

Legend

- Timber Sale Boundary
- Stream Buffer Boundary
- == Paved Roads
- Surfacd Roads
- - - New Road Construction
- Type-F Stream
- Type-N Stream
- Stream Buffer
- /// Reforestation Area
- (HC) Helispot Contstruction
- County Lines
- Section Lines

EXHIBIT A

FOR TIMBER SALE CONTRACT #FG-341-2021-W00268-01
 ROOTLESS ROGERS
 PORTIONS OF SECTIONS 19, 20, 29 & 30, T2N, R5W, W.M.,
 WASHINGTON COUNTY, OREGON

Forest Grove District GIS
 February, 2021

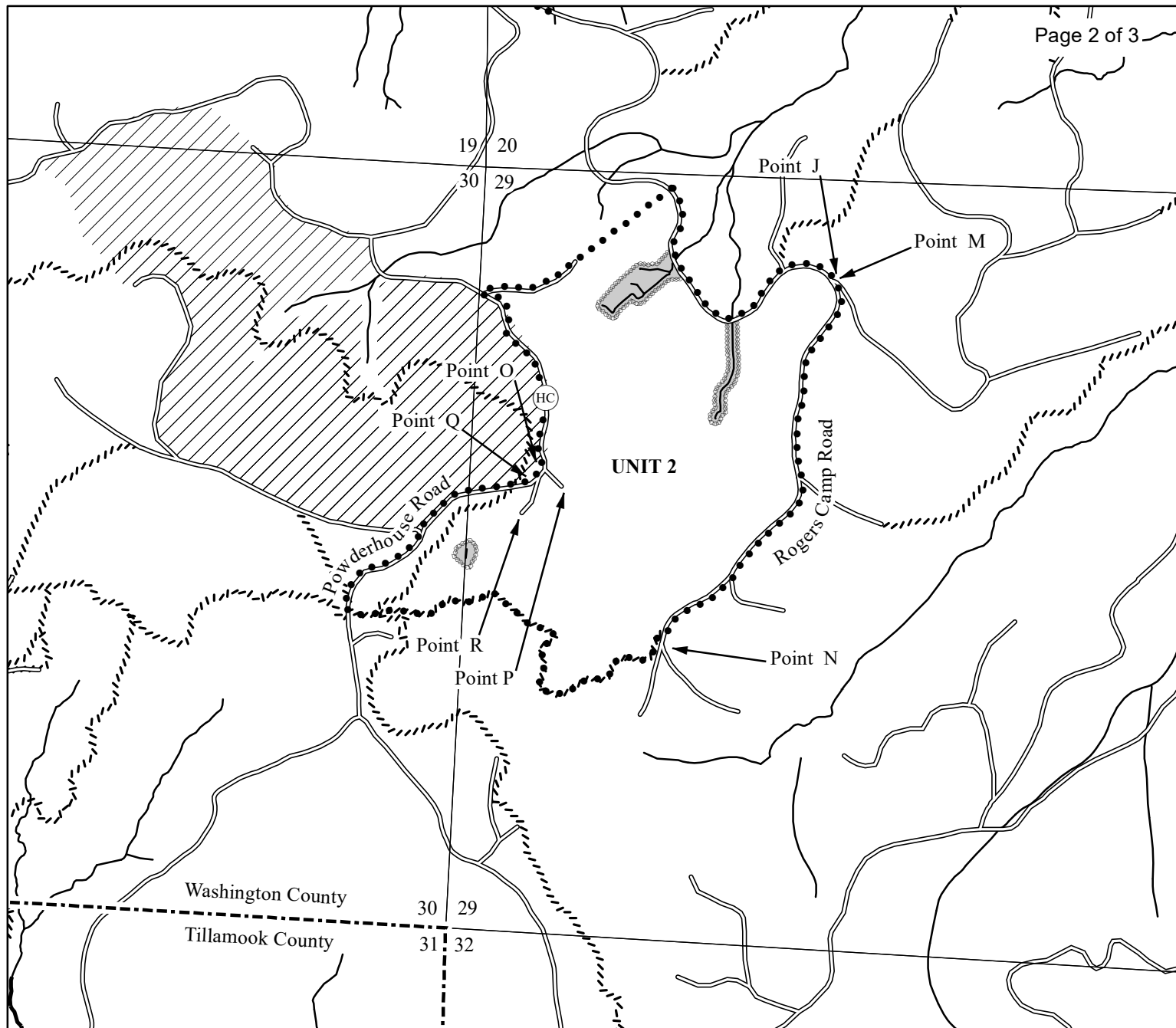
This product is for informational use and may not be
 suitable for legal, engineering, or surveying purposes.

1:12,000
 1 inch = 1,000 feet



APPROXIMATE NET ACRES

UNIT 1	71 ACRES (MC)
UNIT 2	111 ACRES (MC)
TOTAL	182 ACRES



Legend

- Timber Sale Boundary
- Stream Buffer Boundary
- Surfaced Roads
- ////// Recreation Trail
- Type-F Stream
- Type-N Stream
- Stream Buffer
- ////// Reforestation Area
- (HC) Helispot Construction
- County Lines
- Section Lines

EXHIBIT A

FOR TIMBER SALE CONTRACT #FG-341-2021-W00268-01
 ROOTLESS ROGERS
 PORTIONS OF SECTIONS 19, 20, 29 & 30, T2N, R5W, W.M.,
 WASHINGTON COUNTY, OREGON

Forest Grove District GIS
 February, 2021

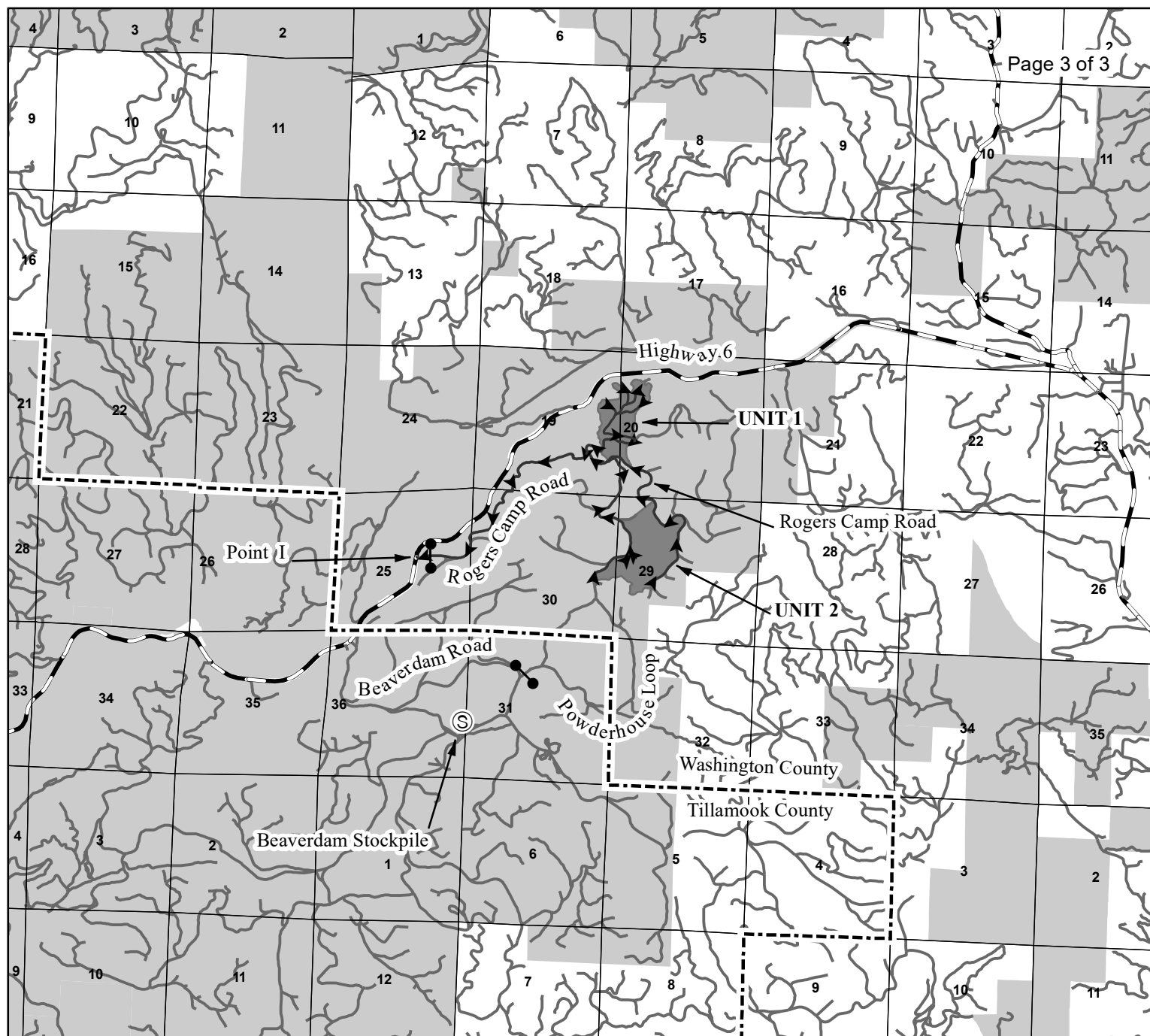
This product is for informational use and may not be
 suitable for legal, engineering, or surveying purposes.

1:12,000
 1 inch = 1,000 feet



APPROXIMATE NET ACRES

UNIT 1	71 ACRES (MC)
UNIT 2	111 ACRES (MC)
TOTAL	182 ACRES



Legend

- Timber Sale Area
- Haul Route Roads
- Paved Roads
- Surfaced Roads
- Stockpile
- Gate
- ODF Ownership
- County Lines
- Section Lines

EXHIBIT A

VICINITY MAP
FOR TIMBER SALE CONTRACT #FG-341-2021-W00268-01
ROOTLESS ROGERS
PORTIONS OF SECTIONS 19, 20, 29, & 30, T1N, R5W, W.M.,
WASHINGTON COUNTY, OREGON

Forest Grove District GIS
February, 2021

This product is for informational use and may not be
suitable for legal, engineering, or surveying purposes.

1:63,360

1 inch = 1 mile

