

### EXHIBIT A

FOR TIMBER SALE CONTRACT #FG-341-2021-W00232-01  
 PORK BELLY  
 PORTIONS OF SECTIONS 11 & 12, T3N, R6W, W.M.,  
 TILLAMOOK COUNTY, OREGON

Forest Grove District GIS  
 June, 2020

This product is for informational use and may not be  
 suitable for legal, engineering, or surveying purposes.

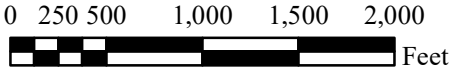


#### LEGEND

- Timber Sale Boundary
- - - - - Stream Buffer Boundary
- . - . - ODF Ownership Boundary
- ==== Surfaced Road
- - - - - Unsurfaced Road
- Type-N Stream
- ▒ Stream Buffer
- ▨ Reforested Area
- ⊕ Helispot
- ▭ Section Line

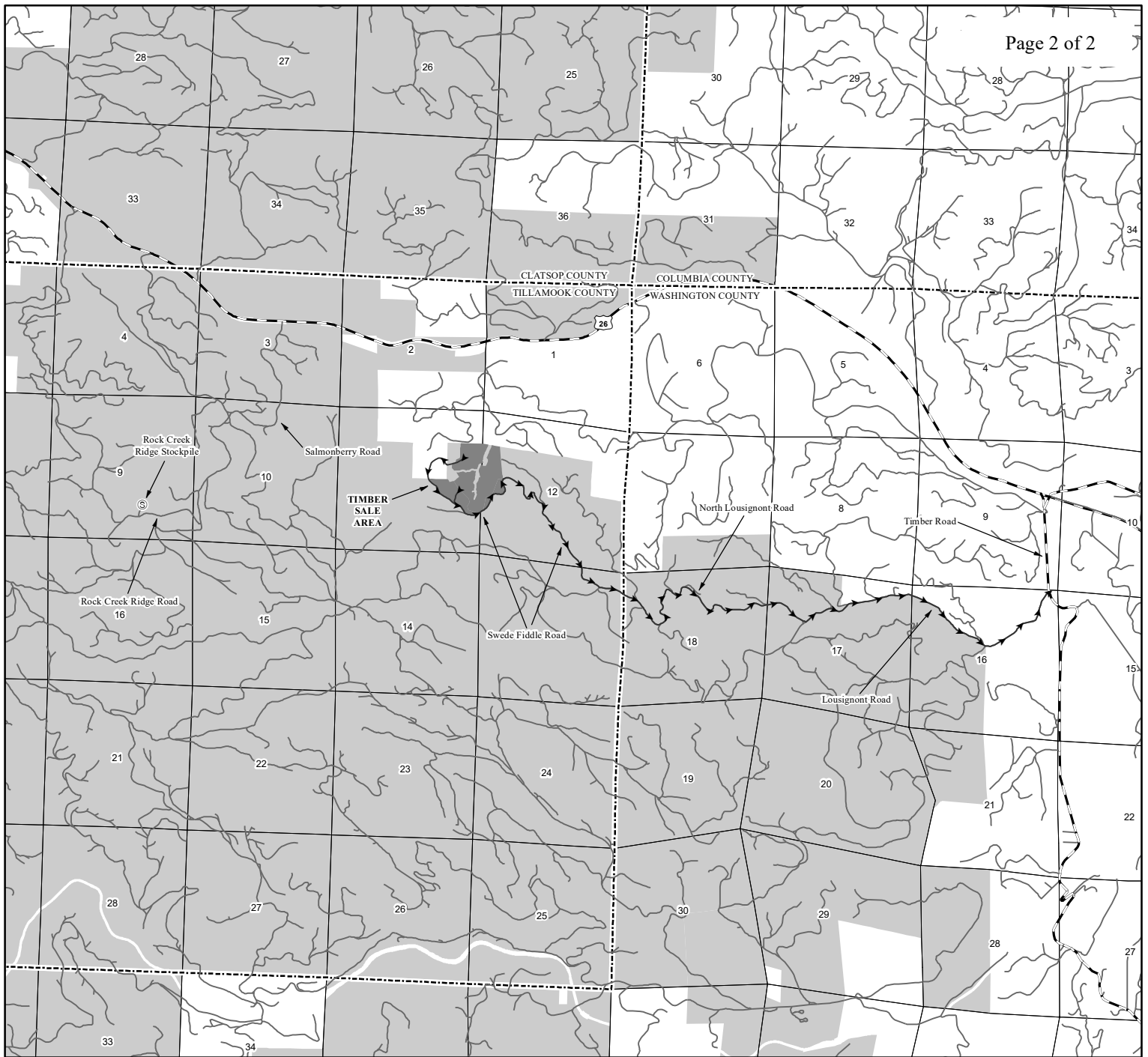
1:12,000

1 inch = 1,000 feet











APPROXIMATE NET ACRES

91 ACRES (MC)



**LEGEND**

-  Timber Sale Area
-  Haul Route Roads
-  Highways
-  Surfaced Roads
-  Stockpiles
-  ODF Ownership
-  County Line
-  Section Line

**EXHIBIT A**

VICINITY MAP  
 FOR TIMBER SALE CONTRACT #FG-341-2021-W00232-01  
 PORK BELLY  
 PORTIONS OF SECTIONS 11 & 12, T3N, R6W, W.M.,  
 TILLAMOOK COUNTY, OREGON

Forest Grove District GIS  
 June, 2020

This product is for informational use and may not be  
 suitable for legal, engineering, or surveying purposes.



1:63,360  
 1 inch = 1 mile

