

## Page 1 of 4

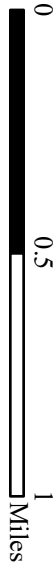
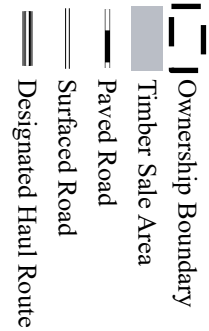
## Ownership Boundary

ODR

14, 15, 16, 21, 22, & 23

OF T8N, R9W, W.M.,

CLATSOP COUNTY, OREGON




⑤ Stockpile Site



Gate

Timber Sale Area

 Paved Road

Designated Haul Route

**T8N, R7W**  
**T8N, R6W**

**STATE**  
**PRIVATE**

Big Noise  
Quarry  
(6"-0" Pit Run)

(6"-0" Pit Run)

$$\frac{T_{8N}, R_{7W}}{T_{7N}, R_{7W}}$$

011

0.

( (

٥

Mile

[illegible]

**PRIVATE  
STATE**

MP 95

## Page 2 of 4

Page 2 of 4

Page 2 of 4

Page 2 of 4

Page 2 of 4

Page 2 of 4

Page 2 of 4

Page 2 of 4

Page 2 of 4

Page 2 of 4

Page 2 of 4

Page 2 of 4



**EXHIBIT "A"**

OF TIMBER SALE CONTRACT  
NO. AT-341-2025-W01074-01

ODR

PORTIONS OF SECTIONS

14, 15, 16, 21, 22, & 23

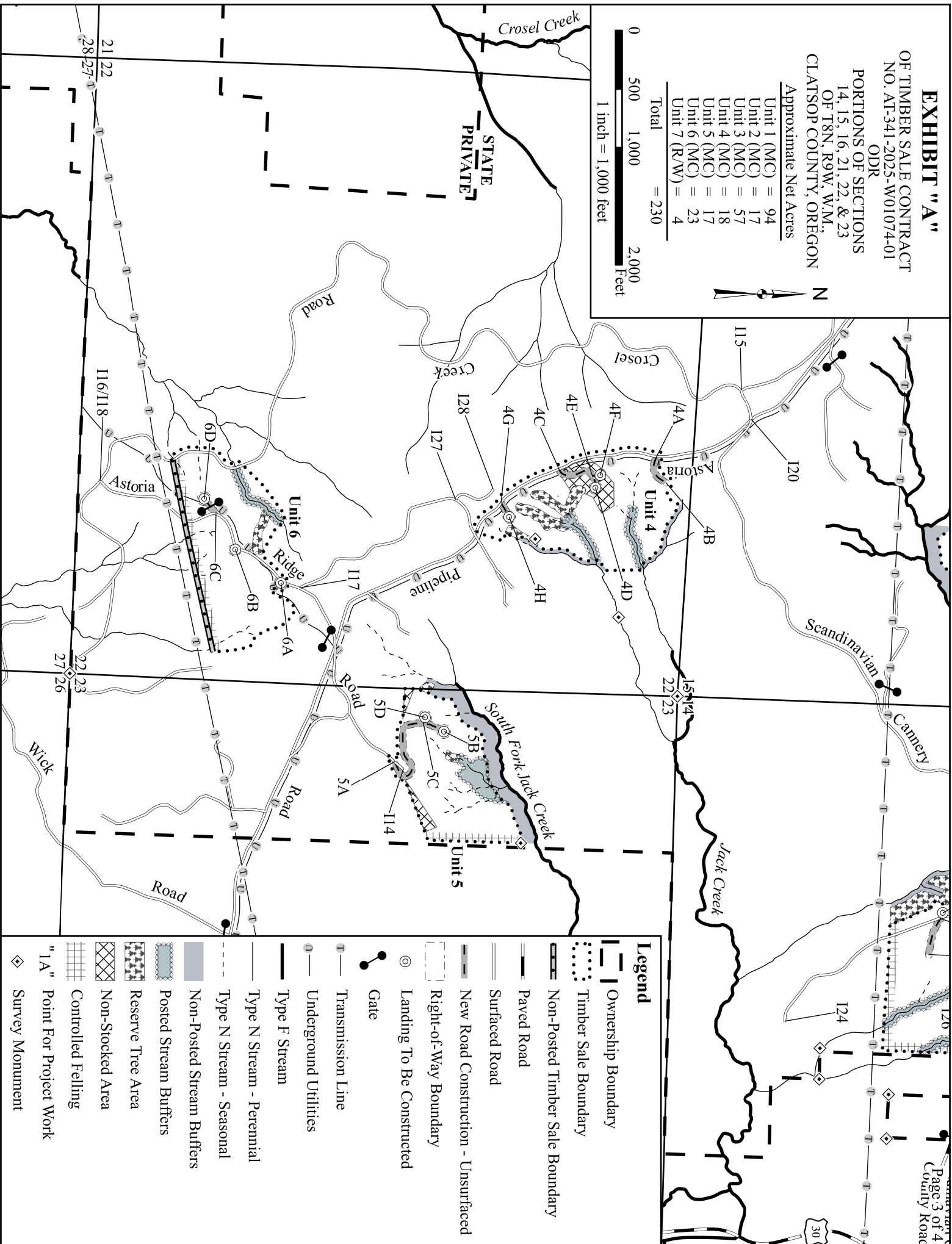
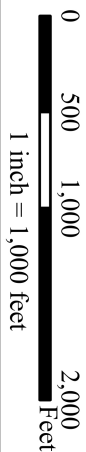
OF T8N, R9W, W.M.,

CLATSOP COUNTY, OREGON

Approximate Net Acres

Unit 1 (MC)	=	94
Unit 2 (MC)	=	17
Unit 3 (MC)	=	57
Unit 4 (MC)	=	18
Unit 5 (MC)	=	17
Unit 6 (MC)	=	23
Unit 7 (R/W)	=	4

Total = 230



# EXHIBIT "A"

OF TIMBER SALE CONTRACT  
NO. AT-341-2025-W01074-01

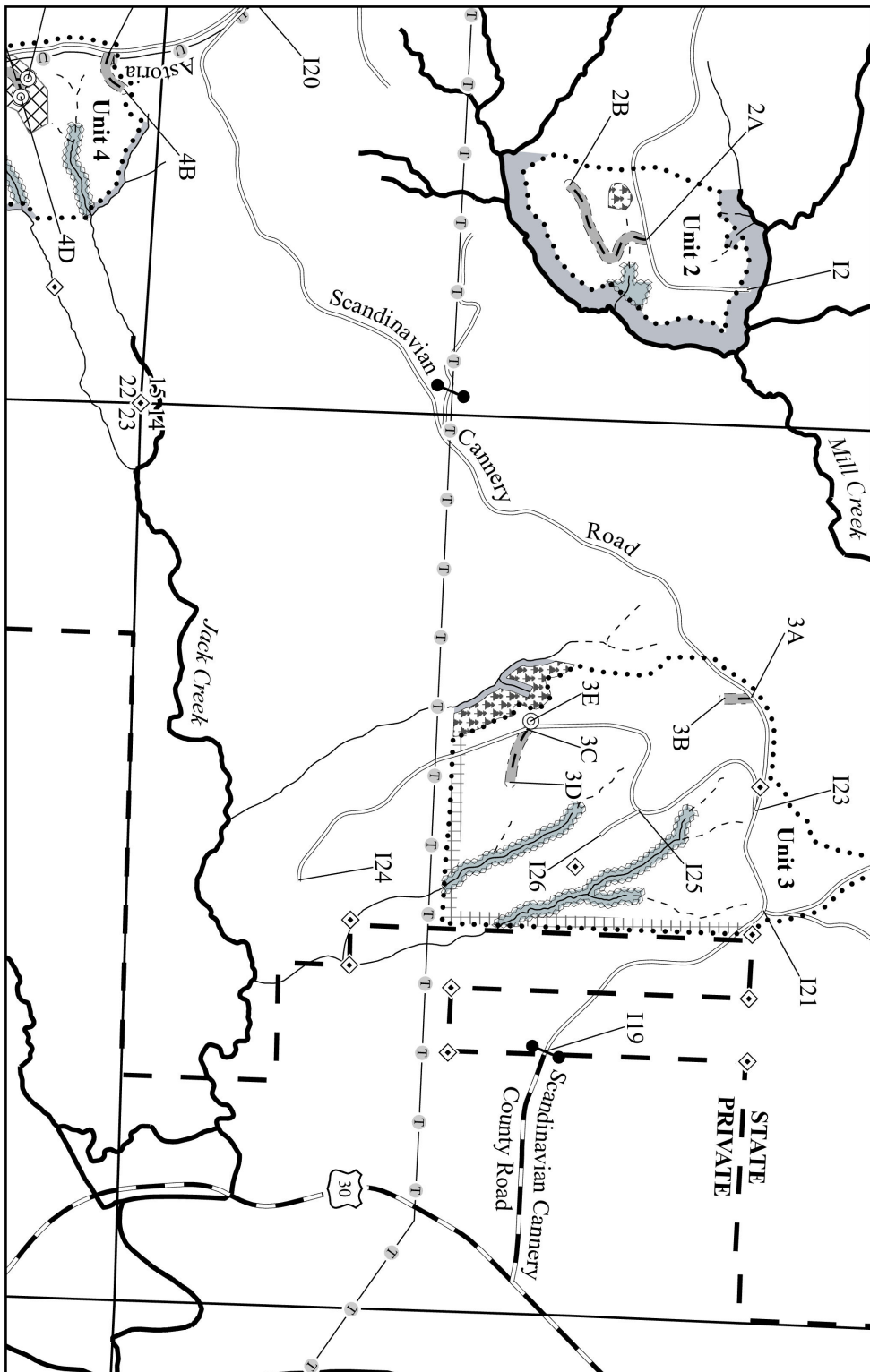
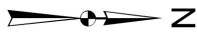
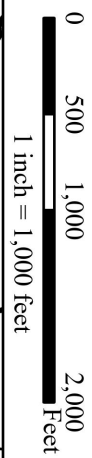
ODR

PORTIONS OF SECTIONS  
14, 15, 16, 21, 22, & 23  
OF T8N, R9W, W.M.,  
CLATSOP COUNTY, OREGON

Approximate Net Acres

Unit 1 (MC)	=	94
Unit 2 (MC)	=	17
Unit 3 (MC)	=	57
Unit 4 (MC)	=	18
Unit 5 (MC)	=	17
Unit 6 (MC)	=	23
Unit 7 (R/W)	=	4

Total = 230



**Legend**

- Ownership Boundary
- Timber Sale Boundary
- Non-Posted Timber Sale Boundary
- Paved Road
- Surface Road
- New Road Construction - Unsurfaced
- Right-of-Way Boundary
- Landing To Be Constructed
- Gate
- Transmission Line
- Underground Utilities
- Type F Stream
- Type N Stream - Perennial
- Type N Stream - Seasonal
- Non-Posted Stream Buffers
- Posted Stream Buffers
- Reserve Tree Area
- Non-Stocked Area
- Controlled Felling
- "1A" Point For Project Work
- Survey Monument