

EXHIBIT "A"

VICINITY MAP

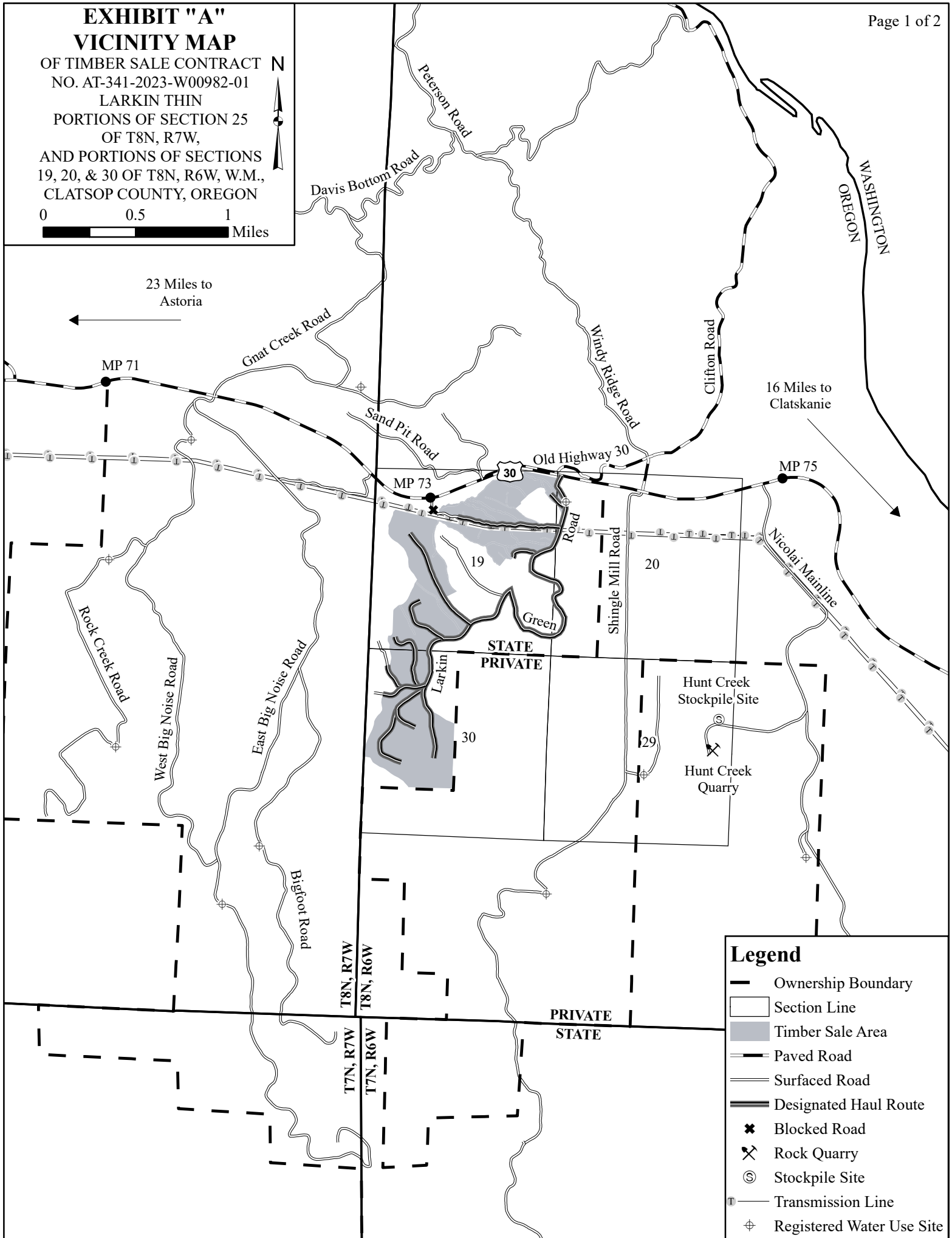
OF TIMBER SALE CONTRACT
NO. AT-341-2023-W00982-01
LARKIN THIN
PORTIONS OF SECTION 25
OF T8N, R7W,
AND PORTIONS OF SECTIONS
19, 20, & 30 OF T8N, R6W, W.M.,
CLATSOP COUNTY, OREGON

0 0.5 1 Miles



23 Miles to
Astoria

16 Miles to
Clatskanie



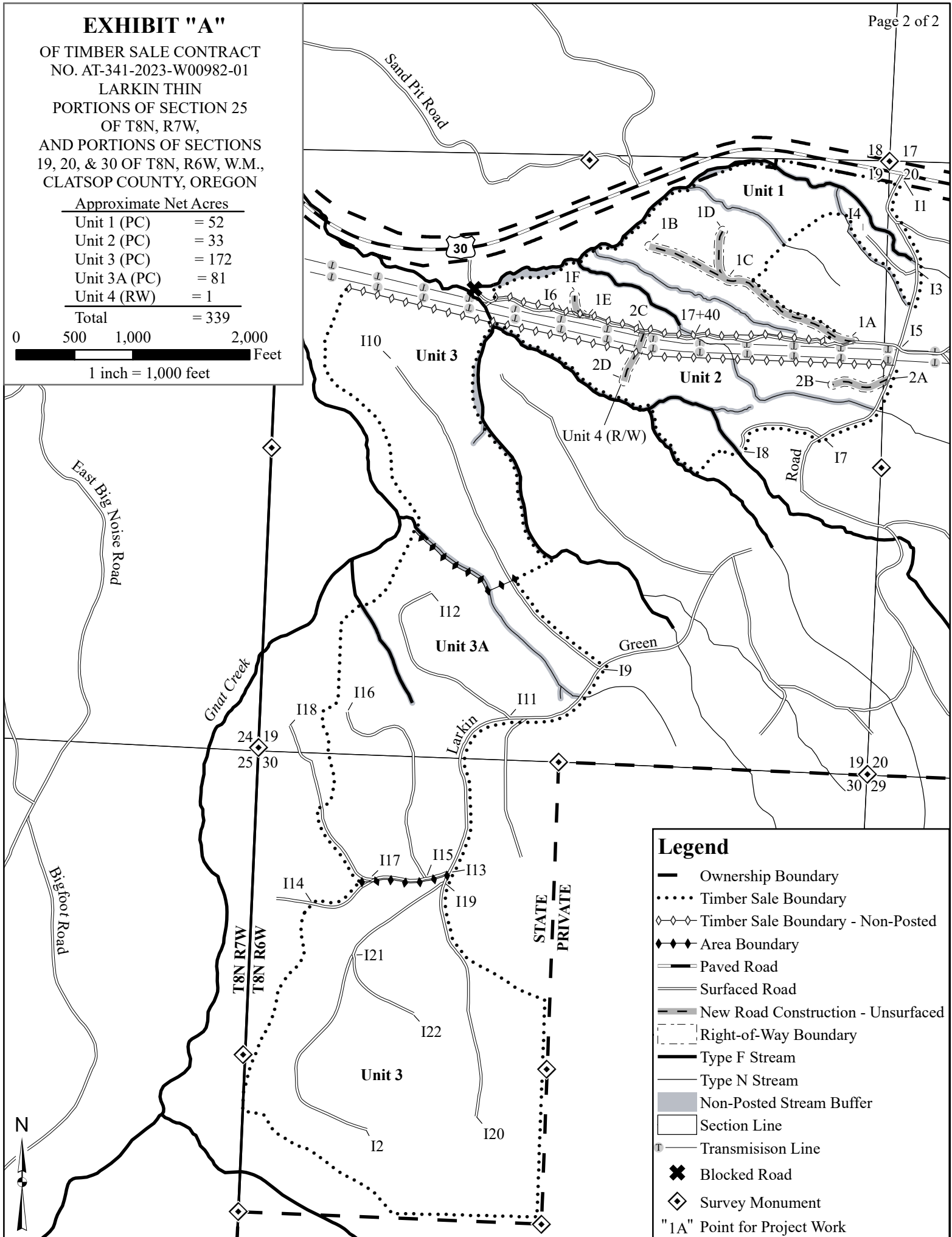
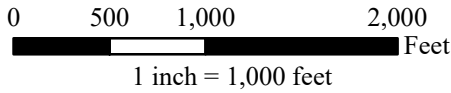
Legend

- Ownership Boundary
- Section Line
- Timber Sale Area
- Paved Road
- Surfaced Road
- Designated Haul Route
- Blocked Road
- Rock Quarry
- Stockpile Site
- Transmission Line
- Registered Water Use Site

EXHIBIT "A"

OF TIMBER SALE CONTRACT
NO. AT-341-2023-W00982-01
LARKIN THIN
PORTIONS OF SECTION 25
OF T8N, R7W,
AND PORTIONS OF SECTIONS
19, 20, & 30 OF T8N, R6W, W.M.,
CLATSOP COUNTY, OREGON

Approximate Net Acres	
Unit 1 (PC)	= 52
Unit 2 (PC)	= 33
Unit 3 (PC)	= 172
Unit 3A (PC)	= 81
Unit 4 (RW)	= 1
Total	= 339



Legend

- Ownership Boundary
- Timber Sale Boundary
- ◇—◇ Timber Sale Boundary - Non-Posted
- ◆—◆ Area Boundary
- Paved Road
- Surfaced Road
- New Road Construction - Unsurfaced
- - - Right-of-Way Boundary
- Type F Stream
- Type N Stream
- Non-Posted Stream Buffer
- Section Line
- Transmission Line
- Blocked Road
- Survey Monument
- "1A" Point for Project Work