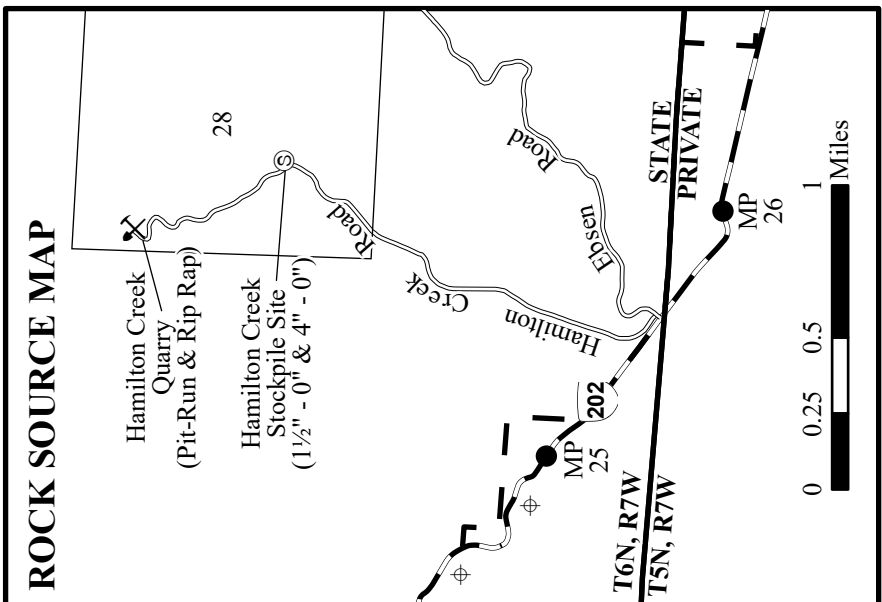
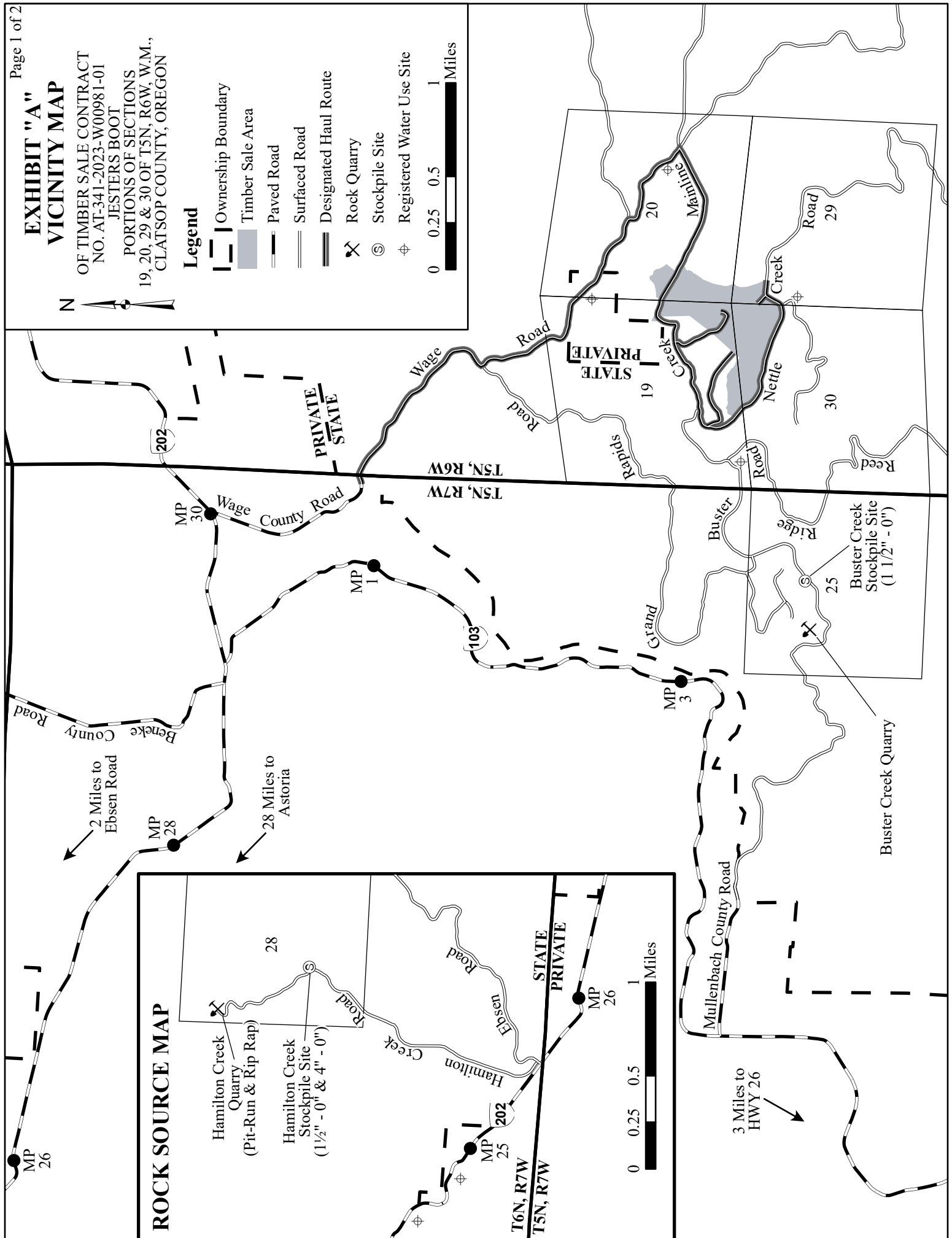


EXHIBIT "A" VICINITY MAP

OF TIMBER SALE CONTRACT
NO. AT-341-2023-W00981-01
JESTERS BOOT
PORTIONS OF SECTIONS
19, 20, 29 & 30 OF T5N, R6W, W.M.,
CLATSOP COUNTY, OREGON

Legend

- Ownership Boundary
 - Timber Sale Area
 - Paved Road
 - Surfaced Road
 - Designated Haul Route
 - Rock Quarry
 - Stockpile Site
 - Registered Water Use Site
- 0 0.25 0.5 1 Miles



2 Miles to
Ebsen Road

28 Miles to
Astoria

3 Miles to
HWY 26

Buster Creek
Stockpile Site
(1 1/2" - 0")

Buster Creek
Quarry

STATE
PRIVATE

PRIVATE
STATE

T5N, R6W
T5N, R7W

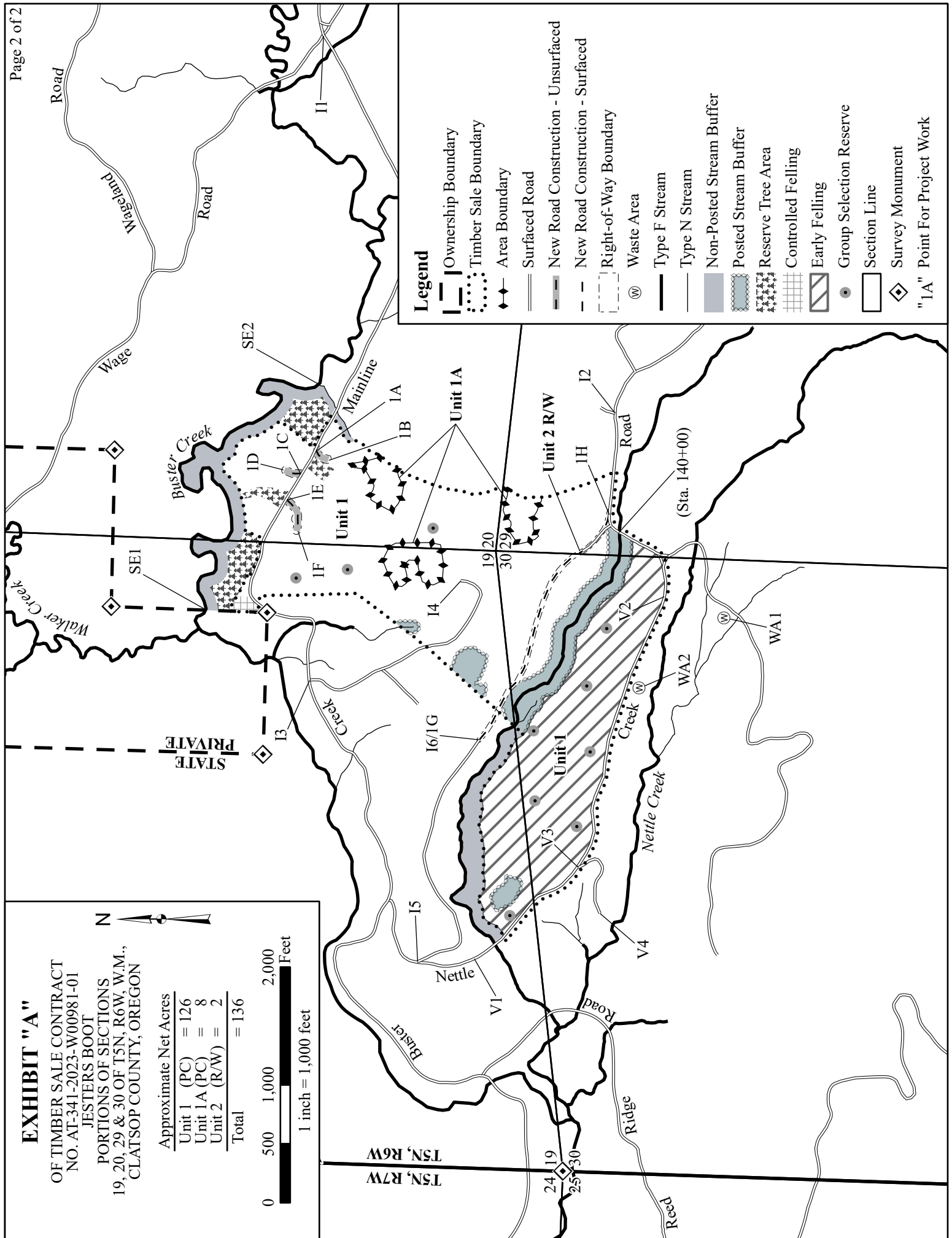
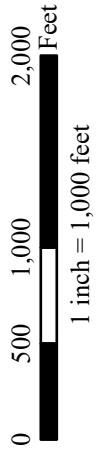
T6N, R7W
T5N, R7W

0 0.25 0.5 1 Miles

0 0.25 0.5 1 Miles

EXHIBIT "A"
 OF TIMBER SALE CONTRACT
 NO. AT-341-2023-W00981-01
 JESTERS BOOT
 PORTIONS OF SECTIONS
 19, 20, 29 & 30 OF T5N, R6W, W.M.,
 CLATSOP COUNTY, OREGON

Approximate Net Acres	
Unit 1 (PC)	= 126
Unit 1A (PC)	= 8
Unit 2 (R/W)	= 2
Total	= 136



Legend

- Ownership Boundary
- Timber Sale Boundary
- Area Boundary
- Surfaced Road
- New Road Construction - Unsurfaced
- New Road Construction - Surfaced
- Right-of-Way Boundary
- Waste Area
- Type F Stream
- Type N Stream
- Non-Posted Stream Buffer
- Posted Stream Buffer
- Reserve Tree Area
- Controlled Felling
- Early Felling
- Group Selection Reserve
- Section Line
- Survey Monument
- "1A" Point For Project Work