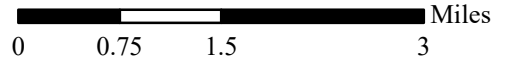


EXHIBIT "A" MAP VICINITY

OF TIMBER SALE CONTRACT
NO. AT-341-2023-W00978-01
CATTLE DRIVE
PORTIONS OF SECTIONS 4, 9,
10, 11, 14, & 15 OF T6N, R6W,
W.M., CLATSOP COUNTY, OREGON

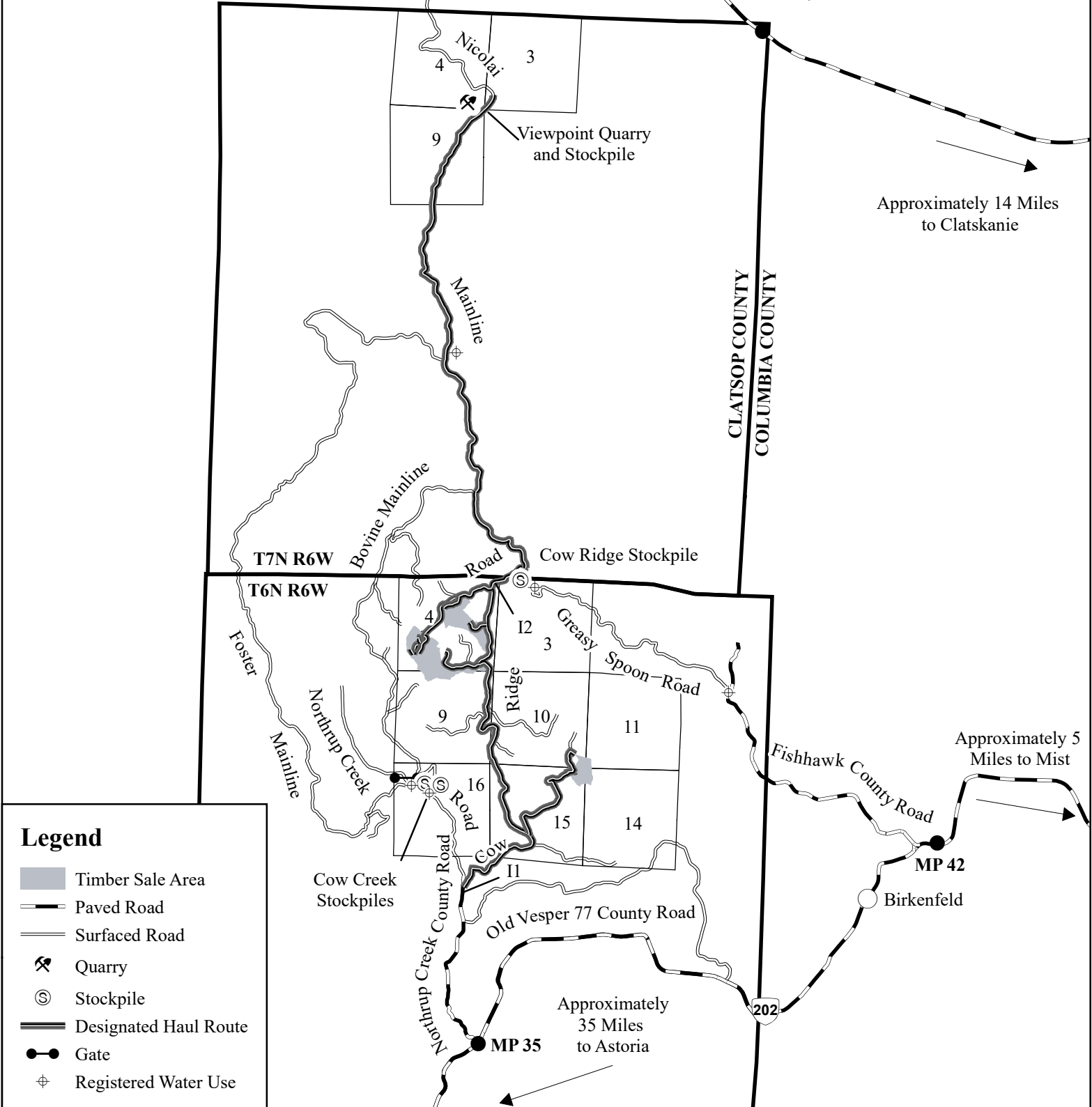


← Approximately 21 Miles
to Astoria

→ Approximately 14 Miles
to Clatskanie

→ Approximately 5
Miles to Mist

← Approximately
35 Miles
to Astoria



Legend







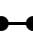

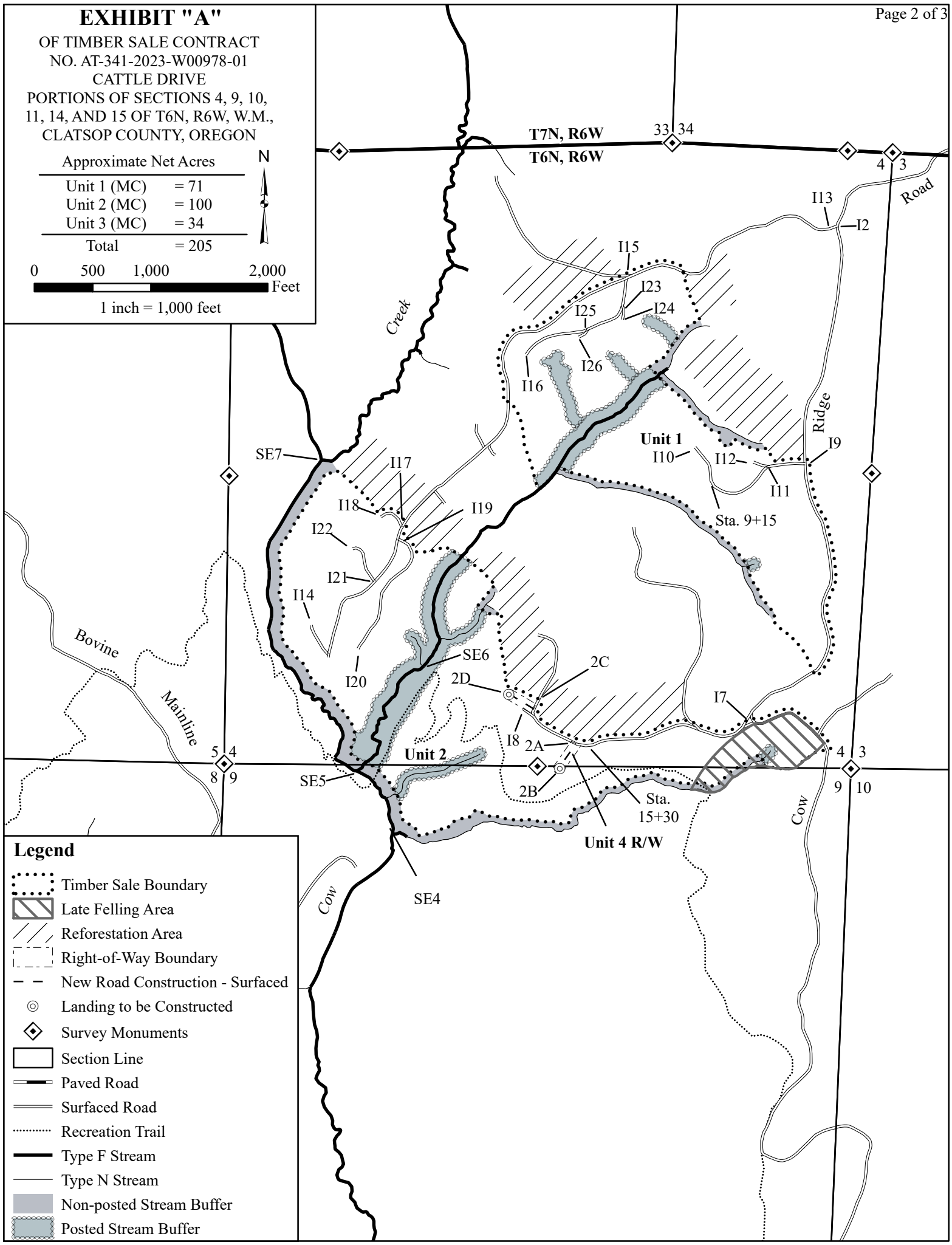
-  Timber Sale Area
-  Paved Road
-  Surfaced Road
-  Quarry
-  Stockpile
-  Designated Haul Route
-  Gate
-  Registered Water Use

EXHIBIT "A"

OF TIMBER SALE CONTRACT
 NO. AT-341-2023-W00978-01
 CATTLE DRIVE
 PORTIONS OF SECTIONS 4, 9, 10,
 11, 14, AND 15 OF T6N, R6W, W.M.,
 CLATSOP COUNTY, OREGON

Approximate Net Acres	
Unit 1 (MC)	= 71
Unit 2 (MC)	= 100
Unit 3 (MC)	= 34
Total	= 205

0 500 1,000 2,000 Feet
 1 inch = 1,000 feet



- Legend**
- Timber Sale Boundary
 - Late Felling Area
 - Reforestation Area
 - Right-of-Way Boundary
 - New Road Construction - Surfaced
 - Landing to be Constructed
 - Survey Monuments
 - Section Line
 - Paved Road
 - Surfaced Road
 - Recreation Trail
 - Type F Stream
 - Type N Stream
 - Non-posted Stream Buffer
 - Posted Stream Buffer

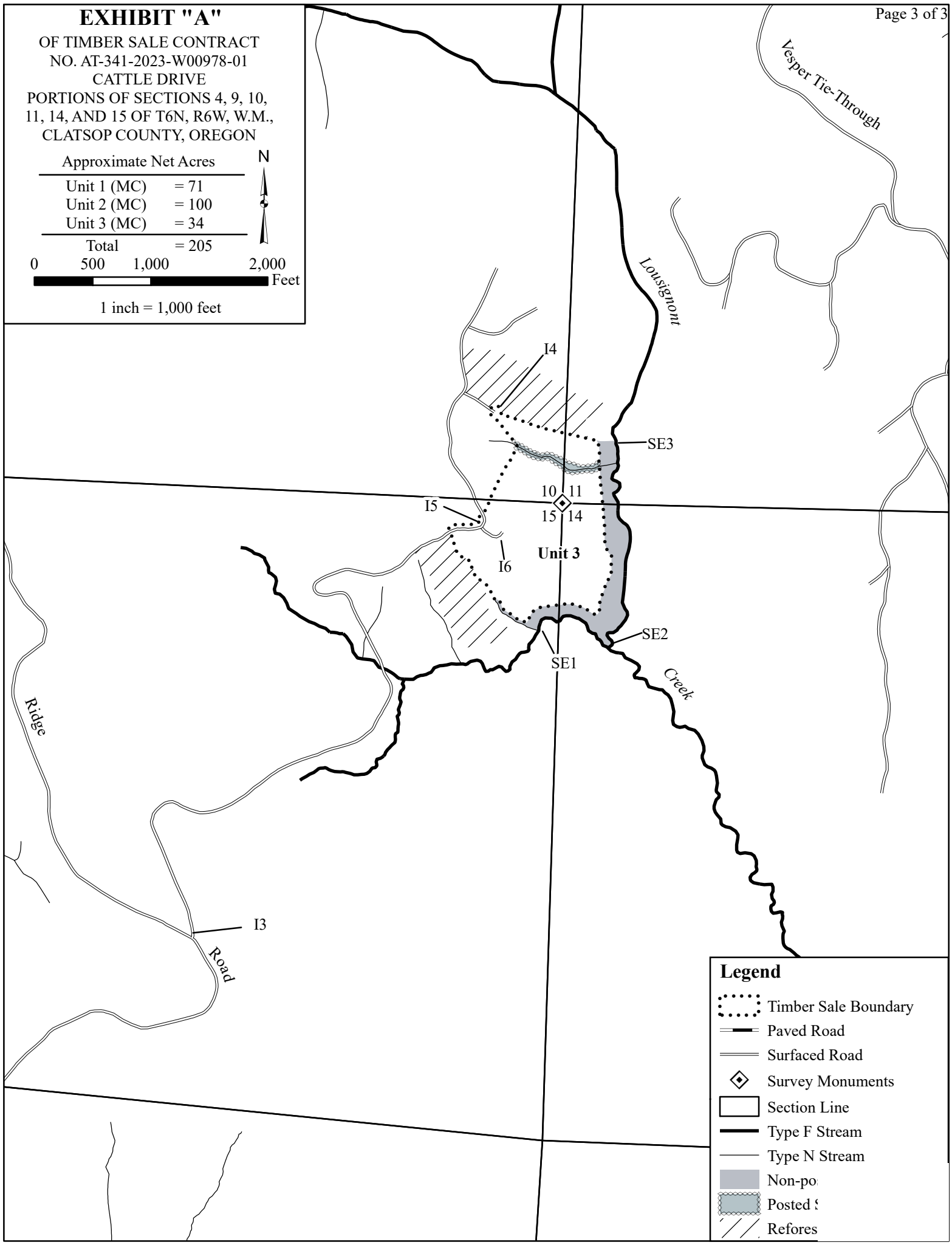
EXHIBIT "A"

OF TIMBER SALE CONTRACT
 NO. AT-341-2023-W00978-01
 CATTLE DRIVE
 PORTIONS OF SECTIONS 4, 9, 10,
 11, 14, AND 15 OF T6N, R6W, W.M.,
 CLATSOP COUNTY, OREGON

Approximate Net Acres	
Unit 1 (MC)	= 71
Unit 2 (MC)	= 100
Unit 3 (MC)	= 34
Total	= 205

0 500 1,000 2,000 Feet

1 inch = 1,000 feet



Legend

- Timber Sale Boundary
- Paved Road
- Surfaced Road
- Survey Monuments
- Section Line
- Type F Stream
- Type N Stream
- Non-po
- Posted
- Refores