

# EXHIBIT "A" VICINITY MAP

Page 1 of 5

OF TIMBER SALE CONTRACT

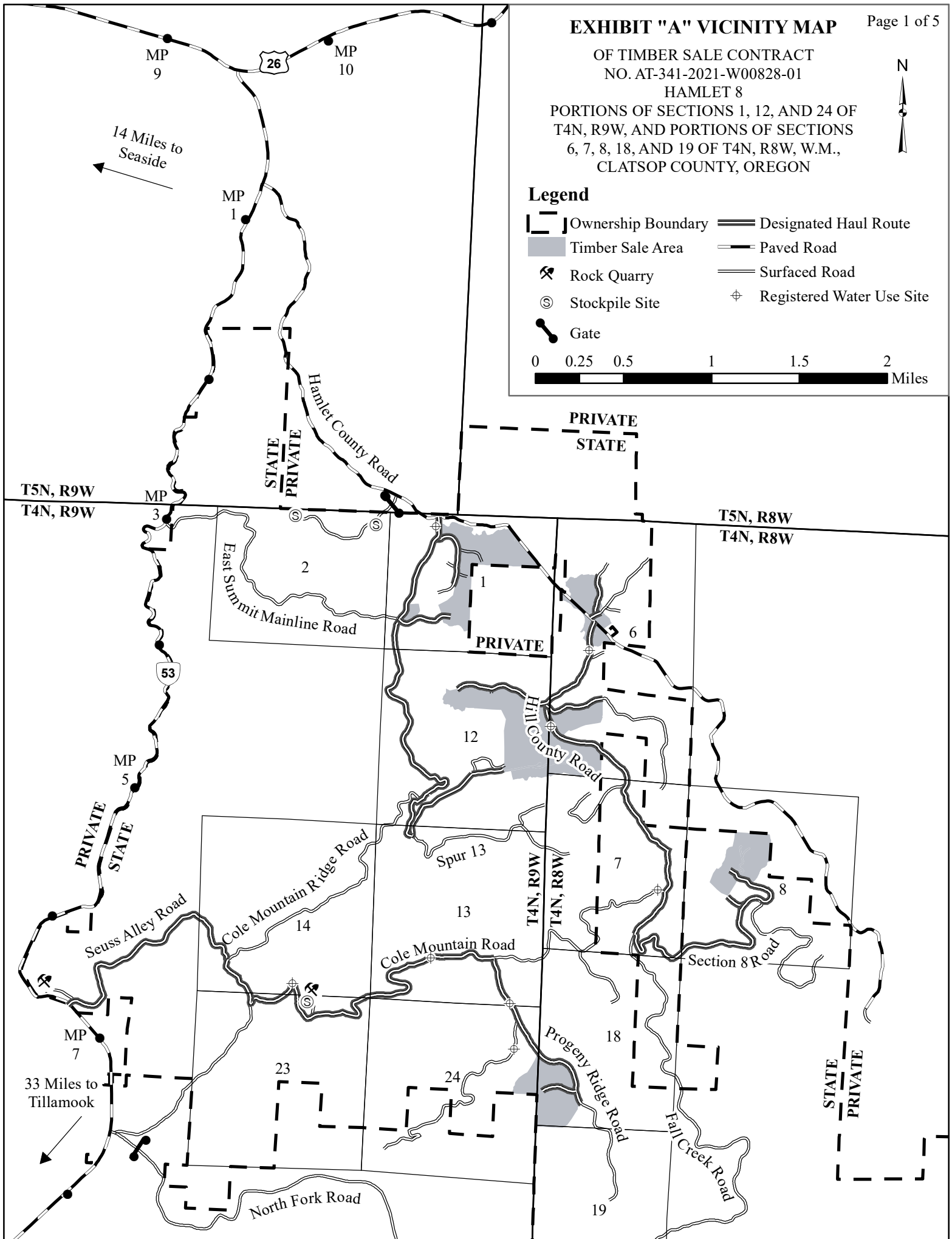
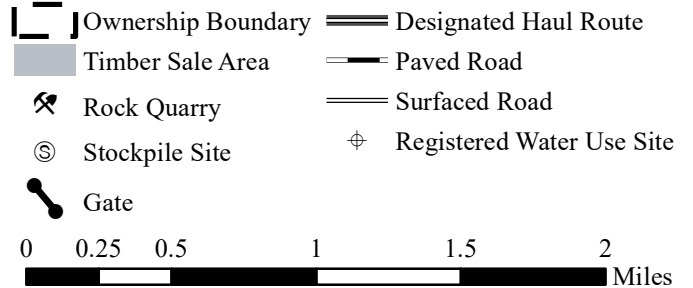
NO. AT-341-2021-W00828-01

HAMLET 8

PORTIONS OF SECTIONS 1, 12, AND 24 OF  
T4N, R9W, AND PORTIONS OF SECTIONS  
6, 7, 8, 18, AND 19 OF T4N, R8W, W.M.,  
CLATSOP COUNTY, OREGON



## Legend



**EXHIBIT "A"**

OF TIMBER SALE CONTRACT

NO. AT-341-2021-W00828-01

HAMLET 8

PORTIONS OF SECTIONS 1, 12, AND 24 OF  
T4N, R9W, AND PORTIONS OF SECTIONS  
6, 7, 8, 18, AND 19 OF T4N, R8W, W.M.,  
CLATSOP COUNTY, OREGON

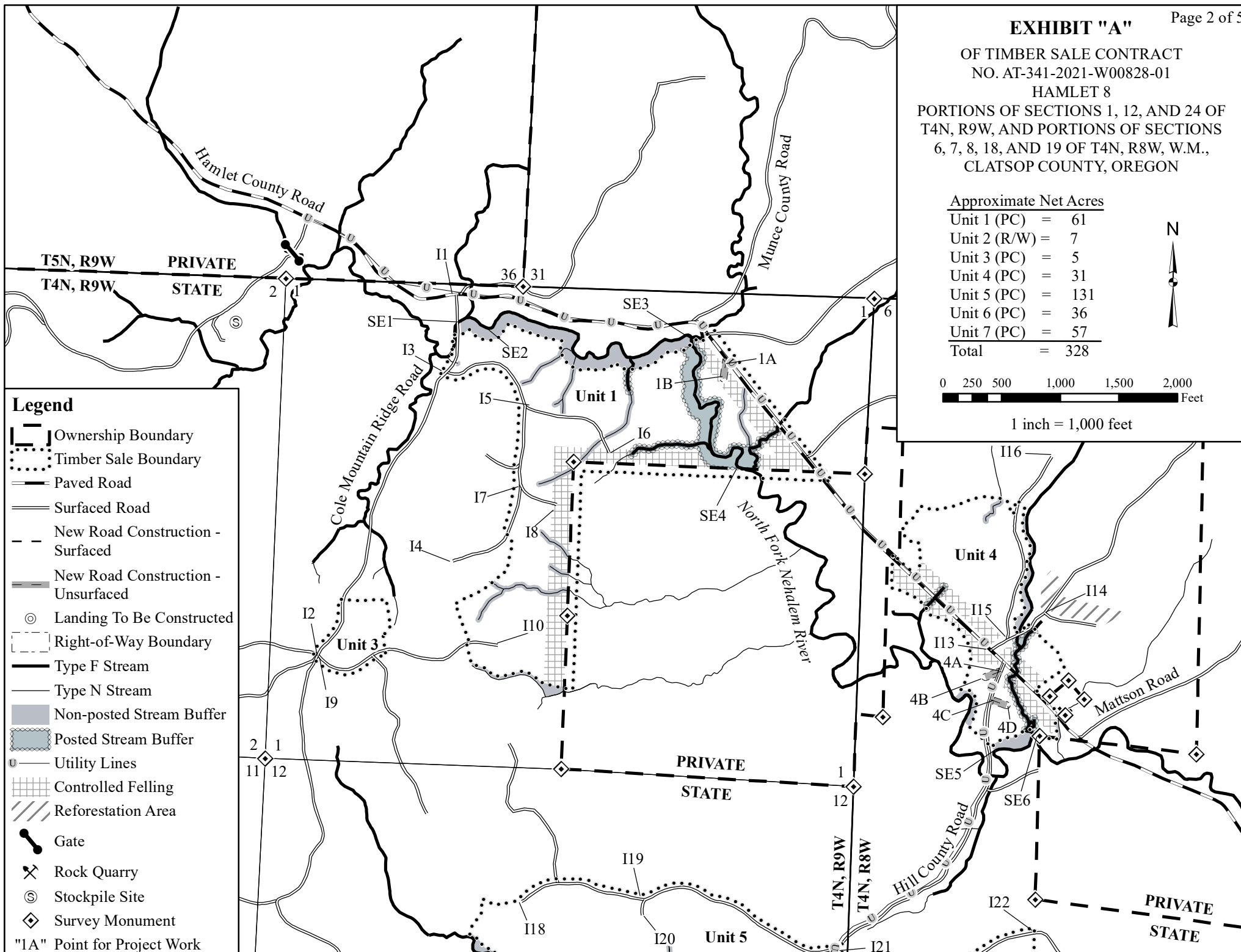
Approximate Net Acres

Unit 1 (PC)	=	61
Unit 2 (R/W)	=	7
Unit 3 (PC)	=	5
Unit 4 (PC)	=	31
Unit 5 (PC)	=	131
Unit 6 (PC)	=	36
Unit 7 (PC)	=	57
Total	=	328



0 250 500 1,000 1,500 2,000  
Feet

1 inch = 1,000 feet



**EXHIBIT "A"**

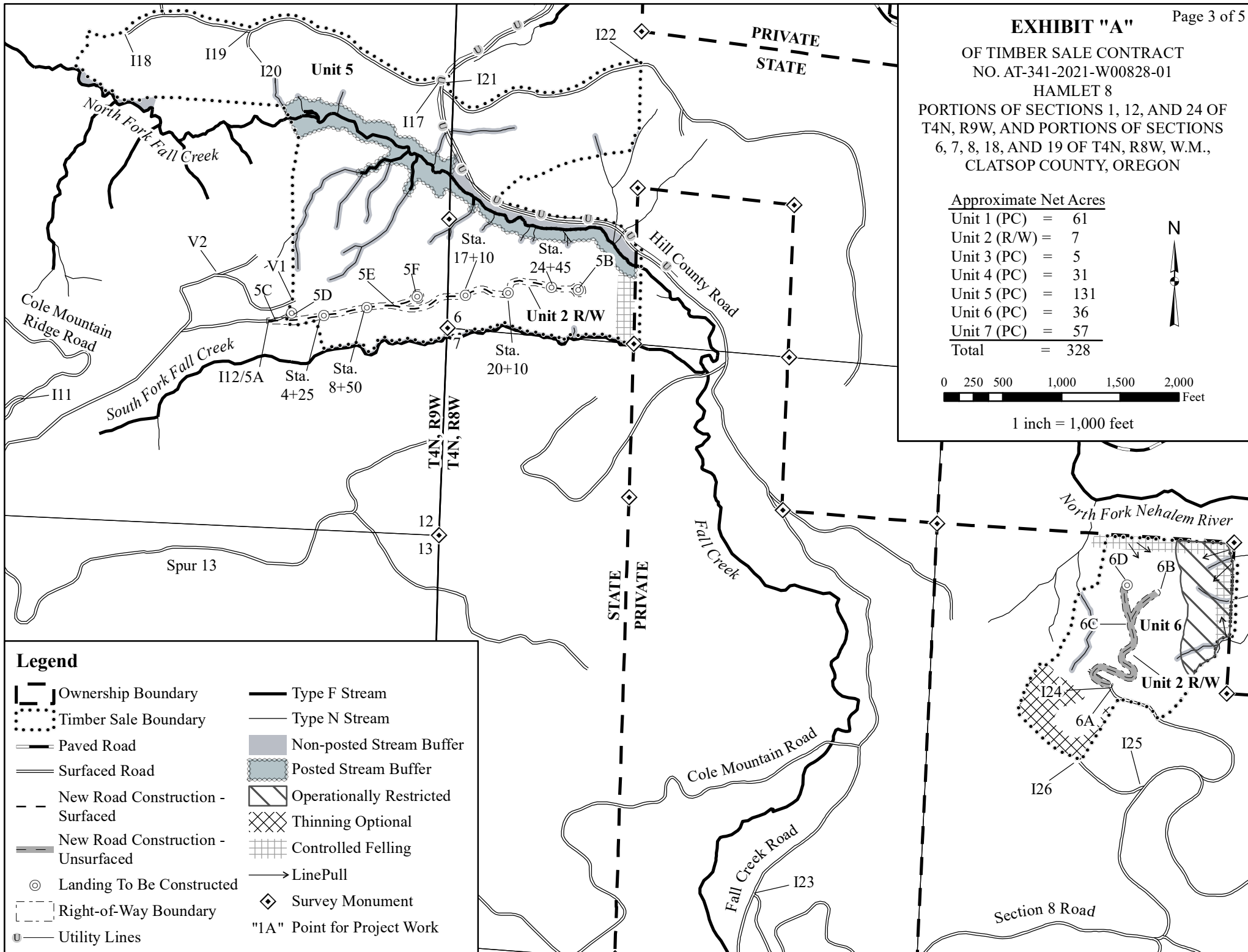
OF TIMBER SALE CONTRACT  
NO. AT-341-2021-W00828-01  
HAMLET 8  
PORTIONS OF SECTIONS 1, 12, AND 24 OF  
T4N, R9W, AND PORTIONS OF SECTIONS  
6, 7, 8, 18, AND 19 OF T4N, R8W, W.M.,  
CLATSOP COUNTY, OREGON

Approximate Net Acres

Unit 1 (PC)	=	61
Unit 2 (R/W)	=	7
Unit 3 (PC)	=	5
Unit 4 (PC)	=	31
Unit 5 (PC)	=	131
Unit 6 (PC)	=	36
Unit 7 (PC)	=	57
<b>Total</b>	<b>=</b>	<b>328</b>

0 250 500 1,000 1,500 2,000  
Feet

1 inch = 1,000 feet



**EXHIBIT "A"**

OF TIMBER SALE CONTRACT

NO. AT-341-2021-W00828-01

HAMLET 8

PORTIONS OF SECTIONS 1, 12, AND 24 OF  
T4N, R9W, AND PORTIONS OF SECTIONS  
6, 7, 8, 18, AND 19 OF T4N, R8W, W.M.,  
CLATSOP COUNTY, OREGON

Approximate Net Acres

Unit 1 (PC)	=	61
Unit 2 (R/W)	=	7
Unit 3 (PC)	=	5
Unit 4 (PC)	=	31
Unit 5 (PC)	=	131
Unit 6 (PC)	=	36
Unit 7 (PC)	=	57
<b>Total</b>	<b>=</b>	<b>328</b>

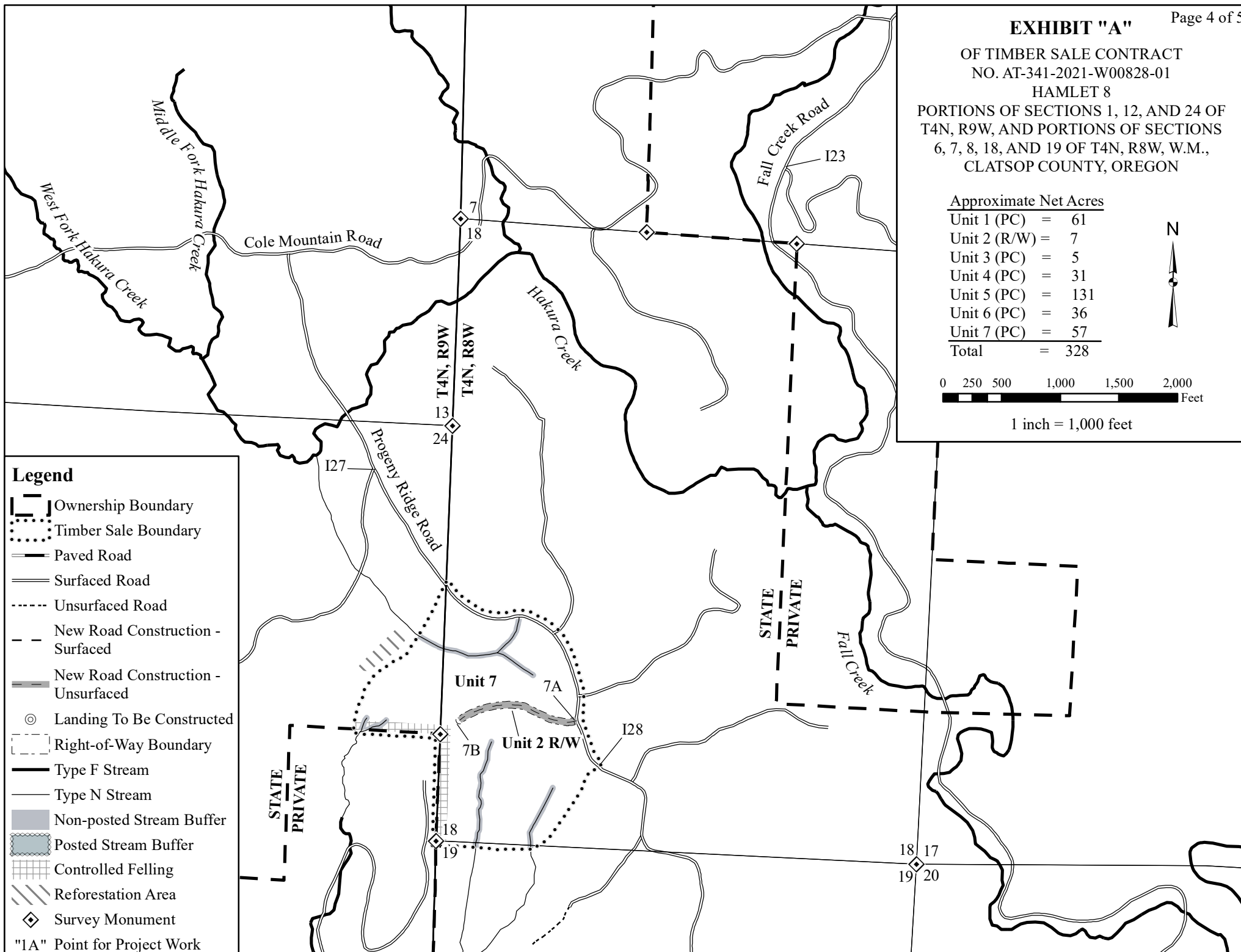


0 250 500 1,000 1,500 2,000  
Feet

1 inch = 1,000 feet

**Legend**

- Ownership Boundary
- Timber Sale Boundary
- Paved Road
- Surfaced Road
- Unsurfaced Road
- New Road Construction - Surfaced
- New Road Construction - Unsurfaced
- Landing To Be Constructed
- Right-of-Way Boundary
- Type F Stream
- Type N Stream
- Non-posted Stream Buffer
- Posted Stream Buffer
- Controlled Felling
- Reforestation Area
- Survey Monument
- "1A" Point for Project Work



# EXHIBIT "A" PROJECT MAP ROAD IMPROVEMENT

OF TIMBER SALE CONTRACT  
NO. AT-341-2021-W00828-01

HAMLET 8

PORTIONS OF SECTIONS 1, 12, AND 24 OF  
T4N, R9W, AND PORTIONS OF SECTIONS  
6, 7, 8, 18, AND 19 OF T4N, R8W, W.M.,  
CLATSOP COUNTY, OREGON

## Legend

Ownership Boundary

Timber Sale Area

Paved Road

Surfaced Road

Rock Quarry

Stockpile Site

Gate

Registered Water Use Site

"1A" Point for Project Work

0 500 1,000 2,000 3,000 4,000  
Feet

1 inch = 2,000 feet

