

# Up&Up Timber Sale

## Appraisal (Chip)

KL-341-2020-W00324-01

**Location**      **Gilchrist State Forest**

Portions of sections 32, T24S R10E

Portions of sections 4, 5, 6, 7, 8, T25S R10E

Willamette Meridian, Klamath County, Oregon



## Volume Harvestable

Total Acres		1641	Ac	
Exclusion	3%	55	Ac	(bypass)
Total Harvest Area	.	1586	Ac	
Optional Entry Area	15%	137	Ac	6 green tons / acre harvestable
General Harvest Area		1449	Ac	10 green tons / acre harvestable

## Value

15,312.00 total green tons

\$2.00 min bid price / green ton

**\$30,639.81** Approximate Value

The Volume harvestable refers to all material to be felled. PURCHASER may sort the felled product into Sawlog or Chip material. Refer to section 1740 in the contract for prices.

STATE makes no guarantee as to the accuracy or amount harvestable for the terms of this contract.

## Variables

### Harvest Yields

1586 Acres harvestable  
 15% % optional entry area  
 1449 GHA acres (general harvest area)  
 10 GHA green tons / acre  
 14490.0 GHA total green tons  
 137.0 OEA acres (optional entry area)  
 6 OEA green tons / acre  
 822.0 OEA total green tons  
 15312.0 total green tons  
 464 total loads  
 0.29 Loads per acre

### Assumptions

33.0	green tons / load
35.0%	moisture
21.5	bdt / load

## Costs

### Trucking Costs

\$750.00	haul cost / load
\$22.73	haul cost / green ton

### Processing Costs

\$250.00	Chipper / hour
\$100.00	Skid / hour
1.20	hours / load
\$420.00	cost / load
\$12.73	cost / green Ton

### Total Costs per Green Ton

\$31.07	Cutting
\$12.73	Processing
\$22.73	Trucking
\$0.33	Obligations
\$66.85	Total

### Profit / Risk per Green Ton

15%	Profit / Risk
\$10.03	Profit & Risk / green ton

### Cutting Costs

\$150.00	Buncher Cost per hour
15312.00	Total Green Tons
9.65	Green Tons / acre
0.29	Loads / acre
5.00	acre cut / day (assume 10 hr day)
\$300.00	cost / acre
\$1,025.43	cost / load
\$31.07	Cost / green ton

### Project Work (non-credit)

\$2,250.00	*Road Maintenance (sections 2130 and 2360)
\$2,250.00	*Pile Construction (sections 2550 and 2560)
\$500.00	*Road closures (section 2360)
\$5,000.00	total
\$0.33	cost / green ton

\*Project Work (non-credit) costs are approximate. The actual cost will depend on operation conditions AND operative damages as determined by STATE.

## Payment

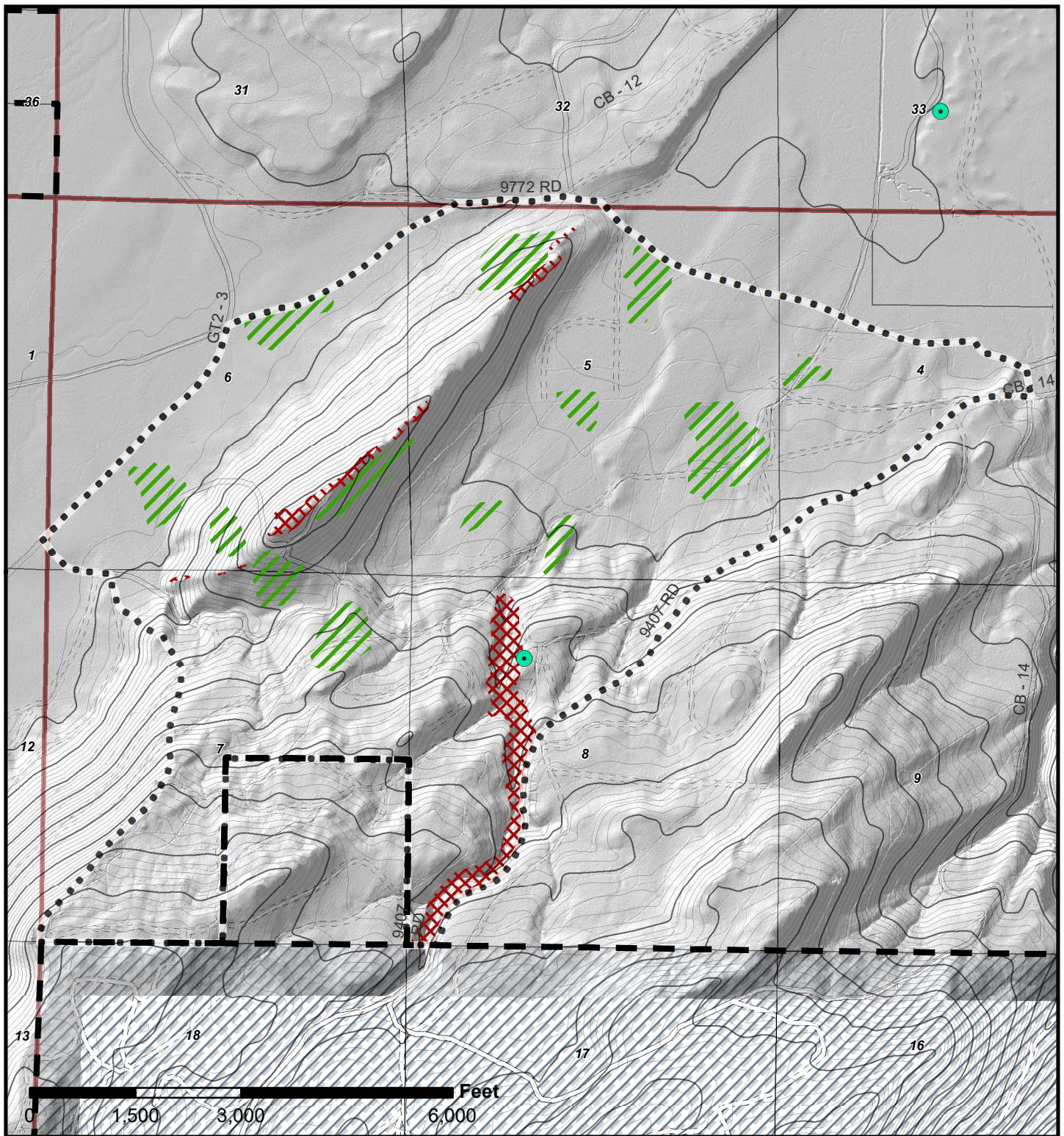
### Payment

\$121.36	payment per / ton
35.0%	moisture
\$78.88	payment / green ton
\$2,603.17	payment / load

### Pricing

\$78.88	payment / green ton
\$66.85	costs / green ton
\$10.03	Profit & Risk / green ton
\$2.00	minimum bid





# Contuour Map

Up And Up TIMBER SALE

KL-341-2020-W00324-01

Portions of Sections 4, 5, 6, 7, 8

T25S, R10E

W.M., Klamath County, Oregon

**1641 Gross Acres**

**1449 Net Acres**

137 Acres of Optional Entry  
55 Acres of Slope Exclusion



1:24,000

