

# Off the Edge Timber Sale

## Appraisal (Chip)

KL-341-2020-W00323-01

**Location**      **Gilchrist State Forest**

Portions of sections 33, 34, T24S, R9E

Portions of sections 3, 4, T25S, R9E

Willamette Meridian, Klamath County, Oregon



## Volume Harvestable

Total Acres		982	Ac	
Exclusion	8%	79	Ac	(bypass)
Total Harvest Area	.	903	Ac	
Optional Entry Area	15%	37	Ac	6 green tons / acre harvestable
General Harvest Area		866	Ac	8 green tons / acre harvestable

### Value

7,150.00 total green tons

\$1.00 min bid price / green ton

**\$7,150.00** Approximate Value

The Volume harvestable refers to all material to be felled. PURCHASER may sort the felled product into Sawlog and Chip material. The price shall be the same for all material harvested. Refer to Exhibit C for details (Sawmill and Pulp). Refer to section 1740 in the contract for log prices.

STATE makes no guarantee as to the accuracy or amount harvestable for the terms of this contract.

## Variables

### Harvest Yields

903 Acres harvestable  
 15% % optional entry area  
 866 GHA acres (general harvest area)  
 8 GHA green tons / acre  
 6928.0 GHA total green tons  
 37.0 OEA acres (optional entry area)  
 6 OEA green tons / acre  
 222.0 OEA total green tons  
 7150.0 total green tons  
 217 total loads  
 0.24 Loads per acre

### Assumptions

33.0	green tons / load
35.0%	moisture
21.5	bdt / load

## Costs

### Trucking Costs

\$750.00	haul cost / load
\$22.73	haul cost / green ton

### Processing Costs

\$250.00	Chipper / hour
\$100.00	Skid / hour
1.20	hours / load
\$420.00	cost / load
\$12.73	cost / green Ton

### Total Costs per Green Ton

\$37.89	Cutting
\$12.73	Processing
\$22.73	Trucking
\$0.70	Obligations
\$74.04	Total

### Profit / Risk per Green Ton

15%	Profit / Risk
\$11.11	Profit & Risk / green ton

### Cutting Costs

\$150.00	Buncher Cost per hour
7150.00	Total Green Tons
7.92	Green Tons / acre
0.24	Loads / acre
5.00	acre cut / day (assume 10 hr day)
\$300.00	cost / acre
\$1,250.31	cost / load
\$37.89	Cost / green ton

### Project Work (non-credit)

\$2,250.00	*Road Maintenance (sections 2130 and 2360)
\$2,250.00	*Pile Construction (sections 2550 and 2560)
\$500.00	*Road closures (section 2360)
\$5,000.00	total
\$0.70	cost / green ton

\*Project Work (non-credit) costs are approximate. The actual cost will depend on operation conditions AND operative damages as determined by STATE.

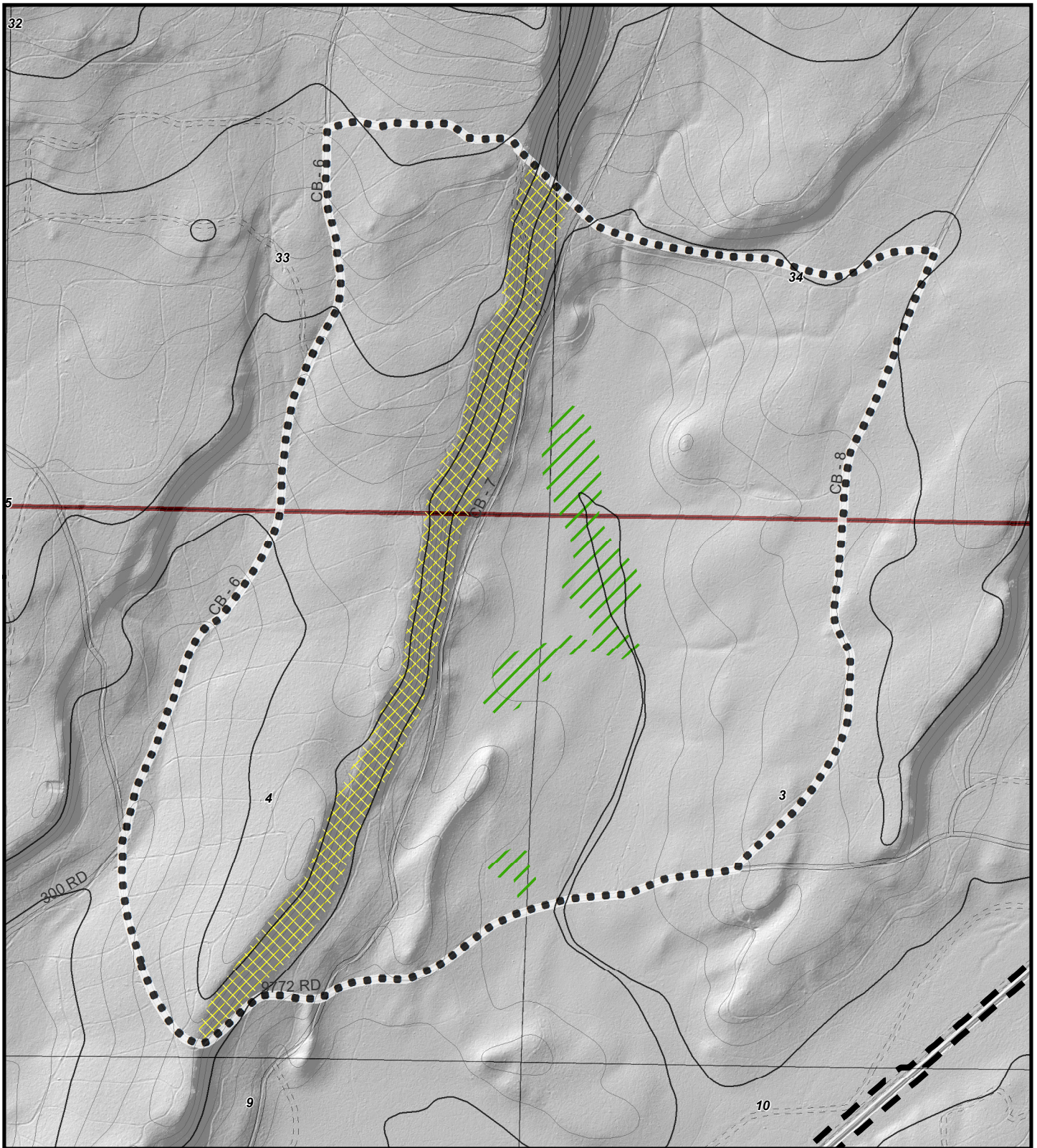
## Payment

### Payment

\$132.54	payment per / ton
35.0%	moisture
\$86.15	payment / green ton
\$2,842.98	payment / load

### Pricing

\$86.15	payment / green ton
\$74.04	costs / green ton
\$11.11	Profit & Risk / green ton
\$1.00	minimum bid



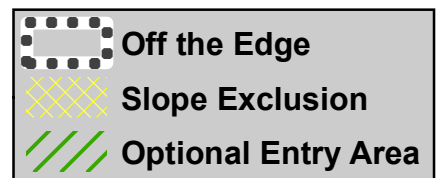
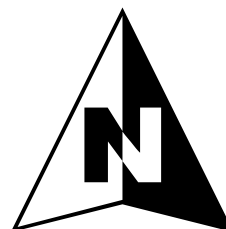
## Contour Map

**OFF THE EDGE TIMBER SALE**  
**KL-341-2020-W00323-01**

Portions of Sections 33 and 34, T24S, R9E  
Portions of Sections 3 and 4, T25S R9E  
W.M., Klamath County, Oregon

**982 Acres**

79 Acres of Slope Exclusion  
37 Acres of Optional Entry



1:16,000

