

Shipwreck Timber Sale

Appraisal (Chip)

KL-341-2020-W00321-01

Location **Gilchrist State Forest**

Portions of sections 15, 16, 21, 22, 27, 28

T24S, R9E

Willamette Meridian, Klamath County, Oregon



Volume Harvestable

Total Acres		855	Ac	
Exclusion	0%	0	Ac	(bypass)
Total Harvest Area	.	855	Ac	
Optional Entry Area	15%	29	Ac	6 green tons / acre harvestable
General Harvest Area		826	Ac	8 green tons / acre harvestable

Value

6,782.00 total green tons

\$1.00 min bid price / green ton

\$6,810.03 Approximate Value

The Volume harvestable refers to all material to be felled. PURCHASER may sort the felled product into Sawlog and Chip material. The price shall be the same for all material harvested. Refer to Exhibit C for details (Sawmill and Pulp). Refer to section 1740 in the contract for log prices.

STATE makes no guarantee as to the accuracy or amount harvestable for the terms of this contract.

Variables

Harvest Yields

855 Acres harvestable
 15% % optional entry area
 826 GHA acres (general harvest area)
 8 GHA green tons / acre
 6608.0 GHA total green tons
 29.0 OEA acres (optional entry area)
 6 OEA green tons / acre
 174.0 OEA total green tons
 6782.0 total green tons
 206 total loads
 0.24 Loads per acre

Assumptions

33.0	green tons / load
35.0%	moisture
21.5	bdt / load

Costs

Trucking Costs

\$750.00	haul cost / load
\$22.73	haul cost / green ton

Processing Costs

\$250.00	Chipper / hour
\$100.00	Skid / hour
1.20	hours / load
\$420.00	cost / load
\$12.73	cost / green Ton

Total Costs per Green Ton

\$37.82	Cutting
\$12.73	Processing
\$22.73	Trucking
\$0.74	Obligations
\$74.01	Total

Profit / Risk per Green Ton

15%	Profit / Risk
\$11.10	Profit & Risk / green ton

Cutting Costs

\$150.00	Buncher Cost per hour
6782.00	Total Green Tons
7.93	Green Tons / acre
0.24	Loads / acre
5.00	acre cut / day (assume 10 hr day)
\$300.00	cost / acre
\$1,248.08	cost / load
\$37.82	Cost / green ton

Project Work (non-credit)

\$2,250.00	*Road Maintenance (sections 2130 and 2360)
\$2,250.00	*Pile Construction (sections 2550 and 2560)
\$500.00	*Road closures (section 2360)
\$5,000.00	total
\$0.74	cost / green ton

*Project Work (non-credit) costs are approximate. The actual cost will depend on operation conditions AND operative damages as determined by STATE.

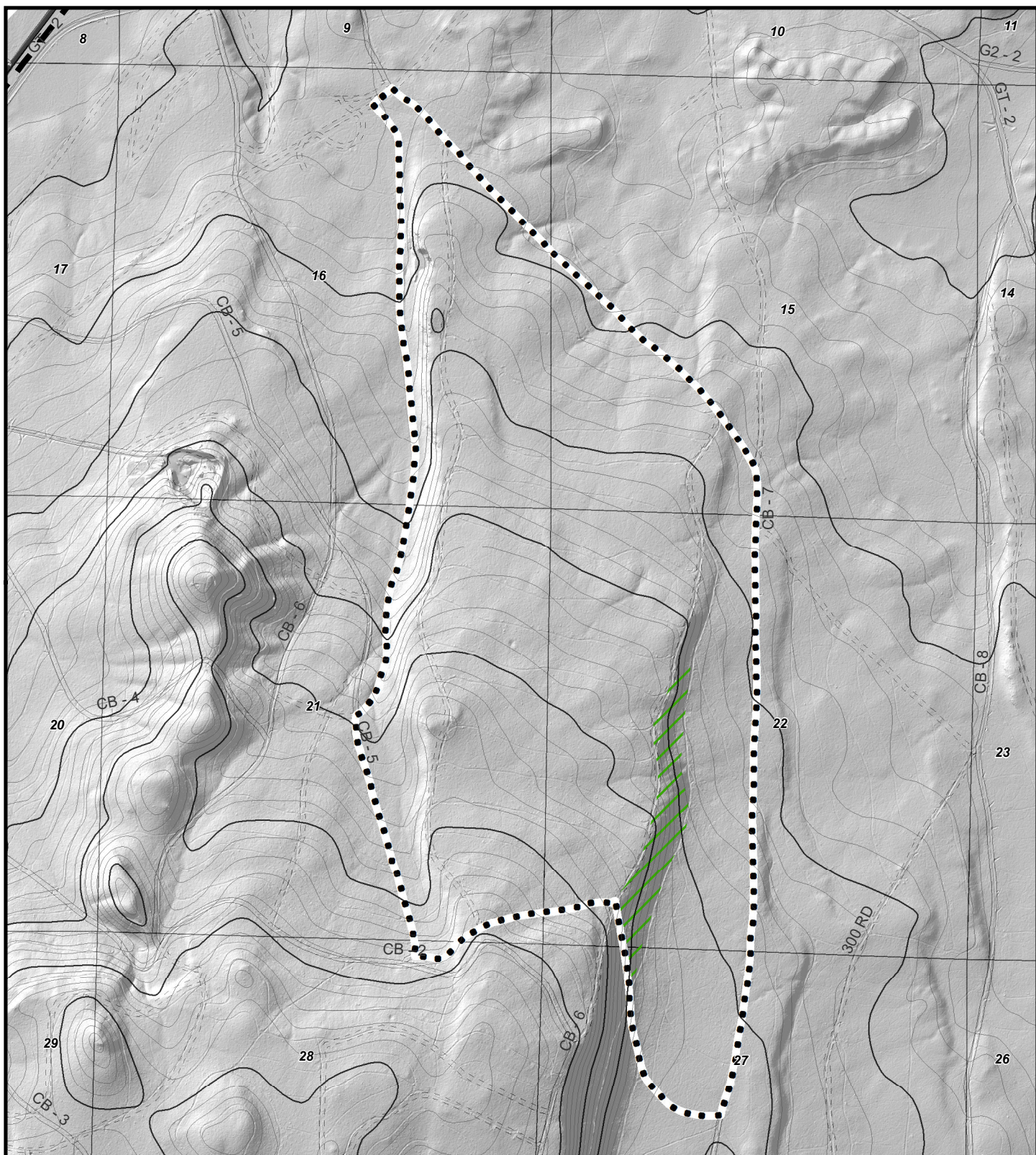
Payment

Payment

\$132.49	payment per / ton
35.0%	moisture
\$86.12	payment / green ton
\$2,841.91	payment / load

Pricing

\$86.12	payment / green ton
\$74.01	costs / green ton
\$11.10	Profit & Risk / green ton
\$1.00	minimum bid



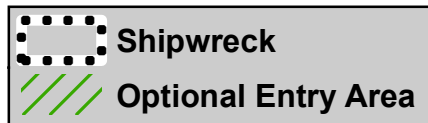
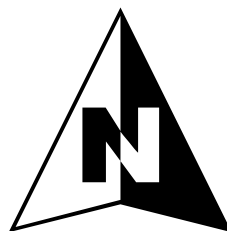
Contour Map

SHIPWRECK TIMBER SALE
KL-341-2020-W00321-01

Portions of Sections 15,16, 21, 22, 27, 28
T24S, R9E
W.M., Klamath County, Oregon

855 Acres

29 Acres of Optional Entry



1:20,000

