

EXHIBIT "A"

Of Timber Sale Contract
 KL-341-2019-GF8017-01
 Fir Lo
 Section(s) 7, 18, 19, T35S,
 R8E, Section(s) 12, 13, T35S,
 R7E, Willamette Meridian,
 Klamath County, Oregon
543 gross acres
492 net acres

"STEWARDSHIP IN FORESTRY"

	Fir Lo Timber Sale		Paved Road
	Exclusions		All weather
	Project Points		Dirt Road
	Electric Transmission Lines		Road Improvement
	Road Construction		

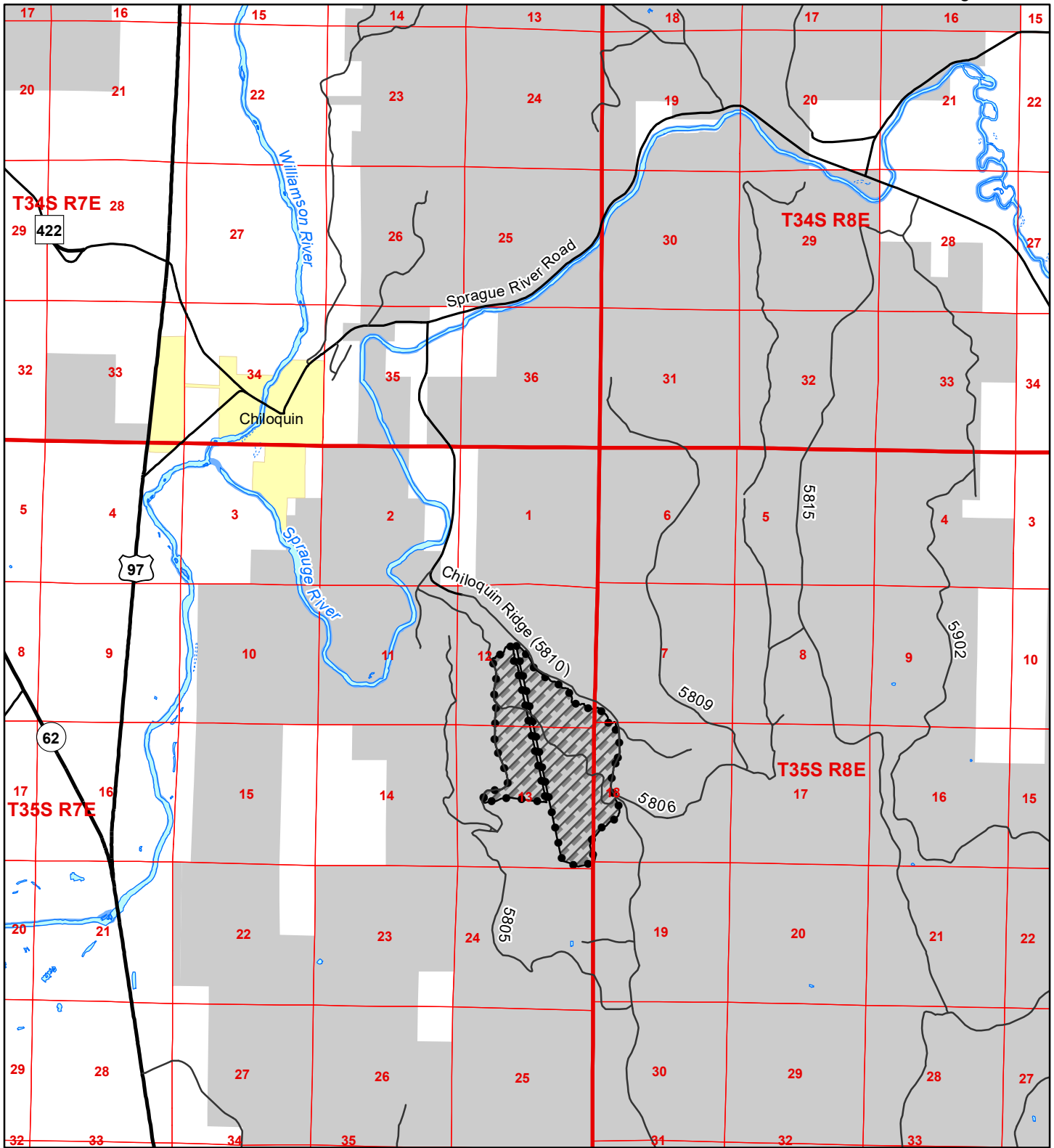


EXHIBIT "A" VICINITY MAP

Of Timber Sale Contract
KL-341-2019-GF8017-01

Fir Lo

Section(s) 7, 18, 19, T35S,
R8E, Section(s) 12, 13, T35S,
R7E, Willamette Meridian,
Klamath County, Oregon

	Fir Lo Timber Sale
	US Forest Service



"STEWARDSHIP IN FORESTRY"