



"STEWARDSHIP IN FORESTRY"

Timber Sale Appraisal
Little Elk Thin
Sale WO-341-2019-W00775-01

District: West Oregon

Date: April 10, 2019

Cost Summary

	Conifer	Hardwood	Total
Gross Timber Sale Value	\$238,548.48	\$0.00	\$238,548.48
		Project Work:	(\$60,695.00)
		Advertised Value:	\$177,853.48



Timber Sale Appraisal Little Elk Thin Sale WO-341-2019-W00775-01

District: West Oregon

Date: April 10, 2019

Timber Description

Location: Portions of Sections 13 and 23, T11S, R9W, W.M., Lincoln County Oregon.

Stand Stocking: 40%

Specie Name	AvgDBH	Amortization (%)	Recovery (%)
Douglas - Fir	12	0	96

Volume by Grade	2S	3S & 4S 6"-11"	Total
Douglas - Fir	21	1,026	1,047
Total	21	1,026	1,047

Comments: Pond Values Used: Local Pond Values, October, 2018

Western Hemlock and Other Conifers Stumpage Price = Pond Value minus Logging Cost:
\$100/MBF = \$530/MBF - \$430/MBF

Red Alder Stumpage Price = Pond Value minus Logging Cost:
\$170/MBF = \$600.00/MBF - \$430/MBF

Western redcedar and Other Cedars Stumpage Price = Pond Value minus Logging Cost, minus additional haul cost:
\$440/MBF = \$900/MBF - \$460/MBF

PULP (Conifer and Hardwood Price) = \$2.50/TON

Other Costs (with Profit & Risk to be added):
Intermediate Support/Tail Trees: 12 supports @ \$100/support = \$1,200.

TOTAL Other Costs (with Profit & Risk to be added) = \$1,200

Other Costs (No Profit & Risk added):
Equipment Cleaning (Invasive Species): \$2,000
Water Bar and Block Dirt Roads: 50 stations @ \$15.96/station = \$798
Landing Slash Piling and sorting out firewood: 16 Landings @ \$180/Landing = \$2,880
TOTAL Other Costs (No Profit & Risk added) = \$5,678

ROAD MAINTENANCE
Move-in: (Grader) \$778
Final Road Maintenance: \$7,314
TOTAL Road Maintenance: \$8,092/1,047MBF = \$7.73/MBF



Timber Sale Appraisal
Little Elk Thin
Sale WO-341-2019-W00775-01

District: West Oregon

Date: April 10, 2019

Logging Conditions

Combination#:	1	Douglas - Fir	65.00%
Logging System:	Cable: Small Tower <=40		Process: Stroke Delimber
yarding distance:	Medium (800 ft)		downhill yarding: No
tree size:	Small / Thinning 12in (130 Bft/tree), 12-17 logs/MBF		
loads / day:	4.5		bd. ft / load: 3700
cost / mbf:	\$336.34		
machines:	Log Loader (A) Stroke Delimber (A) Tower Yarder (Small)		
Combination#:	2	Douglas - Fir	35.00%
Logging System:	Cut To Length		Process: Harvester Head Delimbing
yarding distance:	Short (400 ft)		downhill yarding: No
tree size:	Small / Thinning 12in (130 Bft/tree), 12-17 logs/MBF		
loads / day:	10		bd. ft / load: 3700
cost / mbf:	\$151.23		
machines:	Harvester Forwarder		



"STEWARDSHIP IN FORESTRY"

Timber Sale Appraisal
Little Elk Thin
Sale WO-341-2019-W00775-01

District: West Oregon

Date: April 10, 2019

Logging Costs

Operating Seasons: 3.00	Profit Risk: 12%
Project Costs: \$60,695.00	Other Costs (P/R): \$1,200.00
Slash Disposal: \$0.00	Other Costs: \$5,678.00

Miles of Road

Road Maintenance: \$7.73

Dirt	Rock (Contractor)	Rock (State)	Paved
0.0	0.0	0.0	0.0

Hauling Costs

Species	\$ / MBF	Trips/Day	MBF / Load
Douglas - Fir	\$0.00	3.0	3.9



"STEWARDSHIP IN FORESTRY"

Timber Sale Appraisal
Little Elk Thin
Sale WO-341-2019-W00775-01

District: West Oregon

Date: April 10, 2019

Logging Costs Breakdown

Logging	Road Maint	Fire Protect	Hauling	Other P/R appl	Profit & Risk	Slash Disposal	Brand & Paint	Other	Total
Douglas - Fir									
\$271.55	\$8.04	\$12.58	\$84.45	\$1.15	\$45.33	\$0.00	\$2.00	\$5.42	\$430.52

Specie	Amortization	Pond Value	Stumpage	Amortized
Douglas - Fir	\$0.00	\$658.36	\$227.84	\$0.00



Timber Sale Appraisal
Little Elk Thin
Sale WO-341-2019-W00775-01

District: West Oregon

Date: April 10, 2019

Summary

Amortized

Specie	MBF	Value	Total
Douglas - Fir	0	\$0.00	\$0.00

Unamortized

Specie	MBF	Value	Total
Douglas - Fir	1,047	\$227.84	\$238,548.48

Gross Timber Sale Value

Recovery: \$238,548.48

Prepared By: Jon Long

Phone: 541-929-3266

SUMMARY OF ALL PROJECT COSTS

Sale Name: Little Elk Thin

Date: December 2018

Time: 14:05

Project #1 - New Construction

<u>Road Segment</u>	<u>Length</u>	<u>Cost</u>	
A to B (dirt)	3.8 sta	\$2,010	
C to D (surfaced/dirt)	15.0 sta	\$9,819	
E to F (surfaced)	5.2 sta	\$3,845	
G to H (surfaced)	3.0 sta	\$2,469	
I to J (dirt)	6.5 sta	\$2,927	
K to L (dirt)	5.1 sta	\$2,039	
TOTALS	38.6 sta	0.7 Miles	\$23,109

Project #2 - Road Improvement

<u>Road Segment</u>	<u>Length</u>	<u>Cost</u>	
1 to 2 (Miller Creek Rd.)	51.8 sta	\$4,913	
3 to 4	2.0 sta	\$1,177	
5 to 6	2.1 sta	\$1,182	
7 to 8 (Baber Ridge Rd.)	98.6 sta	\$5,788	
8 to 9	23.2 sta	\$7,046	
10 to G	4.1 sta	\$387	
11 to 12 (Salmon Forks Rd.)	58.1 sta	\$4,014	
13 to 14	7.3 sta	\$931	
15 to K (dirt)	17.9 sta	\$276	
TOTALS	265.1 sta	5.0 Miles	\$25,714

<u>Project #3 - Brushing</u>	5.4 Miles	\$6,344
-------------------------------------	-----------	---------

Project #4 - Move in

	<u>Cost</u>	
Road brusher	\$778	
Excavator, C325 or equiv.	\$1,290	
Dozer, D-7 or equiv.	\$805	
Grader, G14 or equiv.	\$778	
Backhoe	\$321	
Front end loader	\$778	
Vibratory roller	\$778	
TOTAL		\$5,528

GRAND TOTAL **\$60,695**

Compiled by J. Long

Date 12/06/2018

SUMMARY OF CONSTRUCTION COST

SALE	Little Elk Thin	Project #	1(b)	LENGTH	improve	3.8 sta
ROAD	A to B (dirt)		Unsurfaced, outsloped			

CLEARING AND GRUBBING

0.3 acres	@	\$1,337.00 /acre	=	\$401
-----------	---	------------------	---	-------

TOTAL CLEARING AND GRUBBING =	\$401
-------------------------------	-------

EXCAVATION

With D7 dozer or equivalent

Construct road	3.8 sta	@	\$190.00 /sta	=	\$722
Landing Construction	2 Ldg	@	\$389.00 /Ldg	=	\$778
Shape/outslope subgrade (with road grader)	3.8 sta	@	\$ 15.40 /sta	=	\$59
Compact subgrade (with vibratory roller)	3.8 sta	@	\$ 13.20 /sta	=	\$50

TOTAL EXCAVATION =	\$1,609
--------------------	---------

Compiled by:

J.Long

Date:

Dec 6, 2018

GRAND TOTAL =====>

\$2,010

SUMMARY OF CONSTRUCTION COST

SALE Little Elk Thin Project # 1(a) LENGTH improve 15.0 sta
ROAD C to D (surfaced/dirt)

CLEARING AND GRUBBING

1.0 acres @ \$1,337.00 /acre = \$1,337

TOTAL CLEARING AND GRUBBING = \$1,337

EXCAVATION

With D7 dozer or equivalent

Construct road	15.0 sta	@	\$122.00 /sta	=	\$1,830
Landing Construction	2 Ldgs	@	\$389.00 /Ldg	=	\$778
Shape subgrade (with road grader)	15.0 sta	@	\$ 15.40 /sta	=	\$231
Compact subgrade (with vibratory roller)	15.0 sta	@	\$ 13.20 /sta	=	\$198

TOTAL EXCAVATION = \$3,037

SURFACING

			Size	Cost/yd		
Junction rock	20 cy of		jaw-run	\$21.68	=	\$434
Junction rock	10 cy of		1 1/2" - 0"	\$2.69	=	\$27
Turnaround rock (sta. 3+00)	20 cy of		jaw-run	\$21.68	=	\$434
Base rock (3.8 Stations)	163 cy of		jaw-run	\$21.68	=	\$3,534
Landing rock (sta. 3+80)	40 cy of		jaw-run	\$21.68	=	\$867
Spread/compact rock (with dozer)	1.0 hr.	@	\$149.00 /hr	=	\$149	

TOTAL ROCK COST = \$5,445

Compiled by:
Date:

J. Long
Dec 6, 2018

GRAND TOTAL =====>

\$9,819

SUMMARY OF CONSTRUCTION COST

SALE	Little Elk Thin	Project #	1(a)	LENGTH	improve	5.2 sta
ROAD	E to F (surfaced)		surfaced, outsloped			

CLEARING AND GRUBBING

0.4 acres	@	\$1,337.00 /acre	=	\$535
-----------	---	------------------	---	-------

TOTAL CLEARING AND GRUBBING = \$535

EXCAVATION

With D7 dozer or equivalent

Construct road	5.2 sta	@	\$190.00 /sta	=	\$988
Landing Construction	1 Ldg	@	\$389.00 /Ldg	=	\$389
Shape/outslope subgrade (with road grader)	5.2 sta	@	\$ 15.40 /sta	=	\$80
Compact subgrade (with vibratory roller)	5.2 sta	@	\$ 13.20 /sta	=	\$69

TOTAL EXCAVATION = \$1,526

SURFACING

			Size	Cost/yd		
Base rock (5.2 Stations)	224	cy of	3"-0"	\$5.37	=	\$1,203
Turnout	20	cy of	3"-0"	\$5.37	=	\$107
Turnaround	20	cy of	3"-0"	\$5.37	=	\$107
Landing rock (Pt. F)	40	cy of	3"-0"	\$5.37	=	\$215
Spread/compact rock (with vibratory roller)	5.2 sta	@	\$ 29.20 /sta	=	\$152	

TOTAL ROCK COST = \$1,784

Compiled by:	J.Long
Date:	Dec 6, 2018

GRAND TOTAL =====> \$3,845

SUMMARY OF CONSTRUCTION COST

SALE	Little Elk Thin	Project #	1(a)	LENGTH	improve	3.0 sta
ROAD	G to H (surfaced)		surfaced, outsloped			

CLEARING AND GRUBBING

0.2 acres	@	\$1,337.00 /acre	=	\$267
-----------	---	------------------	---	-------

TOTAL CLEARING AND GRUBBING = \$267

EXCAVATION

With D7 dozer or equivalent

Construct road	3.0 sta	@	\$190.00 /sta	=	\$570
Landing Construction	1 Ldgs	@	\$389.00 /Ldg	=	\$389
Shape subgrade (with road grader)	3.0 sta	@	\$ 15.40 /sta	=	\$46
Compact subgrade (with vibratory roller)	3.0 sta	@	\$ 13.20 /sta	=	\$40

TOTAL EXCAVATION = \$1,045

SURFACING

			Size	Cost/yd		
Base rock (5.2 Stations)	129 cy of		3"-0"	\$5.37	=	\$693
Turnout/Turnaround	30 cy of		3"-0"	\$5.37	=	\$161
Landing rock (Pt. G)	40 cy of		3"-0"	\$5.37	=	\$215
Spread/compact rock (with vibratory roller)	3.0 sta	@	\$ 29.20 /sta	=	\$88	

TOTAL ROCK COST = \$1,157

Compiled by:
Date:

J. Long
Dec 6, 2018

GRAND TOTAL =====>

\$2,469

SUMMARY OF CONSTRUCTION COST

SALE	Little Elk Thin	Project #	1(b)	LENGTH	improve	6.5 sta
ROAD	I to J (dirt)		Unsurfaced, outsloped			

CLEARING AND GRUBBING

0.5 acres	@	\$1,337.00 /acre	=	\$669
-----------	---	------------------	---	-------

TOTAL CLEARING AND GRUBBING =	\$669
-------------------------------	-------

EXCAVATION

With D7 dozer or equivalent

Construct road	6.5 sta	@	\$190.00 /sta	=	\$1,235
Import fill material	80 cy.	@	\$5.00 /cy.	=	\$400
(Sta. 0+00 to 1+00)					
Fill compaction	80 cy.	@	\$0.60 /cy.	=	\$48
Landing construction	1 Ldg	@	\$389.00 /Ldg	=	\$389
Shape/outslope subgrade	6.5 sta	@	\$ 15.40 /sta	=	\$100
(with road grader)					
Compact subgrade	6.5 sta	@	\$ 13.20 /sta	=	\$86
(with vibratory roller)					

TOTAL EXCAVATION =	\$2,258
--------------------	---------

Compiled by:
Date:

J.Long
Dec 6, 2018

GRAND TOTAL =====>	\$2,927
--------------------	---------

SUMMARY OF CONSTRUCTION COST

SALE	Little Elk Thin	Project #	1(b)	LENGTH	improve	5.1 sta
ROAD	K to L (dirt)		Unsurfaced, outsloped			

CLEARING AND GRUBBING

0.4 acres	@	\$1,337.00 /acre	=	\$535
-----------	---	------------------	---	-------

TOTAL CLEARING AND GRUBBING =	\$535
-------------------------------	-------

EXCAVATION

With D7 dozer or equivalent

Construct road	5.1 sta	@	\$190.00 /sta	=	\$969
Landing Construction	1 Ldg	@	\$389.00 /Ldg	=	\$389
Shape/outslope subgrade (with road grader)	5.1 sta	@	\$ 15.40 /sta	=	\$79
Compact subgrade (with vibratory roller)	5.1 sta	@	\$ 13.20 /sta	=	\$67

TOTAL EXCAVATION =	\$1,504
--------------------	---------

Compiled by:
Date:

J.Long
Dec 6, 2018

GRAND TOTAL =====>	\$2,039
--------------------	---------

SUMMARY OF CONSTRUCTION COST

SALE	Little Elk Thin	Project #	2	LENGTH	improve	51.8 sta
ROAD	1 to 2 (Miller Creek Rd.)			Surfaced, outsloped		

IMPROVEMENT

Remove sod (with road grader)	51.8 sta	@	\$ 15.40 /sta	=	\$798
Slough removal (0+00 to 44+30)	2.0 hr	@	\$140.00 /hr	=	\$280
Haul to sta. 44+30 (W2)	40 cy	@	\$4.00 /cy	=	\$160
Construct Landing (Sta. 44+30)	1 Ldg	@	\$324.00 /Ldg	=	\$324

TOTAL IMPROVEMENT = \$1,562

SURFACING

			Size	Cost/yd		
Turnout rock (3)	30 cy of		1½-0"	\$2.69	=	\$81
Spot rock	250 cy of		1½-0"	\$2.69	=	\$673
Landings (1)	50 cy of		Jaw-Run	\$21.68	=	\$1,084
Grade/process	51.8 sta	@	\$ 16.00 /sta	=	\$829	
Compact surface rock (with vibratory roller)	51.8 sta	@	\$ 13.20 /sta	=	\$684	

TOTAL ROCK COST = \$3,351

Compiled by: J. Long
Date: Dec 6, 2018

GRAND TOTAL =====> \$4,913

SUMMARY OF CONSTRUCTION COST

SALE Little Elk Thin Project # 2 LENGTH improve 2.0 sta
ROAD 3 to 4 Surfaced, outsloped

IMPROVEMENT

Remove sod (with road grader)	2.0 sta	@	\$ 15.40 /sta	=	\$31
Clear Landing (with excavator)	1.0 hr	@	\$140.00 /hr	=	\$140

TOTAL IMPROVEMENT = \$171

SURFACING

			Size	Cost/yd		
Spot rock	20	cy of	1 1/2"	\$2.69	=	\$54
Junction rock	10	cy of	1 1/2"	\$2.69	=	\$27
Landing rock	40	cy of	Jaw Run	\$21.68	=	\$867
Grade/process	2.0 sta	@	\$ 16.00 /sta	=	\$32	
Compact surface rock (with vibratory roller)	2.0 sta	@	\$ 13.20 /sta	=	\$26	

TOTAL ROCK COST = \$1,006

Compiled by: J. Long
Date: Dec 6, 2018

GRAND TOTAL =====> \$1,177

SUMMARY OF CONSTRUCTION COST

SALE Little Elk Thin Project # 2 LENGTH improve 2.1 sta
ROAD 5 to 6 Surfaced, outsloped

IMPROVEMENT

Remove sod 2.1 sta @ \$ 15.40 /sta = \$32
(with road grader)
Clear Landing 1.0 hr @ \$140.00 /hr = \$140
(with excavator)

TOTAL IMPROVEMENT = \$172

SURFACING

			Size	Cost/yd		
Spot rock	20	cy of	1 1/2"	\$2.69	=	\$54
Junction rock	10	cy of	1 1/2"	\$2.69	=	\$27
Landing rock	40	cy of	Jaw Run	\$21.68	=	\$867
Grade/process	2.1	sta @	\$ 16.00	/sta	=	\$34
Compact surface rock (with vibratory roller)	2.1	sta @	\$ 13.20	/sta	=	\$28

TOTAL ROCK COST = \$1,010

Compiled by: J. Long
Date: Dec 6, 2018

GRAND TOTAL =====> \$1,182

SUMMARY OF CONSTRUCTION COST

SALE ROAD	Little Elk Thin 7 to 8 (Baber Ridge Rd.)	Project # 2	LENGTH improve Surfaced, ditched	98.6 sta
-----------	---	-------------	-------------------------------------	----------

Remove sod (with road grader)	98.6 sta	@	\$ 15.40 /sta	=	\$1,518
----------------------------------	----------	---	---------------	---	---------

TOTAL IMPROVEMENT =	\$1,518
---------------------	---------

SURFACING

			Size	Cost/yd		
Spot rock	180 cy of		1½-0"	\$4.53	=	\$815
Turnouts (4)	40 cy of		1½-0"	\$4.53	=	\$181
Grade/process	98.6 sta	@	\$20.00 /sta	=	\$1,972	
Compact surface rock (with vibratory roller)	98.6 sta	@	\$ 13.20 /sta	=	\$1,302	

TOTAL ROCK COST =	\$4,270
-------------------	---------

Date:	Dec 6, 2018
-------	-------------

GRAND TOTAL =====>	\$5,788
--------------------	---------

SUMMARY OF CONSTRUCTION COST

SALE	Little Elk Thin	Project #	2	LENGTH	improve	23.2 sta
ROAD	8 to 9			Surfaced, outsloped		

Remove sod (with road grader)	23.2 sta	@	\$ 15.40 /sta	=	\$357
----------------------------------	----------	---	---------------	---	-------

SUBGRADE PREP COST =	\$357
----------------------	-------

Culvert Replacement

Sta. 16+10

24"x50' CPP	50 ft	@	\$18.73 /ft	=	\$937
Replace pipe and reconstruct fill w/C230 excavator	7 hr	@	\$140.00 /hr	=	\$980
Haul away waste material (W1)	3 hr	@	\$79.00 /hr	=	\$237
Import fill material	60 cy	@	\$5.00 /cy	=	\$300
Armor inlet and outlet	2 hr	@	\$140.00 /hr	=	\$280
Install dissipator	1 hr	@	\$140.00 /hr	=	\$140
Old culvert disposal				=	\$150

TOTAL FILL REPLACEMENT COST =	\$3,024
-------------------------------	---------

TOTAL IMPROVEMENT =	\$3,381
---------------------	---------

ROCK

			Size	Cost/yd	
2" lift	255 cy of		1½-0"	\$4.53	= \$1,155
Turnout (1)	10 cy of		1½-0"	\$4.53	= \$45
Junctions (2)	20 cy of		1½-0"	\$4.53	= \$91
Culvert bedding and backfill	30 cy of		1½-0"	\$4.53	= \$136
Dissipator	10 cy of		24"-6"	\$26.01	= \$260
Fill Armor	40 cy of		jaw-run	\$21.68	= \$867
Fill Surface/Base Rock	20 cy of		jaw-run	\$21.68	= \$434
Grade surface rock	23.2 sta	@	\$ 16.00 /sta	=	\$371
Compact surface rock (with vibratory roller)	23.2 sta	@	\$ 13.20 /sta	=	\$306

TOTAL ROCK COST =	\$3,665
-------------------	---------

Compiled by:	J. Long
Date:	Dec 6, 2018

GRAND TOTAL =====>	\$7,046
------------------------------	----------------

SUMMARY OF CONSTRUCTION COST

SALE	Little Elk Thin	Project #	2	LENGTH	improve	4.1 sta
ROAD	10 to G				Surfaced, outsloped	

Remove sod (with road grader)	4.1 sta	@	\$ 15.40 /sta	=	\$63
----------------------------------	---------	---	---------------	---	------

SUBGRADE PREP COST = \$63

SURFACING

			Size	Cost/yd		
2" lift	45 cy of		1½-0"	\$4.53	=	\$204
Grade surface rock	4.1 sta	@	\$ 16.00 /sta	=	\$66	
Compact surface rock (with vibratory roller)	4.1 sta	@	\$ 13.20 /sta	=	\$54	

TOTAL ROCK COST = \$324

Compiled by: J. Long
Date: Dec 6, 2018

GRAND TOTAL =====> \$387

SUMMARY OF CONSTRUCTION COST

SALE	Little Elk Thin	Project #	2	LENGTH	improve	58.1 sta
ROAD	11 to 12 (Salmon Forks Rd.)			Surfaced, ditch		

Remove sod	58.1 sta	@	\$ 15.40 /sta	=	\$895
------------	----------	---	---------------	---	-------

(with road grader)

Clear Landing	1.5 hr	@	\$140.00 /hr	=	\$210
---------------	--------	---	--------------	---	-------

(with excavator)

TOTAL IMPROVEMENT =	\$1,105
---------------------	---------

SURFACING

Turnouts (3)	30 cy of	Size	1½-0"	Cost/yd	\$4.53	=	\$136
--------------	----------	------	-------	---------	--------	---	-------

Junctions (3)	30 cy of	Size	1½-0"	Cost/yd	\$4.53	=	\$136
---------------	----------	------	-------	---------	--------	---	-------

Spot rock	160 cy of	Size	1½-0"	Cost/yd	\$4.53	=	\$725
-----------	-----------	------	-------	---------	--------	---	-------

Landing rock	40 cy of	Size	3"-0"	Cost/yd	\$5.37	=	\$215
--------------	----------	------	-------	---------	--------	---	-------

Grade surface rock	58.1 sta	@	\$ 16.00 /sta	=	\$930
--------------------	----------	---	---------------	---	-------

Compact surface rock	58.1 sta	@	\$ 13.20 /sta	=	\$767
----------------------	----------	---	---------------	---	-------

(with vibratory roller)

TOTAL ROCK COST =	\$2,909
-------------------	---------

Compiled by:	J. Long
Date:	Dec 6, 2018

GRAND TOTAL =====>	\$4,014
--------------------	---------

SUMMARY OF CONSTRUCTION COST

SALE ROAD	Little Elk Thin 13 to 14	Project # 2	LENGTH improve Surfaced, outsloped	7.3 sta
-----------	-----------------------------	-------------	---------------------------------------	---------

Remove sod (with road grader)	7.3 sta	@	\$ 15.40 /sta	=	\$112
Clear Landing (with excavator)	1.5 hr	@	\$140.00 /hr	=	\$210

TOTAL IMPROVEMENT = \$322

SURFACING

			Size	Cost/yd	
Spot rock	40 cy of		1½"-0"	\$4.53	= \$181
Landing rock	40 cy of		3"-0"	\$5.37	= \$215
Grade surface rock	7.3 sta	@	\$ 16.00 /sta	=	\$117
Compact surface rock (with vibratory roller)	7.3 sta	@	\$ 13.20 /sta	=	\$96

TOTAL ROCK COST = \$609

Compiled by:	J. Long
Date:	Dec 6, 2018

GRAND TOTAL =====> \$931

SUMMARY OF CONSTRUCTION COST

SALE ROAD	Little Elk Thin 15 to K (dirt)	Project # 2	LENGTH improve Unsurfaced, outsloped	17.9 sta
-----------	-----------------------------------	-------------	---	----------

Grade/outslope road (with road grader)	17.9 sta	@	\$ 15.40 /sta	=	\$276
---	----------	---	---------------	---	-------

TOTAL IMPROVEMENT =	\$276
---------------------	-------

Compiled by:	J. Long
Date:	Dec 6, 2018

GRAND TOTAL =====>	\$276
--------------------	-------

**Little Elk Thin Timber Sale
No. WO-341-2019-W00775-01**

Project No. 3

Mechanical Brushing Costs

Date: 10/25/18

Road Segment/ Point	Road Name	Length (feet)	Miles	Brush Density	Cost / Mile	Segment Cost
1 to 2	Miller Creek	5,180	0.98	Light	\$850.00	\$833
3 to 4		200	0.04	Light	\$850.00	\$34
5 to 6		210	0.04	Light	\$850.00	\$34
7 to 8	Baber Ridge	9,860	1.87	Medium	\$1,100.00	\$2,057
8 to 9		2,320	0.44	Medium	\$1,100.00	\$484
10 to G		410	0.08	Light	\$850.00	\$68
11 to 12	Salmon Forks	5,810	1.10	Heavy	\$1,550.00	\$1,705
13 to 14		730	0.14	Light	\$850.00	\$119
15 to K		1,790	0.34	Medium	\$1,100.00	\$374
16 to 17		1,120	0.21	Heavy	\$1,550.00	\$326
18 to 19		1,030	0.20	Heavy	\$1,550.00	\$310
Totals		28,660	5.44			\$6,344

SUMMARY OF MAINTENANCE COST

SALE	Little Elk Thin	- Final Maintenance Cost Estimate (Costed in appraisal, not in project costs)
------	-----------------	--

Grading	<u>Move-in</u>		
	Grader	\$	778

Road Segment	Length	Cost/Sta	Cost	Mileage
Deer Creek Rd	114.0	\$15.40	\$1,755.60	2.16
Baber Ridge Rd	83.0	\$15.40	\$1,278.20	1.57
Salmon Creek Rd	23.0	\$15.40	\$354.20	0.44
1 to 2	51.8	\$15.40	\$797.72	0.98
3 to 4	2.0	\$15.40	\$30.80	0.04
5 to 6	2.1	\$15.40	\$32.34	0.04
11 to 8	24.6	\$15.40	\$378.84	0.47
8 to 9	23.2	\$15.40	\$357.28	0.44
E to F	5.2	\$15.40	\$80.08	0.10
10 to G	4.1	\$15.40	\$63.14	0.08
G to H	3.0	\$15.40	\$46.20	0.06
11 to 12	58.1	\$15.40	\$894.74	1.10
13 to 14	7.3	\$15.40	\$112.42	0.14
Total	401.4		\$6,181.56	7.62

Maintenance Rock:

1½-0"	Volume	Cost/CY	Cost
	250	\$4.53	\$1,132.50

Grand Total	\$ 8,092.06
-------------	-------------

MBF	1,047
-----	-------

Cost / MBF = \$7.73

NOTES:

Rock source: State owned stockpiles - S1, S2 and S3 shown on Exhibit A
3"-0" rock may be substituted for 1 1/2"-0" where needed.

A minimum of 40 CY spot rock required for wear replacement on Weyco roads as a provision of road use permit (Section 2130 - Road Maintenance).

Rock Haul Cost Computation

SALE NAME: Little Elk Thin
ROAD NAME: Stromboulder Rd.
ROCK SOURCE: Richard Rock Quarry
Route: Hwy. 20 to Salmon Crk. Rd.

DATE: Dec 6, 2018
CLASS: Medium
10CY truck

Jaw-Run rock

C to D and Landings

TIME Computation:

Road speed time factors:

1.	55 MPH	10.0	MRT	10.9 minutes
2.	50 MPH	10.0	MRT	12.0 minutes
3.	45 MPH	9.0	MRT	12.0 minutes
4.	40 MPH		MRT	0.0 minutes
5.	35 MPH	8.0	MRT	13.7 minutes
6.	30 MPH		MRT	0.0 minutes
7.	25 MPH	1.0	MRT	2.4 minutes
8.	20 MPH	0.0	MRT	0.0 minutes
9.	15 MPH	2.0	MRT	8.0 minutes
10.	10 MPH	1.0	MRT	6.0 minutes
11.	05 MPH	0.4	MRT	4.8 minutes

Dump or spread time per RT

0.50 minutes

Total hauling cycle time for this setting
(100% efficiency)

70.30 minutes

Operator efficiency correction

0.85

82.71 minutes

Job efficiency correction

0.90

91.90 minutes

Truck capacity (CY)

10.00

9.19 min/CY

Loading time, delay time per CY

0.50 min/CY

TIME (minutes) per cubic yard

9.69 min/CY

COST per CY computation

Cost of truck and operator per hour

\$83.00 /hr.

Cost of truck and operator per minute

\$1.38 /min

Cost per CY

\$13.37 /CY

Spread and compact

Water truck, Grader & Roller

\$1.50 /CY

Size	Cost/Yd (Pit)	Cost Delivered w/o processing	Cost Delivered with processing
1½ - 0"	\$ 10.97	\$24.34	\$25.84
3 - 0"	\$ 9.31	\$22.68	\$24.18
Jaw Run	\$ 8.31	\$21.68	\$23.18
Pit-Run	7.65	\$21.02	\$22.52
6-8 open	12.64	\$26.01	\$27.51

Note: Rock costs from Rickard Rock Quarry - 4/1/17.

Rock Haul Cost Computation

SALE NAME: Little Elk Thin
ROAD NAME: Miller Creek Road
ROCK SOURCE: Salmon Creek Stockpile
Route: Salmon Creek Road

DATE: Dec 6, 2018
CLASS: Medium
10 CY truck

C to D

E to F

TIME Computation:

Road speed time factors:

1.	55 MPH	MRT	0.0 minutes
2.	50 MPH	MRT	0.0 minutes
3.	45 MPH	MRT	0.0 minutes
4.	40 MPH	MRT	0.0 minutes
5.	35 MPH	MRT	0.0 minutes
6.	30 MPH	MRT	0.0 minutes
7.	25 MPH	MRT	0.0 minutes
8.	20 MPH	MRT	0.0 minutes
9.	15 MPH	1.0 MRT	4.0 minutes
10.	10 MPH	0.5 MRT	3.0 minutes
11.	05 MPH	0.3 MRT	3.6 minutes

Dump or spread time per RT

0.50 minutes

Total hauling cycle time for this setting
(100% efficiency)

11.10 minutes

Operator efficiency correction

0.85

13.06 minutes

Job efficiency correction

0.90

14.51 minutes

Truck capacity (CY)

10.00

1.45 min/CY

Loading time, delay time per CY

0.50 min/CY

TIME (minutes) per cubic yard

1.95 min/CY

COST per CY computation

Cost of truck and operator per hour

\$83.00 /hr.

Cost of truck and operator per minute

\$1.38 /min

Cost per CY

\$2.69 /CY

Spread and compact

Water truck, Grader & Roller

\$1.50 /CY

Size	Cost/Yd (Pit)	Cost Delivered w/o processing	Cost Delivered with processing
1½ - 0"	\$ -	\$2.69	\$4.19
3 - 0"	\$ 9.31	\$12.00	\$13.50
Jaw Run	\$ 8.31	\$11.00	\$12.50
Pit-Run	7.65	\$10.34	\$11.84

Rock Haul Cost Computation

SALE NAME: Little Elk Thin	DATE: Dec 6, 2018
ROAD NAME: 7-8, 8-9, 10-G, 11-12, 13-14	CLASS: Medium
ROCK SOURCE: Deer Ridge Stockpile 1 1/2" rock	10 CY truck
Route: Baber Ridge Road	

TIME Computation:

Road speed time factors:

1.	55 MPH	MRT	0.0 minutes
2.	50 MPH	MRT	0.0 minutes
3.	45 MPH	MRT	0.0 minutes
4.	40 MPH	MRT	0.0 minutes
5.	35 MPH	MRT	0.0 minutes
6.	30 MPH	MRT	0.0 minutes
7.	25 MPH	1.0 MRT	2.4 minutes
8.	20 MPH	2.0 MRT	6.0 minutes
9.	15 MPH	1.0 MRT	4.0 minutes
10.	10 MPH	0.6 MRT	3.6 minutes
11.	05 MPH	0.4 MRT	4.8 minutes

Dump or spread time per RT	0.50 minutes
Total hauling cycle time for this setting (100% efficiency)	21.30 minutes

Operator efficiency correction	0.85	25.06 minutes
Job efficiency correction	0.90	27.84 minutes

Truck capacity (CY)	10.00	2.78 min/CY
Loading time, delay time per CY		0.50 min/CY
TIME (minutes) per cubic yard		3.28 min/CY

COST per CY computation

Cost of truck and operator per hour	\$83.00 /hr.
Cost of truck and operator per minute	\$1.38 /min

Cost per CY	\$4.53 /CY
-------------	------------

Spread and compact	Water truck, Grader & Roller	\$1.50 /CY
--------------------	------------------------------	------------

Size	Cost/Yd (Pit)	Cost Delivered w/o processing	Cost Delivered with processing
1½ - 0"	\$ -	\$4.53	\$6.03
3 - 0"	\$ -	\$4.53	\$6.03
Jaw Run	\$ -	\$4.53	\$6.03
Pit-Run	\$ -	\$4.53	\$6.03

Note: 1 1/2"-0" stockpile

Rock Haul Cost Computation

SALE NAME: Little Elk Thin	DATE: Dec 6, 2018
ROAD NAME: Maintenance Rock	CLASS: Medium
ROCK SOURCE: Salmon Ck 3" Stockpile (100 cy)	10 CY truck
Route: Salmon Creek Road	

TIME Computation:

Road speed time factors:

1.	55 MPH	MRT	0.0 minutes
2.	50 MPH	MRT	0.0 minutes
3.	45 MPH	MRT	0.0 minutes
4.	40 MPH	MRT	0.0 minutes
5.	35 MPH	MRT	0.0 minutes
6.	30 MPH	MRT	0.0 minutes
7.	25 MPH	0.0 MRT	0.0 minutes
8.	20 MPH	2.0 MRT	6.0 minutes
9.	15 MPH	1.0 MRT	4.0 minutes
10.	10 MPH	0.5 MRT	3.0 minutes
11.	05 MPH	0.3 MRT	3.6 minutes

Dump or spread time per RT	0.50 minutes
----------------------------	--------------

Total hauling cycle time for this setting (100% efficiency)	17.10 minutes
--	---------------

Operator efficiency correction	0.85	20.12 minutes
--------------------------------	------	---------------

Job efficiency correction	0.90	22.36 minutes
---------------------------	------	---------------

Truck capacity (CY)	10.00	2.24 min/CY
---------------------	-------	-------------

Loading time, delay time per CY	0.50 min/CY
---------------------------------	-------------

TIME (minutes) per cubic yard	2.74 min/CY
-------------------------------	-------------

COST per CY computation

Cost of truck and operator per hour	\$83.00 /hr.
-------------------------------------	--------------

Cost of truck and operator per minute	\$1.38 /min
---------------------------------------	-------------

Cost per CY	\$3.78 /CY
-------------	------------

Spread and compact Water truck, Grader & Roller	\$1.50 /CY
---	------------

Size	Cost/Yd (Pit)	Cost Delivered w/o processing	Cost Delivered with processing
1½ - 0"	\$ -	\$3.78	\$5.28
3 - 0"	\$ -	\$3.78	\$5.28
Jaw Run	\$ -	\$3.78	\$5.28
Pit-Run	\$ -	\$3.78	\$5.28

Note: 1,000 cy stockpile 3"-0"

Rock Haul Cost Computation

SALE NAME:	Little Elk Thin	DATE:	Dec 6, 2018
ROAD NAME:	New Construction Roads	CLASS:	Medium
ROCK SOURCE:	Deer Camp Stockpile 3" rock		10 CY truck
Route:	Baber Ridge Road		

C to D

E to F

TIME Computation:

Road speed time factors:

1.	55 MPH		MRT	0.0 minutes
2.	50 MPH		MRT	0.0 minutes
3.	45 MPH		MRT	0.0 minutes
4.	40 MPH		MRT	0.0 minutes
5.	35 MPH		MRT	0.0 minutes
6.	30 MPH		MRT	0.0 minutes
7.	25 MPH	2.0	MRT	4.8 minutes
8.	20 MPH	2.0	MRT	6.0 minutes
9.	15 MPH	2.0	MRT	8.0 minutes
10.	10 MPH	0.5	MRT	3.0 minutes
11.	05 MPH	0.3	MRT	3.6 minutes

Dump or spread time per RT		0.50 minutes
----------------------------	--	--------------

Total hauling cycle time for this setting (100% efficiency)	25.90 minutes
--	---------------

Operator efficiency correction	0.85	30.47 minutes
Job efficiency correction	0.90	33.86 minutes

Truck capacity (CY)	10.00	3.39 min/CY
Loading time, delay time per CY		0.50 min/CY
TIME (minutes) per cubic yard		3.89 min/CY

COST per CY computation

Cost of truck and operator per hour	\$83.00 /hr.
Cost of truck and operator per minute	\$1.38 /min

Cost per CY	\$5.37 /CY
-------------	------------

Spread and compact	Water truck, Grader & Roller	\$1.50 /CY
--------------------	------------------------------	------------

Size	Cost/Yd (Pit)	Cost Delivered w/o processing	Cost Delivered with processing
1½ - 0"	\$ -	\$5.37	\$6.87
3 - 0"	\$ -	\$5.37	\$6.87
Jaw Run	\$ -	\$5.37	\$6.87
Pit-Run	\$ -	\$5.37	\$6.87

Little Elk Thin (WO-341-2019-W00775-01)
FY 2019

TIMBER CRUISE REPORT

1. **Sale Area Location:** Portions of Sections 13 and 23, T11S, R9W, W.M., Lincoln County, Oregon.

2. **Fund Distribution:**

- a. **Fund** BOF 77%, CSL 23%
- b. **Tax Code**

3. **Sale Acreage by Area:**

Area	Treatment	Gross Acres	Stream Buffers	Existing Roads	Non-Thinnable Acres	Net Sale Acres	Acreage Comp. Method
1	Thinning	67	7	2	4	54	Ortho photo, GIS, GPS
2	Thinning	74	6	3	2	63	Ortho photo, GIS, GPS
3	Thinning	44	5	---	---	39	Ortho photo, GIS, GPS
Total		185	18	5	6	156	

4. **Cruisers and Cruise Dates:** The sale areas were cruised by Matt McBride, Jon Long, and Evelyn Hukari in September of 2018.
5. **Cruise Method and Computation:** Areas 1 through 3 of the sale were cruised using variable radius plot sampling using a 20 BAF and 3 to 1 count to grade ratio. A total of 51 plots were taken two chains apart on transects through the units. Two plots were dropped in low stocked areas within Area 1 and several acres taken out and mapped as non-thinnable. Trees on the graded plots were measured for DBH, height, form factor, grades, and defect. Data for Areas 1, 2, and 3 were entered into the Atterbury SuperACE 2008 cruise program to determine stand statistics and net board foot volume. Leave trees were taken out to determine volumes. Three acres of right-of-way volume was calculated using the total stand (take and leave) volume per acre. Digital ortho photos, 1991 aerial photos, LiDar, and ArcMap 10.4.1 were used to map the boundaries for the sale, and ArcMap 10.4.1 was used to determine gross and net acreage.
6. **Measurement Standards:** Tree heights were measured to the nearest foot to merchantable height at 7 inches (outside bark). Diameters were measured to the nearest inch, and form factors were measured or estimated. Most trees were graded in 40 foot log segments unless breakage, defect, or length to top of grade cruise diameter warranted otherwise.
7. **Timber Description:** Timber in the sale area consists of 32 to 34 year-old planted Douglas-fir, and minor amounts of red alder and big-leaf maple. The average DBH for the take trees is approximately 12 inches. The average volume per acre to be harvested (net) is approximately 6.4 MBF. The right-of-way volume for the new road construction in Areas 1 and 2 (3 acres) is approximately 20.5 MBF per acre.

8. Total Volume (MBF) by Species and Grade:

Areas 1-3 Combined	Species	Gross Cruise Volume	D&B (2%)	Net Sale Volume
Take Volume	Douglas-fir	989	4	985
R/W Volume	Douglas-fir	63	1	62
Total Volume	Douglas-fir	1,052	5	1,047

	Species	DBH	Net Vol.	2-Saw	3-Saw	4-Saw
		Grade Percentages		2%	82%	16%
Areas 1-3	Douglas -fir	12	985	14	810	161
R/W	Douglas -fir	14	62	7	46	9
Total Volume	Douglas -fir	12	1,047	21	856	170

Attachments:

- Cruise Maps
- Cruise Design
- Species/Sort/Grade-BF Vol.
- Project Statistics - Project Statistics
- Stand Table Summary
- Log Stock Table

Prepared by: Jon Long Date: 10/25/2018

Unit Forester: Evelyn Hukari Date: 11/05/2018

TC TSTATS				STATISTICS				PAGE	1	
				PROJECT	ELKTHIN			DATE	10/25/2018	
TWP	RGE	SECT	TRACT	TYPE	ACRES	PLOTS	TREES	CuFt	BdFt	
11S	09W	23	ALL	THIN	153.00	49	462	1	W	
				TREES	ESTIMATED	PERCENT				
				PER PLOT	TOTAL	SAMPLE				
					TREES	TREES				
TOTAL		49	462	9.4						
CRUISE		20	138	6.9	28,283	.5				
DBH COUNT										
REFOREST										
COUNT		29	267	9.2						
BLANKS										
100 %										
STAND SUMMARY										
SAMPLE		TREES	AVG	BOLE	REL	BASAL	GROSS	NET	GROSS	NET
TREES		/ACRE	DBH	LEN	DEN	AREA	BF/AC	BF/AC	CF/AC	CF/AC
DF-L		80	112.3	14.5	56	33.7	128.2	14,220	14,087	4,131
DF-T		55	71.0	12.3	49	16.7	58.8	6,461	6,438	1,793
R ALDER-L		3	1.6	13.7	38	0.4	1.6	92	92	34
TOTAL		138	184.9	13.7	53	51.0	188.6	20,774	20,617	5,958
CONFIDENCE LIMITS OF THE SAMPLE										
68.1 TIMES OUT OF 100 THE VOLUME WILL BE WITHIN THE SAMPLE ERROR										
CL:	68.1 %	COEFF	SAMPLE TREES - BF				# OF TREES REQ.		INF. POP.	
SD:	1.0	VAR.%	S.E.%	LOW	AVG	HIGH	5	10	15	
DF-L		45.7	5.1	137	144	151				
DF-T		44.7	6.0	97	103	109				
R ALDER-L		16.7	11.5	53	60	67				
TOTAL		49.2	4.2	120	126	131	97	24	11	
CL:	68.1 %	COEFF	TREES/ACRE				# OF PLOTS REQ.		INF. POP.	
SD:	1.0	VAR.%	S.E.%	LOW	AVG	HIGH	5	10	15	
DF-L		12.2	1.7	110	112	114				
DF-T		58.3	8.3	65	71	77				
R ALDER-L		346.4	49.4	1	2	2				
TOTAL		14.8	2.1	181	185	189	9	2	1	
CL:	68.1 %	COEFF	BASAL AREA/ACRE				# OF PLOTS REQ.		INF. POP.	
SD:	1.0	VAR.%	S.E.%	LOW	AVG	HIGH	5	10	15	
DF-L		9.0	1.3	127	128	130				
DF-T		56.2	8.0	54	59	63				
R ALDER-L		338.9	48.4	1	2	2				
TOTAL				189	189	189				
CL:	68.1 %	COEFF	NET BF/ACRE				# OF PLOTS REQ.		INF. POP.	
SD:	1.0	VAR.%	S.E.%	LOW	AVG	HIGH	5	10	15	
DF-L		10.9	1.6	13,868	14,087	14,305				
DF-T		57.0	8.1	5,914	6,438	6,962				
R ALDER-L		340.2	48.6	48	92	137				
TOTAL		6.9	1.0	20,413	20,617	20,821	2	0	0	

TC		TSTNDSUM															Stand Table Summary									
										Project					ELKTHIN											
T11S R09W S23 TTHIN															T11S R09W S23 TTHIN											
Twp		Rge		Sec		Tract		Type			Acres		Plots		Sample Trees		Page: 1									
11S		09W		23		ALL		THIN			153.00		49		173		Date: 10/25/20									
															Time: 9:28:50AM											
Spc	S	DBH	Sample		FF	Ht	Av	Trees/	BA/	Logs	Average Log		Tons/	Net	Net	Totals										
			Trees	16'							Net	Net				Tons	Cu.Ft.	Bd.Ft.	Tons	Cunits	MBF					
DF	L	11	3	87	63			7.283	4.81	7.28	15.3	53.3		112	388		171	59								
DF	L	12	10	87	71			20.579	16.02	28.74	14.7	50.8		423	1,459		648	223								
DF	L	13	14	87	79			24.333	22.43	45.19	14.5	49.6		657	2,242		1,005	343								
DF	L	14	9	86	87			13.488	14.42	26.98	17.7	60.6		478	1,633		731	250								
DF	L	15	11	87	82			14.360	17.62	28.72	20.0	66.4		573	1,906		877	292								
DF	L	16	11	86	90			12.621	17.62	25.24	24.1	83.2		609	2,100		932	321								
DF	L	17	8	86	91			8.131	12.82	16.26	28.4	101.2		462	1,647		708	252								
DF	L	18	6	85	93			5.439	9.61	10.88	31.5	105.0		343	1,142		524	175								
DF	L	19	5	86	94			4.068	8.01	8.14	35.8	118.0		291	960		446	147								
DF	L	20	1	86	97			.734	1.60	1.47	40.0	130.0		59	191		90	29								
DF	L	21	1	86	105			.666	1.60	1.33	45.5	150.0		61	200		93	31								
DF	L	22	1	85	106			.607	1.60	1.21	52.0	180.0		63	218		97	33								
DF		Totals		80	87	82		112.309	128.16	201.44	20.5	69.9		4,131	14,087		6,321	2,155								
DF	T	9	2	88	60			4.838	2.14	4.84	10.5	45.0		51	218		78	33								
DF	T	10	5	86	66			10.008	5.34	10.01	12.6	51.7		126	518		192	79								
DF	T	11	6	88	89			9.716	6.41	16.19	11.9	46.0		193	745		295	114								
DF	T	12	13	86	77			17.809	13.89	24.61	15.6	53.9		383	1,327		586	203								
DF	T	13	13	87	85			15.072	13.89	27.82	15.9	52.9		442	1,472		676	225								
DF	T	14	3	87	95			2.999	3.21	6.00	18.8	68.3		113	410		173	63								
DF	T	15	7	86	88			6.096	7.48	12.19	20.8	74.3		253	906		388	139								
DF	T	16	4	87	89			3.061	4.27	6.12	24.8	90.0		152	551		232	84								
DF	T	17	2	85	99			1.356	2.14	2.71	29.8	107.5		81	292		123	45								
DF		Totals		55	87	80		70.955	58.78	110.50	16.2	58.3		1,793	6,438		2,743	985								
RA	L	12	1	87	53			.693	.54	.69	16.0	50.0		11	35		17	5								
RA	L	14	1	87	62			.509	.54	.51	21.0	60.0		11	31		16	5								
RA	L	16	1	86	53			.390	.54	.39	32.0	70.0		12	27		19	4								
RA		Totals		3	87	56		1.592	1.63	1.59	21.5	58.1		34	92		52	14								
Totals		138		87	81			184.855	188.57	313.53	19.0	65.8		5958	20,617		9,116	3,154								

T		Species, Sort Grade - Board Foot Volumes (Type)												Page		1					
		Project: ELKTHIN												Date		10/25/2018					
														Time		9:28:48AM					
T11S R09W S23 TTHIN										T11S R09W S23 TTHIN											
Twp		Rge		Sec		Tract		Type		Acres		Plots		Sample Trees		CuFt		BdFt			
11S		09W		23		ALL		THIN		153.00		49		173		1		W			
S So Gr T rt ad Spp				% Net BdFt	Bd. Ft. per Acre Def% Gross Net			Total Net MBF	Percent Net Board Foot Volume								Average Log				Logs Per /Acre
									Log Scale Dia.				Log Length				Ln Dia Bd CF/ Ft In Ft Lf				
DF	L	DO	2M	16		2,340	2,340	358		39	61			32	68	37	12	185	1.36	12.6	
DF	L	DO	3M	71	1.1	10,154	10,043	1,537		100				24	76	37	8	89	0.71	113.3	
DF	L	DO	4M	13	1.3	1,726	1,703	261	3	97			80	15	4	18	6	23	0.38	75.5	
DF	L	Totals		68	.9	14,220	14,087	2,155	0	90	10		10	2	23	65	30	7	70	0.68	201.4
DF	T	DO	CU													7	8		0.00	2.2	
DF	T	DO	2M	1		95	95	15		100				100		32	11	140	1.16	.7	
DF	T	DO	3M	82	.4	5,316	5,293	810		100			0	4	25	70	36	7	76	0.59	69.5
DF	T	DO	4M	17		1,050	1,050	161	2	98			47	45		8	20	6	26	0.35	40.3
DF	T	Totals		31	.4	6,461	6,438	985	0	100			8	11	22	59	30	7	57	0.53	112.7
RA	L	DO	CU													6	12		0.00	.5	
RA	L	DO	CR	100		92	92	14		100				37	63	35	7	58	0.61	1.6	
RA	L	Totals		0		92	92	14		100				37	63	28	8	44	0.58	2.1	
Type Totals					.8	20,774	20,617	3,154	0	93	7		9	5	23	63	30	7	65	0.63	316.3

T		TSPCSTGR		Species, Sort Grade - Board Foot Volumes (Type)										Page		1				
				Project: ELKTHIN										Date		10/25/2018				
														Time		9:44:17AM				
T11S R09W S23 TR/W										T11S R09W S23 TR/W										
Twp		Rge		Sec		Tract		Type		Acres		Plots		Sample Trees		CuFt		BdFt		
11S		09W		23		ALL		R/W		3.00		49		173		1		W		
S So Gr T rt ad Spp			%	Bd. Ft. per Acre			Total	Percent Net Board Foot Volume								Average Log				Logs Per /Acre
								Log Scale Dia.				Log Length				Ln Dia Bd CF/				
			Net	Def%	Gross	Net	Net MBF	4-5	6-11	12-16	17+	12-20	21-30	31-35	36-99	Ft	In	Ft	Lf	
DF DO CU																				
DF DO 2M			11		2,435	2,435	7		41	59				35	65		37	12	183	1.35
DF DO 3M			75	.9	15,470	15,336	46		100			0	1	25	74		37	8	84	0.66
DF DO 4M			14	.8	2,776	2,753	8	2	98			68	27	3	3		19	6	24	0.37
DF Totals			100	.8	20,682	20,525	62	0	93	7		9	5	23	63		30	7	65	0.63
RA DO CU																				
RA DO CR			100		92	92	0		100					37	63		35	7	58	0.61
RA Totals			0		92	92	0		100					37	63		28	8	44	0.58
Type Totals				.8	20,774	20,617	62	0	93	7		9	5	23	63		30	7	65	0.63

Log Stock Table - MBF

Project: ELKTHIN

T11S R09W S23 TTHIN

T11S R09W S23 TTHIN

Twp Rge Sec Tract
11S 09W 23 ALL

Type Acres Plots Sample Trees
THIN 153.00 49 173

Page 1
Date 10/25/2018
Time 9:28:47AM

Spp	T	S	So	Gr	Log	Len	Gross MBF	% Def	Net MBF	% Spc	Net Volume by Scaling Diameter in Inches											
											2-3	4-5	6-7	8-9	10-11	12-13	14-15	16-19	20-23	24-29	30-39	40+
DF	L	DO	2M	32			47		47	1.5					47							
DF	L	DO	2M	34			68		68	2.2					44	24						
DF	L	DO	2M	40			243		243	7.7					95	122	27					
DF	L	DO	3M	32			308	3.0	299	9.5			73	226								
DF	L	DO	3M	34			74	2.7	72	2.3			48		24							
DF	L	DO	3M	36			117		117	3.7			35	82								
DF	L	DO	3M	38			7		7	.2			7									
DF	L	DO	3M	40			1,047	.5	1,041	33.2			175	479	387							
DF	L	DO	4M	16			141		141	4.5			136	5								
DF	L	DO	4M	18			34		34	1.1			34									
DF	L	DO	4M	20			34		34	1.1			22	12								
DF	L	DO	4M	24			30		30	.9		7	23									
DF	L	DO	4M	28			4		4	.1			4									
DF	L	DO	4M	30			6		6	.2			6									
DF	L	DO	4M	34			15	23.4	11	.4			11									
DF	T	DO	CU	6																		
DF	T	DO	CU	8																		
DF	T	DO	2M	32			15		15	.5					15							
DF	T	DO	3M	16			4		4	.1			4									
DF	T	DO	3M	22			10		10	.3				10								
DF	T	DO	3M	28			13		13	.4					13							
DF	T	DO	3M	30			11	16.7	9	.3				9								
DF	T	DO	3M	32			165	1.1	163	5.2			107	40	16							
DF	T	DO	3M	34			42		42	1.3			12	12	17							
DF	T	DO	3M	36			77		77	2.5			62	15								
DF	T	DO	3M	38			27		27	.8			12	14								
DF	T	DO	3M	40			465		465	14.8			151	243	71							
DF	T	DO	4M	14			12		12	.4			12									
DF	T	DO	4M	16			47		47	1.5			47									
DF	T	DO	4M	18			4		4	.1			4									
DF	T	DO	4M	20			14		14	.4		4	10									
DF	T	DO	4M	21			4		4	.1			4									
DF	T	DO	4M	22			19		19	.6			19									
DF	T	DO	4M	24			18		18	.6			18									
DF	T	DO	4M	26			4		4	.1			4									
DF	T	DO	4M	30			28		28	.9			28									
DF	T	DO	4M	40			12		12	.4			12									
DF			Totals				3,164		3,140	99.6		10	1079	1148	683	192	27					
RA	L	DO	CU	6																		
RA	L	DO	CR	30			5		5	37.5			5									
RA	L	DO	CR	38			5		5	33.0			5									
RA	L	DO	CR	40			4		4	29.5			4									
RA			Totals				14		14	.4			14									
Total All Species							3,178		3,154	100.0		10	1093	1148	683	192	27					

FPA Written Plan for Timber Harvest in a MMMA

Little Elk Creek Timber Sale (Area 3)

Portions of Section 23, T11S, R9W, W.M., Lincoln County, Oregon.

Protected Resource: Salmon Creek Marbled Murrelet Management Area (Endangered species nesting site).

Situation: The southeast portion of Area 3 is within the non-habitat buffer of the Salmon Creek Marbled Murrelet Management Area (MMMA). Commercial thinning operations will occur within the non-habitat buffer of the MMMA.

Resource Protection Measures:

1. Felling, Cable Yarding and Ground Yarding Operations within the MMMA shall not be allowed from April 1 through August 5, or from August 6 through September 15 between two hours before sunset and two hours after sunrise.
2. The use of chainsaws within the MMMA shall not be allowed from April 1 through August 5, or from August 6 through September 15 between two hours before sunset to two hours after sunrise.
3. Cable Landing locations in the MMMA will require pre-marking by operator and review and approval by an ODF representative.
4. Human food trash will be policed and removed from all project areas, landings, and roadways on a daily basis. Food items and food waste will be stored inside appropriate containers or vehicles.
5. Tailholds and guylines in the Occupied Habitat of the MMMA will have the following additional restrictions:
 - a. Consultation with STATE and approval of tailholds, guylines, and cable line placement is required before tailholding or guylining is allowed in this area. (A lead time of two weeks is required to schedule a field consultation between ODF, PURCHASER, the Operator, and the person responsible for line placement.)
 - b. The following trees within the MMMA will not be selected for tailhold or guyline anchors:
 - i. Trees with potential nest platforms or immediately surrounding trees that provide cover to the potential nest platforms, as determined by STATE.
 - ii. The largest trees in the areas where the number of large trees is limited.
 - iii. Minor conifer species not commonly found in the stand.
 - c. Cables located within the MMMA will be located so that raising, lowering or use of the line will not damage trees considered to have suitable nesting platforms or associated cover trees.
 - d. Any plans to tailhold in the MMMA must be addressed in the Operations Plan and at the Pre-Operations meeting.

I, the undersigned, submit this written plan in compliance with the requirements of the Forest Practices Act, regarding operations conducted within 300 feet of an endangered species nesting site.

PURCHASER REPRESENTATIVE

DATE

STATE REPRESENTATIVE

DATE

FPA Written Plan for Timber Harvest within 100' of a Type F stream

Little Elk Thin Timber Sale (Areas 1 and 3)

Portions of Sections 13 and 23, T11S, R09W, W.M., Lincoln County, Oregon.

Protected Resources: **Area 1-** A small Type F tributary to Little Elk Creek. **Area 3 -** Salmon Creek, a medium Type F stream, and a small Type F tributary to Salmon Creek.

Situation: Approximately 1,500 feet of a small, Type F stream (Little Elk Creek tributary) is adjacent to the east boundary of Area 1. Approximately 1,200 feet of a medium, Type F stream (Salmon Creek) is adjacent to the east boundary of Area 3, and approximately 1,800 feet of a small, Type F stream (Salmon Creek tributary) is adjacent to the north boundary of Area 3.

Harvest operations may occur within 100 feet of these streams, and skylines may pass over these streams. This is a commercial thinning sale, an average of 130 square feet of basal area will be left in the harvest areas after logging is completed.

Resource Protection Measures:

1. An average 50 foot (minimum of at least 25 foot) horizontal distance no-harvest stream buffer has been established along all portions of the Type F streams bordering the sale areas.
2. Trees adjacent to the stream buffers shall be felled so that they do not enter into the buffer.
3. Logs will not be yarded over the stream buffers, but tailholds for skyline cable yarding will likely be needed on the other side of these streams.
4. Where the logging system requires the skyline to pass over the stream, cables will be pulled out of the streamside vegetation prior to rigging the next yarding road.
5. Skyline corridors passing over the stream will be spaced a minimum of 100 feet apart.
6. Skyline cables will not be lowered into streamside vegetation during the yarding cycle.

I, the undersigned, submit this written plan in compliance with the requirements of the Forest Practices Act, regarding operations conducted within 100 feet of Type F streams.

PURCHASER REPRESENTATIVE

DATE

STATE REPRESENTATIVE

DATE



Oregon Department of Forestry **OPERATIONAL PERIODS and SEASONAL RESTRICTIONS**

West Oregon, NWOA
 24533 ALSEA HWY, PHILOMATH, OR 97370
 (541) 929-3266

ODF/State Forests
 Operational Periods and Seasonal Restriction
 WALT Sys Gen Report 2014
 Page 1 of 1

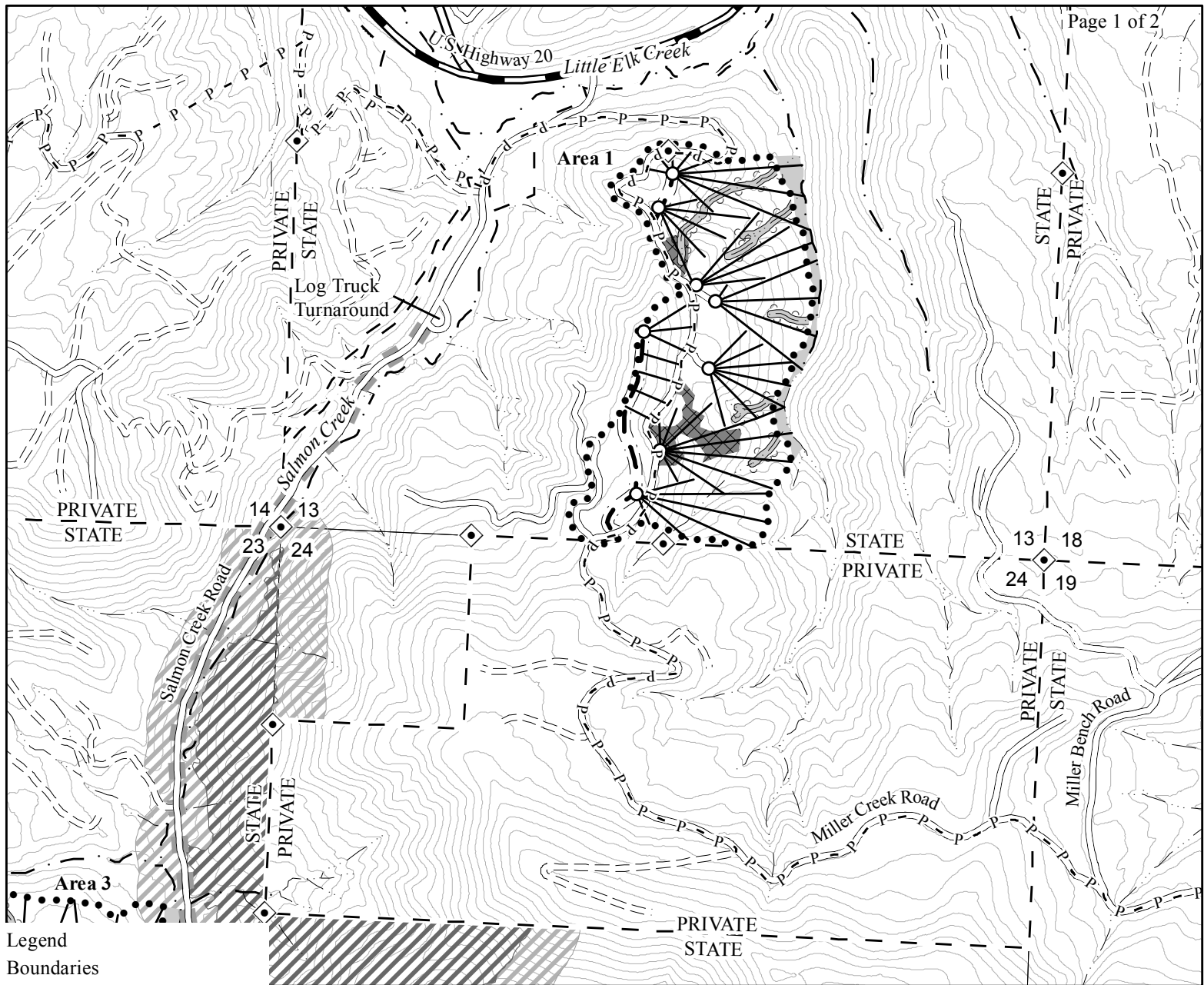
Sale Number	Sale Name	Expiration Date
WO-341-<None>-W00775-01	Little Elk Thin	December 31, 2021

Harvesting	Comments	Units	Project	Jan		Feb		Mar		Apr		May		Jun		Jul		Aug		Sep		Oct		Nov		Dec		Date
				1	15	1	15	1	15	1	15	1	15	1	15	1	15	1	15	1	15	1	15	1	15	1	15	
Ground yarding																												
Felling in seasonal restricted area	Portions of Area 3 located within the MMMA																											
Cable yarding in seasonally restricted area	Portions of Area 3 located within the MMMA																											
Ground yarding in seasonally restricted area	Portions of Area 3 located within the MMMA, in addition to above ground yarding restriction																											
Chainsaw use in seasonally restricted area	Creating Tailholds in any portion of MMMA in/adjacent to Area 3																											
Other	Complete all Harvest Operations on Areas 2 and 3																										4/1/2021	

Hauling	Comments	Units	Project	Jan		Feb		Mar		Apr		May		Jun		Jul		Aug		Sep		Oct		Nov		Dec		Date
				1	15	1	15	1	15	1	15	1	15	1	15	1	15	1	15	1	15	1	15	1	15	1	15	
Log Hauling on Unsurfaced Roads																												

Project Work	Comments	Units	Project	Jan		Feb		Mar		Apr		May		Jun		Jul		Aug		Sep		Oct		Nov		Dec		Date
				1	15	1	15	1	15	1	15	1	15	1	15	1	15	1	15	1	15	1	15	1	15	1	15	
Activity in Live Streams	Culvert replacement																											
Landing and Road Construction or Improvement Operations																												
Non-project roads and landings																												

Operation Allowed
 Operation Restricted
 Activity Restricted 2 hours before sunset and 2 hours after sunrise



Legend

Boundaries

••••• Timber Sale Boundary

--- Right of Way (Posted)

Roads

== Highway

== County Road

== Surfaced Road

== Unsurfaced Road

--- New Construction

■ Seasonal Road Restriction

Streams

••• Type F Stream

••• Type N Stream

~ Unposted Stream Buffer

■ Stream Buffer

Marbled Murrelet Management Area

▨ Occupied Habitat

▨ Non-Habitat Buffer

— Cable Corridors

○ Landings

◆ Land Survey Monument

P - P - Buried Fiber Optic Line

▨ Partial Cut Not Required

LOGGING PLAN

OF TIMBER SALE CONTRACT NO. WO-341-2019-W00775-01

LITTLE ELK THIN

PORTIONS OF SECTIONS 13, 23 & 24

T11S, R09W, W.M.,

LINCOLN COUNTY, OREGON

This product is for informational use and may not have been prepared for or be suitable for legal, engineering or survey purposes. Users of this information should review or consult the primary data and information sources to ascertain the usability of this information.

Scale

1:12,000

1,000

0

1,000

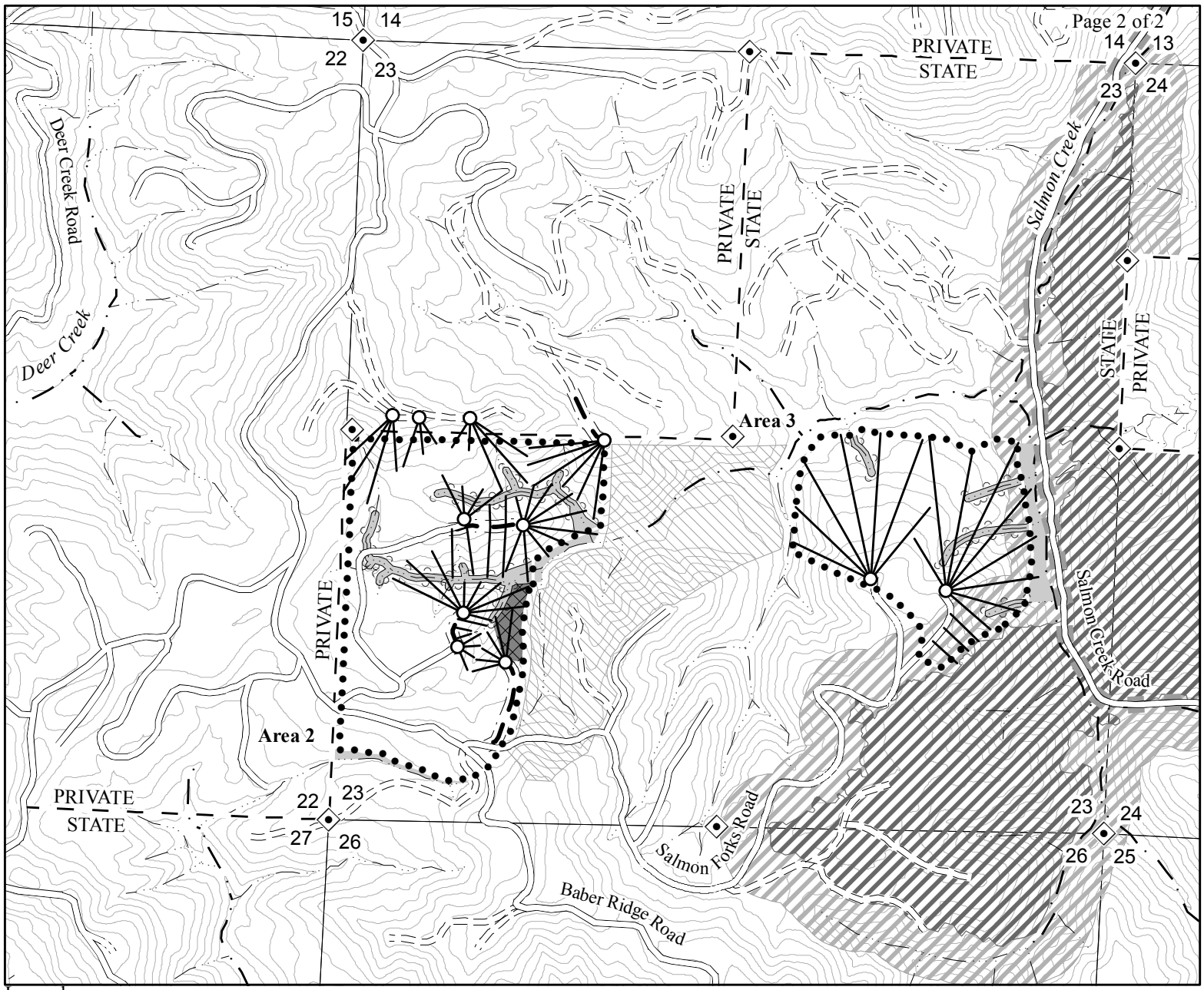
2,000

Feet

AREA	NET ACRES	
	TRACTOR	CABLE
1 (PC)	12	42
2 (PC)	38	25
3 (PC)	4	35
TOTAL	54	102



Created By: Blake McKinley
 blake.mckinley@oregon.gov
 Date: 10/29/2018



- Legend**
- Boundaries**
- Timber Sale Boundary
 - Right of Way (Posted)
- Roads**
- ==== Surfaced Road
 - === Unsurfaced Road
 - New Construction
 - Seasonal Road Restriction
- Streams**
- — · Type F Stream
 - Type N Stream
 - ~~~~~ Unposted Stream Buffer
 - Stream Buffer
- Marbled Murrelet Management Area**
- ▨ Occupied Habitat
 - ▧ Non-Habitat Buffer
 - ▩ Reforestation Area
- Cable Corridors**
- Landings
 - ◆ Land Survey Monument
 - ▨ Partial Cut Not Required

LOGGING PLAN OF TIMBER SALE CONTRACT NO. WO-341-2019-W00775-01 LITTLE ELK THIN PORTIONS OF SECTIONS 13, 23 & 24 T11S, R09W, W.M., LINCOLN COUNTY, OREGON

AREA	NET ACRES	
	TRACTOR	CABLE
1 (PC)	12	42
2 (PC)	38	25
3 (PC)	4	35
TOTAL	54	102

This product is for informational use and may not have been prepared for or be suitable for legal, engineering or survey purposes. Users of this information should review or consult the primary data and information sources to ascertain the usability of this information.

