

**Beast of Burden****Appraisal (Chip)**

KL-341-2019-W00773-01

Location      Gilchrist State Forest  
 Portions of sections 32 and 33 T24S, R9E  
 Portions of sections 4, 5, and 8 T25S R9E  
 Willamette Meridian, Klamath County, Oregon

**Volume Harvestable**

Total Acres		781	Ac
Optional Harvest Zones	8%	65	Ac (bypass)
Total Harvest Area		716	Ac
Additional Optional Entry Area	10%	72	Ac
General Harvest Area		644	Ac
			6 green tons / acre harvestable
			8 green tons / acre harvestable

**Value**

5,584.80 total green tons

\$1.00 min bid price / green ton

**\$5,584.80** Approximate Value

The Volume harvestable refers to all material to be felled. PURCHASER may sort the felled product into Sawlog and Chip material. The price shall be the same for all material harvested. Refer to Exhibit C for details (Sawmill and Pulp). Refer to section 1740 in the contract for log prices.

STATE makes no guarantee as to the accuracy or amount harvestable for the terms of this contract.

**Variables****Harvest Yields**

716 Acres harvestable  
 10% % optional entry area  
 644 GHA acres (general harvest area)  
 8 GHA green tons / acre  
 5155.2 GHA total green tons  
 71.6 OEA acres (optional entry area)  
 6 OEA green tons / acre  
 429.6 OEA total green tons  
 5584.8 total green tons  
 169 total loads  
 0.24 Loads per acre

**Assumptions**

33.0	green tons / load
35.0%	moisture
21.5	bdt / load

## Costs

### Trucking Costs

\$1,000.00	haul cost / load
\$30.30	haul cost / green ton

### Processing Costs

\$250.00	Chipper / hour
\$100.00	Skid / hour
1.00	hours / load
\$350.00	cost / load
\$10.61	cost / green Ton

### Total Costs per Green Ton

\$38.46	Cutting
\$10.61	Processing
\$30.30	Trucking
\$0.90	Obligations
\$80.27	Total

### Profit / Risk per Green Ton

10%	Profit / Risk
\$8.03	Profit & Risk / green ton

### Cutting Costs

\$150.00	Buncher Cost per hour
5584.80	Total Green Tons
7.80	Green Tons / acre
0.24	Loads / acre
5.00	acre cut / day (assume 10 hr day)
\$300.00	cost / acre
\$1,269.23	cost / load
\$38.46	Cost / green ton

### Project Work (non-credit)

\$2,250.00	*Road Maintenance (sections 2130 and 2360)
\$2,250.00	*Pile Construction (sections 2550 and 2560)
\$500.00	*Road Closures (section 2360)
\$5,000.00	total
\$0.90	cost / green ton

\*Project Work (non-credit) costs are approximate.  
The actual cost will depend on operation conditions  
AND operative damages as determined by STATE.

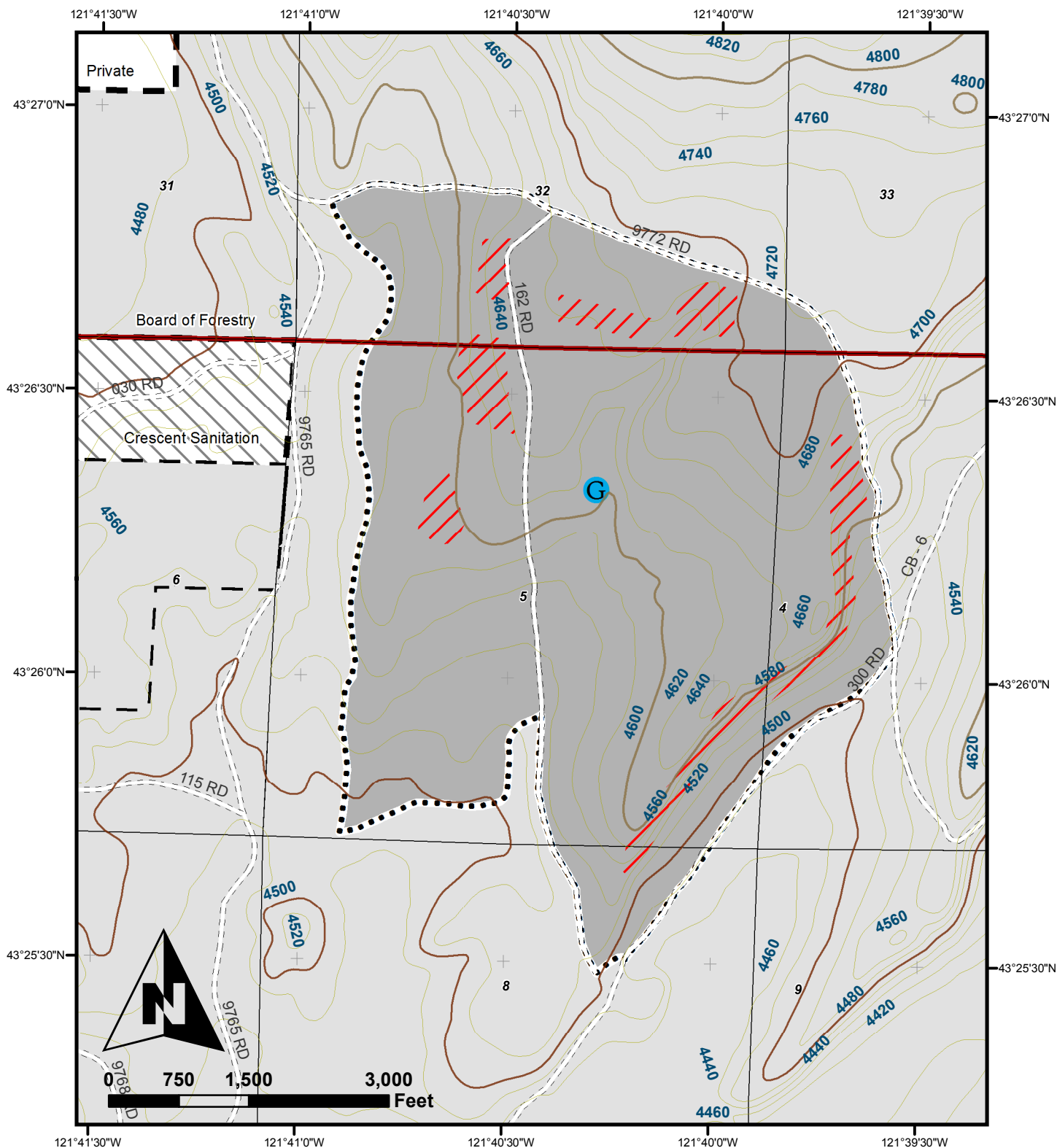
## Payment

### Payment

\$137.37	payment per / ton
35.0%	moisture
\$89.29	payment / green ton
\$2,946.59	payment / load

### Pricing

\$89.29	payment / green ton
\$80.27	costs / green ton
\$8.03	Profit & Risk / green ton
\$1.00	minimum bid



# **Logging Plan**

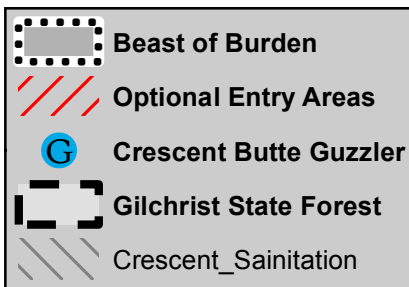
## **BEAST OF BURDEN TIMBER SALE**

**KL-341-2019-W00773-01**

Portions of Sections 32 and 33, T24S, R9E  
 Portions of Sections 4, 5, and 8 T25S R9E  
 W.M., Klamath County, Oregon

**781 Acres**

65 Acres of Optional Entry



**1:18,000**