



Exhibit A

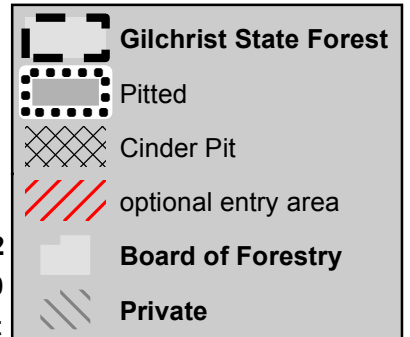
PITTED TIMBER SALE

KL-341-2019-W00772-01

Portions of Sections 16, 17, 20, and 21, T24S, R9E
W.M., Klamath County, Oregon

651 Gross Acres - 644 Net Acres

26 Acres of Optional Entry 7 Acre Cinder Pit Exclusion



Map 1 of 2
1:18,000
1 inch = 1,500 feet

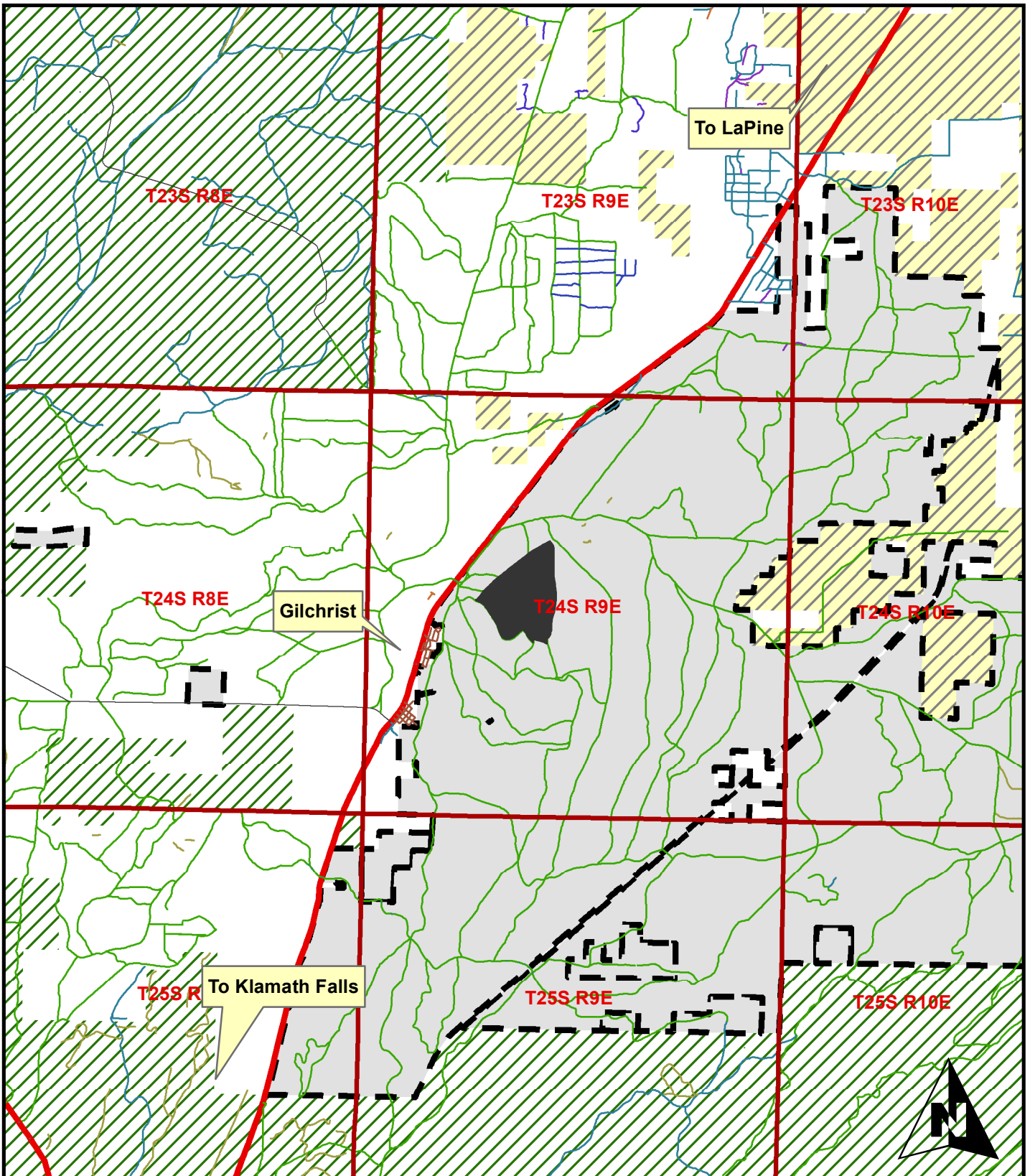
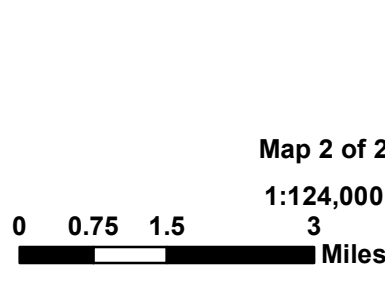







Exhibit A
PITTTED TIMBER SALE
KL-341-2019-W00772-01
 Vicinity Map
651 Gross Acres - 644 Net Acres



-  Pitted
-  Gilchrist State Forest
-  BLM
-  Private
-  USFS