

**Pitted****Appraisal (Chip)**

KL-341-2019-W00772-01

**Location**      Gilchrist State Forest

Portions of sections 16, 17,20, and 21 of T24S, R9E

W.M., Klamath County, Oregon

Willamette Meridian, Klamath County, Oregon

**Volume Harvestable**

Total Acres		651	Ac	
Optional Harvest Zones	4%	26	Ac	(bypass)
Pummic Pit		7	Ac	
Total Harvest Area		625	Ac	
Additional Optional Entry Area	10%	63	Ac	6 green tons / acre harvestable
General Harvest Area		563	Ac	8 green tons / acre harvestable

**Value**

4,875.00 total green tons

\$1.00 min bid price / green ton

**\$4,875.00** Approximate Value

The Volume harvestable refers to all material to be felled. PURCHASER may sort the felled product into Sawlog and Chip material. The price shall be the same for all material harvested. Refer to Exhibit C for details (Sawmill and Pulp). Refer to section 1740 in the contract for log prices.

STATE makes no guarantee as to the accuracy or amount harvestable for the terms of this contract.

**Variables****Harvest Yields**

625 Acres harvestable  
 10% % optional entry area  
 563 GHA acres (general harvest area)  
 8 GHA green tons / acre  
 4500.0 GHA total green tons  
 62.5 OEA acres (optional entry area)  
 6 OEA green tons / acre  
 375.0 OEA total green tons  
 4875.0 total green tons  
 148 total loads  
 0.24 Loads per acre

**Assumptions**

33.0 green tons / load  
 35.0% moisture  
 21.5 bdt / load

## Costs

### Trucking Costs

\$1,000.00	haul cost / load
\$30.30	haul cost / green ton

### Processing Costs

\$250.00	Chipper / hour
\$100.00	Skid / hour
1.00	hours / load
\$350.00	cost / load
\$10.61	cost / green Ton

### Total Costs per Green Ton

\$38.46	Cutting
\$10.61	Processing
\$30.30	Trucking
\$1.03	Obligations
\$80.40	Total

### Profit / Risk per Green Ton

10%	Profit / Risk
\$8.04	Profit & Risk / green ton

### Cutting Costs

\$150.00	Buncher Cost per hour
4875.00	Total Green Tons
7.80	Green Tons / acre
0.24	Loads / acre
5.00	acre cut / day (assume 10 hr day)
\$300.00	cost / acre
\$1,269.23	cost / load
\$38.46	Cost / green ton

### Project Work (non-credit)

\$2,250.00	*Road Maintenance (sections 2130 and 2360)
\$2,250.00	*Pile Construction (sections 2550 and 2560)
\$500.00	*Road Closures (section 2360)
\$5,000.00	total
\$1.03	cost / green ton

\*Project Work (non-credit) costs are approximate. The actual cost will depend on operation conditions AND operative damages as determined by STATE.

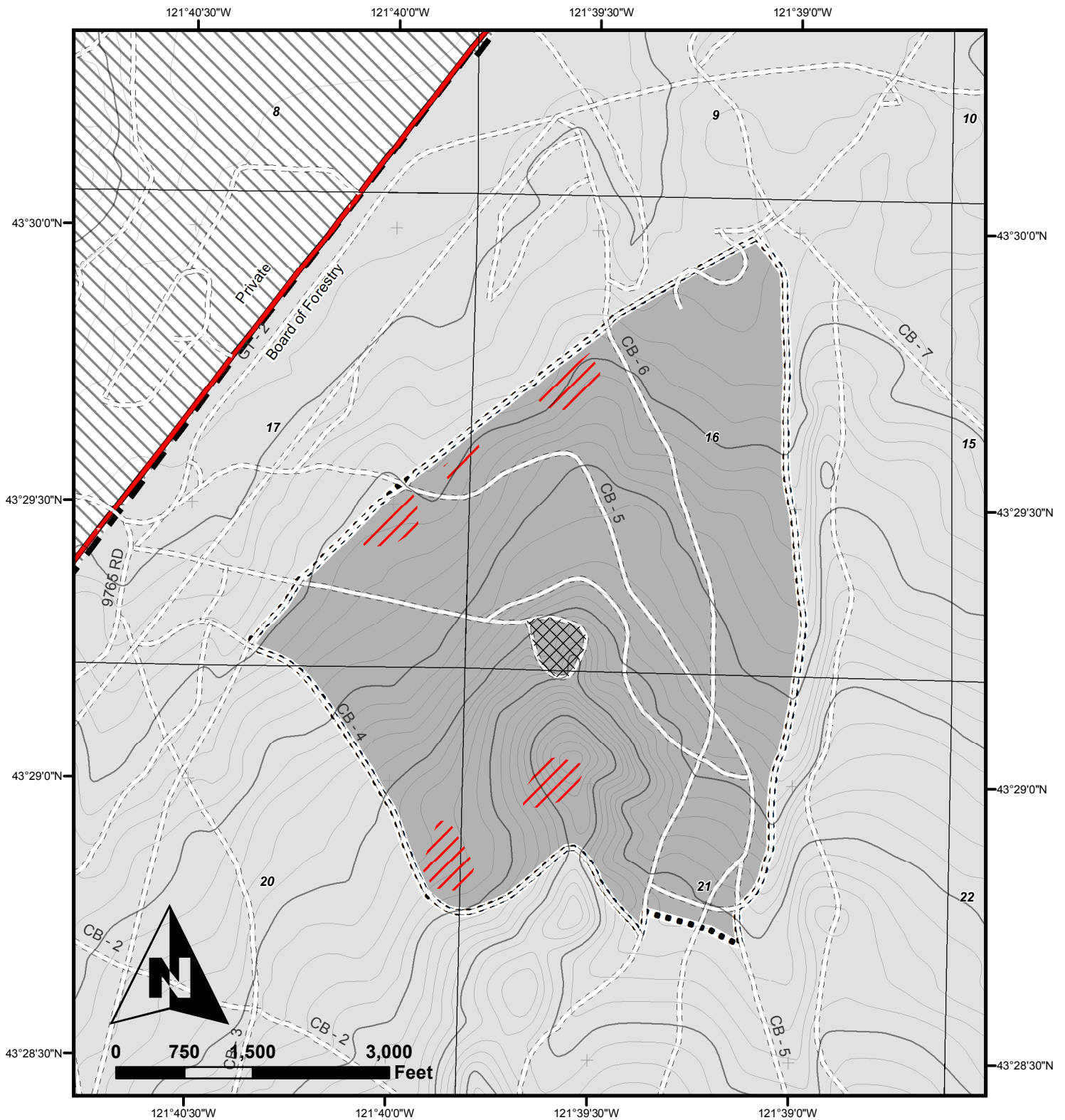
## Payment

### Payment

\$137.60	payment per / ton
35.0%	moisture
\$89.44	payment / green ton
\$2,951.52	payment / load

### Pricing

\$89.44	payment / green ton
\$80.40	costs / green ton
\$8.04	Profit & Risk / green ton
\$1.00	minimum bid



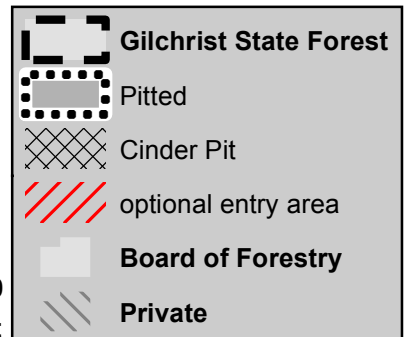
# **Logging Plan** **PITTED TIMBER SALE**

**KL-341-2019-W00772-01**

Portions of Sections 16, 17, 20, and 21, T24S, R9E  
W.M., Klamath County, Oregon

**651 Gross Acres - 644 Net Acres**

26 Acres of Optional Entry      7 Acre Cinder Pit Exclusion



**1:18,000**  
**1 inch = 1,500 feet**