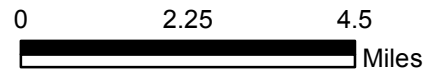


**EXHIBIT A
VICINITY MAP**

**Sale No. CS-341-2019-GF7418-07
Long Ridge GNA**

Portions of Sections 12,13,
14,15,16,21,22,24,27,34
T38S, R12W, W.M.
and Portions of Section
19, T38S R11W, W.M.
Curry County, Oregon
Regulated Use Area SK-2

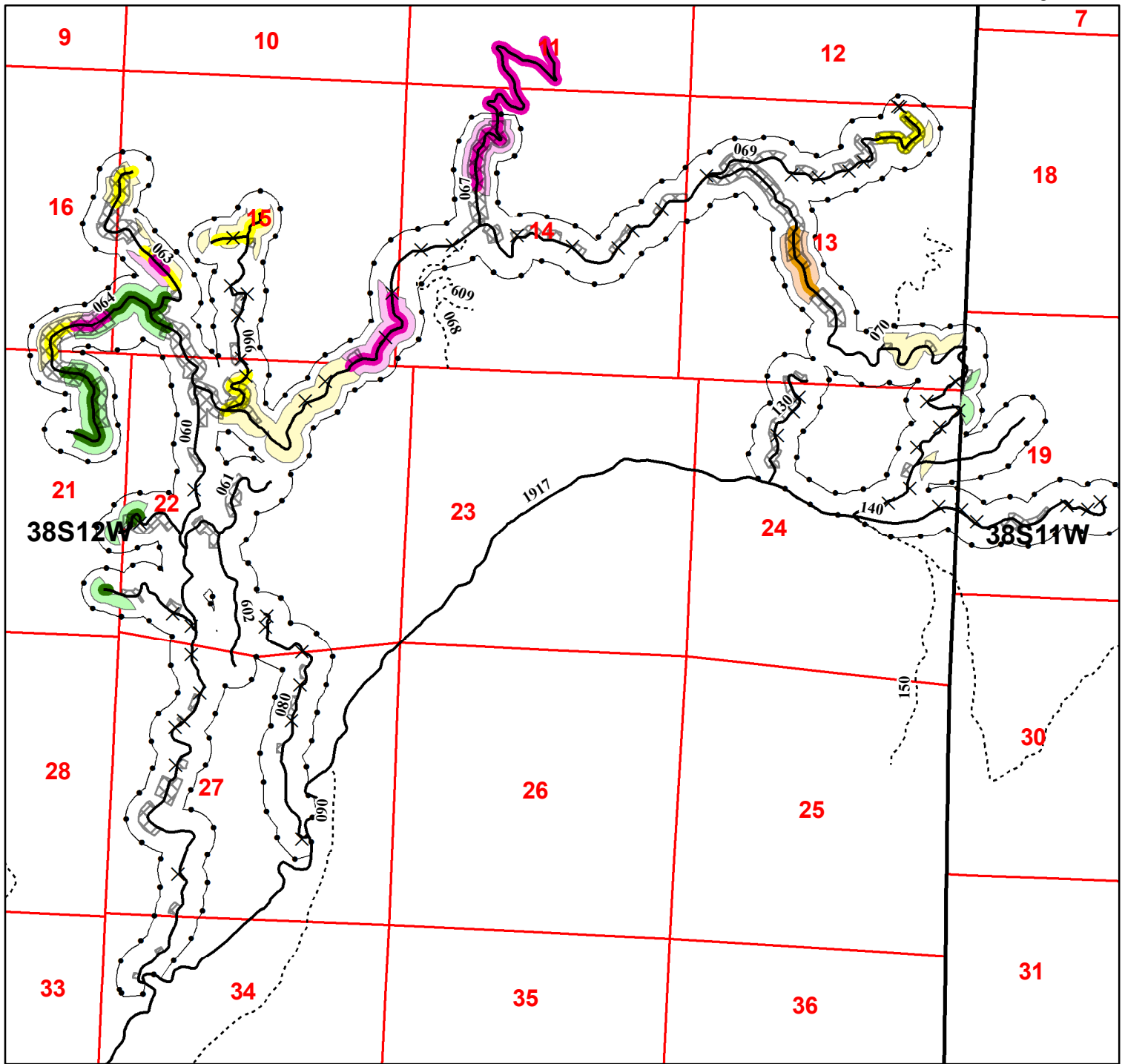
Approximately 200 Net
Harvest Acres



1:163,856 1 inch = 3 miles

-  Rivers
-  Timber Sale Boundary
- Ownership**
-  Other Non-Federal Land
-  Federal Land

The information shown on Exhibit "A" map(s) are approximate locations. Exact locations of features represented by map symbols will be determined on site and shall depend upon the conditions that exist on site. Activities shall be conducted based upon features determined on site rather than features shown on maps.



The information shown on Exhibit "A" map(s) are approximate locations. Exact locations of features represented by map symbols will be determined on site and shall depend upon the conditions that exist on site. Activities shall be conducted based upon features determined on site rather than features shown on maps.

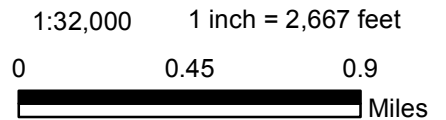
EXHIBIT A

**Sale No. CS-341-2019-GF7418-07
Long Ridge GNA**

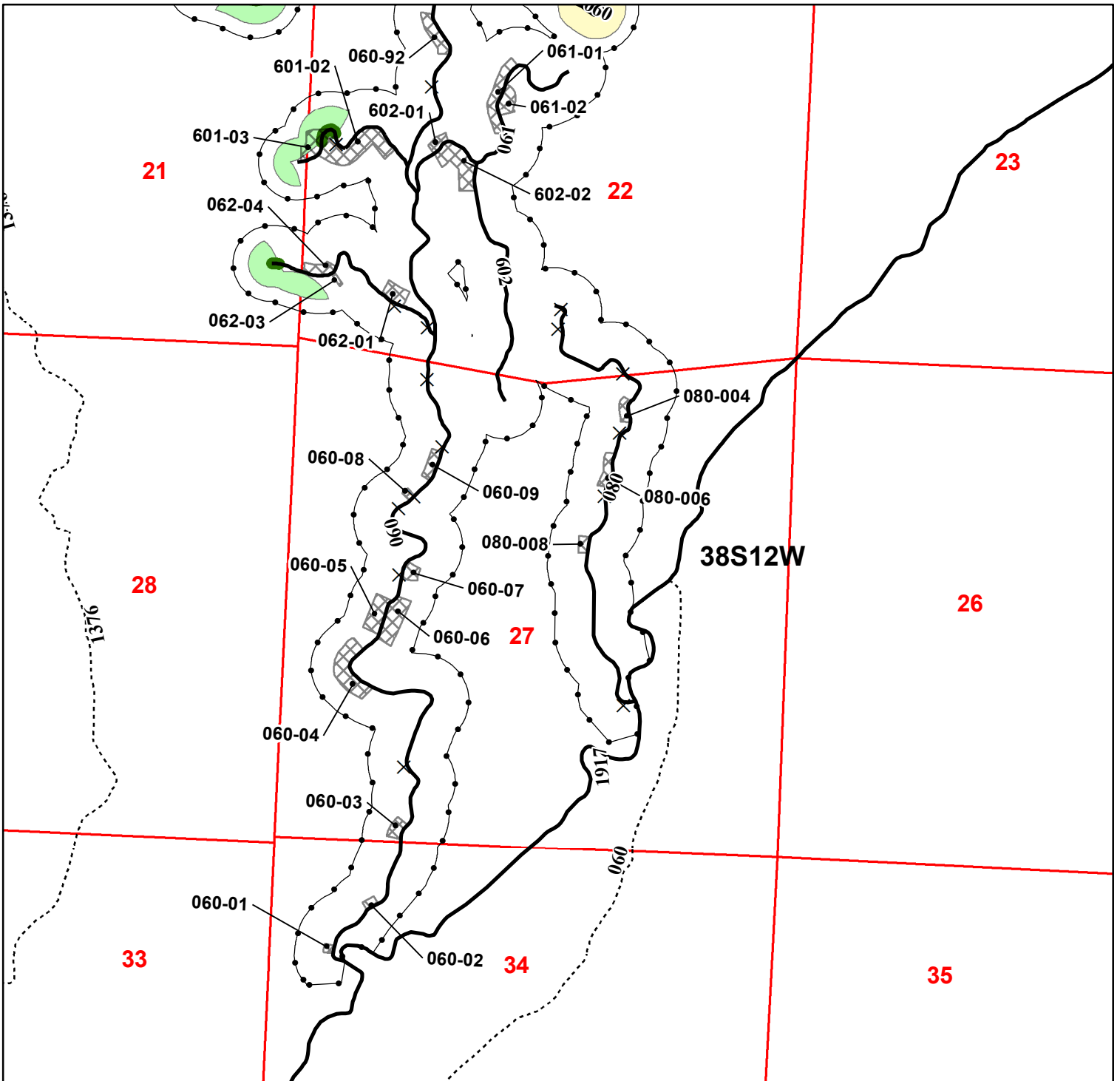
Approximately 200 Net Harvest Acres



Portions of Sections 12,13,14,15,16,21,22,24,27,34
T38S, R12W, W.M. and Portions of Section
19, T38S R11W, W.M. Curry County, Oregon
Regulated Use Area SK-2



- | | | |
|-----------------------------|--|--|
| Timber Sale Boundary | Seasonal Hauling Restrictions Sec. 2455 | Seasonal Operating Restrictions Sec. 2455 |
| Treatment Subdivision | MAMU Hauling Restrictions | MAMU Operating Restrictions |
| Individual Tree Marking | Both MAMU and NSO Hauling Restrictions | Both MAMU and NSO Operating Restrictions |
| Purchaser Maintained Roads | NSO Hauling Restrictions | NSO Operating Restrictions |
| Government Maintained Roads | NSO and Habitat Hauling Restrictions | NSO and Habitat Operating Restrictions |

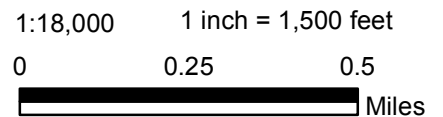


The information shown on Exhibit "A" map(s) are approximate locations. Exact locations of features represented by map symbols will be determined on site and shall depend upon the conditions that exist on site. Activities shall be conducted based upon features determined on site rather than features shown on maps.

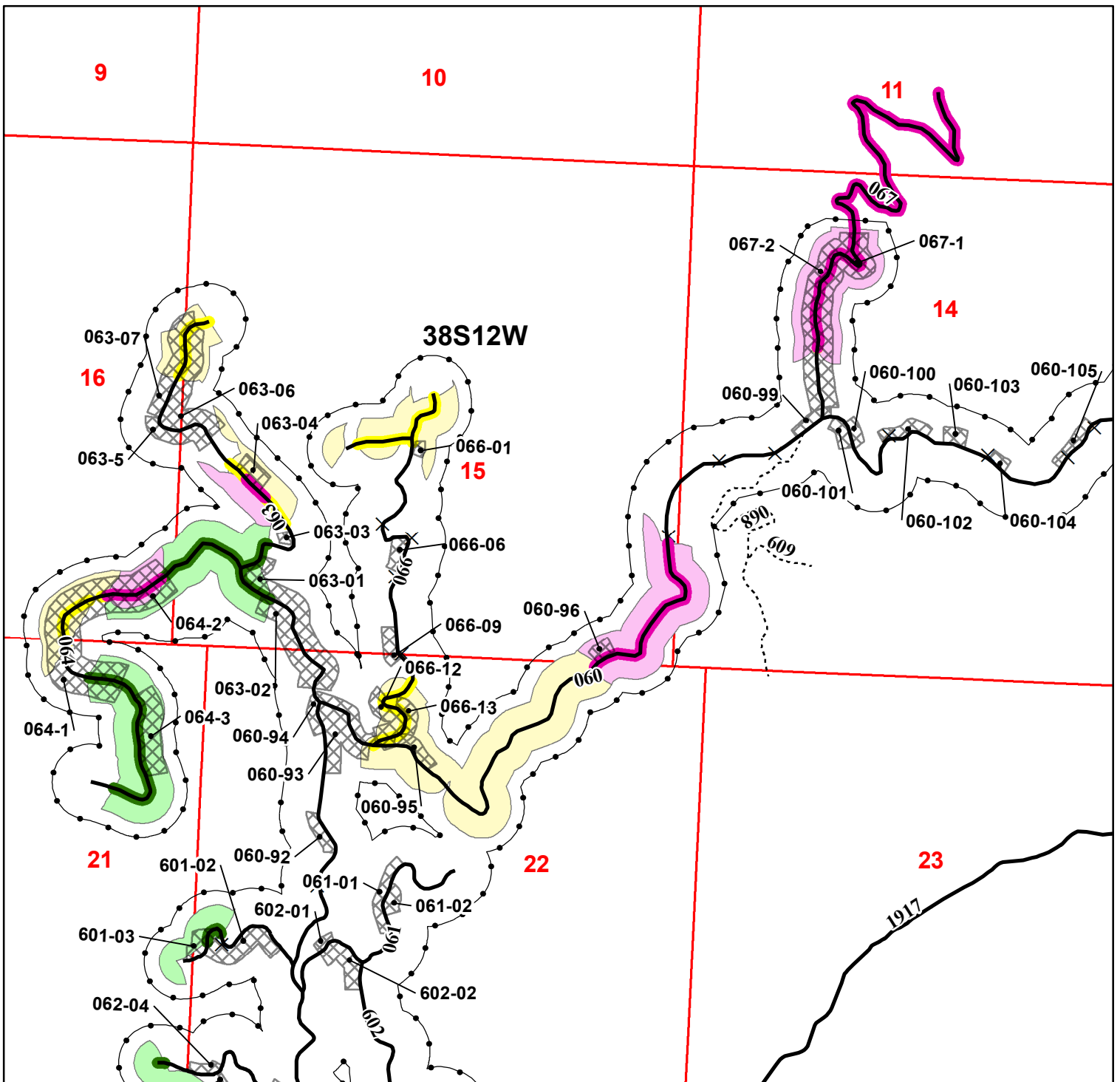
EXHIBIT A
Sale No. CS-341-2019-GF7418-07
Long Ridge GNA

Portions of Sections 12,13,14,15,16,21,22,24,27,34
 T38S, R12W, W.M. and Portions of Section
 19, T38S R11W, W.M. Curry County, Oregon
 Regulated Use Area SK-2

Approximately 200 Net
 Harvest Acres



- | | | |
|-----------------------------|--|--|
| Timber Sale Boundary | Seasonal Hauling Restrictions Sec. 2455 | Seasonal Operating Restrictions Sec. 2455 |
| Purchaser Maintained Roads | MAMU Hauling Restrictions | MAMU Operating Restrictions |
| Government Maintained Roads | Both MAMU and NSO Hauling Restrictions | Both MAMU and NSO Operating Restrictions |
| Treatment Subdivision | NSO Hauling Restrictions | NSO Operating Restrictions |
| Individual Tree Marking | NSO and Habitat Hauling Restrictions | NSO and Habitat Operating Restrictions |

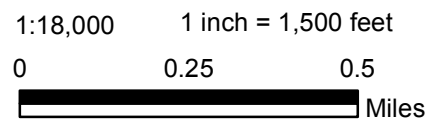


The information shown on Exhibit "A" map(s) are approximate locations. Exact locations of features represented by map symbols will be determined on site and shall depend upon the conditions that exist on site. Activities shall be conducted based upon features determined on site rather than features shown on maps.

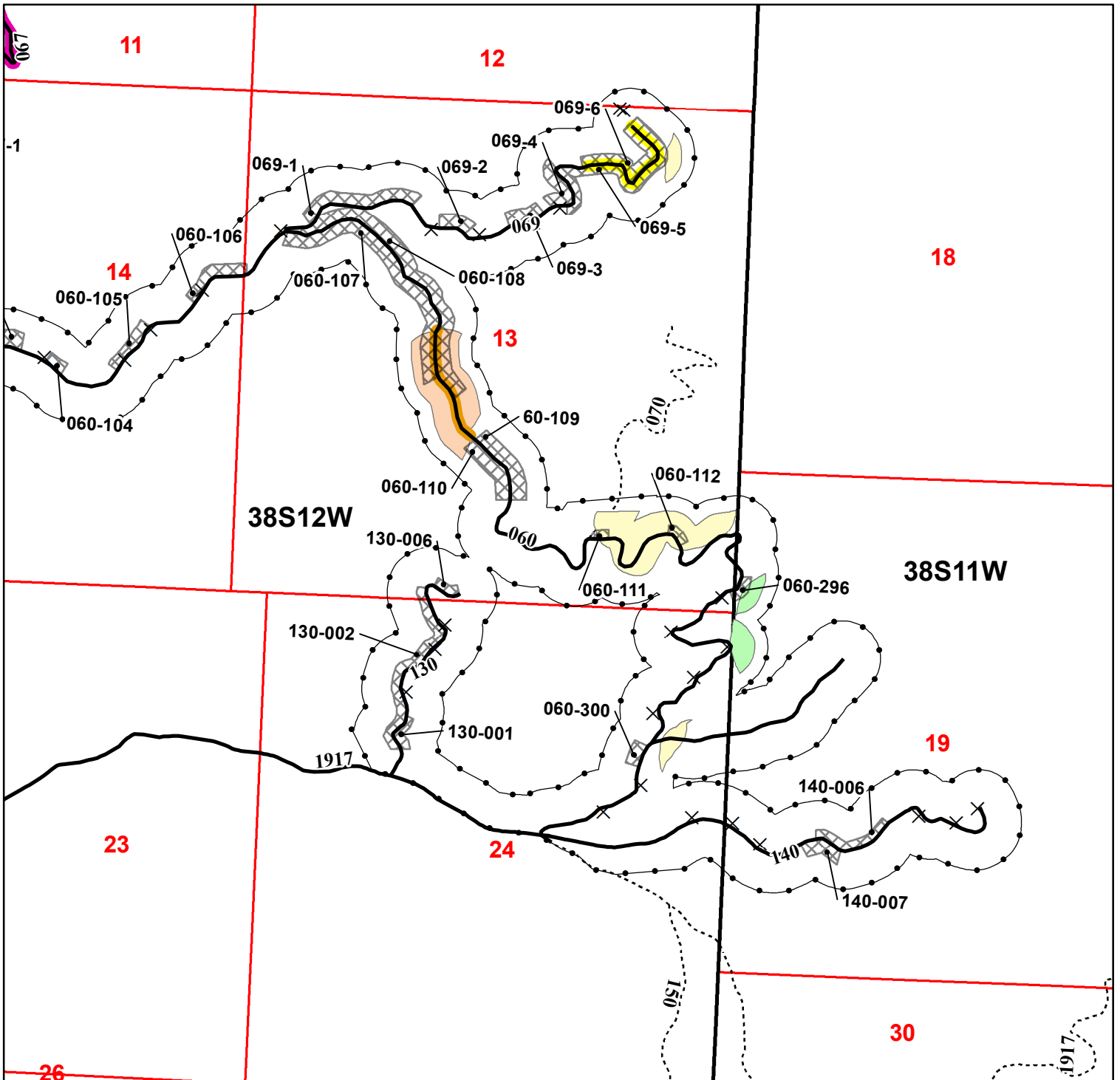
EXHIBIT A
Sale No. CS-341-2019-GF7418-07
Long Ridge GNA

Portions of Sections 12,13,14,15,16,21,22,24,27,34
 T38S, R12W, W.M. and Portions of Section
 19, T38S R11W, W.M. Curry County, Oregon
 Regulated Use Area SK-2

Approximately 200 Net
 Harvest Acres



- | | | |
|-----------------------------|--|--|
| Timber Sale Boundary | Seasonal Hauling Restrictions Sec. 2455 | Seasonal Operating Restrictions Sec. 2455 |
| Purchaser Maintained Roads | MAMU Hauling Restrictions | MAMU Operating Restrictions |
| Government Maintained Roads | Both MAMU and NSO Hauling Restrictions | Both MAMU and NSO Operating Restrictions |
| Treatment Subdivision | NSO Hauling Restrictions | NSO Operating Restrictions |
| Individual Tree Marking | NSO and Habitat Hauling Restrictions | NSO and Habitat Operating Restrictions |

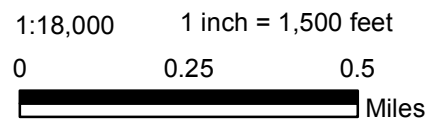


The information shown on Exhibit "A" map(s) are approximate locations. Exact locations of features represented by map symbols will be determined on site and shall depend upon the conditions that exist on site. Activities shall be conducted based upon features determined on site rather than features shown on maps.

EXHIBIT A
Sale No. CS-341-2019-GF7418-07
Long Ridge GNA

Portions of Sections 12,13,14,15,16,21,22,24,27,34
 T38S, R12W, W.M. and Portions of Section
 19, T38S R11W, W.M. Curry County, Oregon
 Regulated Use Area SK-2

Approximately 200 Net
 Harvest Acres



- | | | |
|-----------------------------|--|--|
| Timber Sale Boundary | Seasonal Hauling Restrictions Sec. 2455 | Seasonal Operating Restrictions Sec. 2455 |
| Purchaser Maintained Roads | MAMU Hauling Restrictions | MAMU Operating Restrictions |
| Government Maintained Roads | Both MAMU and NSO Hauling Restrictions | Both MAMU and NSO Operating Restrictions |
| Treatment Subdivision | NSO Hauling Restrictions | NSO Operating Restrictions |
| Individual Tree Marking | NSO and Habitat Hauling Restrictions | NSO and Habitat Operating Restrictions |