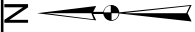
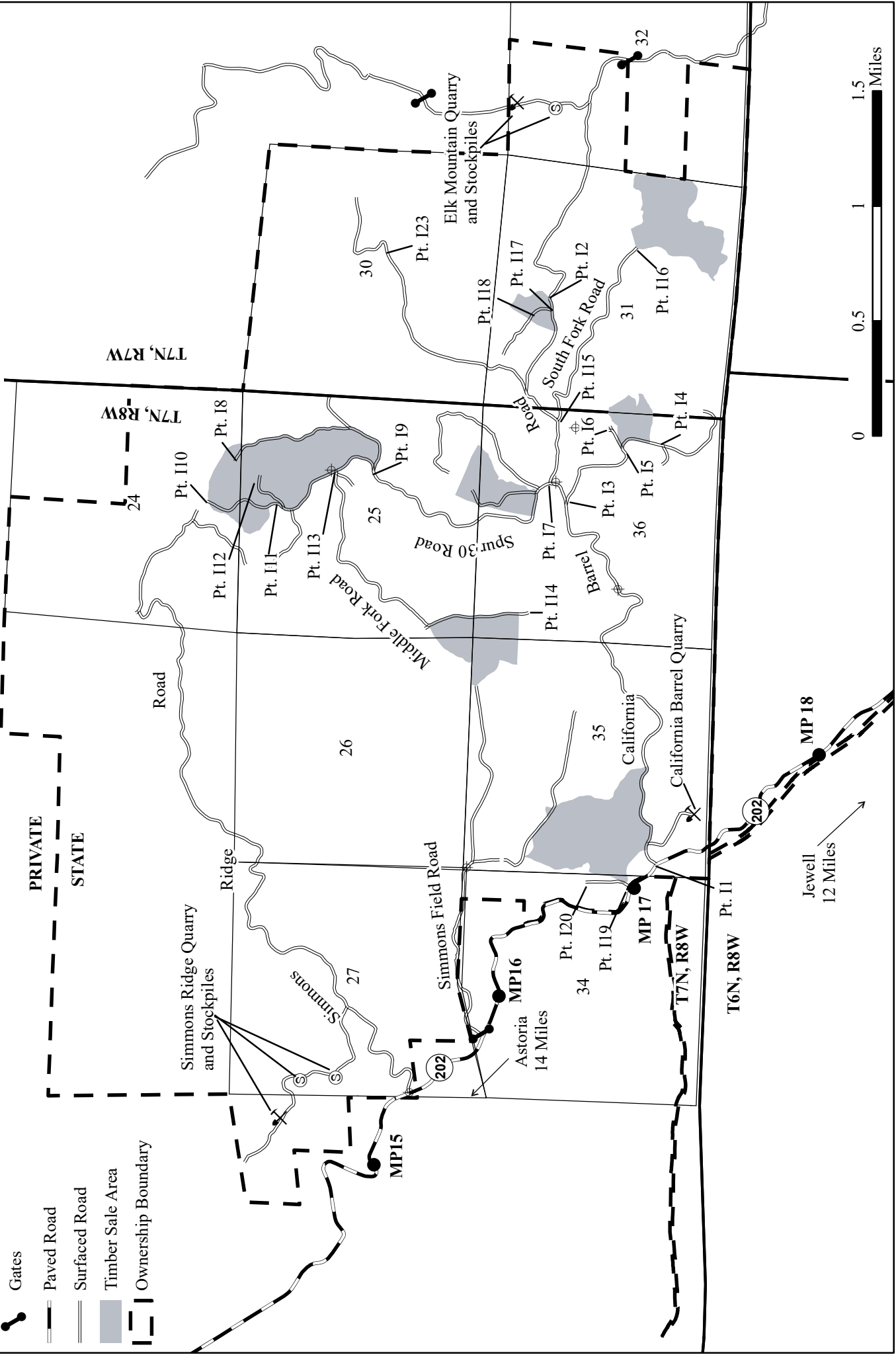


VICINITY MAP  
OF TIMBER SALE CONTRACT CAL BARR  
PORTIONS OF SECTIONS 24, 25, 26, 34, 35,  
and 36 T7N, R8W and PORTIONS OF SECTION  
31, T7N, R7W, W.M., CLATSOP COUNTY, OREGON



Legend

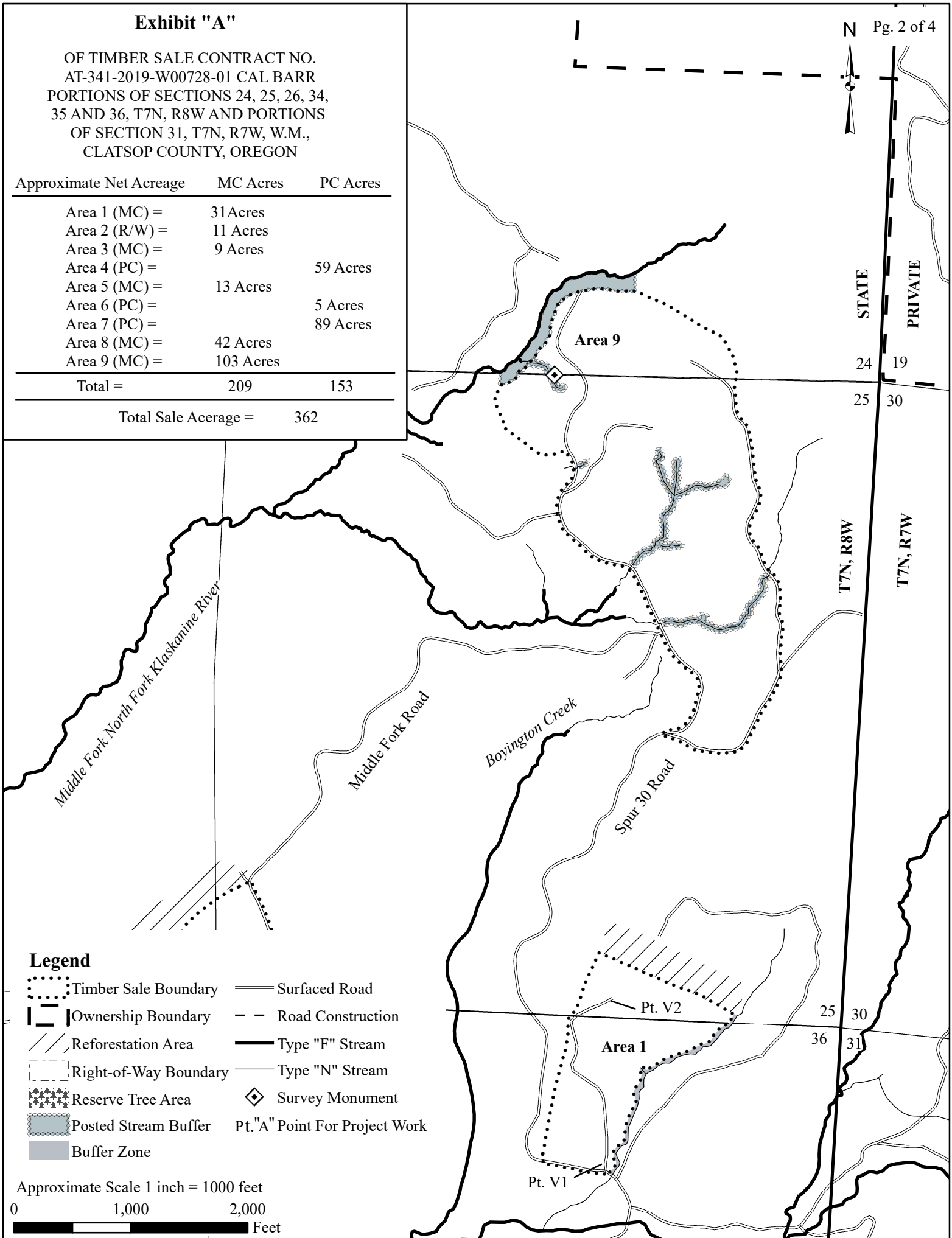
- ⊕ Registered Water Use Site
- ⊗ Quarry
- Ⓢ Stockpile
- Gates
- Paved Road
- Surfaced Road
- Timber Sale Area
- ▬ Ownership Boundary



# Exhibit "A"

OF TIMBER SALE CONTRACT NO.  
 AT-341-2019-W00728-01 CAL BARR  
 PORTIONS OF SECTIONS 24, 25, 26, 34,  
 35 AND 36, T7N, R8W AND PORTIONS  
 OF SECTION 31, T7N, R7W, W.M.,  
 CLATSOP COUNTY, OREGON

Approximate Net Acreage	MC Acres	PC Acres
Area 1 (MC) =	31 Acres	
Area 2 (R/W) =	11 Acres	
Area 3 (MC) =	9 Acres	
Area 4 (PC) =		59 Acres
Area 5 (MC) =	13 Acres	
Area 6 (PC) =		5 Acres
Area 7 (PC) =		89 Acres
Area 8 (MC) =	42 Acres	
Area 9 (MC) =	103 Acres	
<b>Total =</b>	<b>209</b>	<b>153</b>
<b>Total Sale Acreage =</b>		<b>362</b>



## Legend

- Timber Sale Boundary
- Surfaced Road
- Ownership Boundary
- Road Construction
- Reforestation Area
- Type "F" Stream
- Right-of-Way Boundary
- Type "N" Stream
- Reserve Tree Area
- Survey Monument
- Posted Stream Buffer
- Pt. "A" Point For Project Work
- Buffer Zone

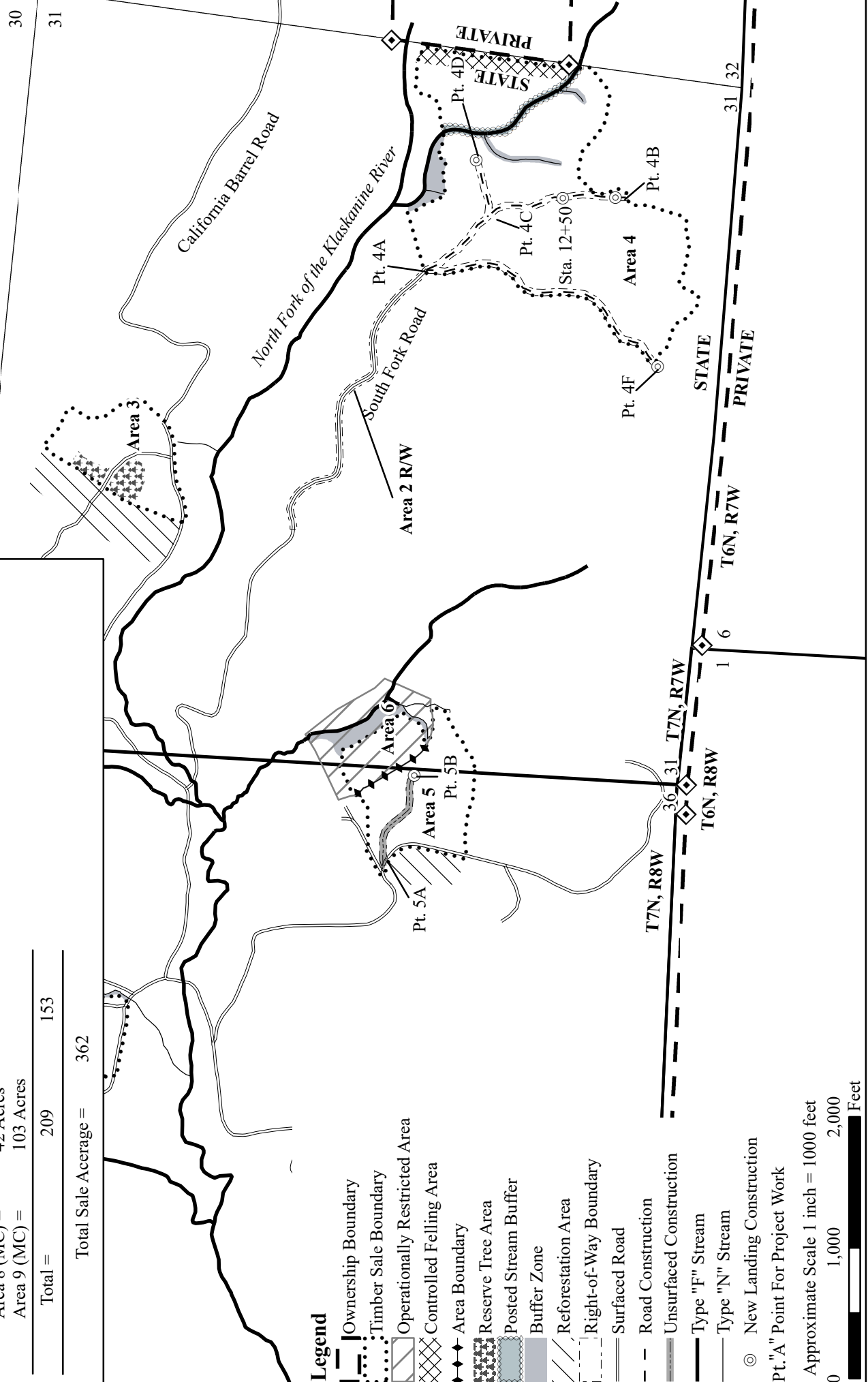
Approximate Scale 1 inch = 1000 feet  
 0 1,000 2,000 Feet



**Exhibit "A"**

OF TIMBER SALE CONTRACT NO.  
 AT-341-2019-W00728-01 CAL BARR  
 PORTIONS OF SECTIONS 24, 25, 26, 34,  
 35 AND 36, T7N, R8W AND PORTIONS  
 OF SECTION 31, T7N, R7W, W.M.,  
 CLATSOP COUNTY, OREGON

Approximate Net Acreage	MC Acres	PC Acres
Area 1 (MC) =	31 Acres	
Area 2 (R/W) =	11 Acres	
Area 3 (MC) =	9 Acres	
Area 4 (PC) =		59 Acres
Area 5 (MC) =	13 Acres	
Area 6 (PC) =		5 Acres
Area 7 (PC) =		89 Acres
Area 8 (MC) =	42 Acres	
Area 9 (MC) =	103 Acres	
<b>Total =</b>	<b>209</b>	<b>153</b>
<b>Total Sale Acreage =</b>		<b>362</b>



**Legend**

- Ownership Boundary
- Timber Sale Boundary
- Operationally Restricted Area
- Controlled Felling Area
- Area Boundary
- Reserve Tree Area
- Posted Stream Buffer
- Buffer Zone
- Reforestation Area
- Right-of-Way Boundary
- Surfaced Road
- Road Construction
- Unsurfaced Construction
- Type "F" Stream
- Type "N" Stream
- New Landing Construction
- Pt. "A" Point For Project Work

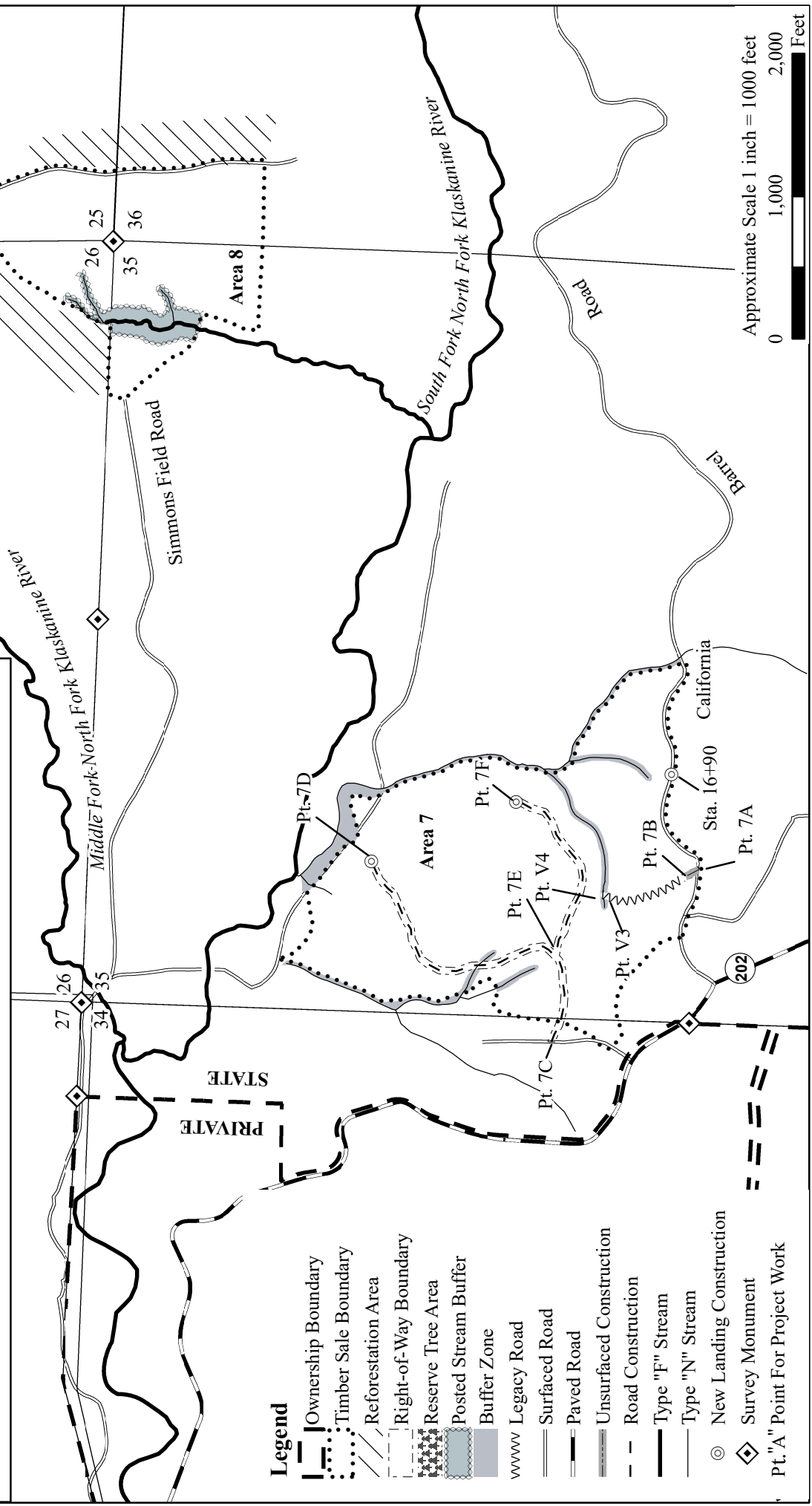
Approximate Scale 1 inch = 1000 feet  
 0 1,000 2,000 Feet

**Exhibit "A"**

OF TIMBER SALE CONTRACT NO.  
 AT-341-2019-W00728-01 CAL BARR  
 PORTIONS OF SECTIONS 24, 25, 26, 34,  
 35 AND 36, T7N, R8W AND PORTIONS  
 OF SECTION 31, T7N, R7W, W.M.,  
 CLATSOP COUNTY, OREGON

Approximate Net Acreage	MC Acres	PC Acres
Area 1 (MC) =	31 Acres	
Area 2 (R/W) =	11 Acres	
Area 3 (MC) =	9 Acres	
Area 4 (PC) =		59 Acres
Area 5 (MC) =	13 Acres	
Area 6 (PC) =		5 Acres
Area 7 (PC) =	42 Acres	89 Acres
Area 8 (MC) =	103 Acres	
<b>Total =</b>	<b>209</b>	<b>153</b>

Total Sale Acreage = 362



Approximate Scale 1 inch = 1000 feet  
 0 1,000 2,000 Feet