

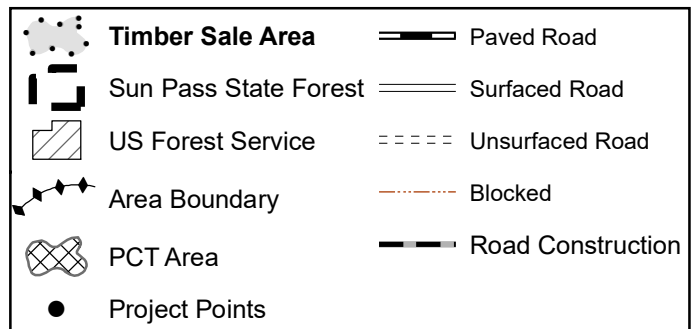
## EXHIBIT "A"

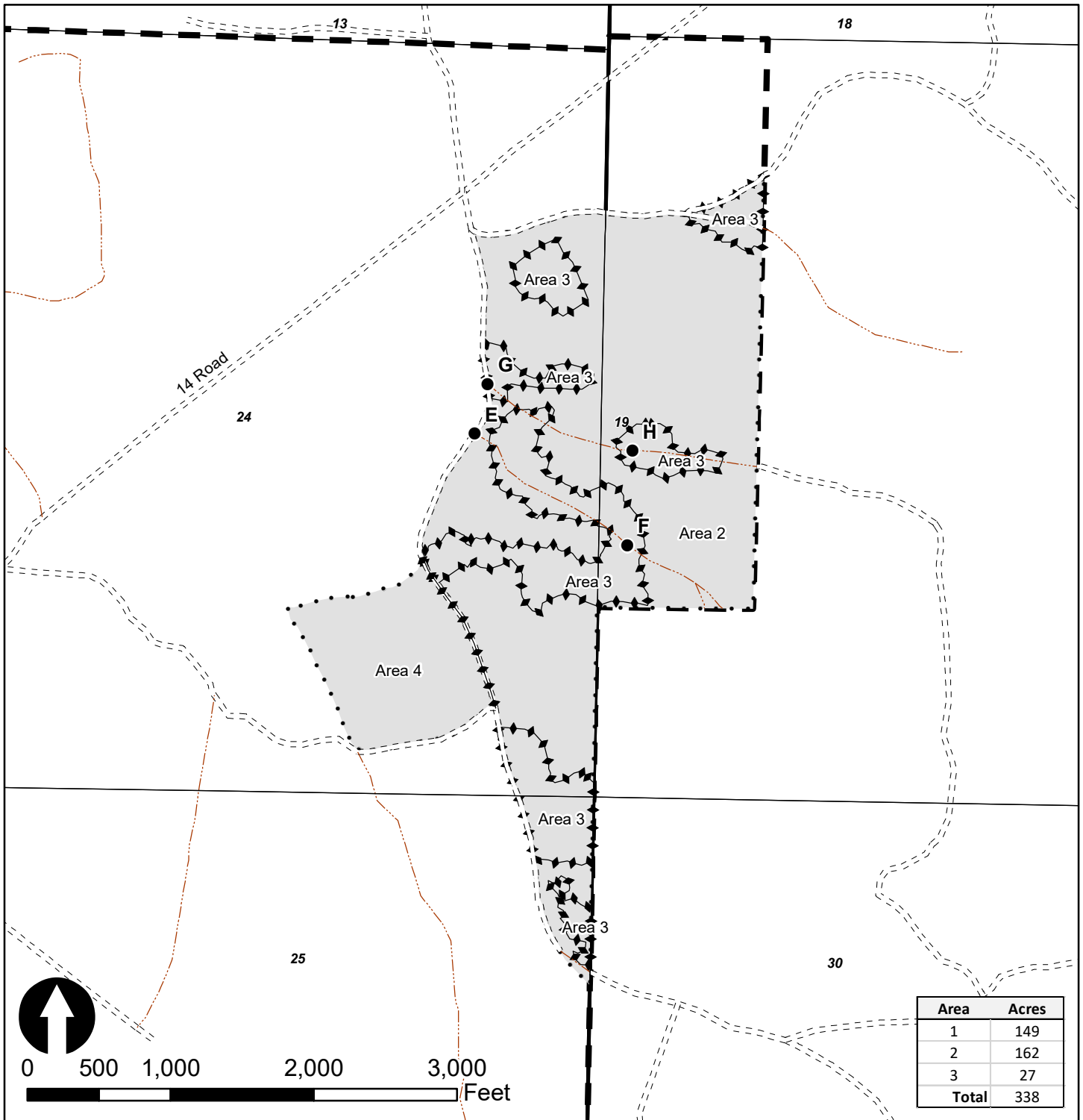
Of Timber Sale Contract  
KL-341-2019-W00513-01

Manzanita Woman

Portions of Section 19, T32S, R7E,  
Portions of Sections 24 and 25,  
T32S, R7.5E, Portions of Sections  
13 and 24, T33S, R7.5E, Willamette  
Meridian, Klamath County, Oregon  
338 acres

Created: May 16, 2018, KLD GIS





## EXHIBIT "A"

Of Timber Sale Contract

KL-341-2019-W00513-01

Manzanita Woman

Portions of Section 19, T32S, R7E,

Portions of Sections 24 and 25,

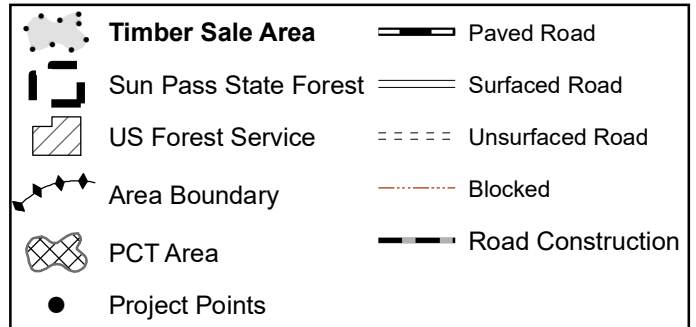
T32S, R7.5E, Portions of Sections

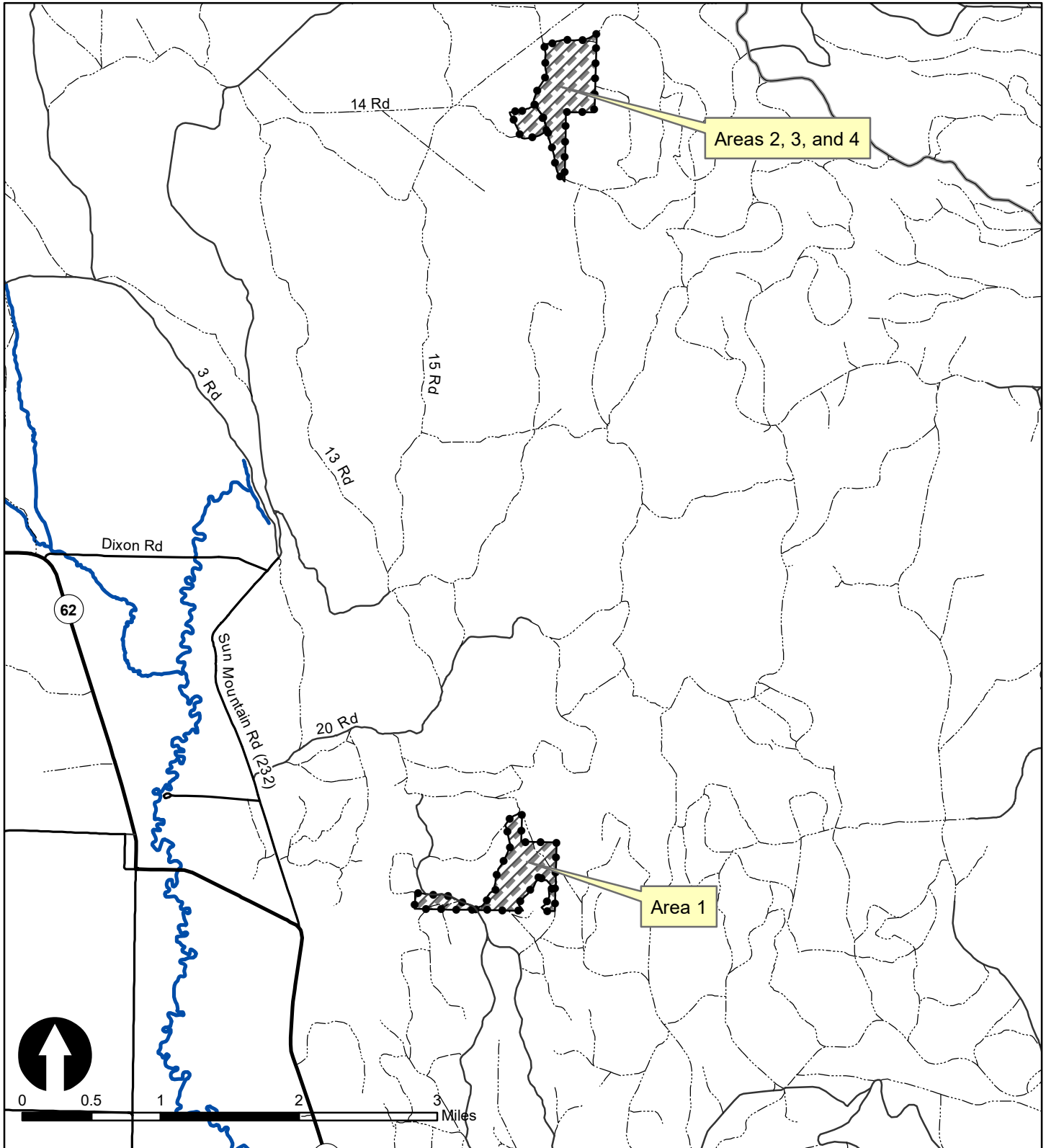
13 and 24, T33S, R7.5E, Willamette

Meridian, Klamath County, Oregon

338 acres

Created: May 16, 2018, KLD GIS



**EXHIBIT "A"**

Vicinity Map  
 Of Timber Sale Contract  
 KL-341-2019-W00513-01  
 Manzanita Woman  
 Portions of Section 19, T32S, R7E,  
 Portions of Sections 24 and 25,  
 T32S, R7.5E, Portions of Sections  
 13 and 24, T33S, R7.5E, Willamette  
 Meridian, Klamath County, Oregon

	<b>Manzanita Woman Sale Area</b>		State highway
	Sun Pass State Forest, Board of Forestry		Paved Road
	Sun Pass State Forest, Common School Lands		Mainline Road
	US Forest Service		All Weather Road
			Unsurfaced Road