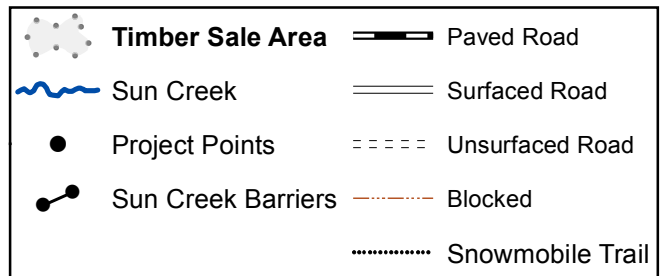


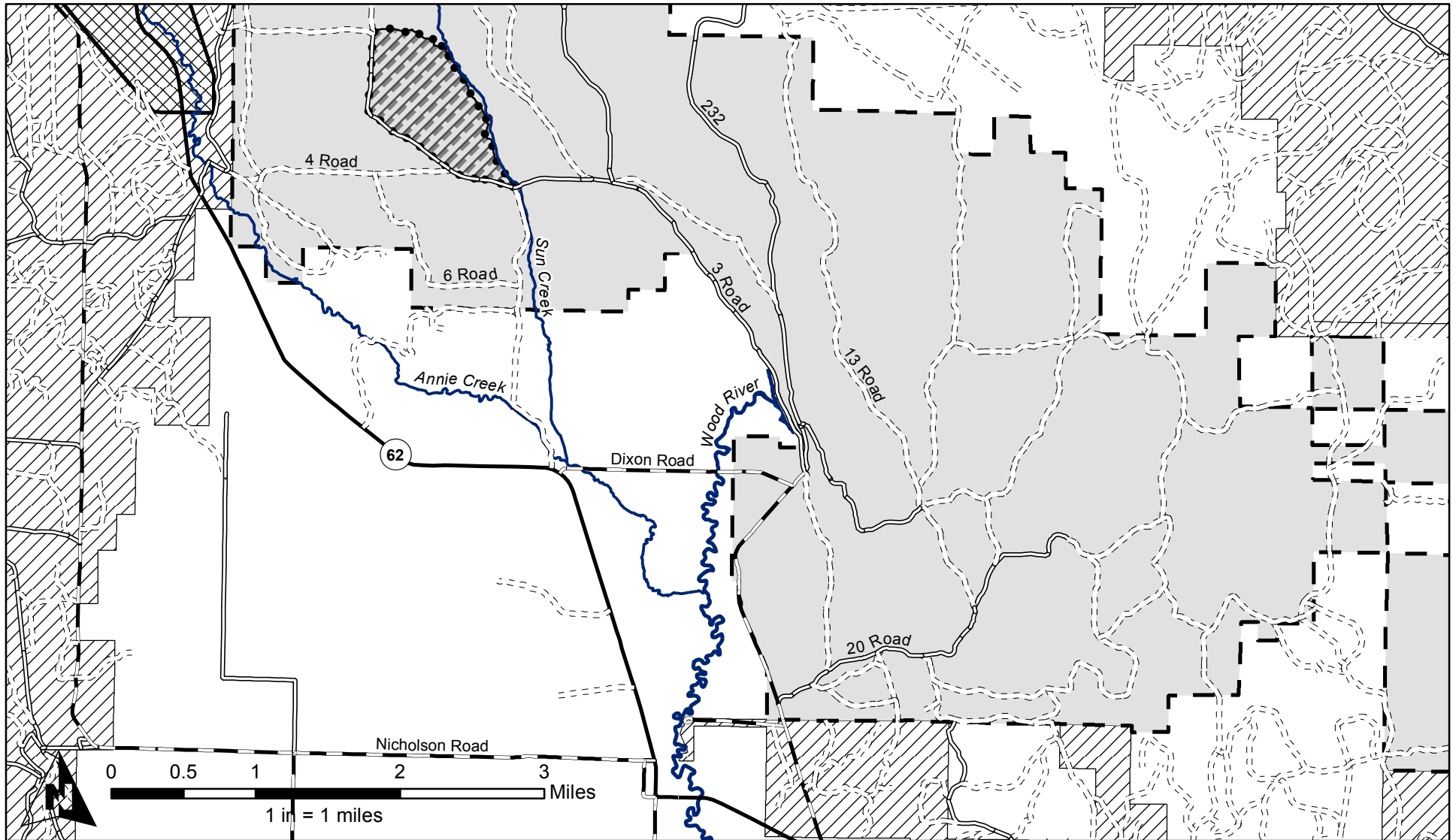
"STEWARDSHIP IN FORESTRY"

EXHIBIT "A"

Of Timber Sale Contract
KL-341-2019-W00511-01
Final Straw
Portions of Section 19, 20, 29, 30 and 32,
T32S, R7.5E, Willamette Meridain,
Klamath County, Oregon

Approximately 376 acres





"STEWARDSHIP IN FORESTRY"

EXHIBIT "A" VICINITY MAP
 OF TIMBER SALE CONTRACT
 KL-341-2019-W00511-01
 FINAL STRAW
 LOCATED IN PORTIONS OF
 SECTIONS 19, 20, 29, 30,
 AND 32, T32S, R71/2E, W.M.,
 KLAMATH COUNTY, OREGON

