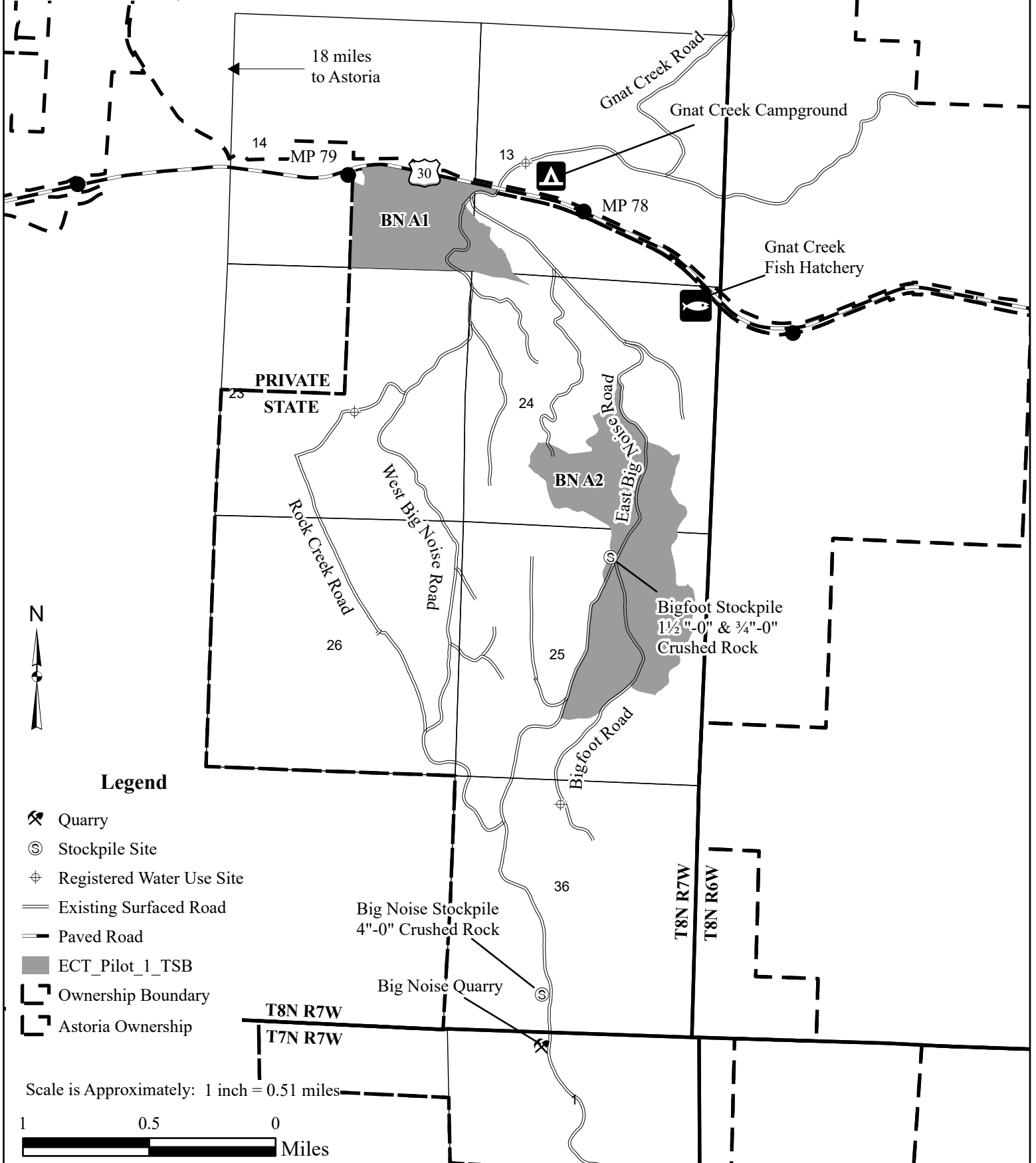


EXHIBIT A VICINITY MAP

OF TIMBER SALE CONTRACT
NO. 341-19-43 THROUGH 341-19-47
ECT PILOT 1

PORTIONS OF SECTIONS 13, 14, 24, AND 25, T8N, R7W;
AND PORTIONS OF SECTIONS 17, 26, AND 27, T6N, R6W,
W.M., CLATSOP COUNTY OREGON

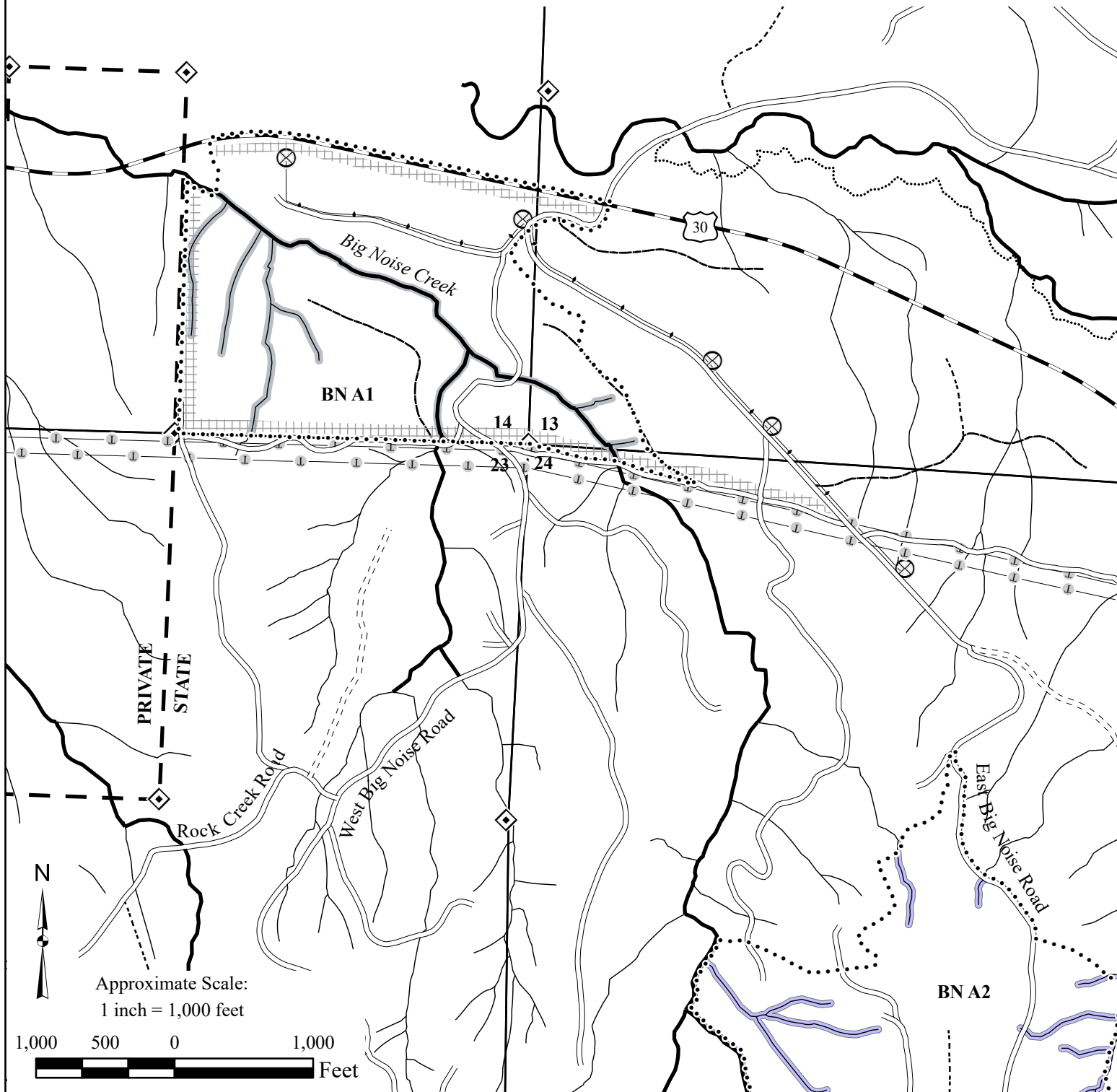


Legend

- Timber Sale Boundary
- Paved Road
- Surfaced Road
- === Unsurfaced Road
- Skid Road
- ⊕ Overhead Transmission Line
- ◇ Survey Monument
- Ownership
- Underground Utility Line
- Fish Stream
- Nonfish Stream
- Unknown Stream
- ⋯ Gnat Creek Trail
- ▣ Controlled Felling
- Non-posted Buffer
- ⊗ Domestic Well

EXHIBIT A
 OF TIMBER SALE CONTRACT
 NO. 341-19-43 THROUGH 341-19-47
 ECT PILOT 1
 PORTIONS OF SECTIONS 13, 14, 24, AND 25, T8N, R7W;
 AND PORTIONS OF SECTIONS 17, 26, AND 27, T6N, R6W,
 W.M., CLATSOP COUNTY OREGON

| APPROXIMATE NET ACRES | |
|-----------------------|------------|
| AREA | PC ACRES |
| BN A1 | 111 |
| BN A2 | 233 |
| NA1 | 157 |
| WS A1 | 127 |
| WS A2 | 90 |
| TOTAL | 718 |



Legend

- Timber Sale Boundary
- Paved Road
- Surfaced Road
- === Unsurfaced Road
- Skid Road
- Overhead Transmission Line
- ◆ Survey Monument
- Ownership
- Underground Utility Line
- Fish Stream
- Nonfish Stream
- Unknown Stream
- Gnat Creek Trail
- Controlled Felling
- Non-posted Buffer
- ⊗ Domestic Well

EXHIBIT A
 OF TIMBER SALE CONTRACT
 NO. 341-19-43 THROUGH 341-19-47
 ECT PILOT 1
 PORTIONS OF SECTIONS 13, 14, 24, AND 25, T8N, R7W;
 AND PORTIONS OF SECTIONS 17, 26, AND 27, T6N, R6W,
 W.M., CLATSOP COUNTY OREGON

| APPROXIMATE NET ACRES | |
|-----------------------|------------|
| AREA | PC ACRES |
| BN A1 | 111 |
| BN A2 | 233 |
| NA1 | 157 |
| WS A1 | 127 |
| WS A2 | 90 |
| TOTAL | 718 |

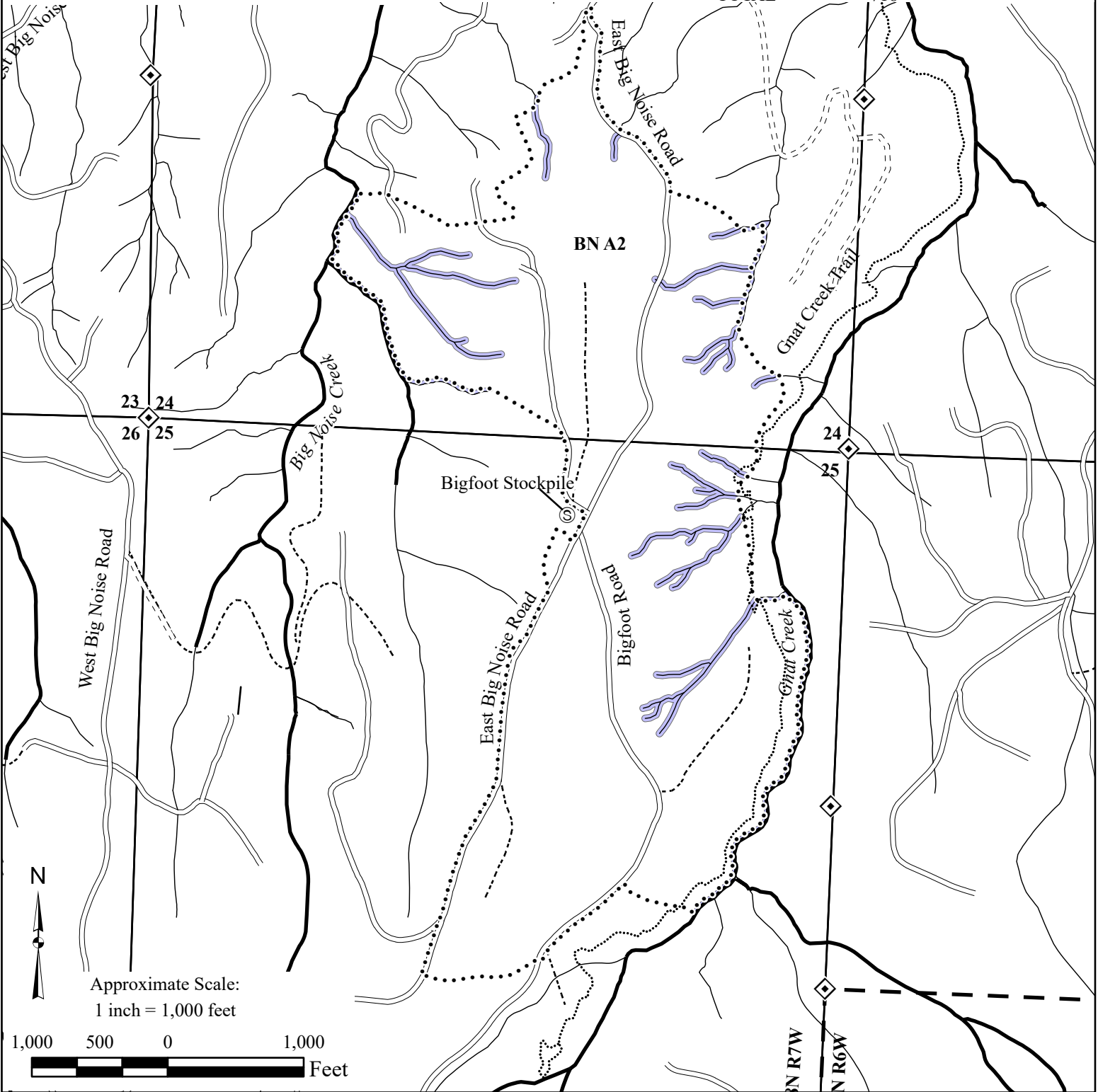


EXHIBIT A VICINITY MAP

OF TIMBER SALE CONTRACT
NO. 341-19-43 THROUGH 341-19-47
ECT PILOT 1
PORTIONS OF SECTIONS 13, 14, 24, AND 25, T8N, R7W;
AND PORTIONS OF SECTIONS 17, 26, AND 27, T6N, R6W,
W.M., CLATSOP COUNTY OREGON

Legend

- Quarry
- Stockpile
- Ownership
- Paved Road
- Surfaced Road
- Section_Vicinity
- Section
- Sale Area

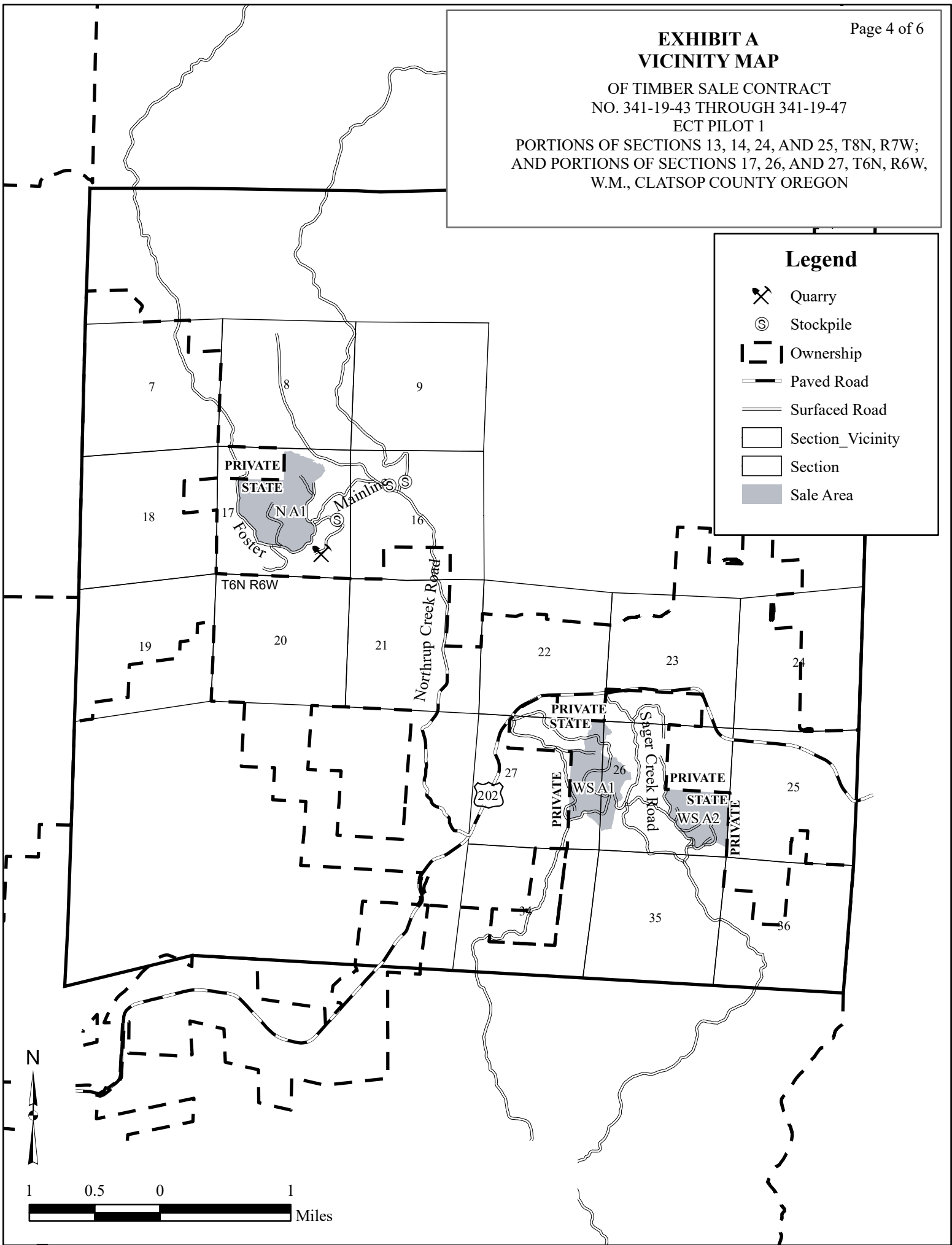













EXHIBIT A
 OF TIMBER SALE CONTRACT
 NO. 341-19-43 THROUGH 341-19-47
 ECT PILOT 1
 PORTIONS OF SECTIONS 13, 14, 24, AND 25, T8N, R7W;
 AND PORTIONS OF SECTIONS 17, 26, AND 27, T6N, R6W,
 W.M., CLATSOP COUNTY OREGON

| APPROXIMATE NET ACRES | |
|-----------------------|------------|
| AREA | PC ACRES |
| BN A1 | 111 |
| BN A2 | 233 |
| NA 1 | 157 |
| WS A1 | 127 |
| WS A2 | 90 |
| TOTAL | 718 |

Legend

-  Paved Road
-  Surfaced Road
-  Timber Sale Boundary
-  Controlled Felling
-  Survey Monument
-  Ownership
-  Fish Stream
-  Nonfish Stream
-  Non Posted Buffer
-  Horse Camp Trail
-  Section Line

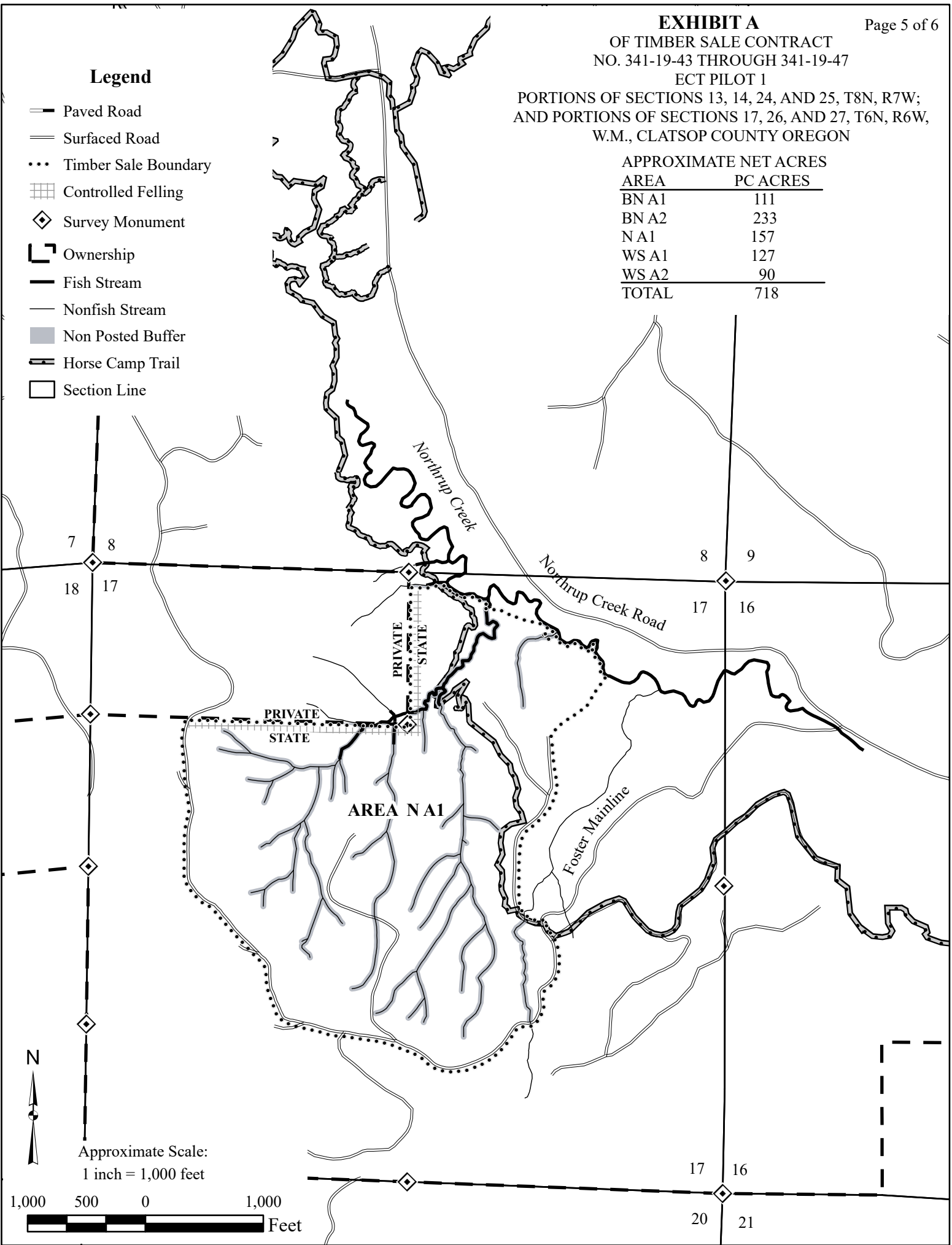


EXHIBIT A

OF TIMBER SALE CONTRACT
 NO. 341-19-43 THROUGH 341-19-47
 ECT PILOT 1
 PORTIONS OF SECTIONS 13, 14, 24, AND 25, T8N, R7W;
 AND PORTIONS OF SECTIONS 17, 26, AND 27, T6N, R6W,
 W.M., CLATSOP COUNTY OREGON

| APPROXIMATE NET ACRES | |
|-----------------------|------------|
| AREA | PC ACRES |
| BN A1 | 111 |
| BN A2 | 233 |
| N A1 | 157 |
| WS A1 | 127 |
| WS A2 | 90 |
| TOTAL | 718 |

Legend

- Timber Sale Boundary
- Paved Road
- Surfaced Road
- Unsurfaced Road
- Type F Stream
- Type N Stream
- Unknown Stream
- Controlled Felling
- Non Posted Buffer
- Survey_Monument
- Section
- Ownership

