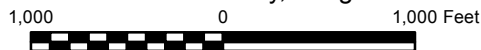


EXHIBIT A
Timber Sale Contract No. 341-19-36
THOR'S SUMMIT
 Portions of Sections 29, 31, 32, T2S, R7W,
 Portions of Sections 5, 6, T3S, R7W,
 Portions of Section 1, T3S, R8W, W.M.,
 Tillamook County, Oregon



Area	Type of Operation	Acres	
		Gross	Net
1	Modified Clearcut	96	65
2	Modified Clearcut	125	103
3	Modified Clearcut	79	56
4	Modified Clearcut	123	106
5	Modified Clearcut	135	116
Total		558	446

Tillamook District GIS
 6/18/2018
 This product is for informational use and may not have been prepared or suitable for legal, engineering, or surveying purposes.

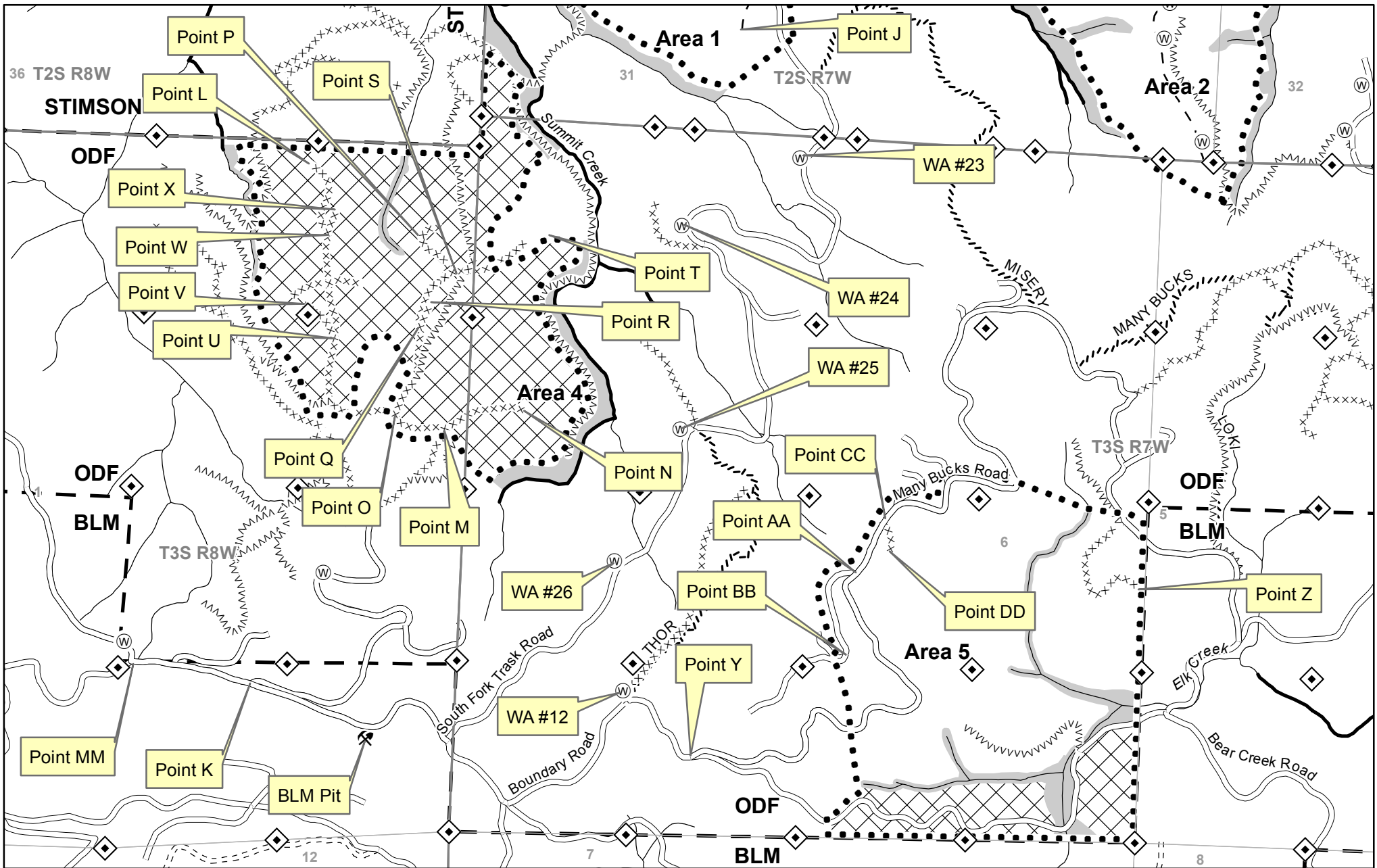
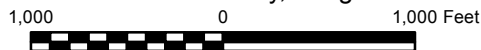


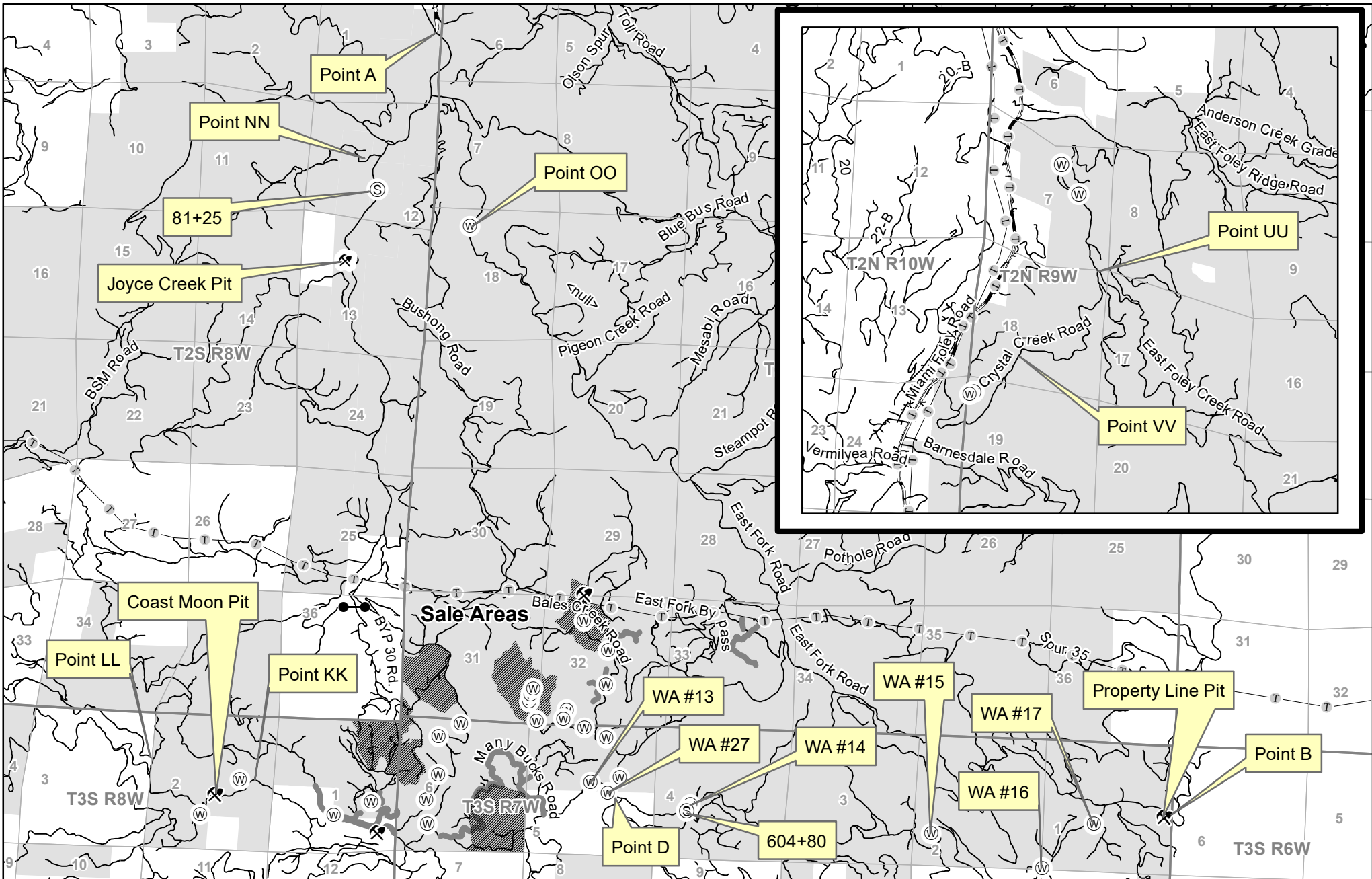
EXHIBIT A
Timber Sale Contract No. 341-19-36
THOR'S SUMMIT
 Portions of Sections 29, 31, 32, T2S, R7W,
 Portions of Sections 5, 6, T3S, R7W,
 Portions of Section 1, T3S, R8W, W.M.,
 Tillamook County, Oregon



- Rock source
- Stock pile
- Waste area
- Bridge
- Gate
- Survey corner
- Dispersed Campsite
- Buffer
- Green tree retention area
- Area boundary
- Sale boundary
- Ownership boundary
- Fish stream
- Non-fish stream
- Seasonal Restriction Area
- Unsurfaced road
- Surfaced road
- Paved road
- Abandoned road
- Blocked road
- Road construction
- OHV trail
- Non-motorized trail
- Transmission line
- Railroad

Area	Type of Operation	Acres	
		Gross	Net
1	Modified Clearcut	96	65
2	Modified Clearcut	125	103
3	Modified Clearcut	79	56
4	Modified Clearcut	123	106
5	Modified Clearcut	135	116
Total		558	446

Tillamook District GIS
 6/18/2018
 This product is for informational use and may not have been prepared or suitable for legal, engineering, or surveying purposes.



- | | | |
|-------------|-------------------|-------------------|
| Rock source | Major road | Brushing required |
| Stock pile | Other road | |
| Waste area | Transmission line | |
| Bridge | Railroad | |
| Gate | Timber sale | |
| | ODF ownership | |

EXHIBIT A - VICINITY MAP
 Timber Sale Contract No. 341-19-36
 THOR'S SUMMIT
 Portions of Sections 29, 31, 32, T2S, R7W,
 Portions of Sections 5, 6, T3S, R7W,
 Portions of Section 1, T3S, R8W, W.M.,
 Tillamook County, Oregon



Tillamook District GIS
 6/27/2018
 This product is for informational use and may not have been prepared or suitable for legal, engineering, or surveying purposes.