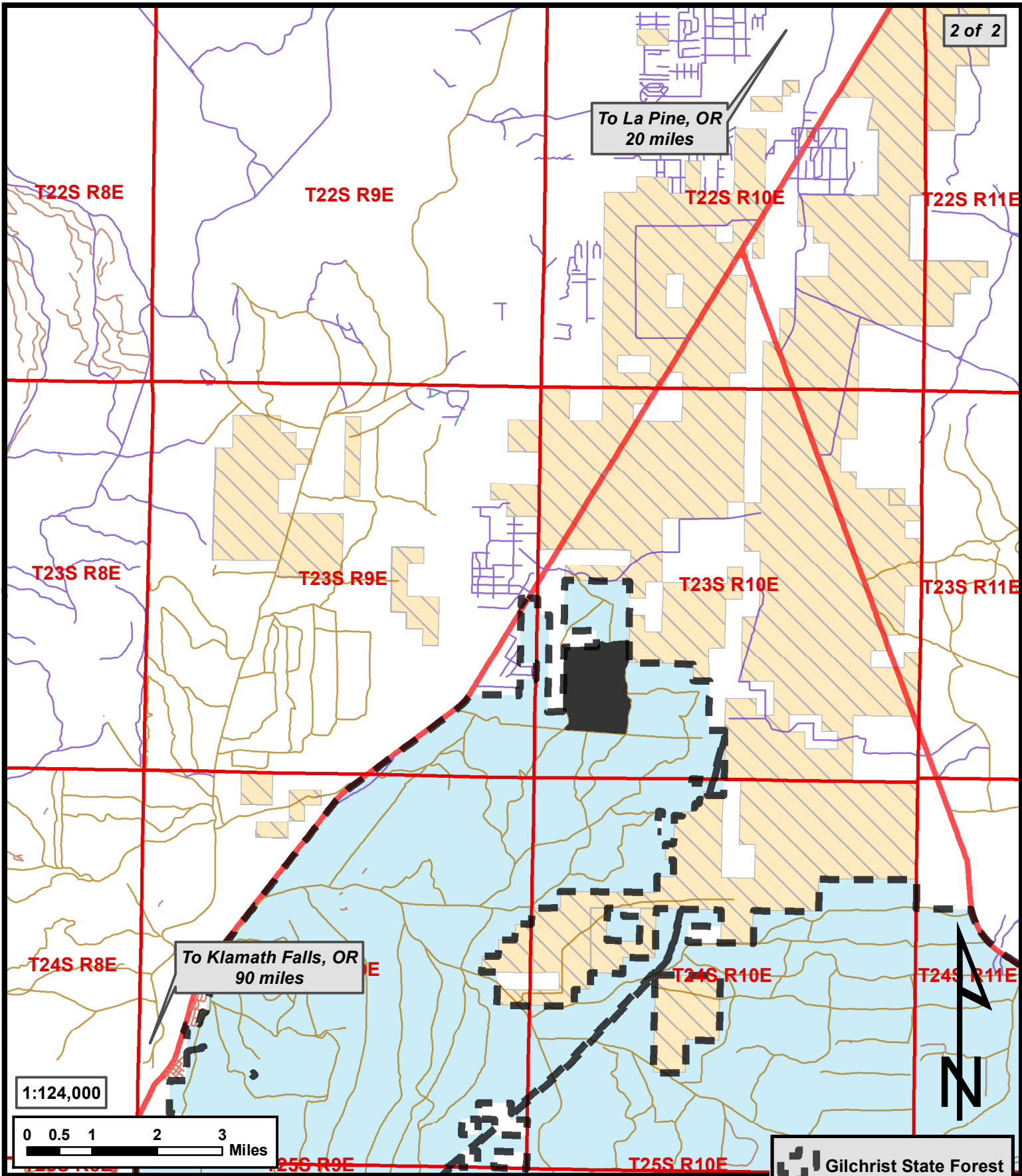


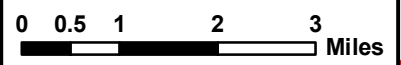
**Exhibit 'A'**  
 OF TIMBER SALE CONTRACT No. 341-18-96  
**BROKEN SPOKE CHIP SALE**  
 LOCATED IN PORTIONS OF SECTIONS 20, 29, 30, 31 AND 32,  
 T23S, R10E, W.M. KLAMATH COUNTY

Broken Spoke	
840	TOTAL acres
70	Low harvest Zone
116	15% optional acres
5929	Approx Harvest GT

- Gilchrist State Forest
- Broken Spoke
- Low Harvest Zone
- ODF
- BLM
- PV



1:124,000



- Gilchrist State Forest
- BrokenSpoke
- ODF
- BLM
- PV

**Exhibit 'A'**  
 OF TIMBER SALE CONTRACT No. 341-18-96  
**BROKEN SPOKE CHIP SALE - VICINITY**  
 LOCATED IN PORTIONS OF SECTIONS 20, 29, 30, 31 AND 32,  
 T23S, R10E, W.M. KLAMATH COUNTY