




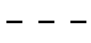



Vicinity Map

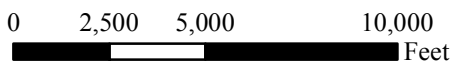
OF TIMBER SALE CONTRACT NO. 341-18-46
LONG WALKER
PORTIONS OF SECTIONS 8, 9,
16, 17, AND 25, T5N, R6W, W.M.,
CLATSOP COUNTY, OREGON



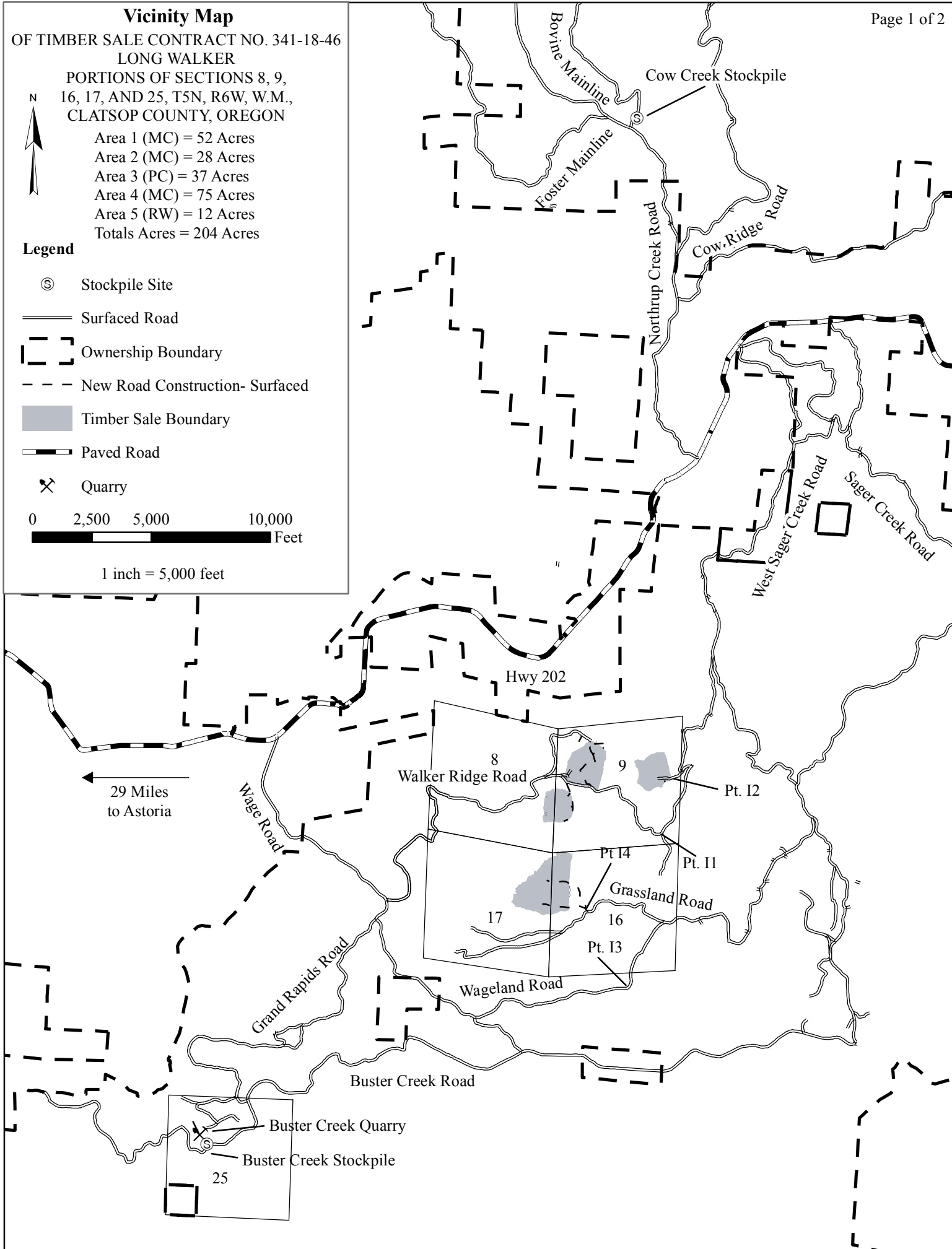
- Area 1 (MC) = 52 Acres
- Area 2 (MC) = 28 Acres
- Area 3 (PC) = 37 Acres
- Area 4 (MC) = 75 Acres
- Area 5 (RW) = 12 Acres
- Totals Acres = 204 Acres

Legend

-  Stockpile Site
-  Surfaced Road
-  Ownership Boundary
-  New Road Construction- Surfaced
-  Timber Sale Boundary
-  Paved Road
-  Quarry



1 inch = 5,000 feet



← 29 Miles to Astoria

Exhibit "A"

OF TIMBER SALE CONTRACT NO. 341-18-46
LONG WALKER

PORTIONS OF SECTIONS 8, 9,
16, 17, AND 25 T5N, R6W, W.M.,
CLATSOP COUNTY, OREGON

Area 1 (MC) = 52 Acres
Area 2 (MC) = 28 Acres
Area 3 (PC) = 37 Acres
Area 4 (MC) = 75 Acres
Area 5 (RW) = 12 Acres
Totals Acres = 204 Acres

Legend

- ⊙ Landing Construction
- Type F Stream
- Type N Stream
- Ownership Boundary
- ⋯ Timber Sale Boundary
- Surfaced Road
- - - Road Construction- Surfaced
- Right-of-Way Boundary
- ▨ Posted Streams Buffer
- Non Posted Buffer
- ◆ Survey Monument

