

EXHIBIT A

Page 1 of 2

FOR TIMBER SALE CONTRACT 341-18 -24
SUNDAY PASSAGE
PORTIONS OF SECTIONS 11, 12, 13, 14, 23, & 24,
T1S, R6W, W.M.,
WASHINGTON COUNTY, OREGON

Forest Grove District GIS

July, 2017

This product is for informational use and may not be
suitable for legal, engineering, or surveying purposes.

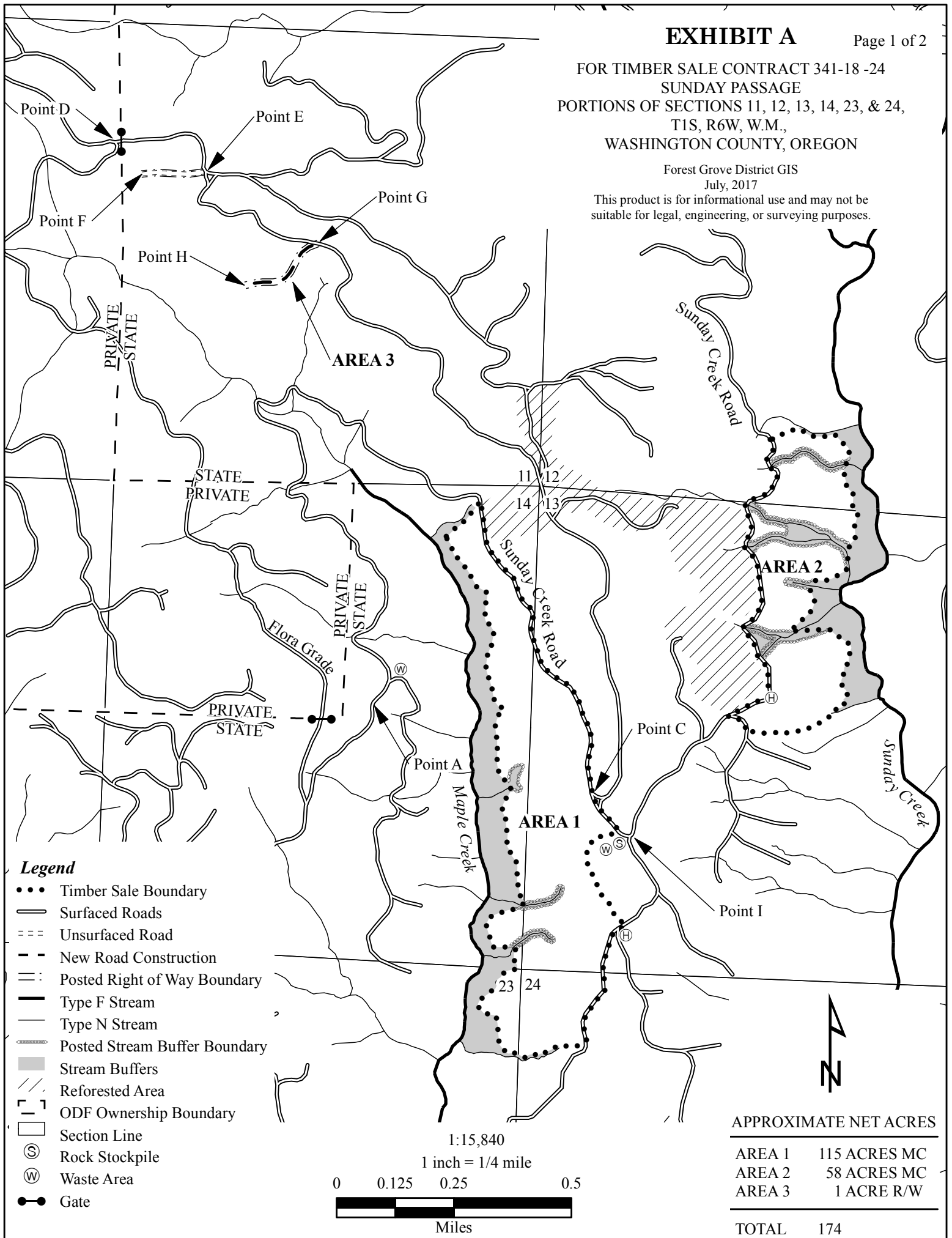


EXHIBIT A

Page 2 of 2

VICINITY MAP
FOR TIMBER SALE CONTRACT 341-18 -24
SUNDAY PASSAGE
PORTIONS OF SECTIONS 11, 12, 13, 14, 23, & 24,
T1S, R6W, W.M.,
WASHINGTON COUNTY, OREGON

