

Legend

- Timber Sale Boundary
- Surfaced Roads
- - - New Road Construction
- Type F Stream
- Type N Stream
- Stream Buffers
- Stream Buffer Boundary
- Reforested Area
- Green Tree Retention Area
- Green Tree Retention Area Boundary
- Section Line
- (W) Waste Area
- (H) Helispot
- *** Road Blockage

EXHIBIT A

FOR TIMBER SALE CONTRACT 341-18-19
HIGH ON THE HOG
PORTIONS OF SECTIONS 20, 21, 28, & 29
T2N, R6W, W.M.,
TILLAMOOK COUNTY, OREGON

Forest Grove District GIS

September, 2017

This product is for informational use and may not be
suitable for legal, engineering, or surveying purposes.

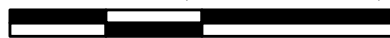


APPROXIMATE NET ACRES = 112

1:12,000

1 inch = 1000 feet

0 500 1,000 2,000



Feet

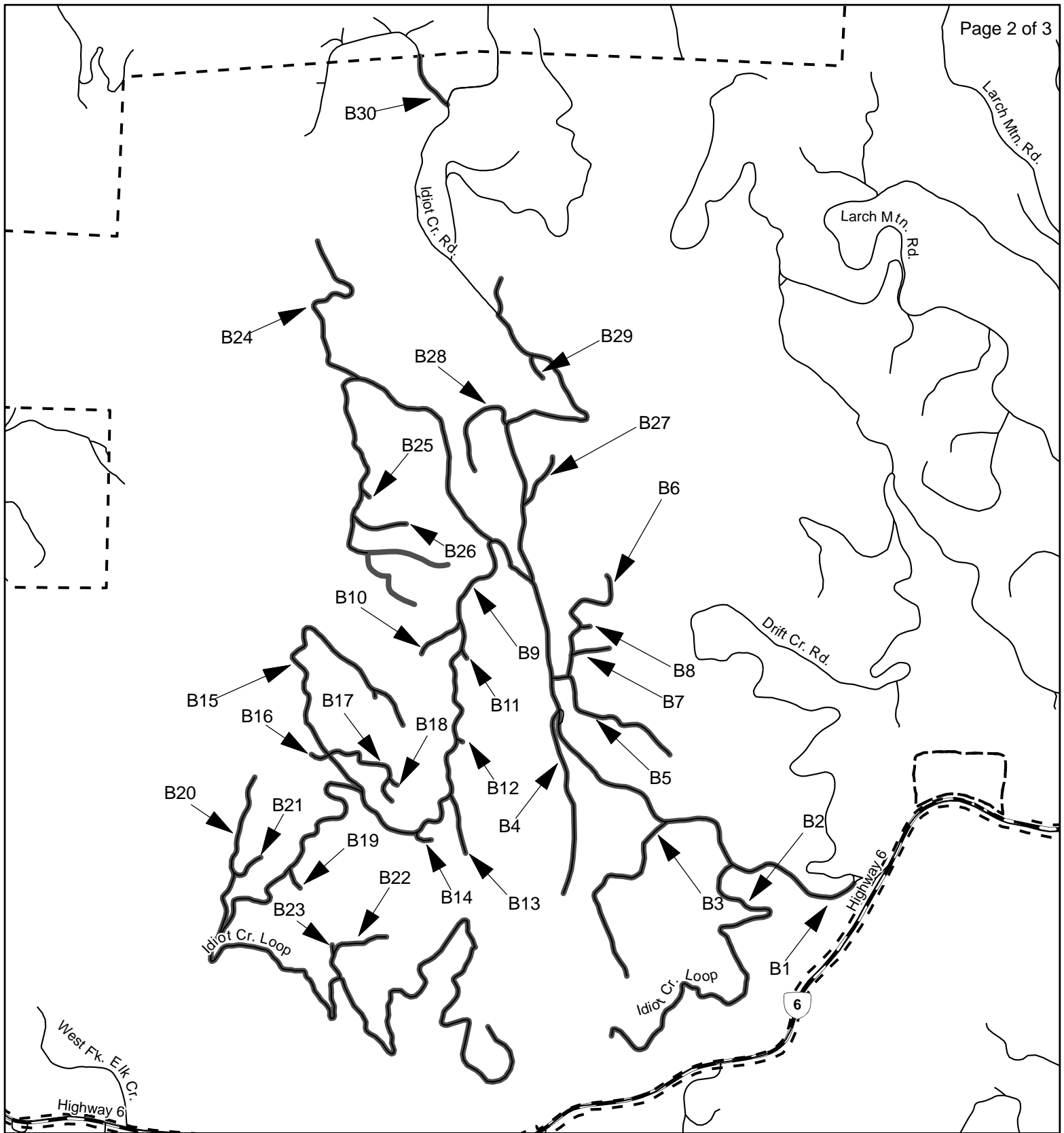


EXHIBIT A

FOR TIMBER SALE CONTRACT # 341-18-19

HIGH ON THE HOG

PROJECT NO. 4 - ROAD BRUSHING

PORTIONS OF SECTIONS 20, 21, 28, 29, 31, 32, 33 AND 34 T2N, R6W, W.M.

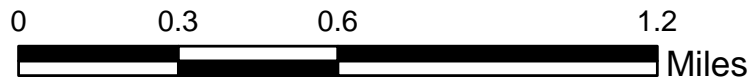
TILLAMOOK COUNTY, OREGON

Legend

— Roads

— High on the Hog Brushing

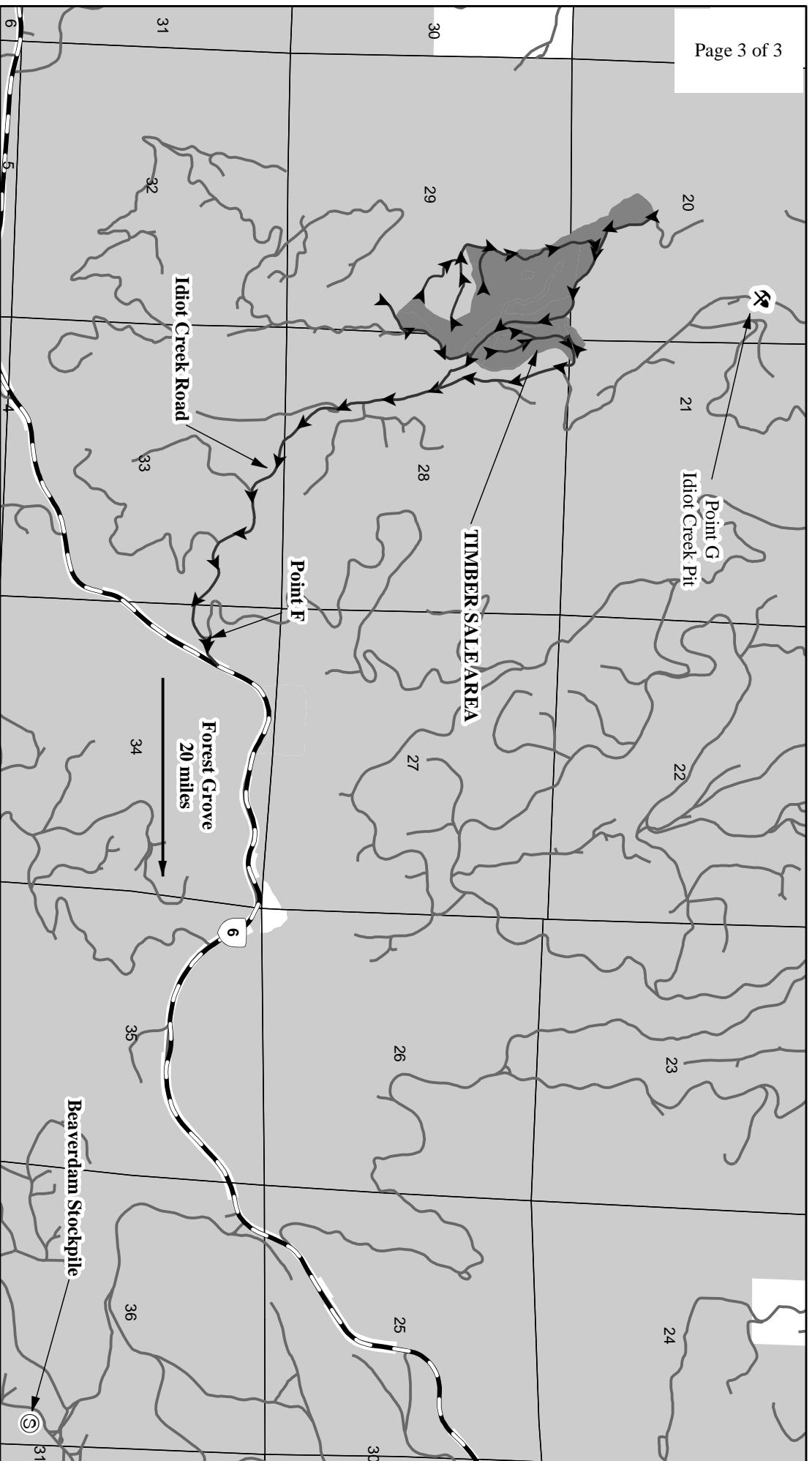
- - - ODF Ownership Boundary



Forest Grove District GIS

November, 2013

This product is for informational use and
may not be suitable for legal, engineering,
or surveying purposes.



Legend

- Timber Sale Area
- Section Line
- Haul Route Road
- ODF Ownership
- Highways
- Rock Stockpile
- Surfaced Road
- Rock Pit

EXHIBIT A

VICINITY MAP
FOR TIMBER SALE CONTRACT 341-18 -19
HIGH ON THE HOG
PORTIONS OF SECTIONS 20, 21, 28, & 29
T2N, R6W, W.M.,
TILLAMOOK COUNTY, OREGON

Forest Grove District GIS
September, 2017
This product is for informational use and may not be
suitable for legal, engineering, or surveying purposes.



1:31,680
1 inch = 0.5 miles

