

121°53'30"W 121°53'00"W 121°52'30"W 121°52'00"W 121°51'30"W

43°53'0"N 43°50'0"N

35

EXHIBIT 'A'
of Timber Sale Contract No. KL-341-17-50
ROUGH DIAMOND
T28S, R7E, Section 3, W.M
Klamath County, Oregon

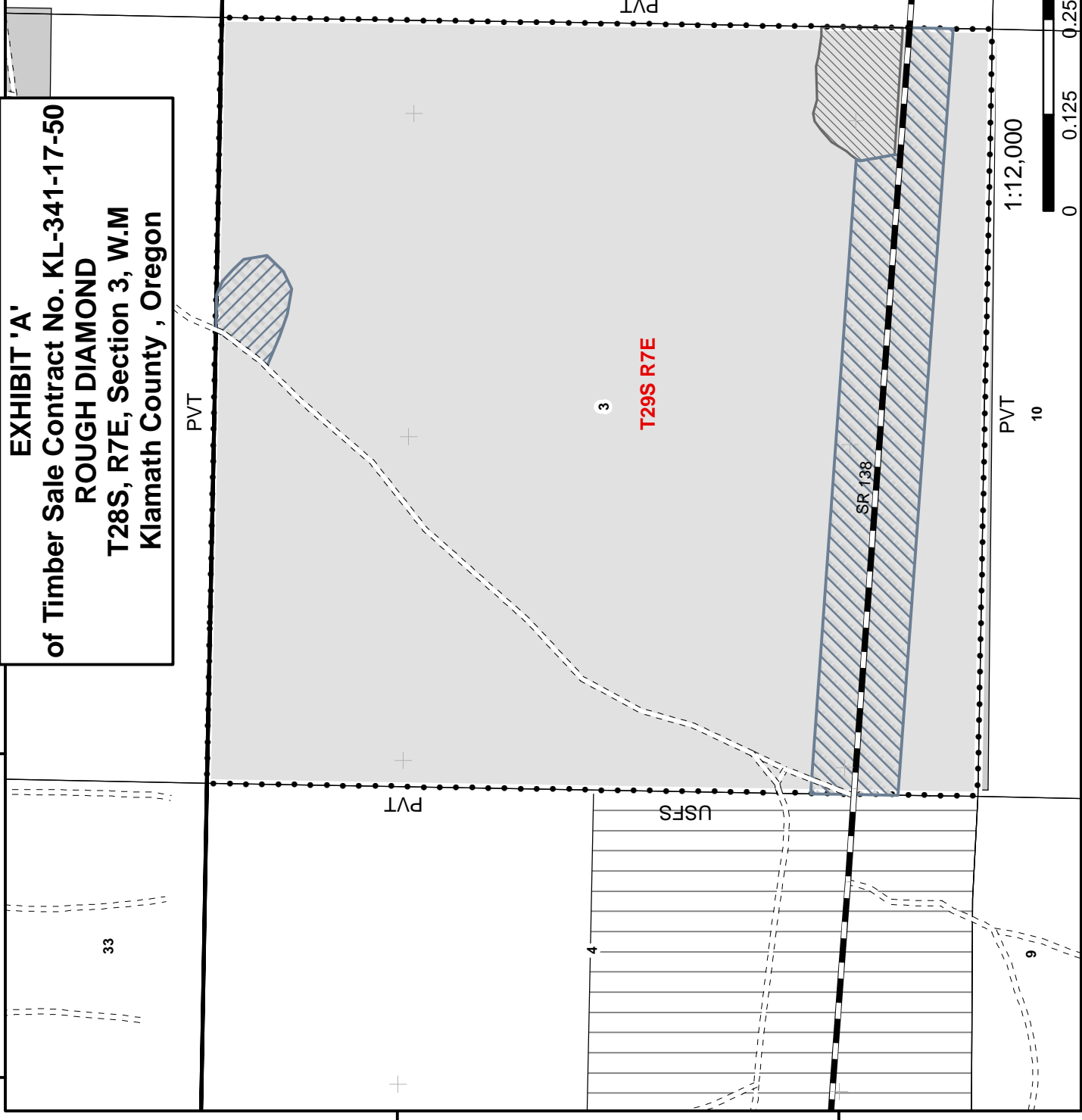
Legend

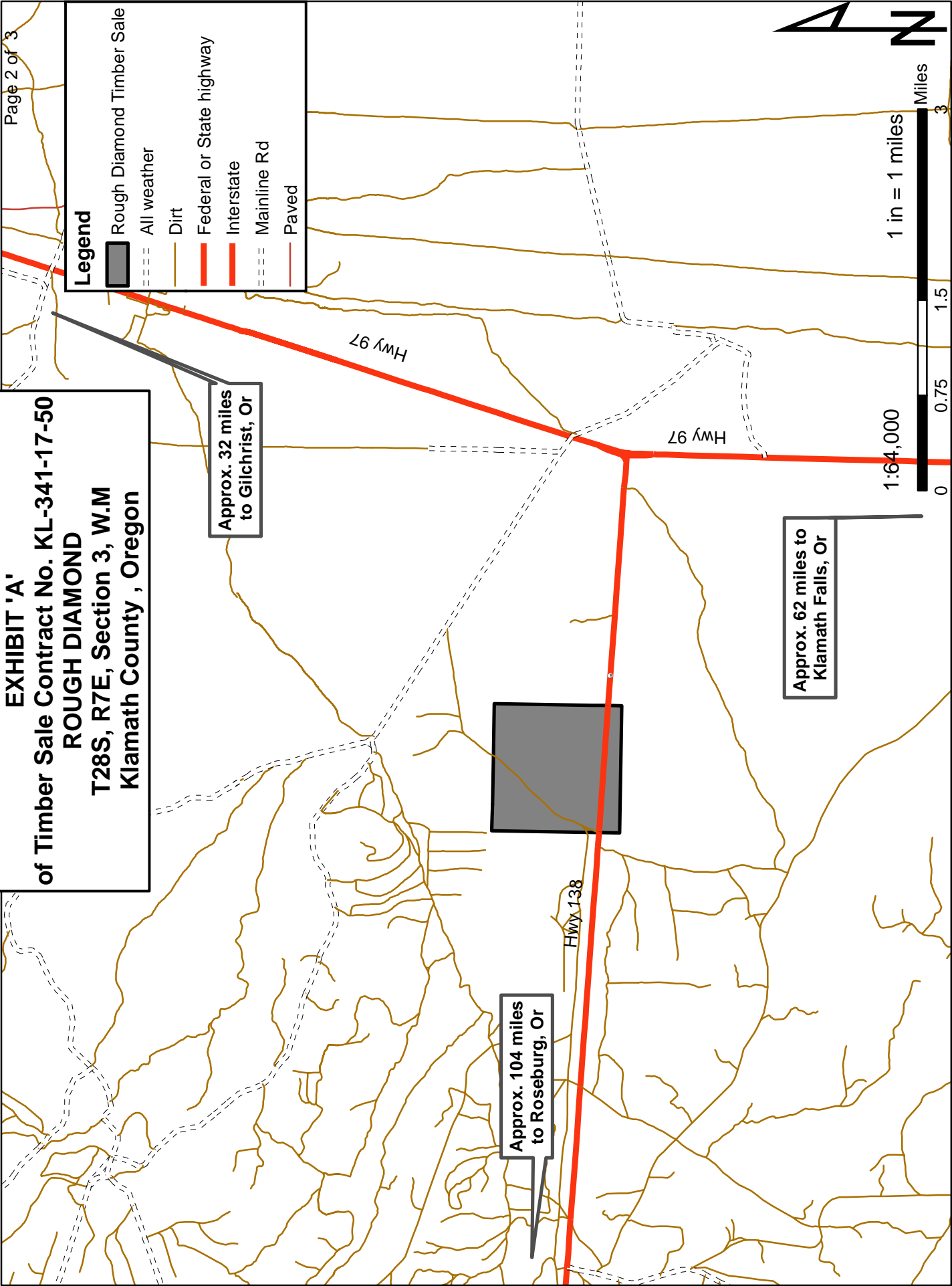
- Rough Diamond Timber Sale
- State Highway
- Unsurfaced Road
- Hwy138
- Camp Site
- Exclusion

Public Ownership

- ODF
- Private
- USFS

Sale Area	Harvest Type	Net Acres
1	Thin & Partial Cut	631
Total - 631 Acres		





This product is for informational purposes and may not have been prepared for, or suitable for, legal, engineering, or surveying purposes.

**EXHIBIT 'A' Project Points
of Timber Sale Contract No. KL-341-17-50
ROUGH DIAMOND
T28S, R7E, Section 3, W.M
Klamath County, Oregon**

33

Legend

- Rough Diamond Timber Sale
- Landings
- Road Improvement
- - Road Construction
- State Highway
- - - - Unsurfaced Road
- ▨ Hwy138
- ▨ Camp Site
- ▨ Exclusion

Public Ownership

- ODF
- Private
- ▨ USFS

2

Sale Area	Harvest Type	Net Acres
1	Thin & Partial Cut	631
Total - 631 Acres		

