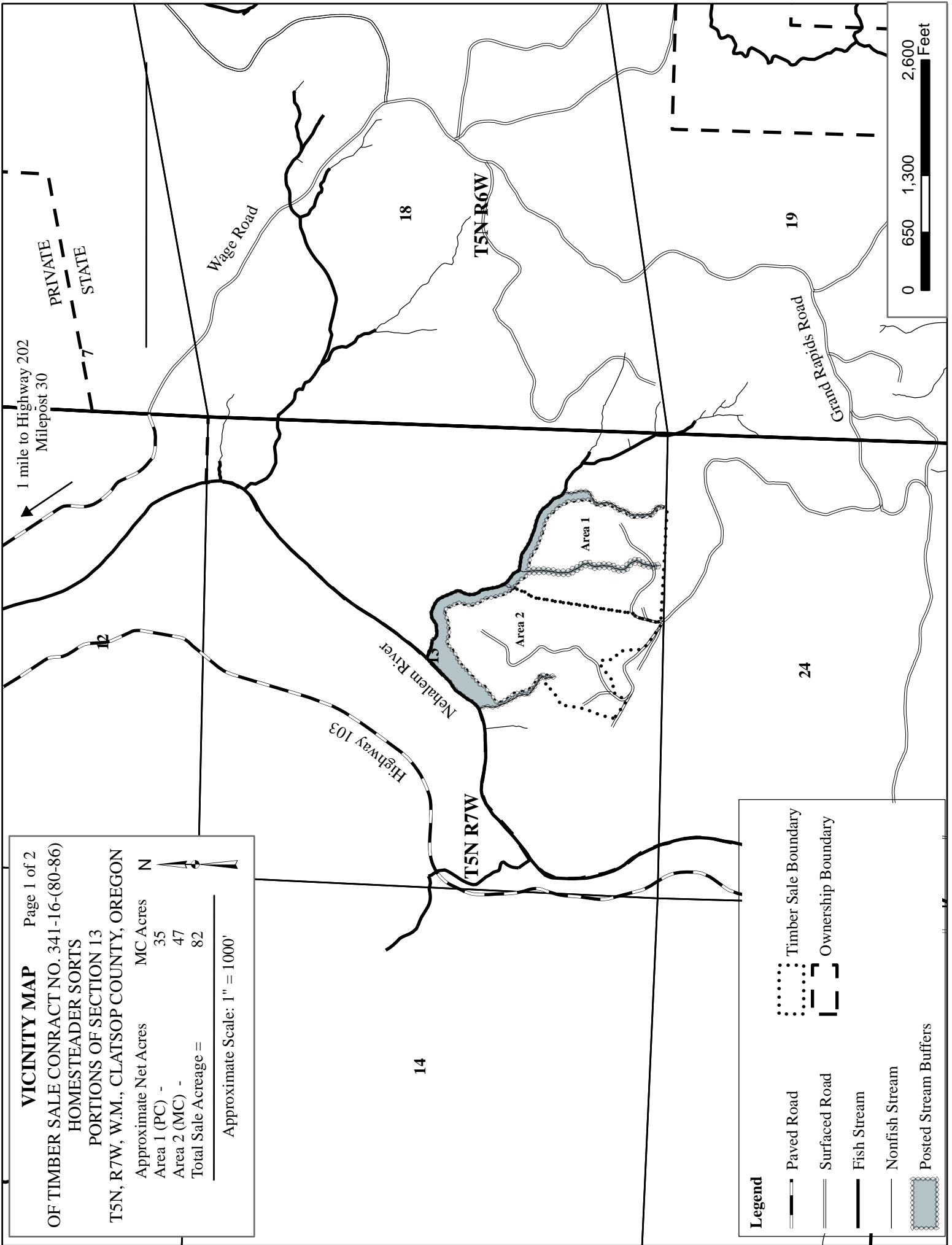


VICINITY MAP Page 1 of 2
 OF TIMBER SALE CONTRACT NO. 341-16-(80-86)
 HOMESTEADER SORTS
 PORTIONS OF SECTION 13
 T5N, R7W, W.M., CLATSOP COUNTY, OREGON

Approximate Net Acres	MC Acres
Area 1 (PC) -	35
Area 2 (MC) -	47
Total Sale Acreage =	82

Approximate Scale: 1" = 1000'



1 mile to Highway 202
 Milepost 30

PRIVATE
 STATE

Wage Road

Nehalem River

Highway 103

T5N R7W

T5N R6W

14

18

19

24

Grand Rapids Road

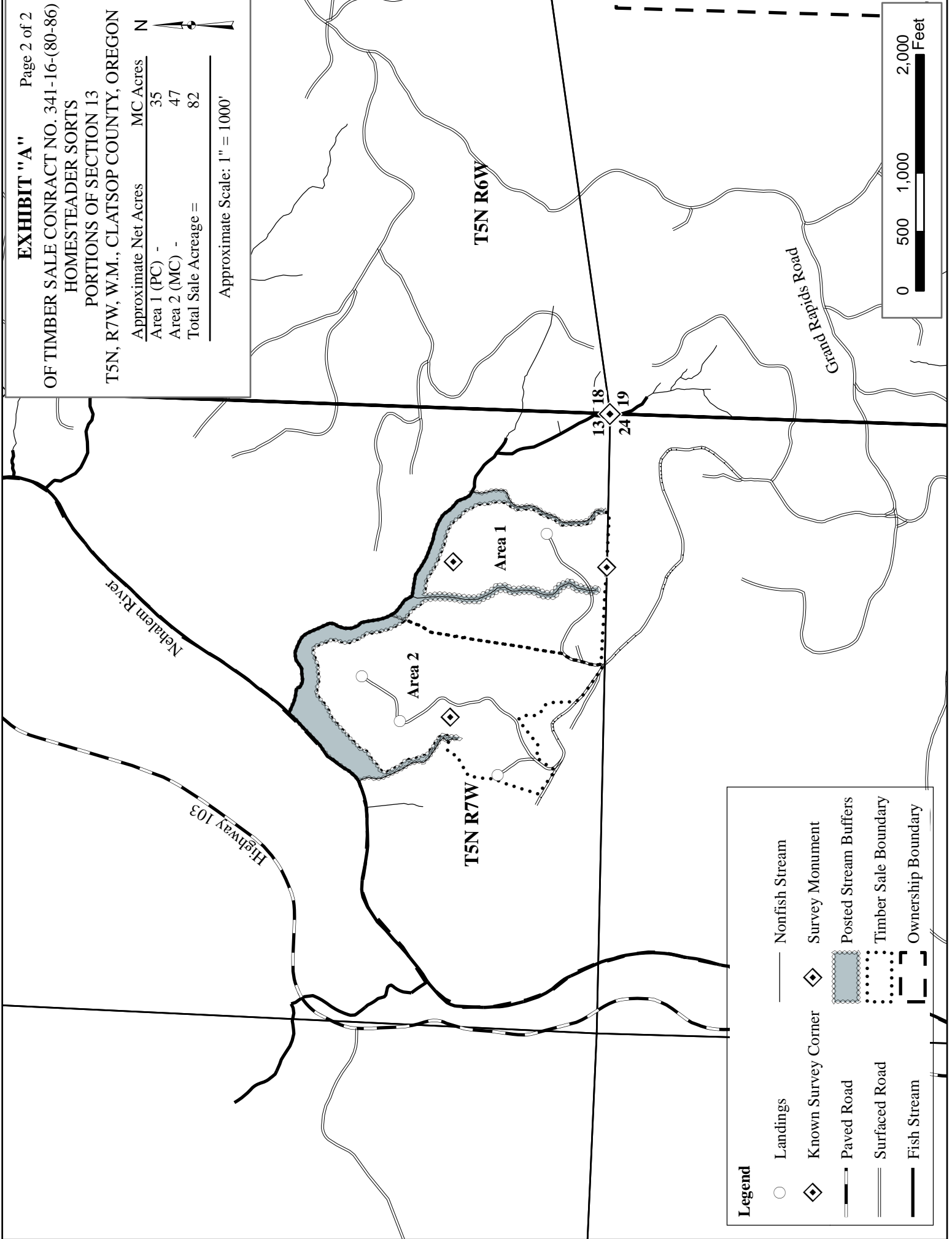


Legend

- Paved Road
- Surfaced Road
- Fish Stream
- Nonfish Stream
- Posted Stream Buffers
- Timber Sale Boundary
- Ownership Boundary

Approximate Net Acres	MC Acres
Area 1 (PC) -	35
Area 2 (MC) -	47
Total Sale Acreage =	82

Approximate Scale: 1" = 1000'



Legend

- Landings
- ◇ Known Survey Corner
- ▬ Paved Road
- ▬ Surfaced Road
- ▬ Fish Stream
- ▬ Nonfish Stream
- ◇ Survey Monument
- ▬ Posted Stream Buffers
- ▬ Timber Sale Boundary
- ▬ Ownership Boundary

