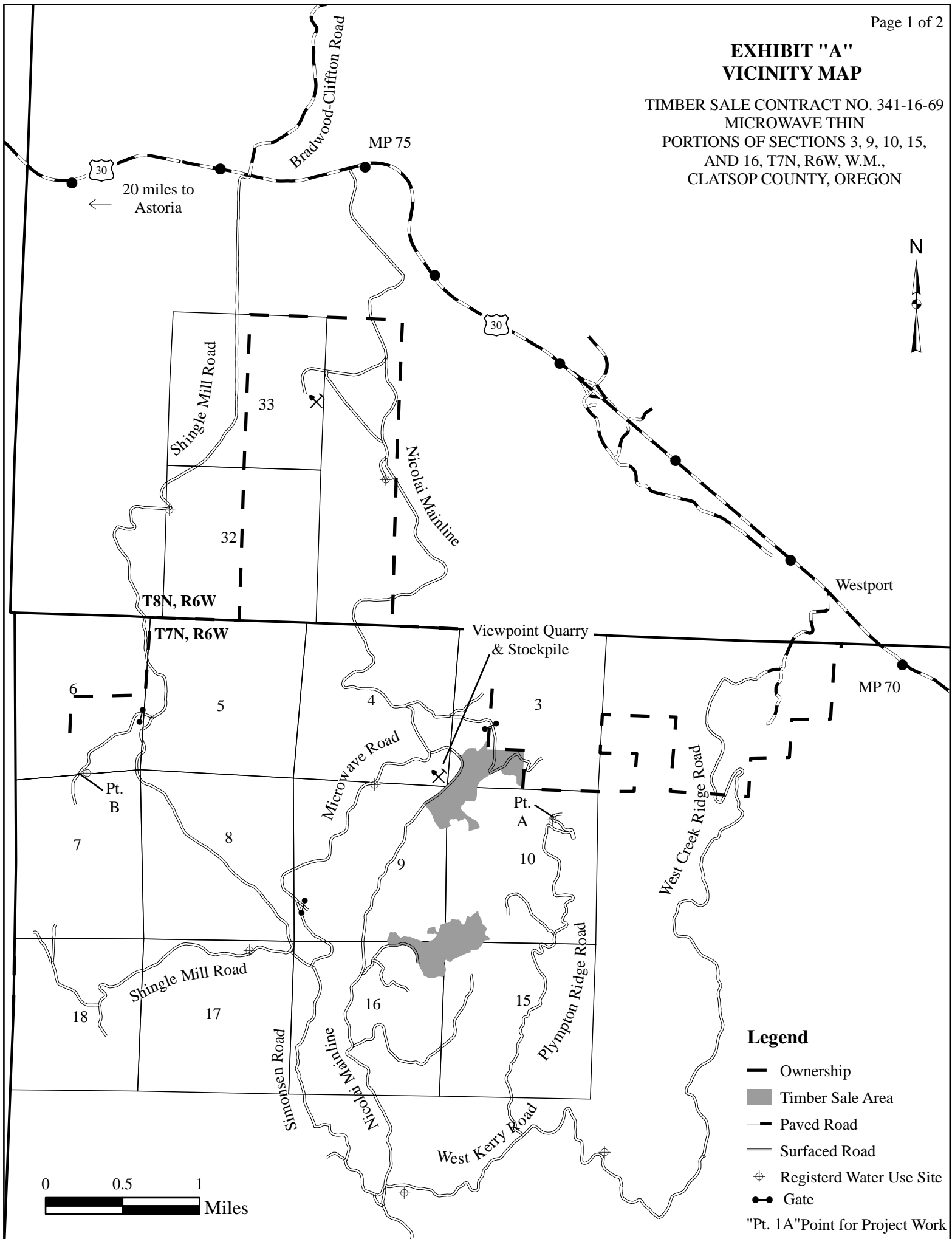


# EXHIBIT "A" VICINITY MAP

TIMBER SALE CONTRACT NO. 341-16-69  
MICROWAVE THIN  
PORTIONS OF SECTIONS 3, 9, 10, 15,  
AND 16, T7N, R6W, W.M.,  
CLATSOP COUNTY, OREGON



## Legend

- Ownership
- Timber Sale Area
- Paved Road
- Surfaced Road
- Registered Water Use Site
- Gate
- "Pt. 1A" Point for Project Work

0 0.5 1  
Miles

**EXHIBIT "A"**

TIMBER SALE CONTRACT NO. 341-16-69  
 MICROWAVE THIN  
 PORTIONS OF SECTIONS 3, 9, 10, 15,  
 AND 16, T7N, R6W, W.M.,  
 CLATSOP COUNTY, OREGON

**APPROXIMATE NET ACRES**

AREA		ACRES
Area 1	PC	82
Area 2	PC	70
Area 3	R/W	11
TOTAL ACRES =		163

