

EXHIBIT "A" MAP

OF TIMBER SALE CONTRACT NO. 341-16-41
LOST PONY
PORTIONS OF SECTIONS 3, 4, AND 10 T6N, R6W
AND PORTIONS OF SECTION 34 T7N, R6W, W.M.,
CLATSOP COUNTY, OREGON.

Approximate Net Acres	MC Acres
Area 1 (MC) -	71
Area 2 (MC) -	93
Area 3 R/W (MC)	1
Total Sale Acreage =	165

0 500 1,000 2,000
Feet

Approximate Scale = 1":1,000'

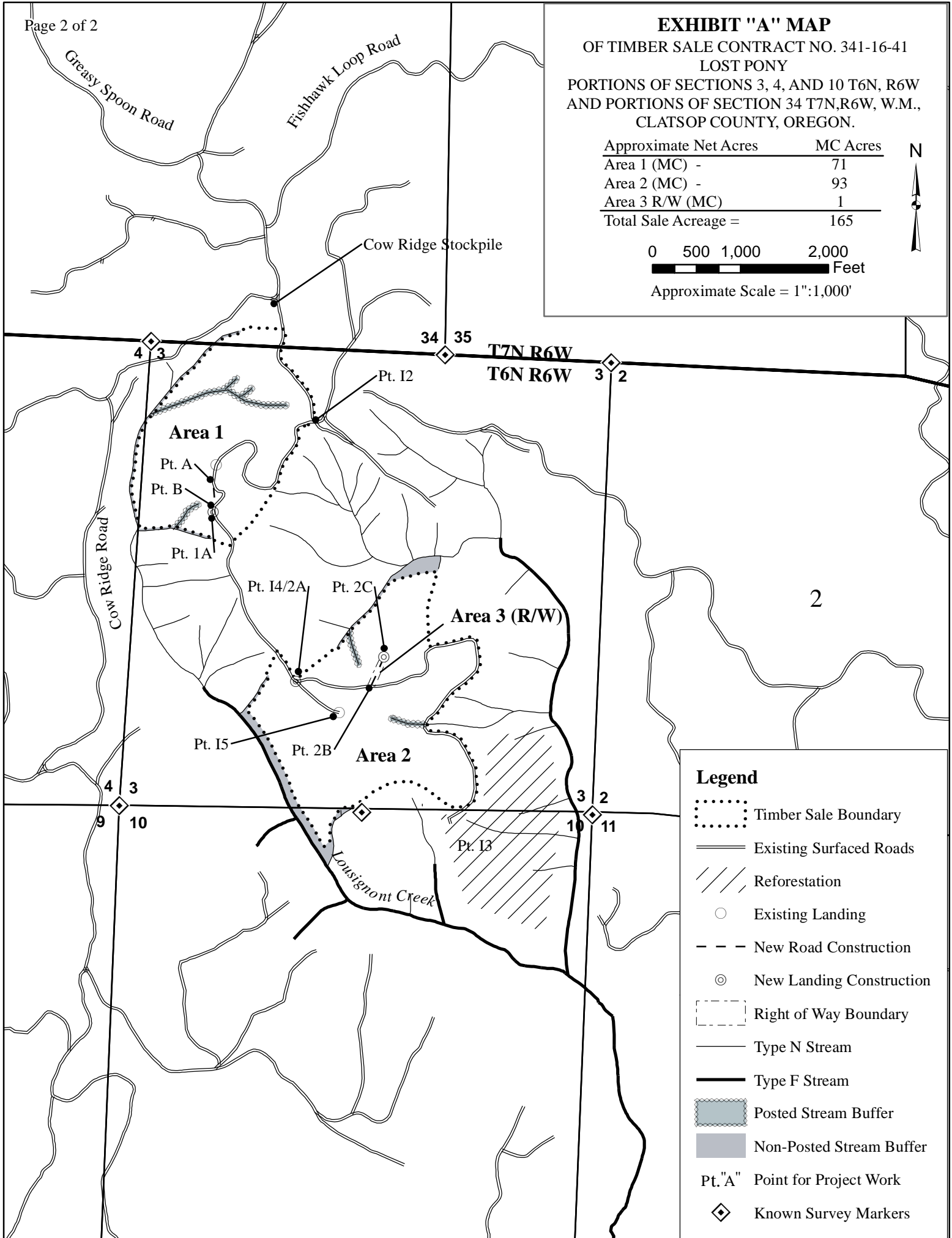


EXHIBIT "A" VICINITY MAP OF TIMBER SALE CONTRACT NO. 341-16-41

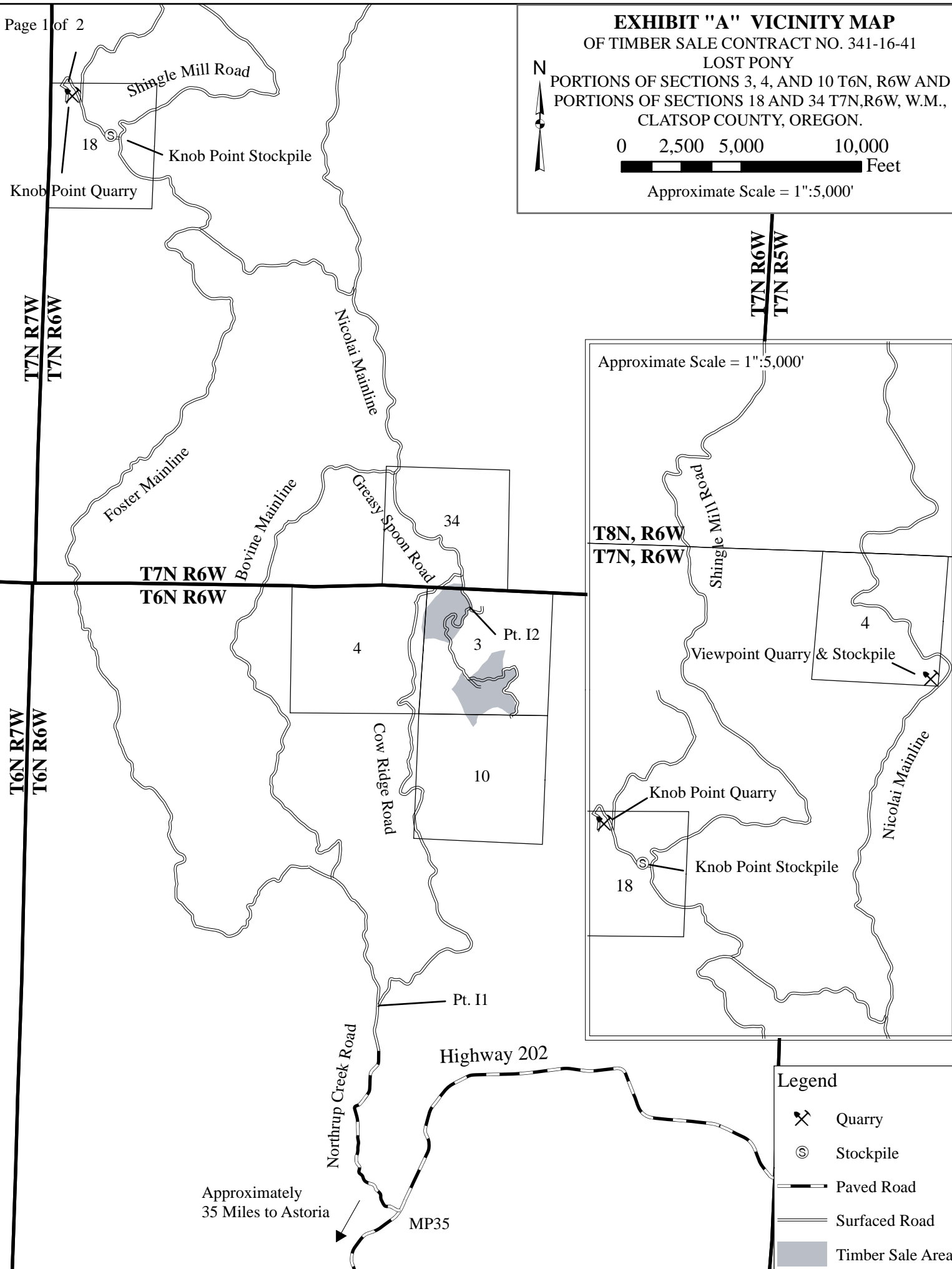
LOST PONY

PORTIONS OF SECTIONS 3, 4, AND 10 T6N, R6W AND
PORTIONS OF SECTIONS 18 AND 34 T7N, R6W, W.M.,
CLATSOP COUNTY, OREGON.



0 2,500 5,000 10,000
Feet

Approximate Scale = 1":5,000'



Legend

- Quarry
- Stockpile
- Paved Road
- Surfaced Road
- Timber Sale Area