

EXHIBIT "A" VICINITY MAP

OF TIMBER SALE CONTRACT NO. 341-16-20
NOWHERE LAND
PORTIONS OF SECTIONS 5, 6, 7, & 8
T6N, R6W, W.M., CLATSOP COUNTY, OREGON

Approximate Net Acres	MC Acres
Area 1 (MC)	79
Area 2 (MC)	41
Area 3 (R/W)	3
Total Sale Acreage	123

Approximate Scale: 1" = 5,000'

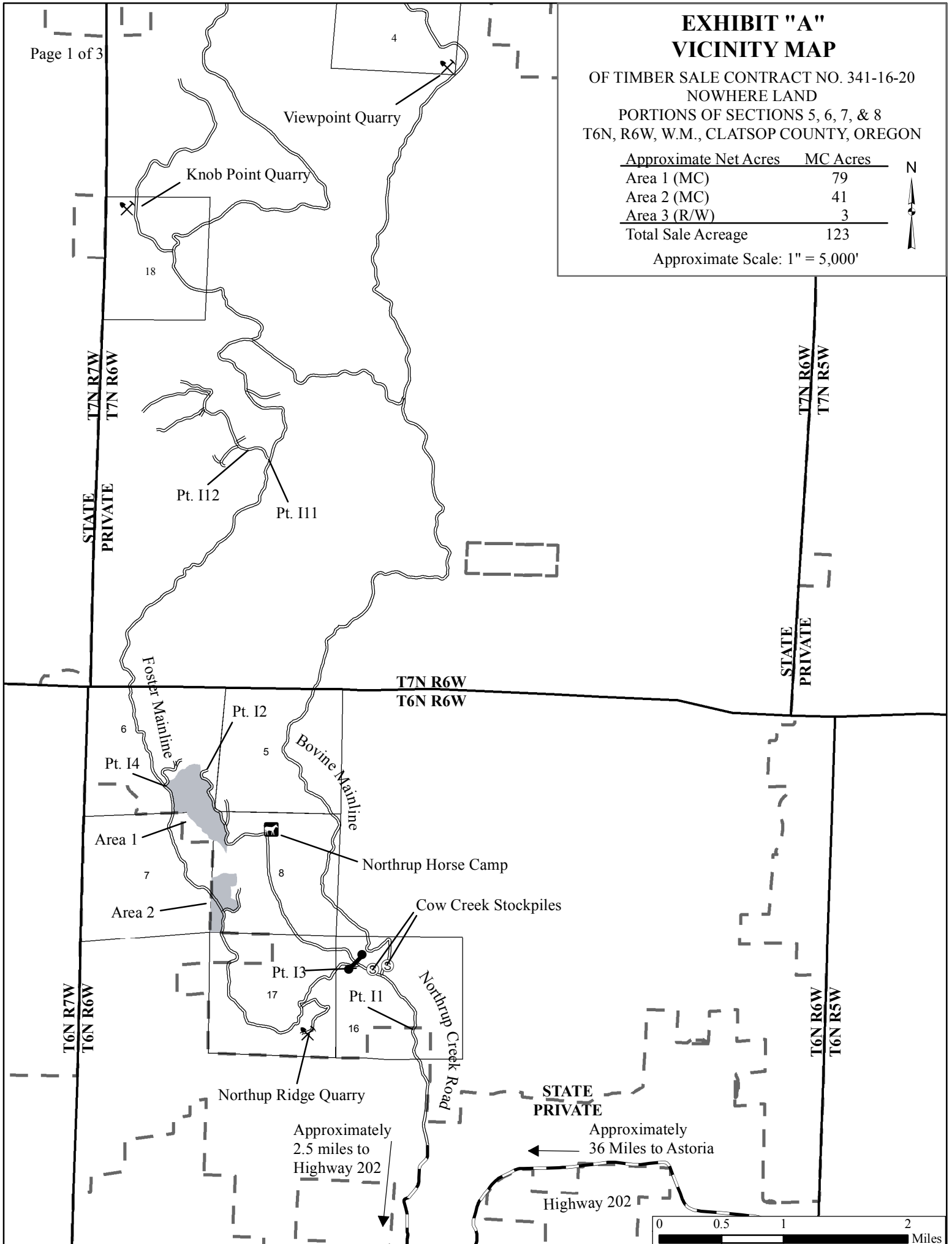
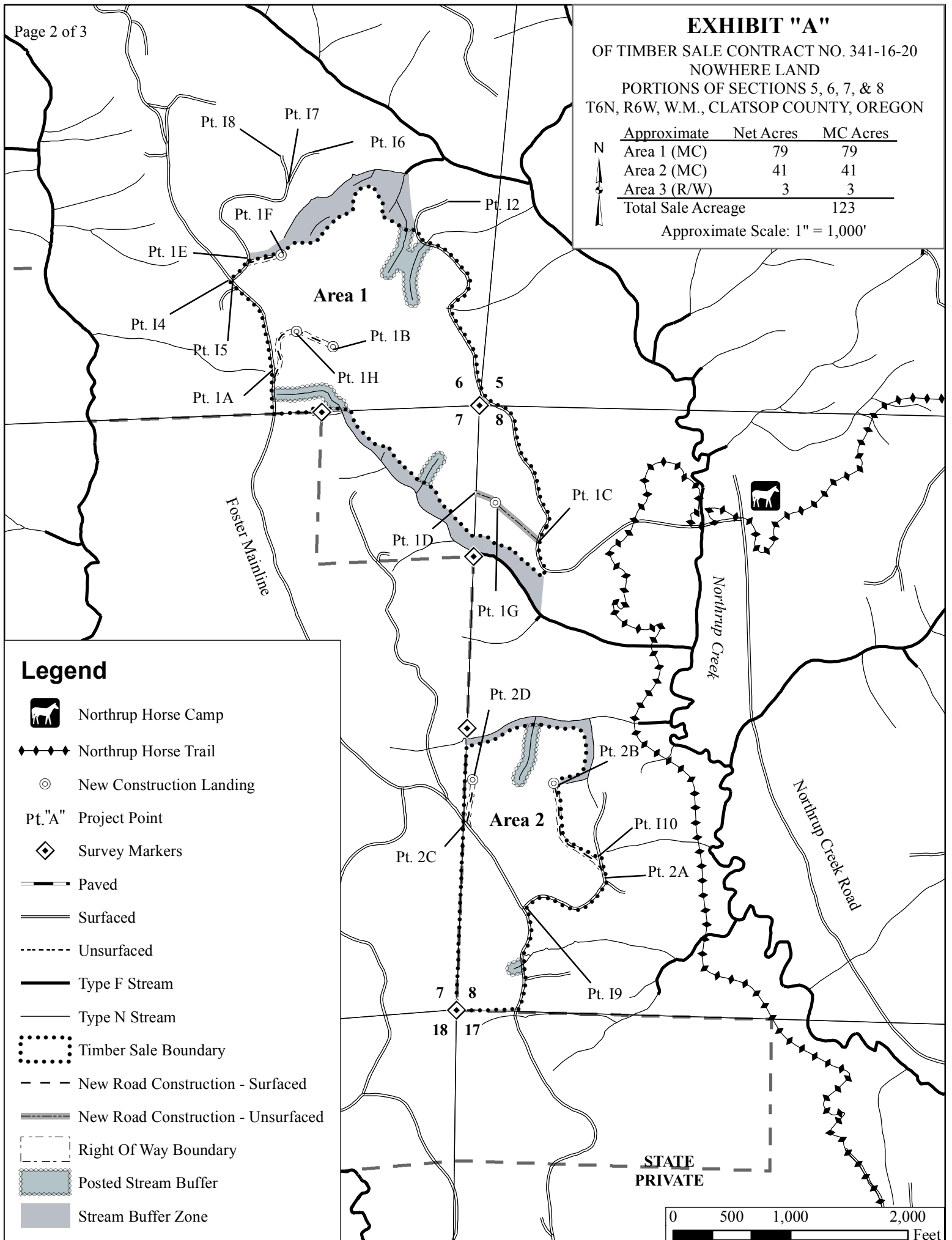


EXHIBIT "A"

OF TIMBER SALE CONTRACT NO. 341-16-20
NOWHERE LAND
PORTIONS OF SECTIONS 5, 6, 7, & 8
T6N, R6W, W.M., CLATSOP COUNTY, OREGON

Approximate	Net Acres	MC Acres
Area 1 (MC)	79	79
Area 2 (MC)	41	41
Area 3 (R/W)	3	3
Total Sale Acreage		123

Approximate Scale: 1" = 1,000'



Legend

- Northrup Horse Camp
- Northrup Horse Trail
- New Construction Landing
- Pt."A" Project Point
- Survey Markers
- Paved
- Surfaced
- Unsurfaced
- Type F Stream
- Type N Stream
- Timber Sale Boundary
- New Road Construction - Surfaced
- New Road Construction - Unsurfaced
- Right Of Way Boundary
- Posted Stream Buffer
- Stream Buffer Zone

STATE
PRIVATE

0 500 1,000 2,000 Feet

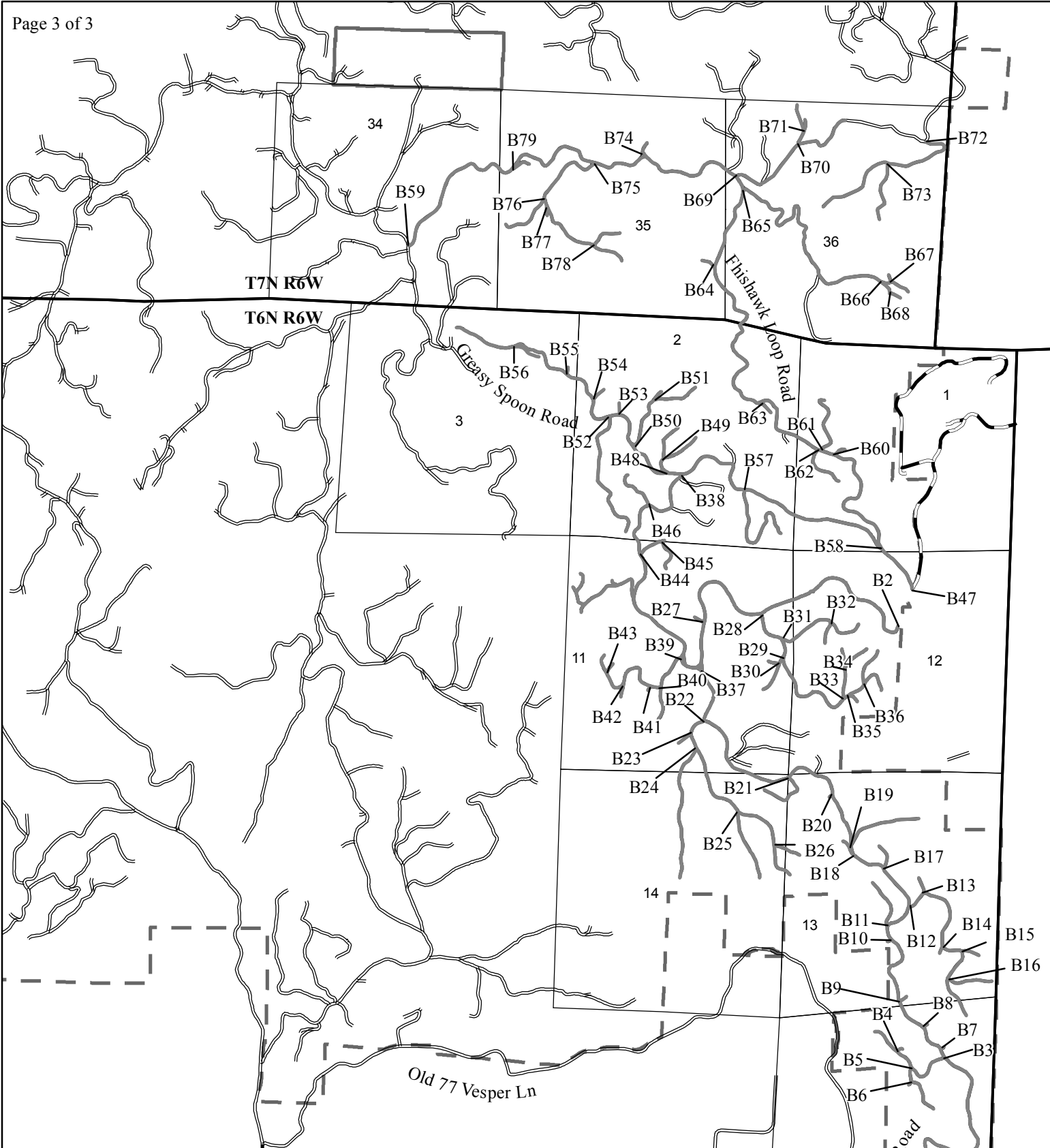
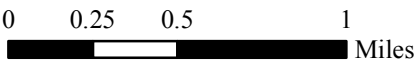


EXHIBIT "A"
BRUSHING/SPRAYING MAP
OF TIMBER SALE CONTRACT NO. 341-16-20
NOWHERE LAND
PORTIONS OF SECTIONS 5, 6, 7, & 8
T6N, R6W, W.M., CLATSOP COUNTY, OREGON N

Approximate Scale: 1" = 3,000'



Legend

- B1 Brushing Point Labels
- Roads to be Brushed/Sprayed
- Paved Roads
- Surfaced Roads
- Ownership Boundary