

Features

- Timber Sale Boundary
- Radio Tower
- Locked Gate

Roads

- Existing Road STATE Maintained
- Existing Road Purchaser Maintained

Marbled Murrelet Management Area

- Buffer
- Occupied Habitat
- Seasonally Restricted Area

Project Points

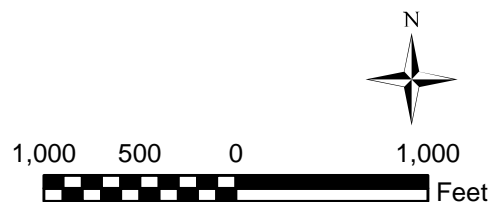
- Landing
- Road Point
- Waste Area

Streams

- Type F Stream
- Perennial Type N Stream
- Seasonal Type N Stream
- Unclassified
- Streambuffers / Green Tree Retention Areas
- Reforestation Area

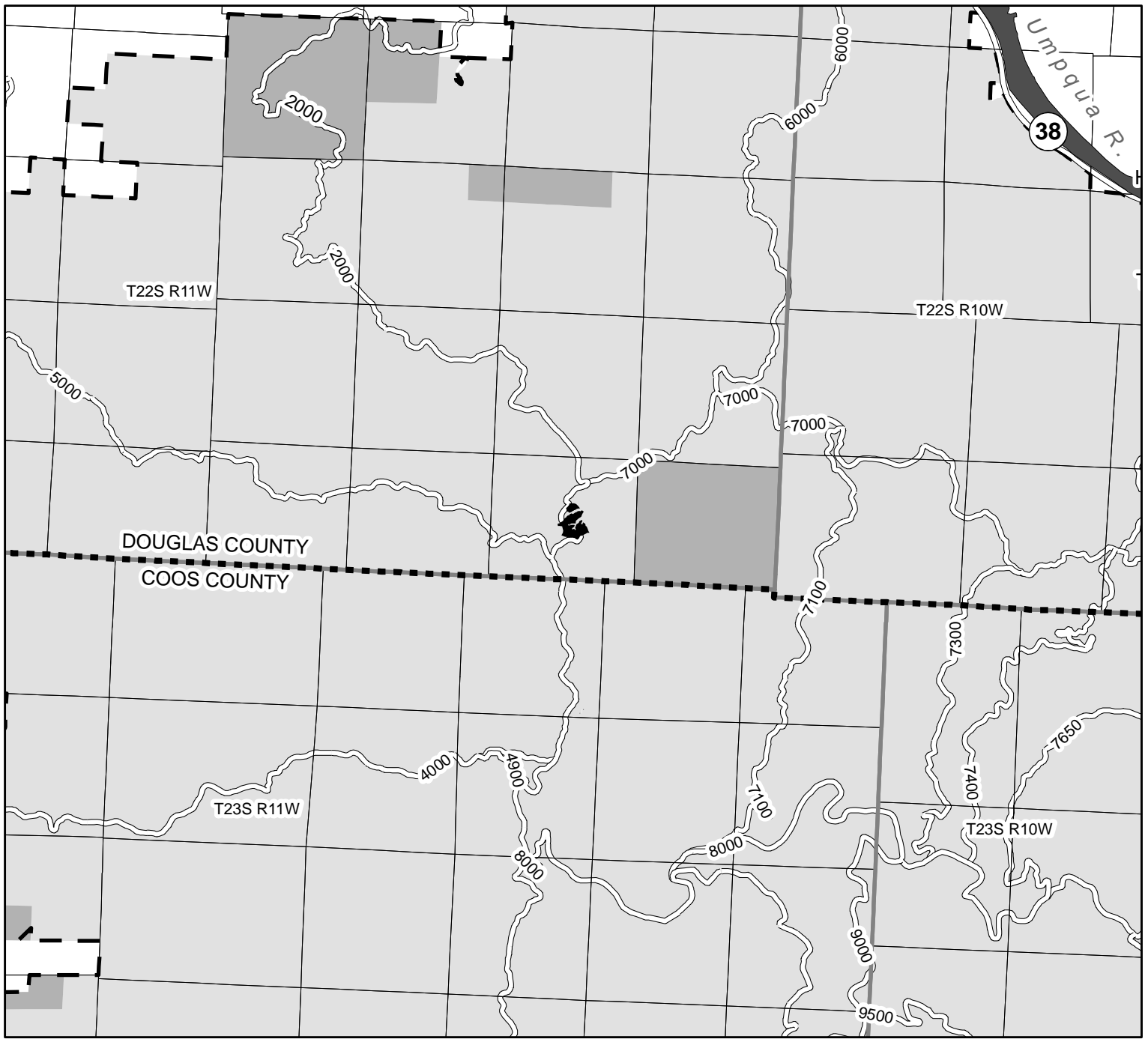
EXHIBIT "A"
Sale No. 341-16-18
Deer Creek Headwaters
 Portions of Section 35
 T22S, R11W, W.M.
 Douglas County, Oregon
 Regulated Use Area CS-1
 100% CSL

Approximately 15
Net Harvest Acres



1:12,000 1 inch = 1,000 feet

The information shown on Exhibit "A" map(s) are approximate locations. Exact locations of features represented by map symbols will be determined on site and shall depend upon the conditions that exist on site. Activities shall be conducted based upon features determined on site rather than features shown on maps.



Legend





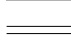

-  Timber Sale Area
-  STATE Forest Boundary
-  STATE CSL
-  STATE BOF
-  Mainline Roads
-  County Line

EXHIBIT "A"

VICINITY MAP

Sale No. 341-16-18

Deer Creek Headwaters

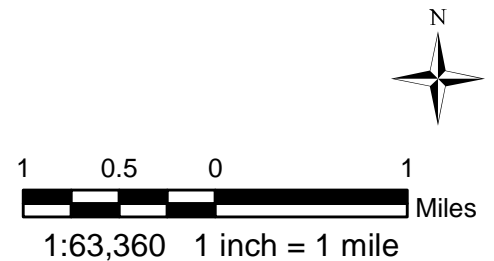
Portions of Section 35

T22S, R11W, W.M.

Douglas County, Oregon

Regulated Use Area CS-1

100% CSL



The information shown on Exhibit "A" map(s) are approximate locations. Exact locations of features represented by map symbols will be determined on site and shall depend upon the conditions that exist on site. Activities shall be conducted based upon features determined on site rather than features shown on maps.