

EXHIBIT "A"

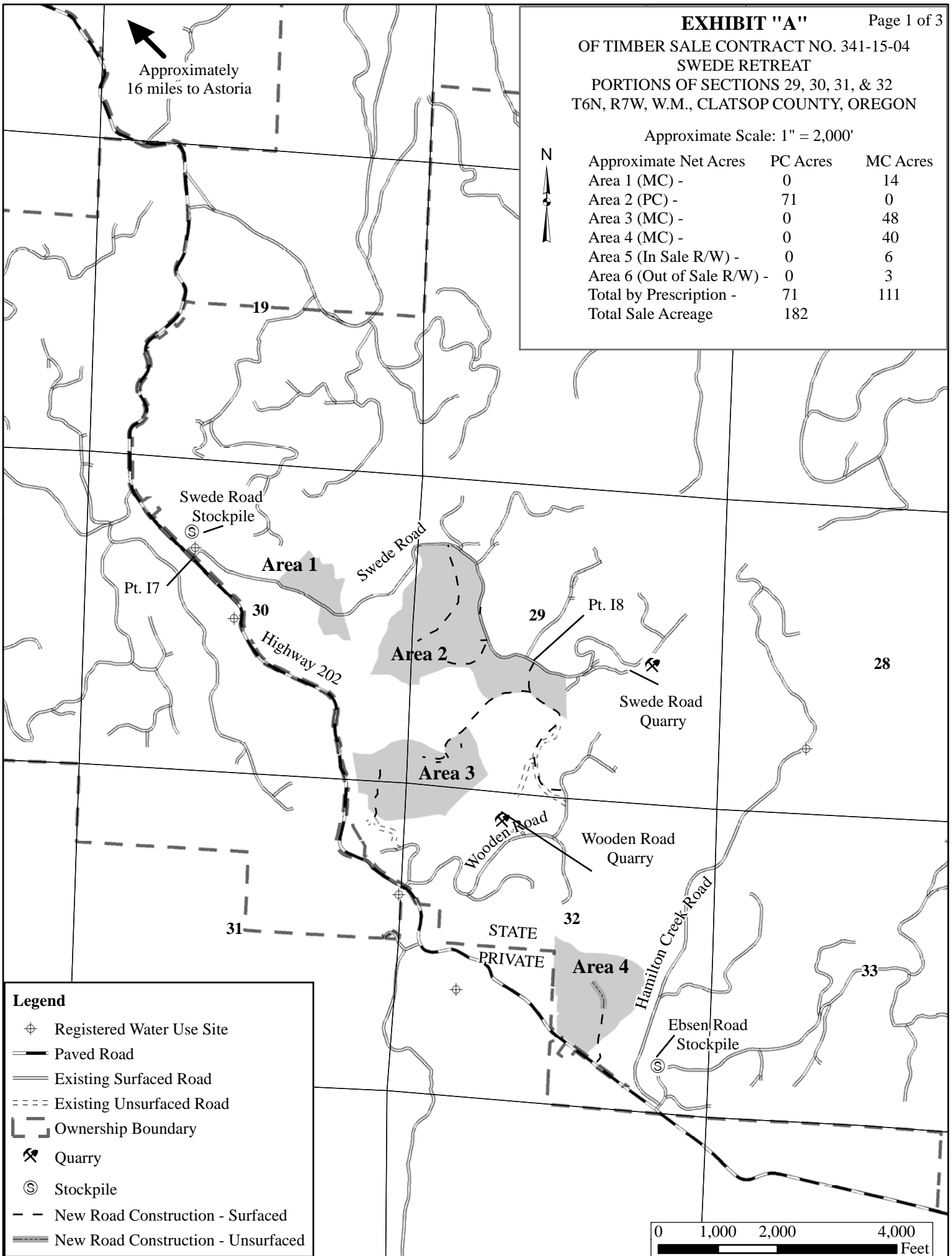
Page 1 of 3

OF TIMBER SALE CONTRACT NO. 341-15-04
SWEDE RETREAT
PORTIONS OF SECTIONS 29, 30, 31, & 32
T6N, R7W, W.M., CLATSOP COUNTY, OREGON

Approximate Scale: 1" = 2,000'



Approximate Net Acres	PC Acres	MC Acres
Area 1 (MC) -	0	14
Area 2 (PC) -	71	0
Area 3 (MC) -	0	48
Area 4 (MC) -	0	40
Area 5 (In Sale R/W) -	0	6
Area 6 (Out of Sale R/W) -	0	3
Total by Prescription -	71	111
Total Sale Acreage	182	



OF TIMBER SALE CONTRACT NO. 341-15-04

SWEDE RETREAT

PORTIONS OF SECTIONS 29, 30, 31, & 32
T6N, R7W, W.M., CLATSOP COUNTY, OREGON

Approximate Net Acres	PC Acres	MC Acres
Area 1 (MC) -	0	14
Area 2 (PC) -	71	0
Area 3 (MC) -	0	48
Area 4 (MC) -	0	40
Area 5 (In Sale R/W) -	0	6
Area 6 (Out of Sale R/W) -	0	3
Total by Prescription -	71	111
Total Sale Acreage	182	

Approximate Scale: 1" = 1,000'

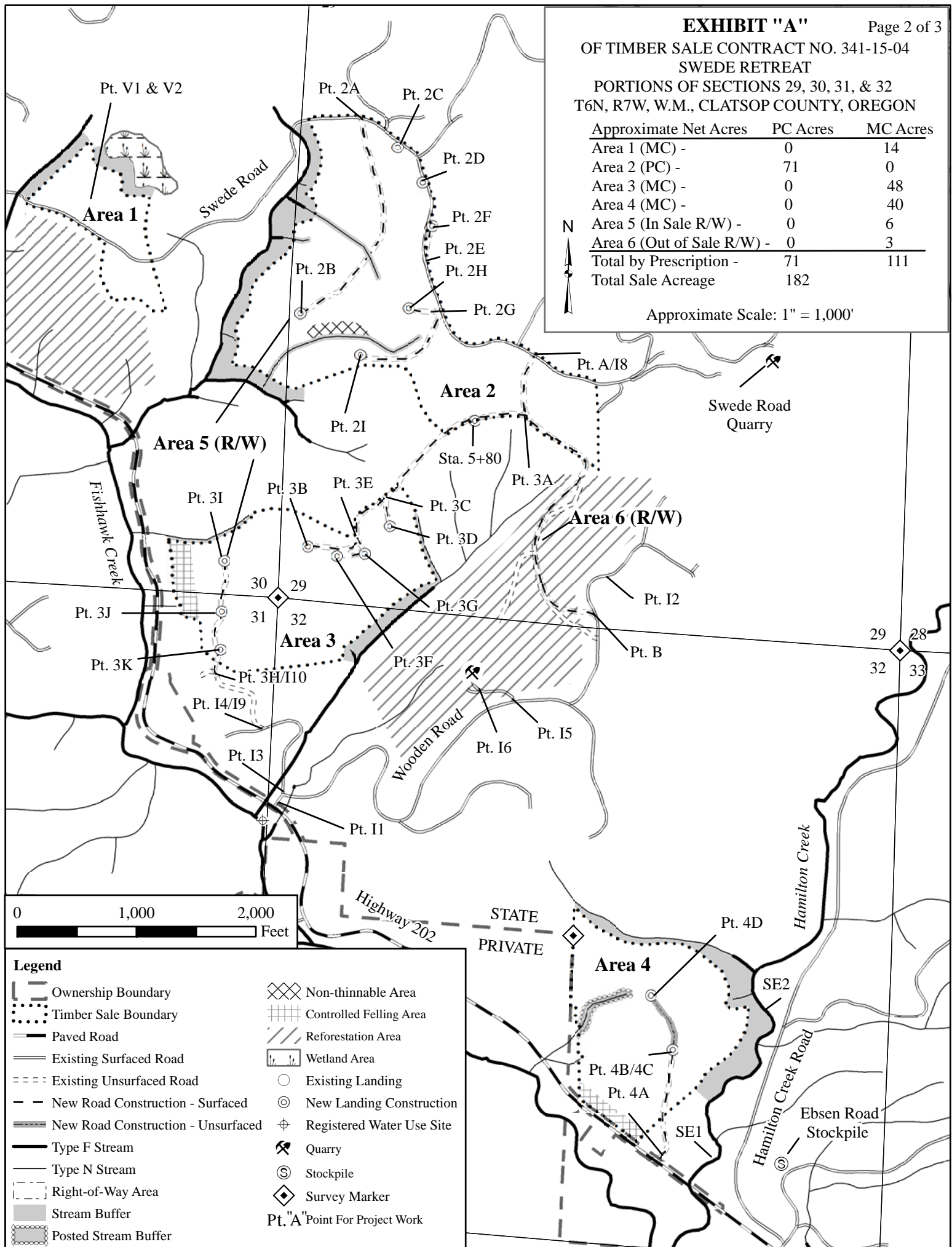


EXHIBIT "A"
ROADSIDE BRUSHING AND SPRAYING MAP
 OF TIMBER SALE CONTRACT NO. 341-15-04
 SWEDE RETREAT
 PORTIONS OF SECTIONS 17, 18, 19, 20, 29, 30,
 31, AND, 32, T6N, R7W, W.M., AND
 PORTIONS OF SECTIONS 13, 24, AND 25, T6N, R8W W.M.
 CLATSOP COUNTY, OREGON.

0 0.25 0.5 1
 Miles

Approximate Scale: 1"=2,640' (0.5 mile)

