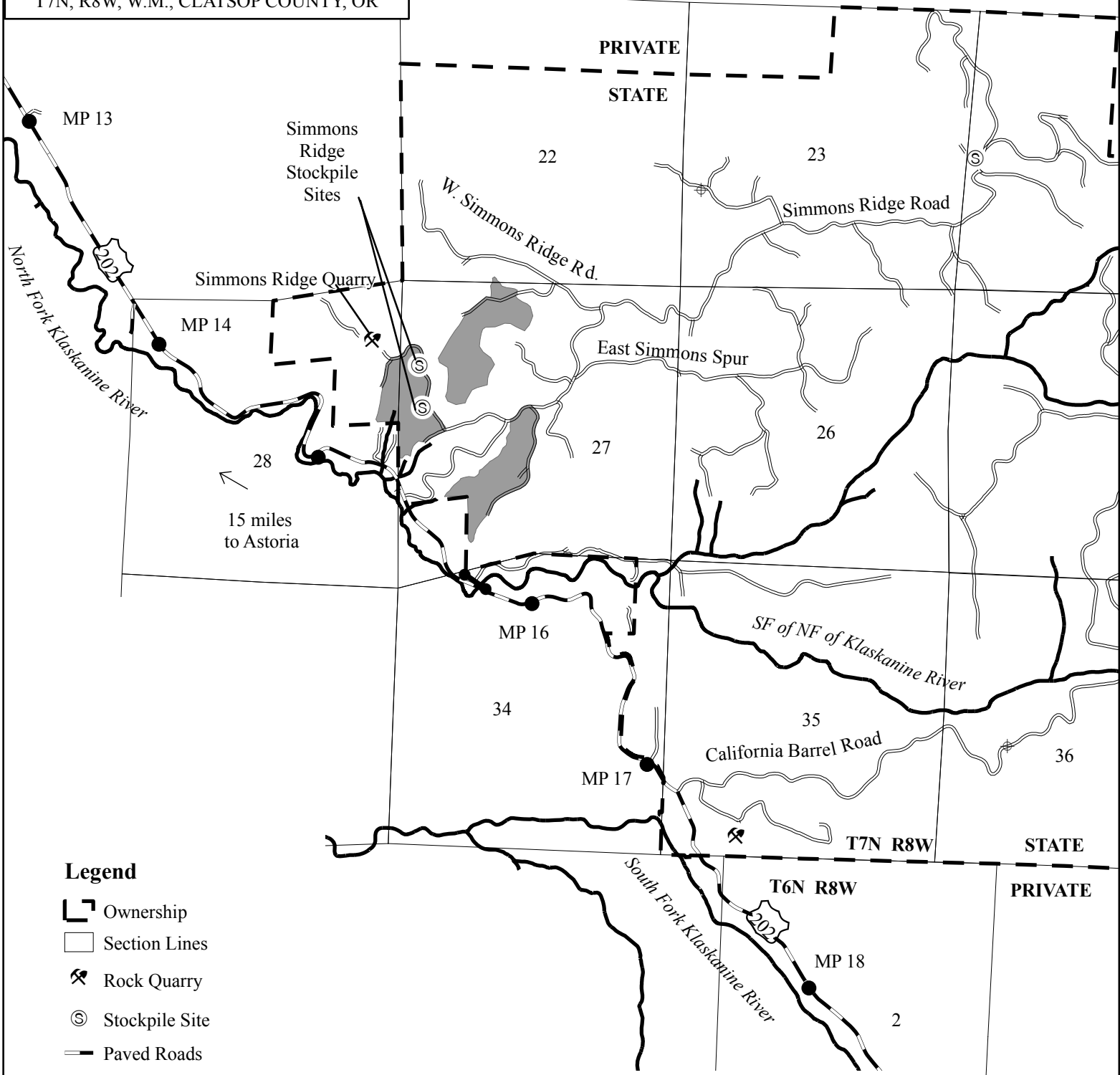


**EXHIBIT "A"
VICINITY**

TIMBER SALE CONTRACT NO. 341-14-43
SLUICED SIMMONS
PORTIONS OF SECTIONS 22, 27, AND 28,
T7N, R8W, W.M., CLATSOP COUNTY, OR



Legend

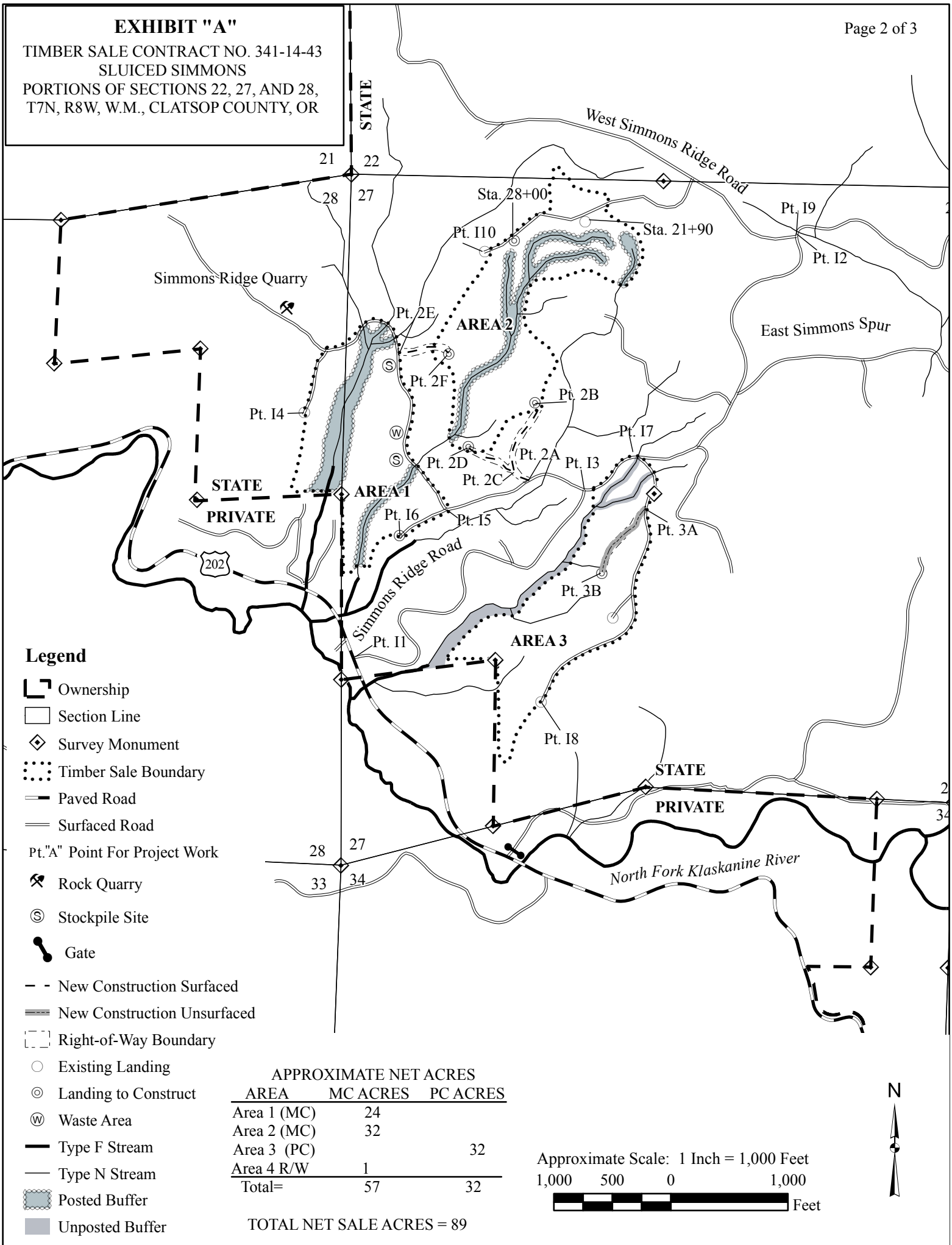
- Ownership
- Section Lines
- Rock Quarry
- Stockpile Site
- Paved Roads
- Surfaced Roads
- Gate
- Type F Stream
- Timber Sale Area
- Registered Waterhole

Approximate Scale: 1 inch equals 0.5 miles



EXHIBIT "A"

TIMBER SALE CONTRACT NO. 341-14-43
 SLUCED SIMMONS
 PORTIONS OF SECTIONS 22, 27, AND 28,
 T7N, R8W, W.M., CLATSOP COUNTY, OR



Legend

- Ownership
- Section Line
- Survey Monument
- Timber Sale Boundary
- Paved Road
- Surfaced Road
- Pt. "A" Point For Project Work
- Rock Quarry
- Stockpile Site
- Gate
- - New Construction Surfaced
- = = New Construction Unsurfaced
- Right-of-Way Boundary
- Existing Landing
- Landing to Construct
- Waste Area
- Type F Stream
- Type N Stream
- Posted Buffer
- Unposted Buffer

AREA	APPROXIMATE NET ACRES	
	MC ACRES	PC ACRES
Area 1 (MC)	24	
Area 2 (MC)	32	
Area 3 (PC)		32
Area 4 R/W	1	
Total=	57	32

TOTAL NET SALE ACRES = 89

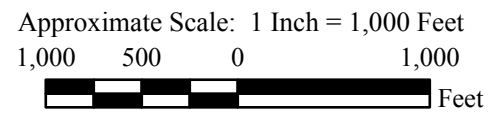
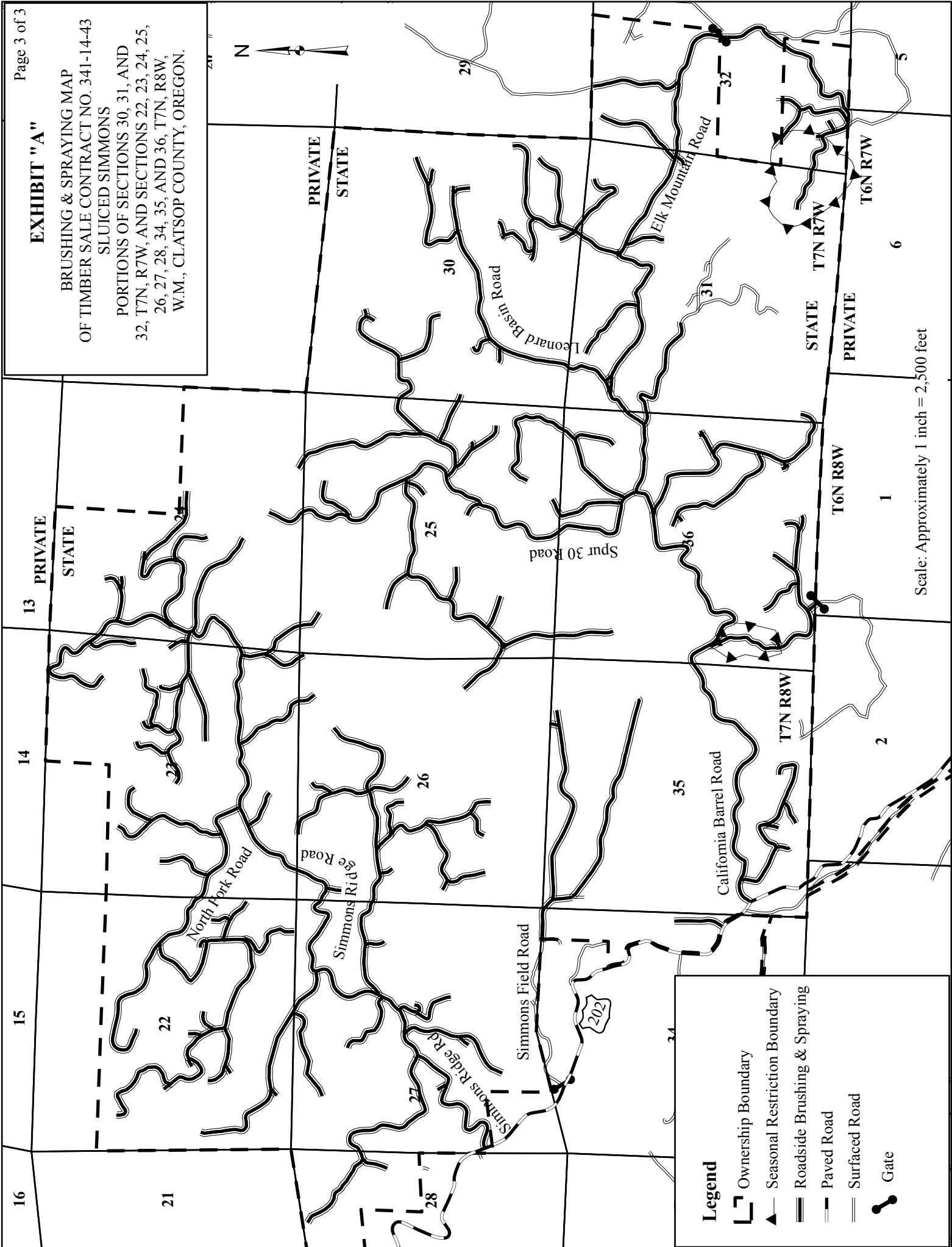


EXHIBIT "A"

BRUSHING & SPRAYING MAP
OF TIMBER SALE CONTRACT NO. 341-14-43
SLUCED SIMMONS
PORTIONS OF SECTIONS 30, 31, AND
32, T7N, R7W, AND SECTIONS 22, 23, 24, 25,
26, 27, 28, 34, 35, AND 36, T7N, R8W,
W.M., CLATSOP COUNTY, OREGON.



Legend

- Ownership Boundary
- Seasonal Restriction Boundary
- Roadside Brushing & Spraying
- Paved Road
- Surfaced Road
- Gate

Scale: Approximately 1 inch = 2,500 feet