



EXHIBIT "A"

Vicinity Map

OF TIMBER SALE CONTRACT NO. 341-14-34

MULAKER

PORTIONS OF SECTIONS 19, 30, 31, & 32,
T6N, R6W, PORTIONS OF SECTIONS 36,
T6N, R7W, AND PORTIONS OF SECTION 1, T5N, R7W,
W.M., CLATSOP COUNTY, OREGON.

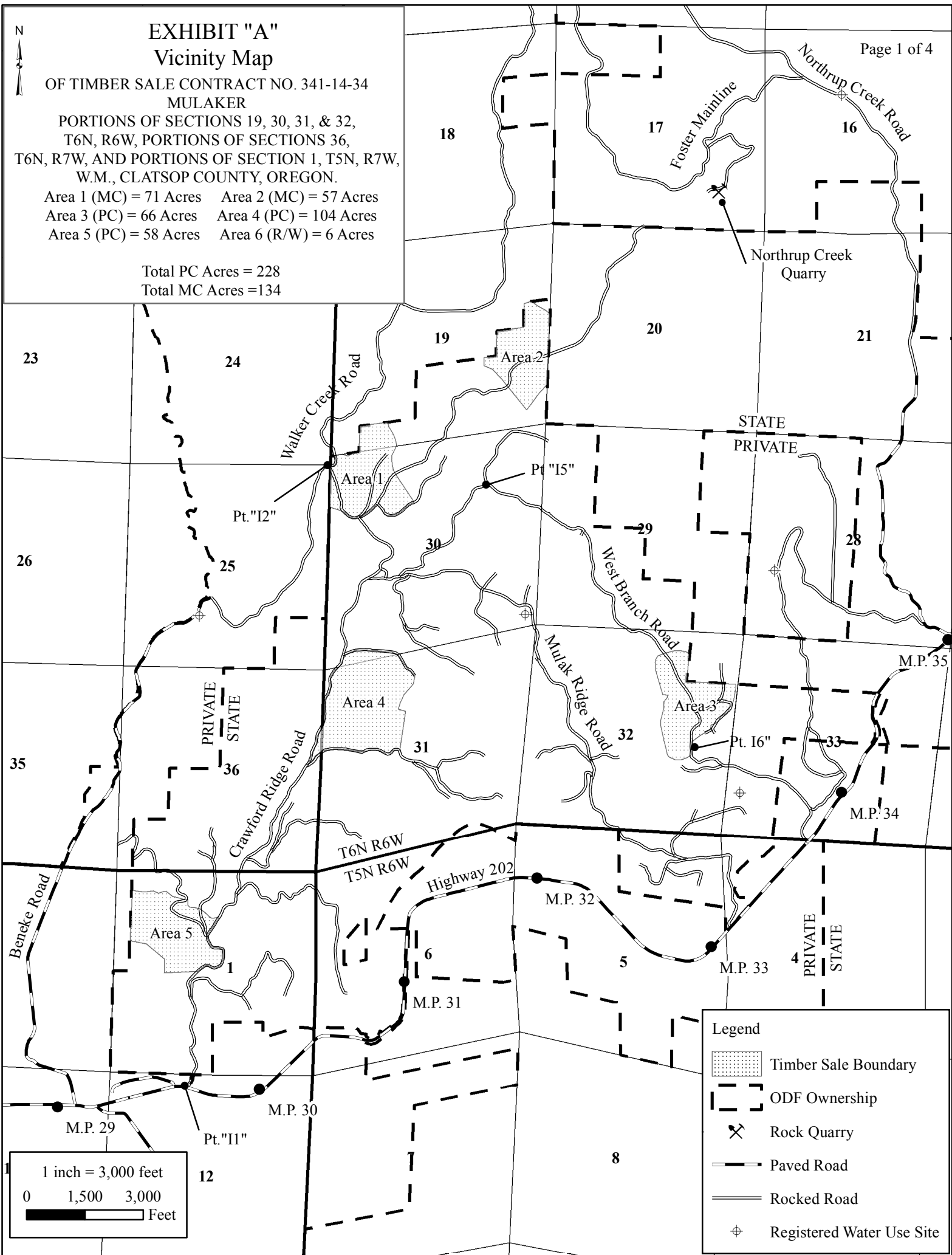
Area 1 (MC) = 71 Acres Area 2 (MC) = 57 Acres

Area 3 (PC) = 66 Acres Area 4 (PC) = 104 Acres

Area 5 (PC) = 58 Acres Area 6 (R/W) = 6 Acres

Total PC Acres = 228

Total MC Acres = 134



Legend

- Timber Sale Boundary
- ODF Ownership
- Rock Quarry
- Paved Road
- Rocked Road
- Registered Water Use Site

1 inch = 3,000 feet

0 1,500 3,000
Feet

EXHIBIT "A"

OF TIMBER SALE CONTRACT NO. 341-14-34

MULAKER

PORTIONS OF SECTIONS 19, 30, 31, & 32,

T6N, R6W, PORTIONS OF SECTION 36,

T6N, R7W, AND PORTIONS OF SECTION 1, T5N, R7W,
W.M., CLATSOP COUNTY, OREGON.

Area 1 (MC) = 71 Acres Area 2 (MC) = 57 Acres

Area 3 (PC) = 66 Acres Area 4 (PC) = 104 Acres

Area 5 (PC) = 58 Acres Area 6 (R/W) = 06 Acres

Total PC Acres = 228

Total MC Acres = 134

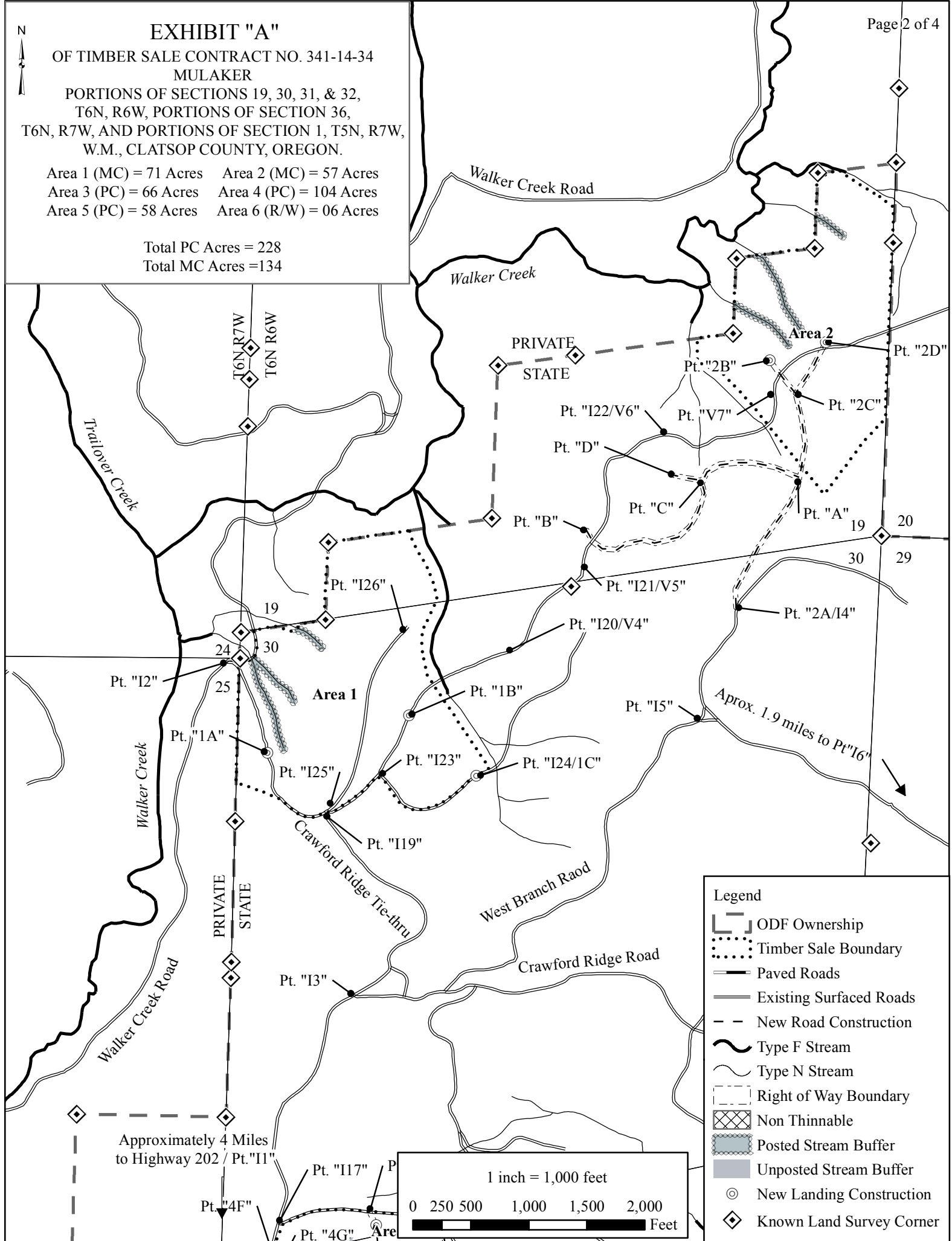


EXHIBIT "A"

OF TIMBER SALE CONTRACT NO. 341-14-34

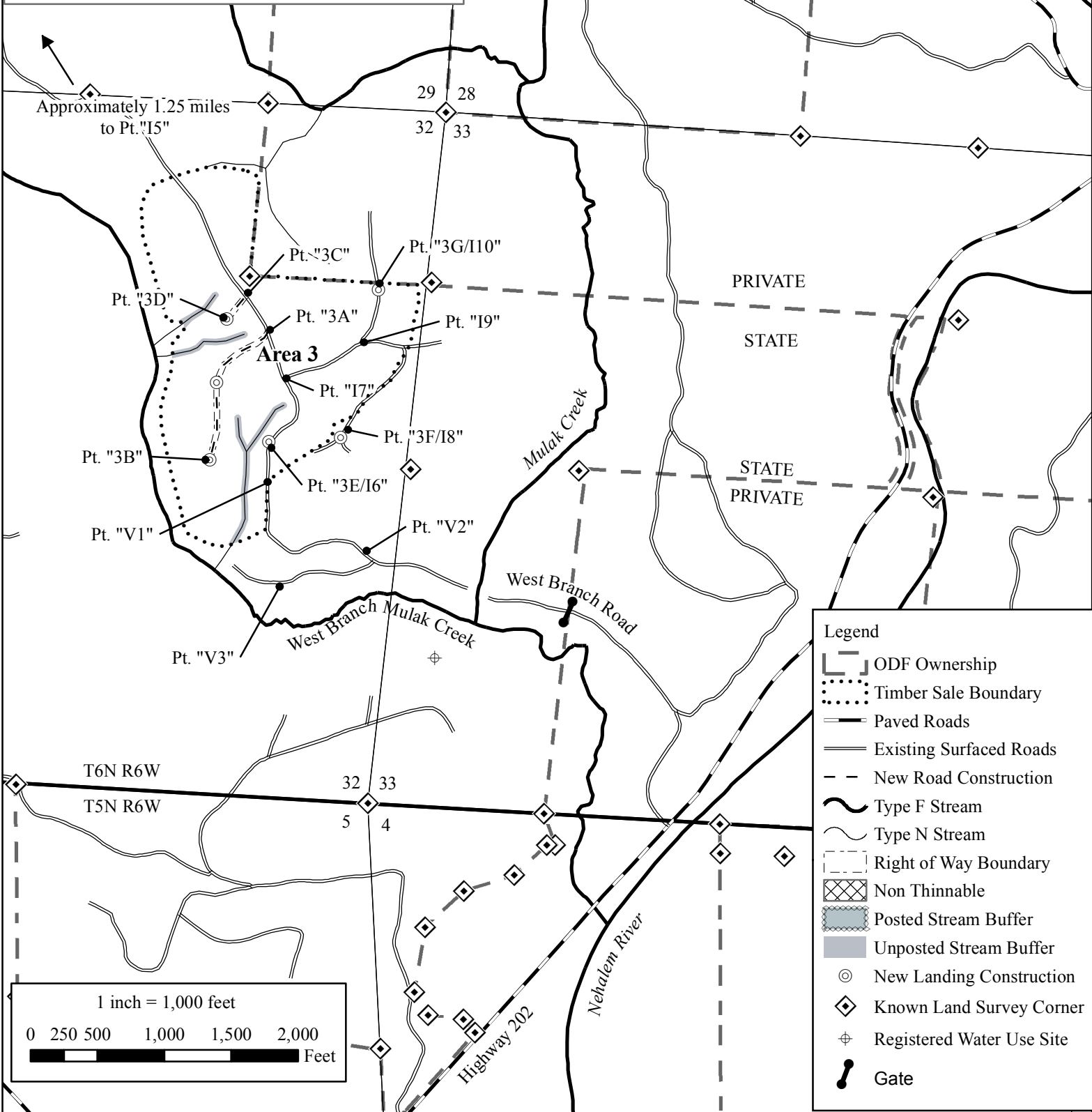
MULAKER

PORTIONS OF SECTIONS 19, 30, 31, & 32,
T6N, R6W, PORTIONS OF SECTIONS 25 & 36,
T6N, R7W, AND PORTIONS OF SECTION 1, T5N, R7W,
W.M., CLATSOP COUNTY, OREGON.

Area 1 (MC) = 71 Acres Area 2 (MC) = 57 Acres
Area 3 (PC) = 66 Acres Area 4 (PC) = 104 Acres
Area 5 (PC) = 58 Acres Area 6 (R/W) = 06 Acres

Total PC Acres = 228

Total MC Acres = 134



Legend

- ODF Ownership
- Timber Sale Boundary
- Paved Roads
- Existing Surfaced Roads
- New Road Construction
- Type F Stream
- Type N Stream
- Right of Way Boundary
- Non Thinnable
- Posted Stream Buffer
- Unposted Stream Buffer
- New Landing Construction
- Known Land Survey Corner
- Registered Water Use Site
- Gate

EXHIBIT "A"

OF TIMBER SALE CONTRACT NO. 341-14-34
MULAKER

PORTIONS OF SECTIONS 19, 30, 31, & 32,
T6N, R6W, PORTIONS OF SECTIONS 25 & 36,
T6N, R7W, AND PORTIONS OF SECTION 1, T5N, R7W,
W.M., CLATSOP COUNTY, OREGON.

Area 1 (MC) = 71 Acres Area 2 (MC) = 57 Acres
Area 3 (PC) = 66 Acres Area 4 (PC) = 104 Acres
Area 5 (PC) = 58 Acres Area 6 (R/W) = 06 Acres

Total PC Acres = 228
Total MC Acres = 134

