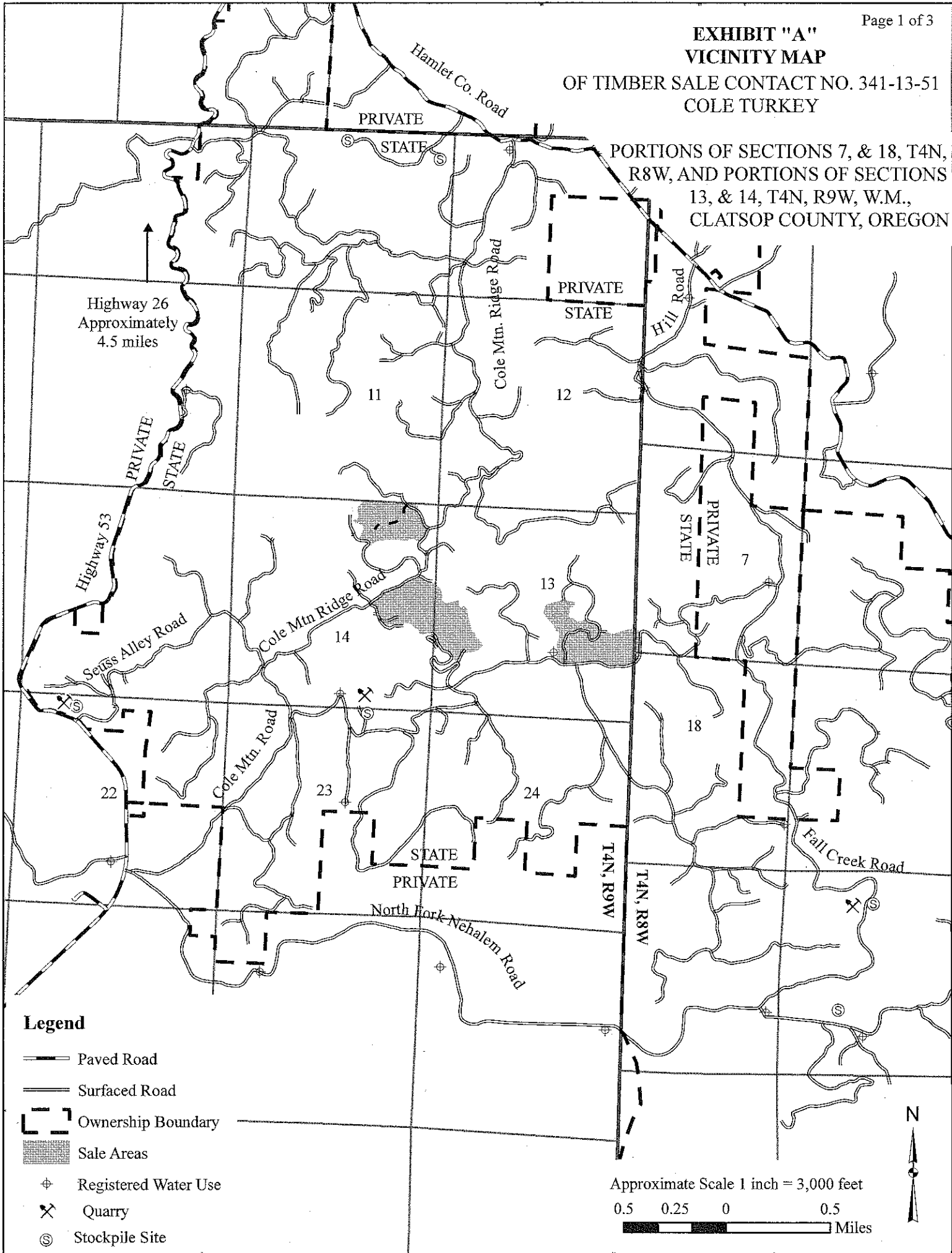


EXHIBIT "A"
VICINITY MAP
OF TIMBER SALE CONTACT NO. 341-13-51
COLE TURKEY

PORTIONS OF SECTIONS 7, & 18, T4N,
R8W, AND PORTIONS OF SECTIONS
13, & 14, T4N, R9W, W.M.,
CLATSOP COUNTY, OREGON



Legend

- Paved Road
- Surfaced Road
- Ownership Boundary
- Sale Areas
- Registered Water Use
- Quarry
- Stockpile Site

Approximate Scale 1 inch = 3,000 feet
0.5 0.25 0 0.5
Miles

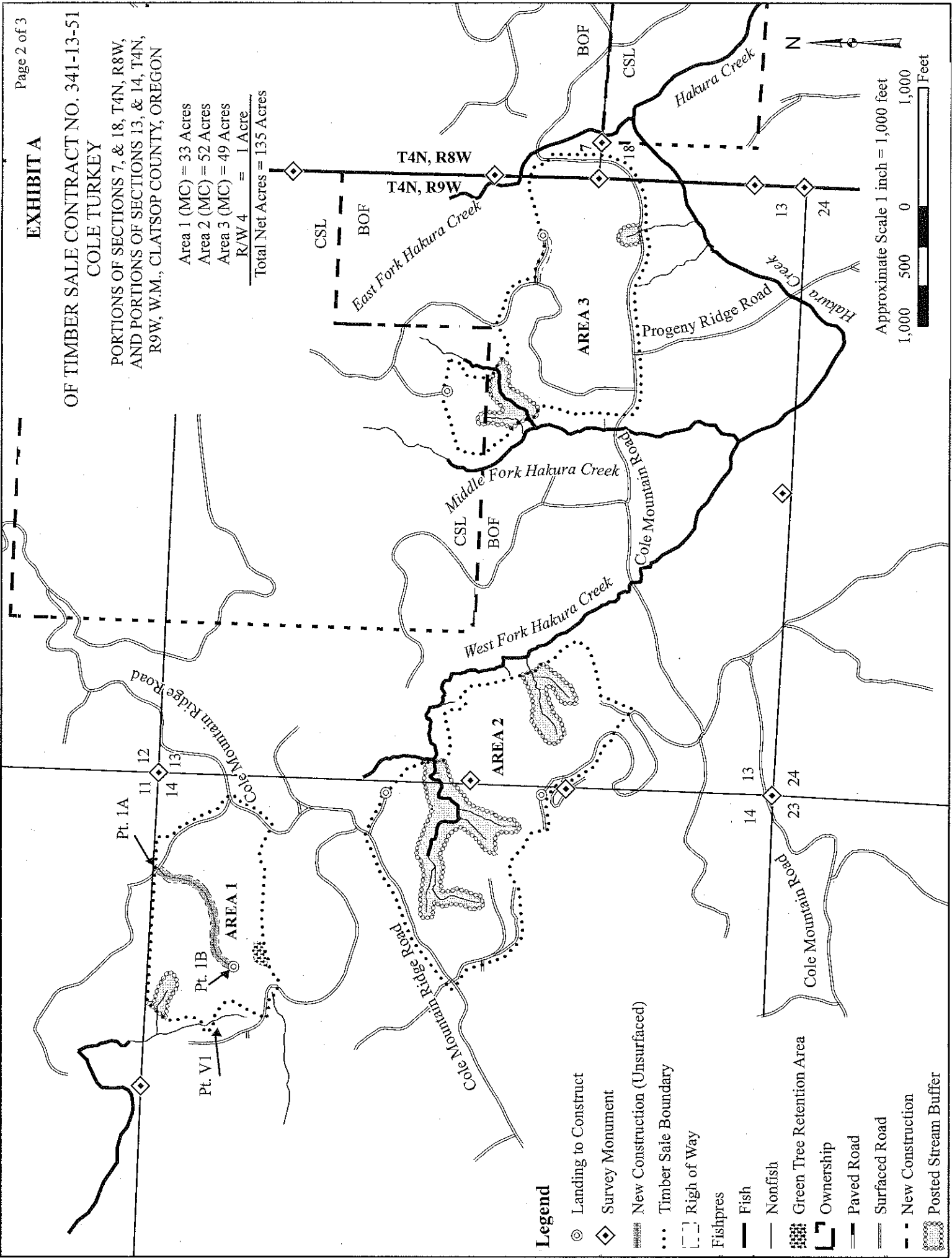


EXHIBIT A

OF TIMBER SALE CONTRACT NO. 341-13-51
COLE TURKEY

PORTIONS OF SECTIONS 7, & 18, T4N, R8W,
AND PORTIONS OF SECTIONS 13, & 14, T4N,
R9W, W.M., CLATSOP COUNTY, OREGON

Area 1 (MC) = 33 Acres
Area 2 (MC) = 52 Acres
Area 3 (MC) = 49 Acres
R/W 4 = 1 Acre
Total Net Acres = 135 Acres



Legend

- ⊙ Landing to Construct
- ◇ Survey Monument
- ▤ New Construction (Unsurfaced)
- ⋯ Timber Sale Boundary
- ▭ Right of Way
- Fishpres
- Fish
- Nonfish
- ▨ Green Tree Retention Area
- ▧ Ownership
- ▬ Paved Road
- ▬ Surfaced Road
- - - New Construction
- ▨ Posted Stream Buffer

Approximate Scale 1 inch = 1,000 feet

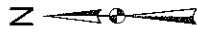
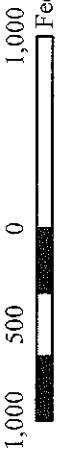


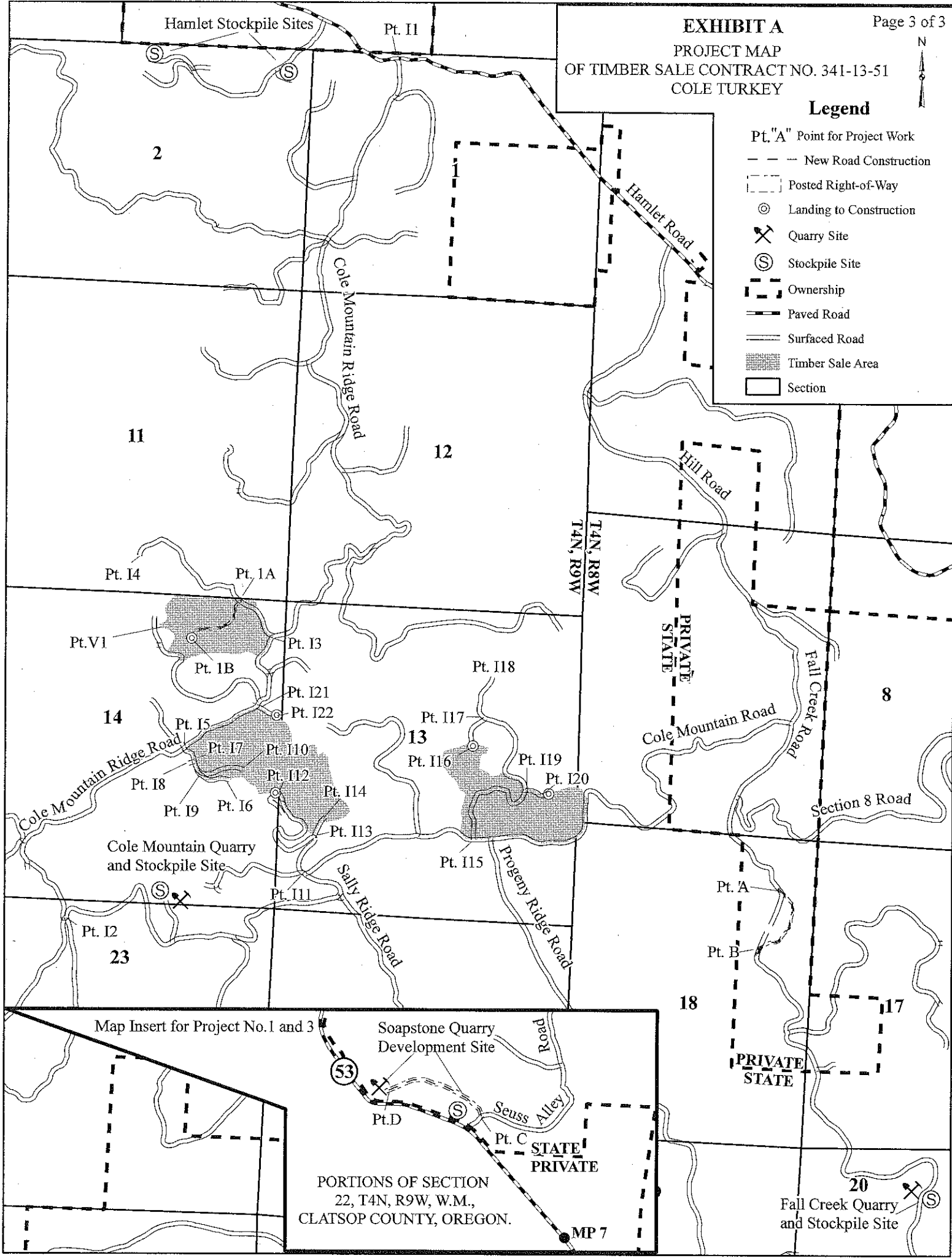
EXHIBIT A

PROJECT MAP OF TIMBER SALE CONTRACT NO. 341-13-51 COLE TURKEY

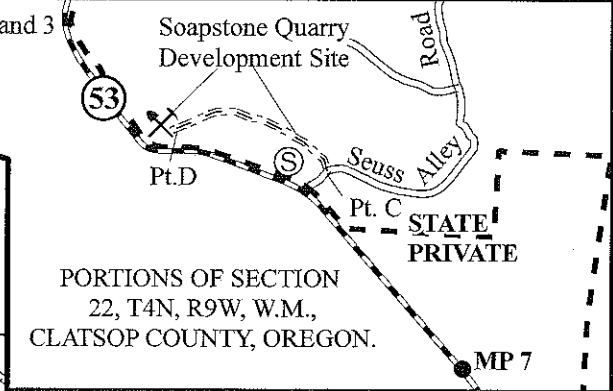


Legend

- Pt. "A" Point for Project Work
- - - New Road Construction
- - - Posted Right-of-Way
- ⊙ Landing to Construction
- ⌵ Quarry Site
- Ⓢ Stockpile Site
- - - Ownership
- == Paved Road
- Surfaced Road
- ▨ Timber Sale Area
- Section



Map Insert for Project No. 1 and 3



PORTIONS OF SECTION
22, T4N, R9W, W.M.,
CLATSOP COUNTY, OREGON.