

EXHIBIT "A" VICINITY MAP

OF TIMBER SALE CONTRACT NO. 341-13-26
WALKER FOREST RANGER
PORTIONS OF SECTIONS 9, 10, 15, AND
16, T5N, R6W, W.M.,
CLATSOP COUNTY, OREGON.

Approximate Scale = 1"=4,500'

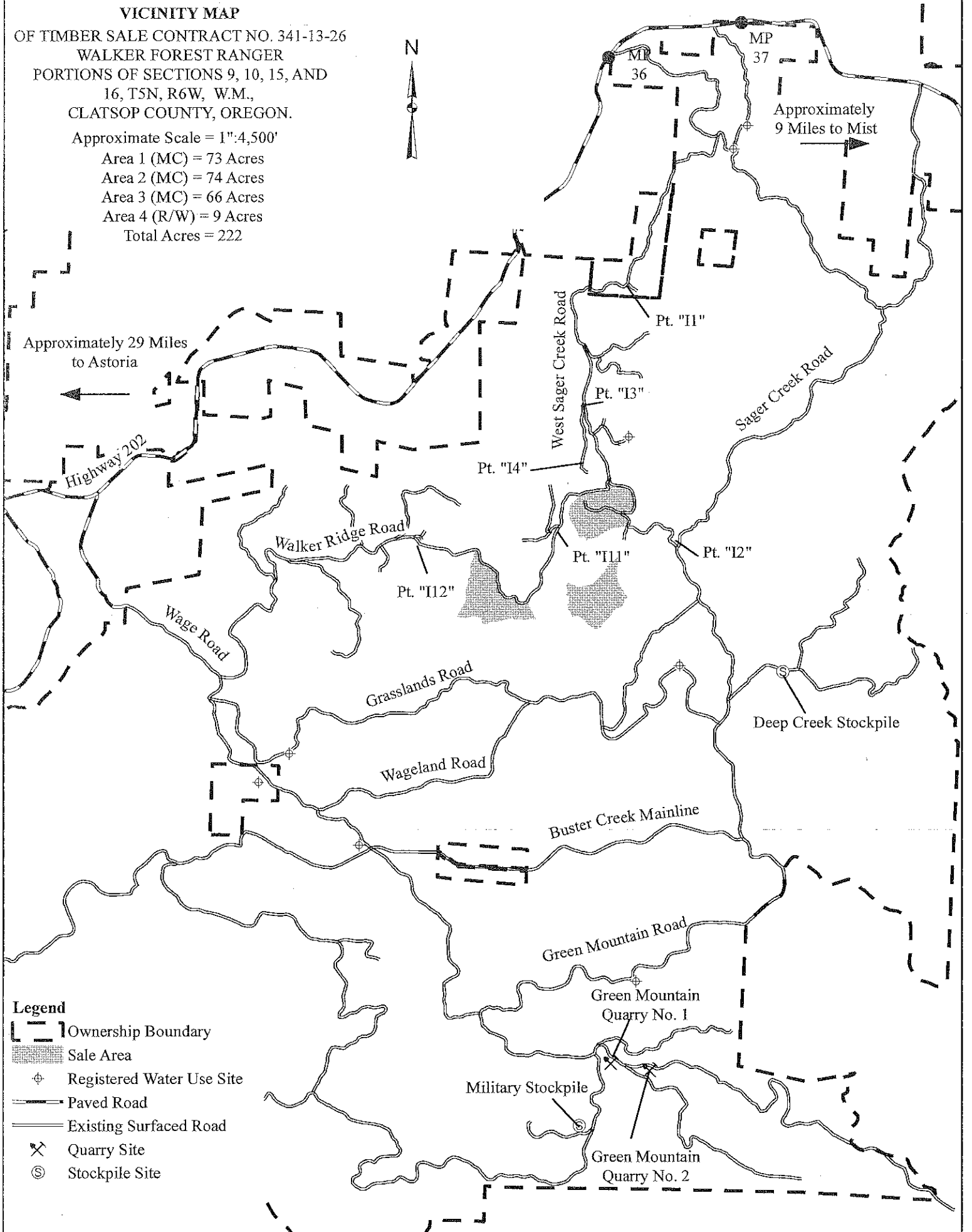
Area 1 (MC) = 73 Acres

Area 2 (MC) = 74 Acres

Area 3 (MC) = 66 Acres

Area 4 (R/W) = 9 Acres

Total Acres = 222



Approximately 29 Miles
to Astoria

Approximately
9 Miles to Mist

Highway 202

Wage Road

Walker Ridge Road

Grasslands Road

Wageland Road

Buster Creek Mainline

Green Mountain Road

Green Mountain
Quarry No. 1

Military Stockpile

Green Mountain
Quarry No. 2

Deep Creek Stockpile

West Sager Creek Road

Sager Creek Road

Pt. "I1"

Pt. "I3"

Pt. "I4"

Pt. "I12"

Pt. "I11"

Pt. "I2"

MR
36

MP
37

- Legend**
- Ownership Boundary
 - Sale Area
 - Registered Water Use Site
 - Paved Road
 - Existing Surfaced Road
 - Quarry Site
 - Stockpile Site

EXHIBIT "A"

OF TIMBER SALE CONTRACT NO. 341-13-26
 WALKER FOREST RANGER
 PORTIONS OF SECTIONS 9, 10, 15, AND
 16, T5N, R6W, W.M.,
 CLATSOP COUNTY, OREGON.

Area 1 (MC) = 73 Acres
 Area 2 (MC) = 74 Acres
 Area 3 (MC) = 66 Acres
 Area 4 (R/W) = 9 Acres
 Total Acres = 222

Approximate Scale = 1":1,000'
 0 500 1,000 1,500 Feet

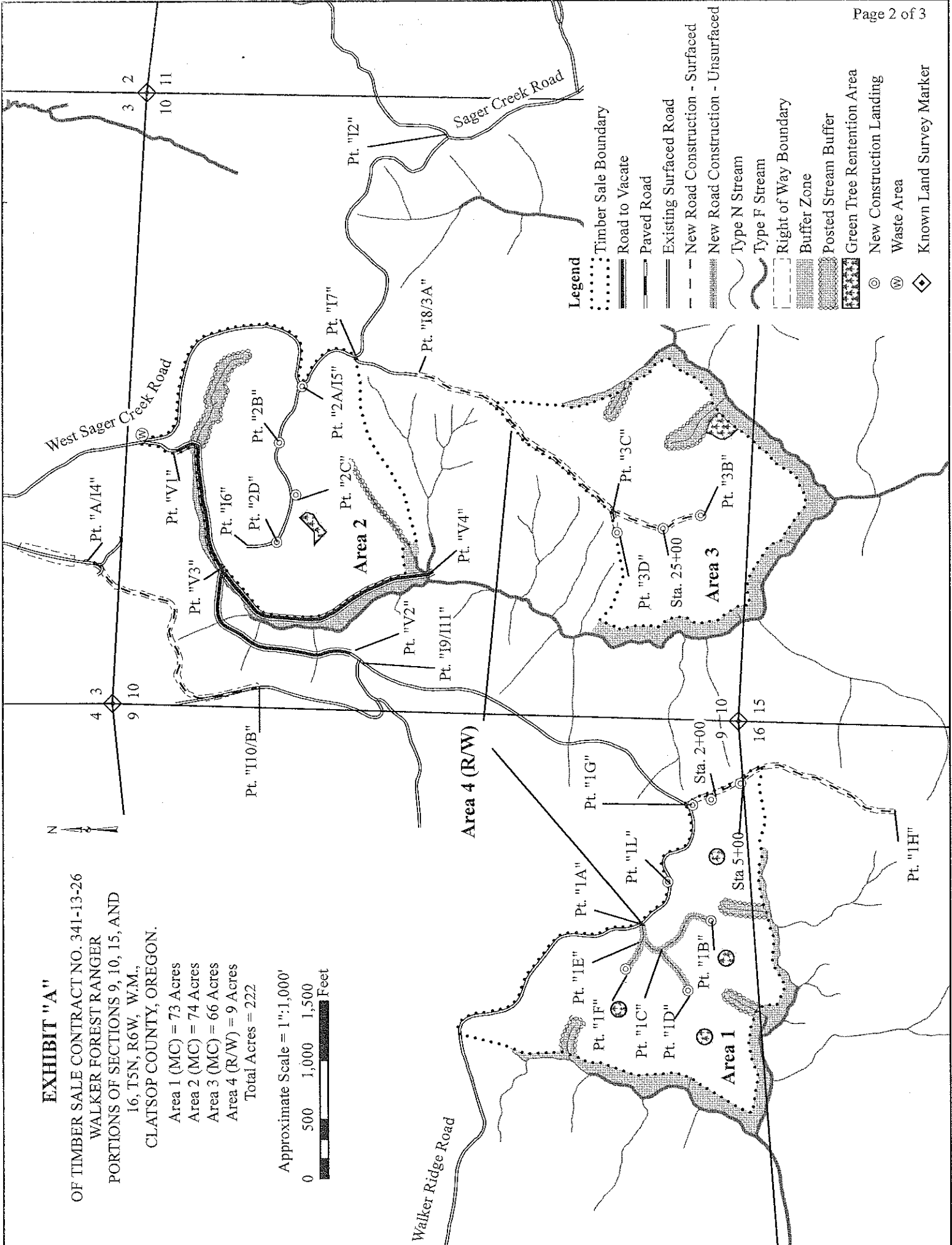
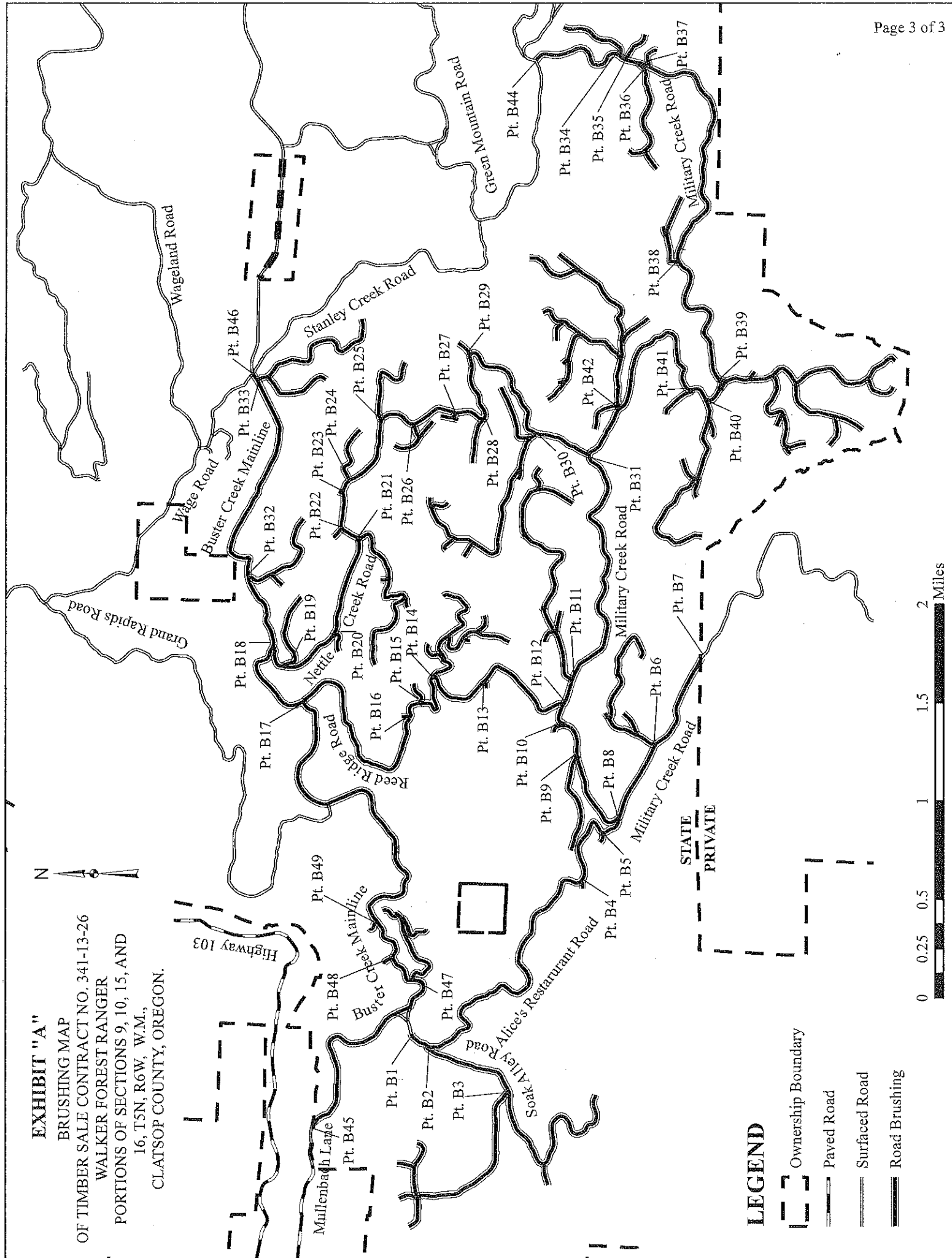


EXHIBIT "A"

BRUSHING MAP
 OF TIMBER SALE CONTRACT NO. 341-13-26
 WALKER FOREST RANGER
 PORTIONS OF SECTIONS 9, 10, 15, AND
 16, T5N, R6W, W.M.,
 CLATSOP COUNTY, OREGON.



LEGEND

- Ownership Boundary
- Paved Road
- Surfaced Road
- Road Brushing

